

U.S. PUBLIC LAND SURVEY MONUMENT RECORD

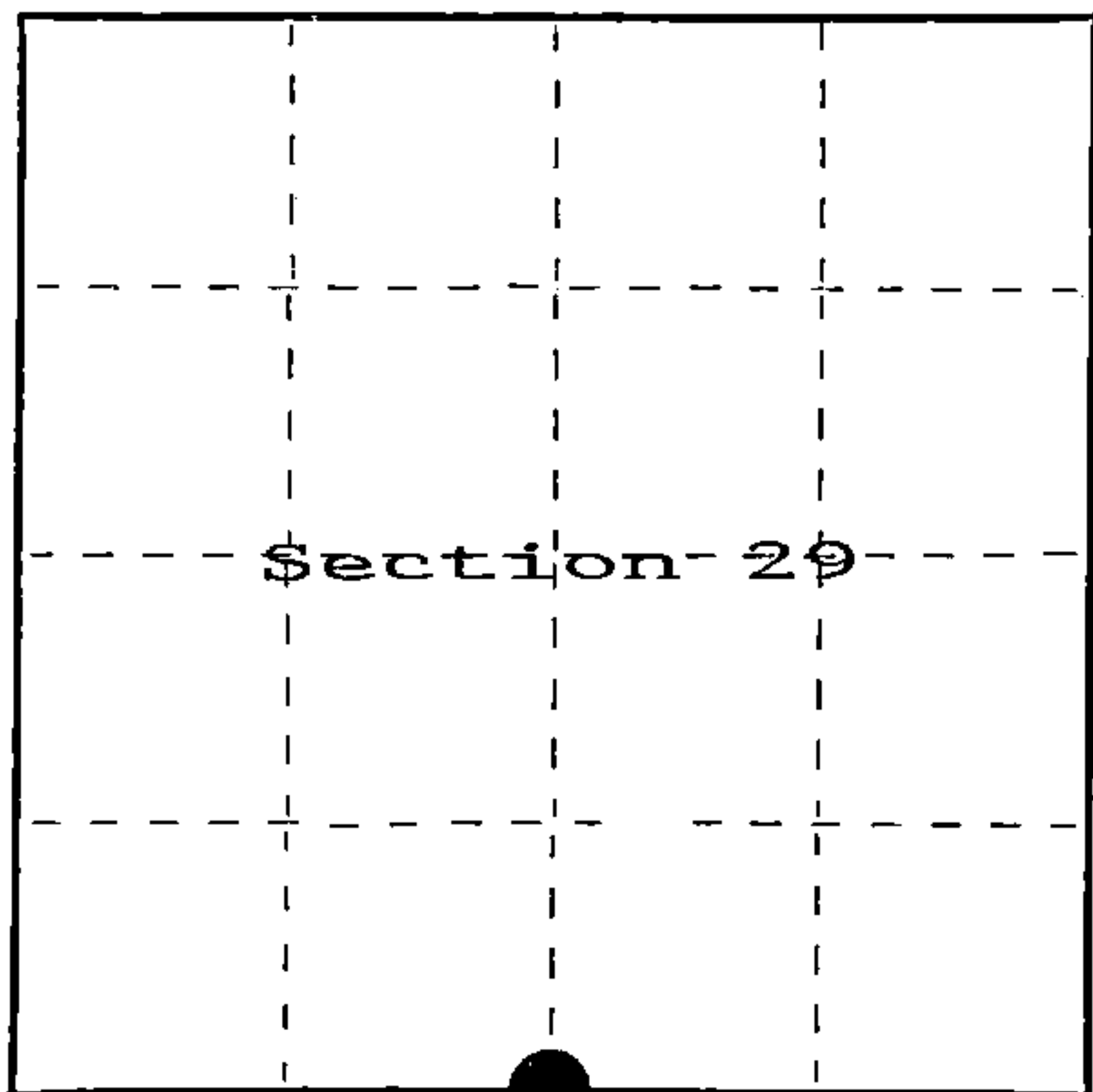
Index No. V-7

State of Wisconsin }
County of Forest } ss.

I, John C. Schulke, do hereby certify that on the Nineth day of November, 19 86, I found evidence of the South Quarter corner of Section 29 Township Thirty Seven, North, Range Twelve East, Fourth Principal Meridian, as described hereon; and that from this evidence I established a new monument and accessories as described hereon to perpetuate the original location of this corner.

Resident witnesses:

.....
.....
.....



○ = Corner monument restored.

History of original corner establishment:

Original corner established in 1859 by William Daugherty, U.S. Deputy Surveyor.

Set wooden post with the following bearing trees:

Spruce	6"	N52°E	15 links
Spruce	6"	S39°E	13 links

Description of corner evidence found:

No evidence found.

Description of monument and accessories I established to perpetuate the original location of this corner.

Set 2 1/2" X 3' aluminum magnetic capped monument stamped to identify the corner.

Set steel sign post South-Southwest 1.0 feet.

White Pine	10"	N44°W	47.23 feet
Sugar Maple	10"	N05°E	33.24 feet
Sugar Maple	7"	S35°W	53.55 feet
Sugar Maple	10"	S72°E	23.94 feet

Center of a two track is N57°W 104.2 feet from the monument.

Dated at Ludington, Michigan, this fifth day of January, 19 87.

Signature John C. Schulke Title Land Surveyor Registration No. S-1665

(County Surveyor, Registered Land Surveyor, or other duly authorized official)

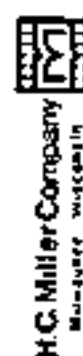
Office of Register of Deeds, County of Forest, I hereby certify that the within instrument was filed in this office for record on the 24th day of February, 19 87 at 2:00 o'clock P. M.

Paul Achenbrenner

(Register of Deeds)

By.....Deputy

FORM NO. 985-A



Stock No. 26273

DOCUMENT NUMBER
132165

REGISTRAR'S OFFICE
Forest County, Wis.
Received for record this 24th day
of February, A.D., 19 87 at
2:00 o'clock P. M. and recorded
in Vol. CORNER RESTORATIONS
page 57
Paul Achenbrenner
Register of Deeds

437122900200

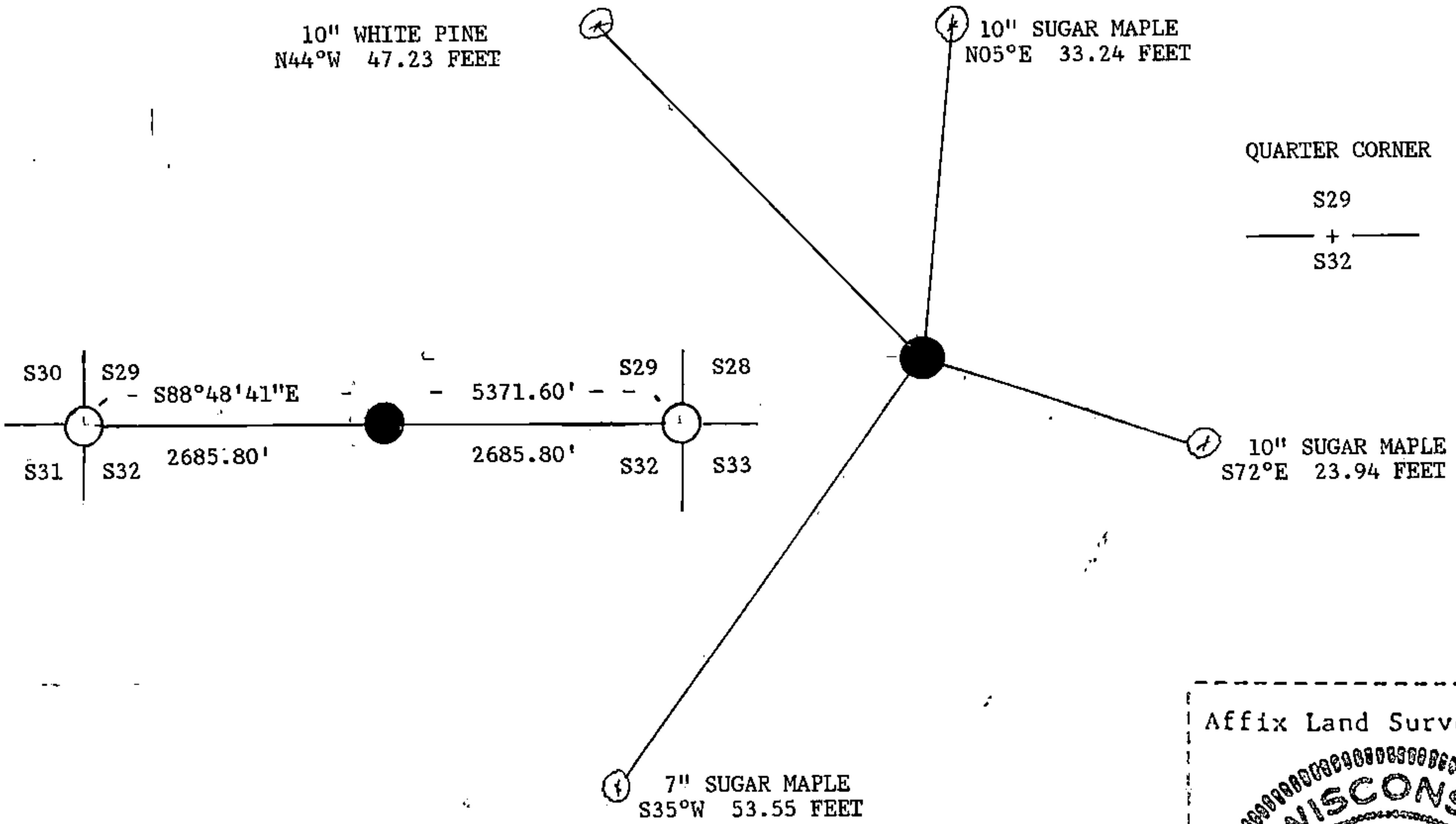
(e) Describe any material discrepancy between the location of the corner as restored or reestablished and the location of that corner as previously restored or reestablished by distance and direction. Show the discrepancy on the plan view drawing under (d), above. Show the distances between the corner as previously restored or reestablished and (1) the corner as restored or reestablished, and (2) to at least 2 of the witness monuments shown on the drawing in (d), above.

None, first corner restoration

(f) Was the corner restored through acceptance of (1) an obliterated evidence location, or, (2) a found perpetuated location?

Neither, restored through lost proportionate methods.

(g&h) Was the corner reestablished through lost corner proportionate methods? If so, show the method, including the directions and distances to other public land survey corners used as evidence or used for proportioning in determining the corner location?



(i) I, John C. Schulke
[type or print name] certify that the corner location shown on this record was determined by me or under my direction and control and that this U.S. Public Land Survey Monument Record is correct and complete to the best of my knowledge and belief.

John C. Schulke
Signature

January 5th, 1987
Date

Certificate Ready for Filing:

Dale B. Staeger
District Ranger

2/24/87
Date