

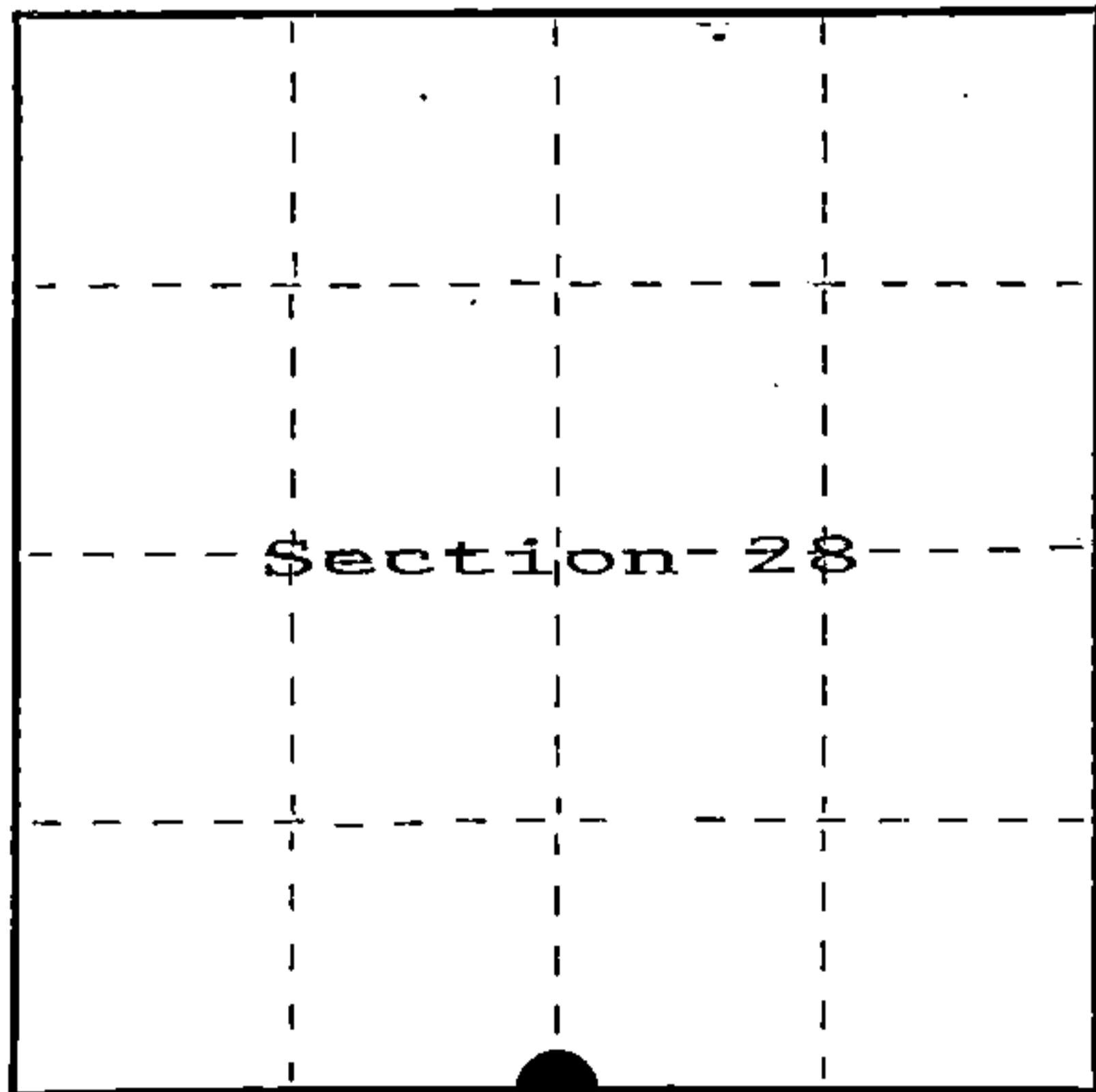
U.S. PUBLIC LAND SURVEY MONUMENT RECORD

Index No. V-11

State of Wisconsin }
County of Forest } ss.

I, John C. Schulke, do hereby certify that on the Sixteenth day of November, 19 86, I found evidence of the South Quarter corner of Section 28 Township Thirty Seven, North, Range Twelve East, Fourth Principal Meridian, as described hereon; and that from this evidence I established a new monument and accessories as described hereon to perpetuate the original location of this corner.

Resident witnesses:



○ = Corner monument restored.

History of original corner establishment:

Original corner established in 1859 by William Daugherty, U.S. Deputy Surveyor.

Set wooden post with the following bearing trees:

Birch	8"	N18°W	73 links
Birch	7"	S57°E	32 links

Description of corner evidence found:

No evidence of corner recovered.

Description of monument and accessories I established to perpetuate the original location of this corner.

Set 2 1/2" X 5' aluminum magnetic capped monument stamped to identify the corner.

Set steel sign post Southeast 1.1 feet. Blazed, scribed, painted and tagged the following bearing trees:

Black Ash	8"	S88°E	19.07 feet
Black Ash	11"	S32°E	13.40 feet
Cedar	13"	S49°W	32.80 feet
Black Ash	13"	N49°W	22.45 feet

Dated at Ludington, Michigan, Wis., this fifth day of January, 19 87

Signature John C. Schulke Title Land Surveyor Registration No. S-1665
(County Surveyor, Registered Land Surveyor, or other duly authorized official)

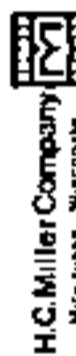
Office of Register of Deeds, County of Forest, I hereby certify that the within instrument was filed in this office for record on the 24th day of February, 19 87 at 2:00 o'clock P. M.

Paul Achenbrenner
(Register of Deeds)

By.....Deputy

REGISTER'S OFFICE
Forest County, Wis.
Received for record this 24th day
of February A.D., 19 87 at
2:00 o'clock P. M. and recorded
in Vol. CORNER RESTORATIONS
page 1-11
Paul Achenbrenner
Register of Deeds

FORM NO. 985-A



Stock No. 26273

DOCUMENT NUMBER
132167

4371228 0020

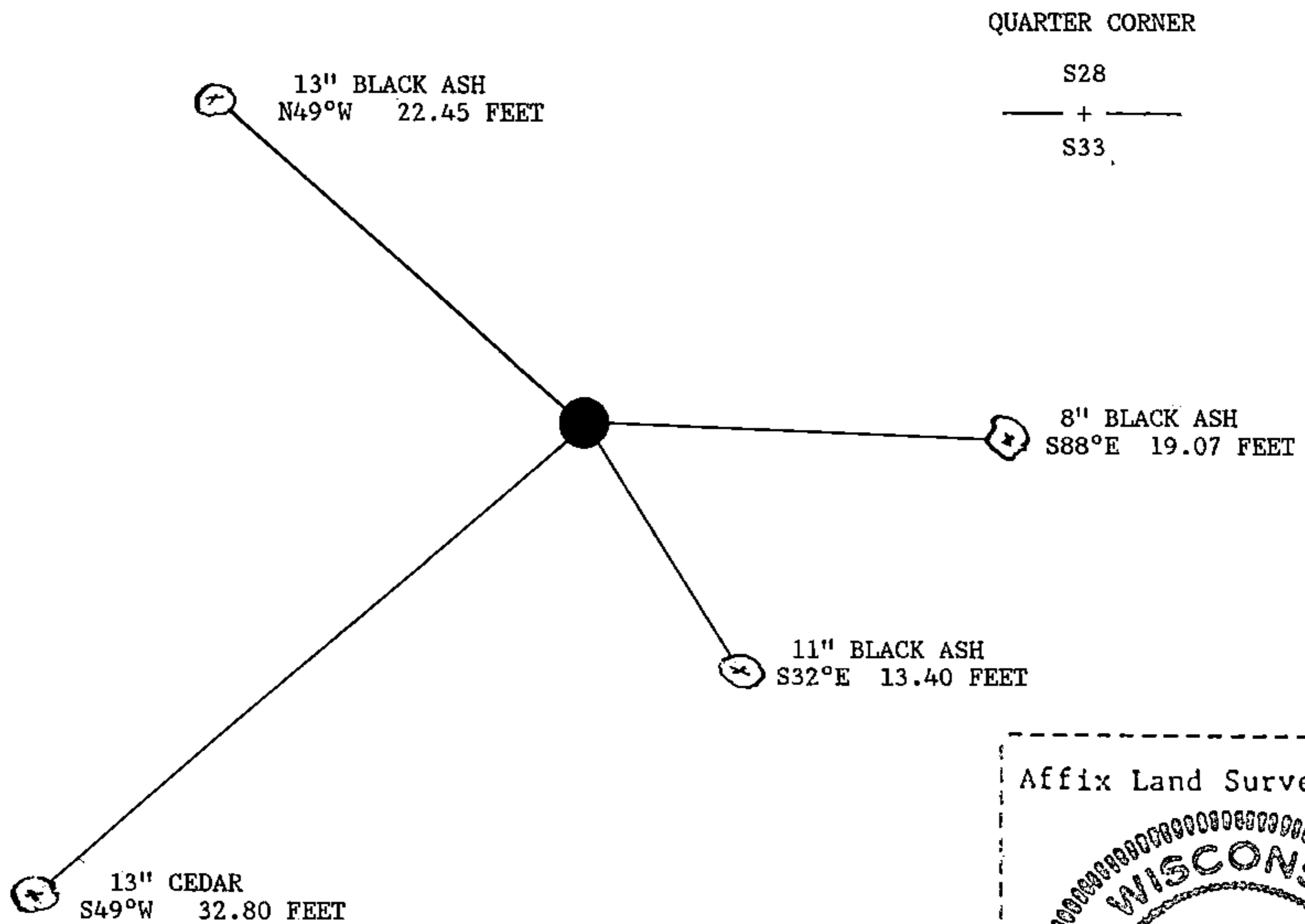
(e) Describe any material discrepancy between the location of the corner as restored or reestablished and the location of that corner as previously restored or reestablished by distance and direction. Show the discrepancy on the plan view drawing under (d), above. Show the distances between the corner as previously restored or reestablished and (1) the corner as restored or reestablished, and (2) to at least 2 of the witness monuments shown on the drawing in (d), above.

No discrepancy, first restoration.

(f) Was the corner restored through acceptance of (1) an obliterated evidence location, or, (2) a found perpetuated location?

Restored through lost corner proportionate methods.

(g&h) Was the corner reestablished through lost corner proportionate methods? If so, show the method, including the directions and distances to other public land survey corners used as evidence or used for proportioning in determining the corner location?



QUARTER CORNER

S28

— + —
S33

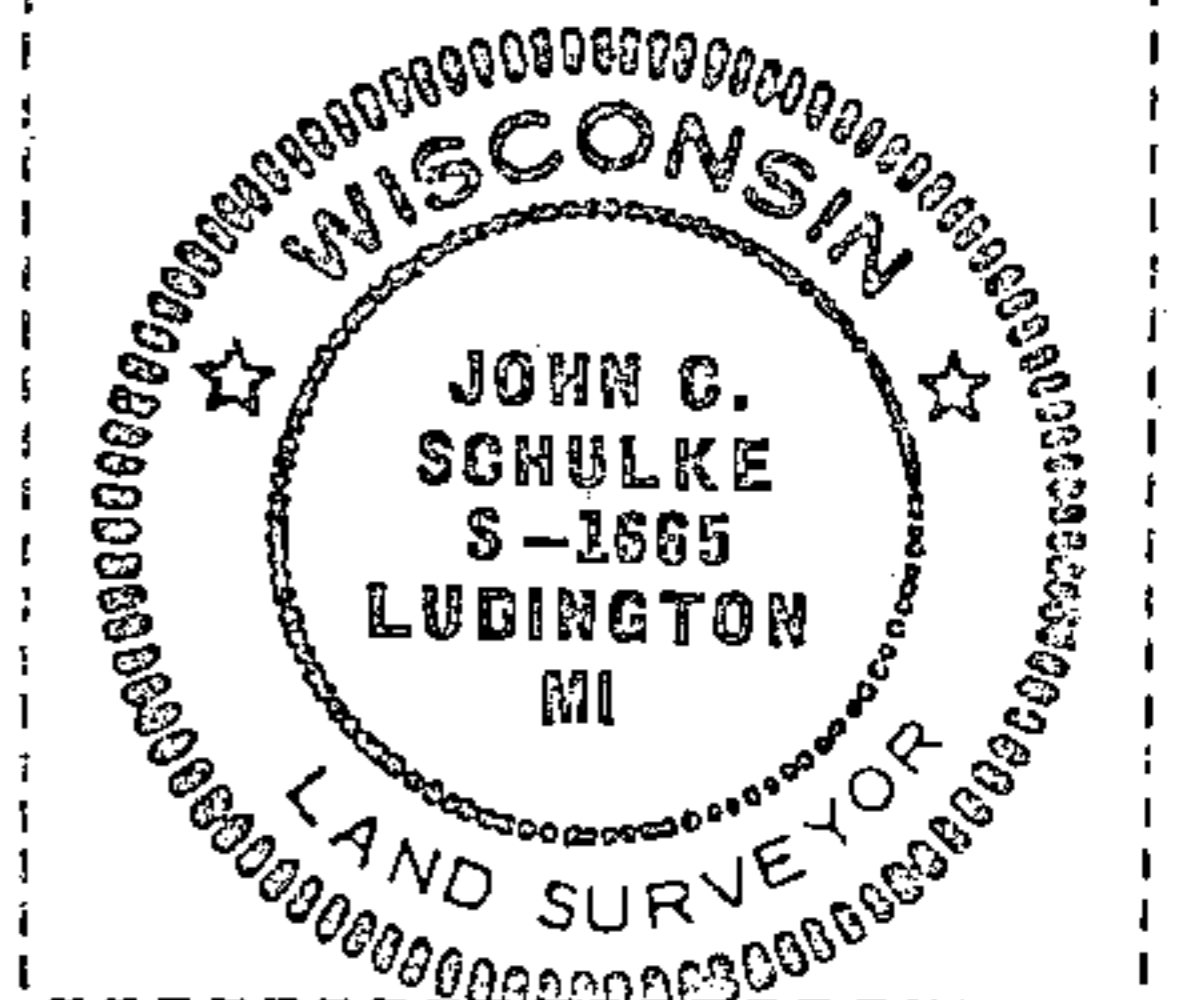
13" BLACK ASH
N49°W 22.45 FEET

8" BLACK ASH
S88°E 19.07 FEET

11" BLACK ASH
S32°E 13.40 FEET

13" CEDAR
S49°W 32.80 FEET

Affix Land Surveyor Seal



(i) I, John C. Schulke
(type or print name) certify that the corner location shown on this record was determined by me or under my direction and control and that this U.S. Public Land Survey Monument Record is correct and complete to the best of my knowledge and belief.

Signature _____ Date January 5th, 1987

Certificate Ready for Filing: Dale B. Stage 2/24/87
District Ranger Date

4 ✓