

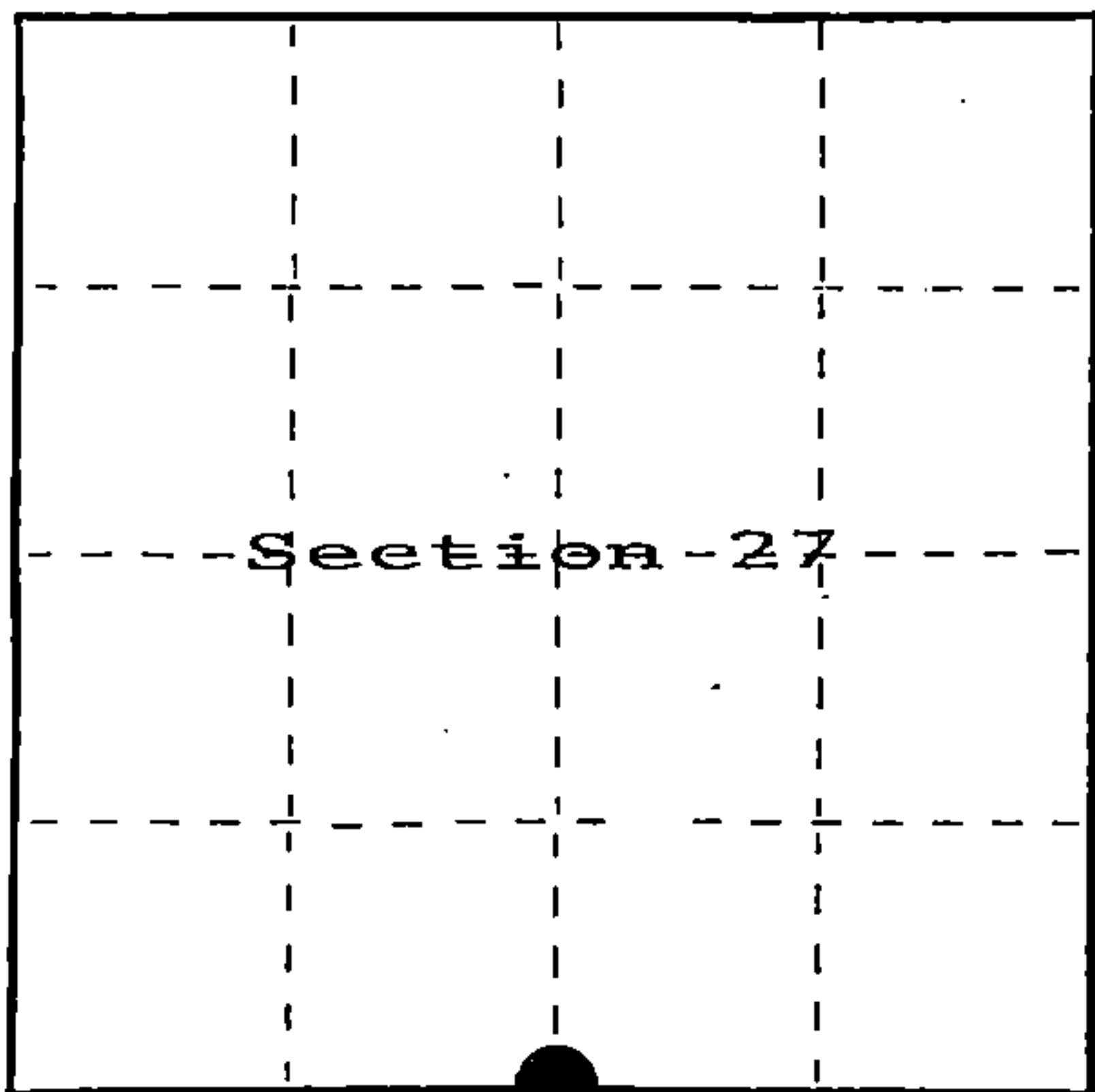
U.S. PUBLIC LAND SURVEY MONUMENT RECORD

Index No. V-15

State of Wisconsin }
County of Forest } ss.

I, John C. Schulke, do hereby certify that on the thirtieth day of July, 1986, I found evidence of the South Quarter corner of Section 27 Township Thirty Seven, North, Range Twelve East, Fourth Principal Meridian, as described hereon; and that from this evidence I established a new monument and accessories as described hereon to perpetuate the original location of this corner.

Resident witnesses:



○ = Corner monument restored.

History of original corner establishment:

Original corner established in 1959 by William Daugherty, U.S. Deputy Surveyor.

Set wooden post with the following bearing trees:

Tamarack	8"	N43°W	10 links
Tamarack	8"	S21°E	11 links

Description of corner evidence found:

No evidence of the GLO, or any subsequent survey recovered.

Description of monument and accessories I established to perpetuate the original location of this corner.

Set a 2 1/2" diameter aluminum pipe monument, 5 feet long, 4 feet in the ground, with an aluminum cap stamped; T37N, R12E, 1/4, S26, S27, 1986, S-1665. Established the following new bearing trees which are blazed, scribed, painted, and tagged.

Tamarack	9"	S08°W	42.48 feet
Tamarack	11"	S75°W	23.07 feet
Tamarack	11"	N38°W	24.72 feet
Tamarack	13"	N06°W	94.48 feet

Steel sign post set Southeast 1.4 feet

Note: All bearing trees are dead, as a result of flooding by beaver back waters.

Dated at Ludington, Michigan, Wis., this 13th day of January, 1987

Signature John C. Schulke Title Land Surveyor Registration No. S-1665
(County Surveyor, Registered Land Surveyor, or other duly authorized official)

Office of Register of Deeds, County of Forest, I hereby certify that the within instrument was filed in this office for record on the 11th day of March, 1987 at 3:30 o'clock P. M.

Paul Aschenbrenner
(Register of Deeds)

By _____ Deputy

FORM NO. 985-A

H.C. Miller Company

Stock No. 26273

DOCUMENT NUMBER 132284

43712 270020

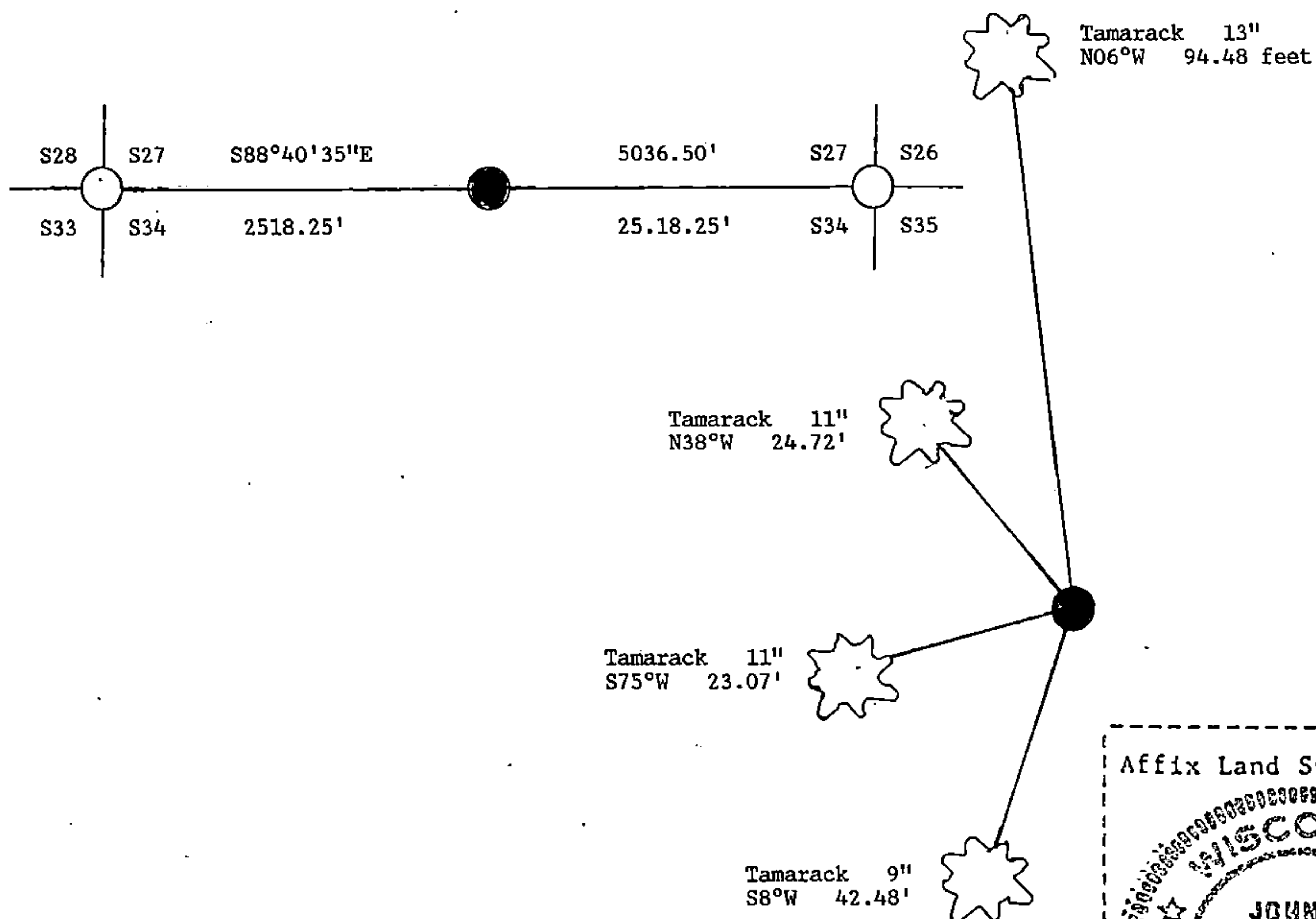
(e) Describe any material discrepancy between the location of the corner as restored or reestablished and the location of that corner as previously restored or reestablished by distance and direction. Show the discrepancy on the plan view drawing under (d), above. Show the distances between the corner as previously restored or reestablished and (1) the corner as restored or reestablished, and (2) to at least 2 of the witness monuments shown on the drawing in (d), above.

No discrepancy, first corner restoration.

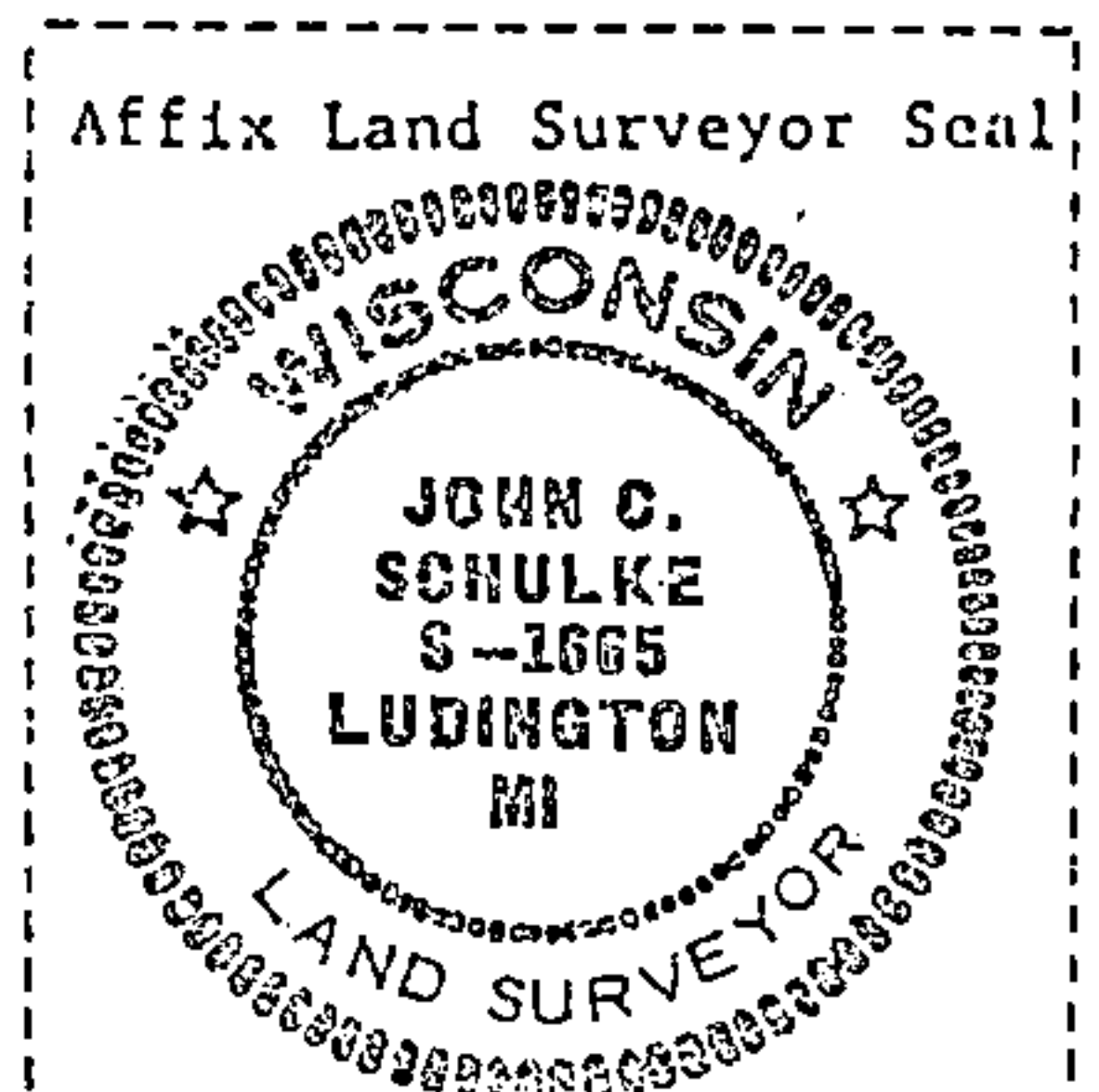
(f) Was the corner restored through acceptance of (1) an obliterated evidence location, or, (2) a found perpetuated location?

(g&h) Was the corner reestablished through lost corner proportionate methods? If so, show the method, including the directions and distances to other public land survey corners used as evidence or used for proportioning in determining the corner location?

The corner was reestablished through lost corner proportionate methods.



(i) I, John C. Schulke
(Type or print name) certify that the corner location shown on this record was determined by me or under my direction and control and that this U.S. Public Land Survey Monument Record is correct and complete to the best of my knowledge and belief.



John C. Schulke January 13th, 1987
Signature Date

Survey requested by; Dale S. Staeger 3/4/87
District Ranger Date