

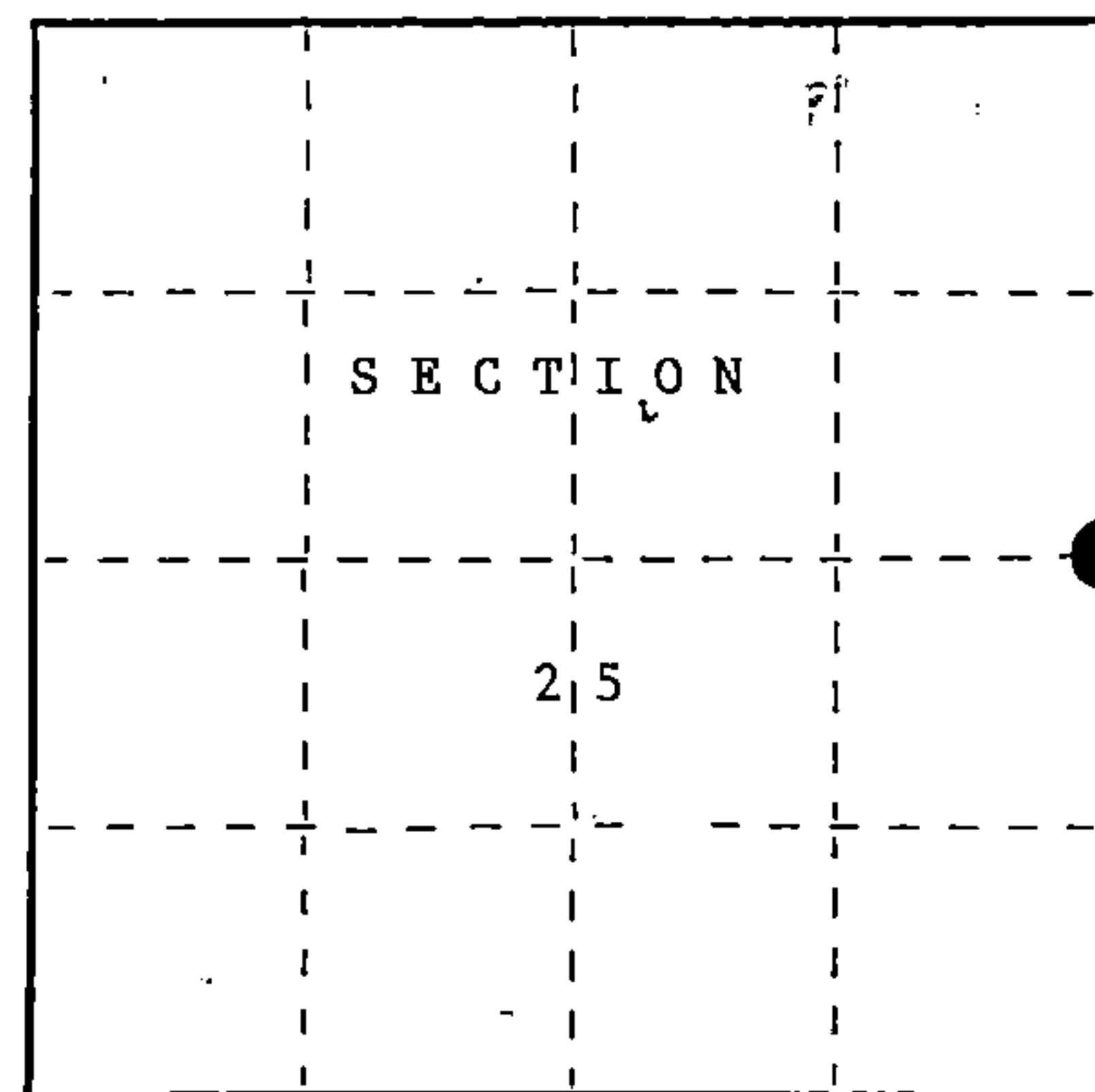
U.S. PUBLIC LAND SURVEY MONUMENT RECORD

Index No. T-25

State of Wisconsin }
County of FOREST } ss.

I, John C. Schulke, do hereby certify that on the 17th day of April, 1987, I found evidence of the East Quarter corner of Section 25 Township thirty-seven, North, Range twelve East, Fourth Principal Meridian, as described hereon; and that from this evidence I established a new monument and accessories as described hereon to perpetuate the original location of this corner.

Resident witnesses:



○ = Corner monument restored.

History of original corner establishment:

Original corner established in 1858 by Alfred Millard, U.S. Deputy Surveyor.

Set a wooden post with the following bearing trees:

Spruce	10"	N75°E	14 lks.
Hemlock	10"	S70°W	34 lks.

Description of corner evidence found:

Found an old boundary line fences running North, South and East.

Description of monument and accessories I established to perpetuate the original location of this corner.

Set 2 1/2" diameter aluminum pipe monument, 3 feet long, 30 inches in the ground with an aluminum cap stamped; T37N, R12E, 1/4, S25, S30, 1987, S-1665.

Set a steel sign post Northeast a distance of 1.1 feet. Established the following bearing trees which are blazed, scribed, painted and tagged.

Triple Red Maple	16"	N27°E	20.78 feet
Red Maple	7"	East	6.89 feet
Balsam	6"	S21°W	43.84 feet
White Birch	6"	S65°W	32.15 feet

Dated at Hiles, Wis., this Ninth day of November, 1987

Signature John C. Schulke Title Land Surveyor Registration No. S-1665
(County Surveyor, Registered Land Surveyor, or other duly authorized official)

Office of Register of Deeds, County of Forest, I hereby certify that the within instrument was filed in this office for record on the 2nd day of February, 1988 at 9:40 o'clock A. M.

Paul Aschenbrenner
(Register of Deeds)

By Deputy

FORM NO. 985-A

H.C. Miller Company

Stock No. 26273

DOCUMENT NUMBER 134576

37-12
43712 252000

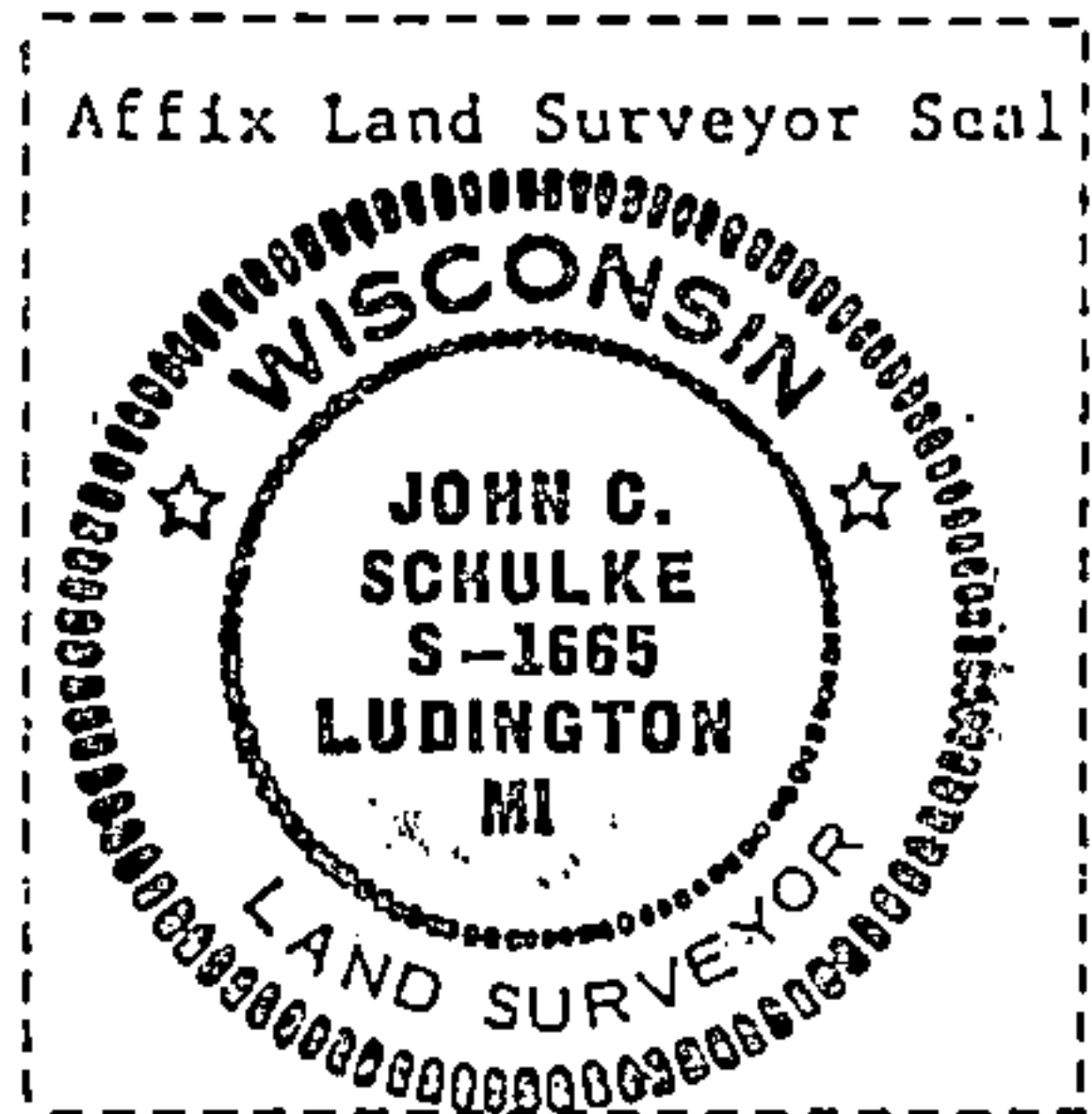
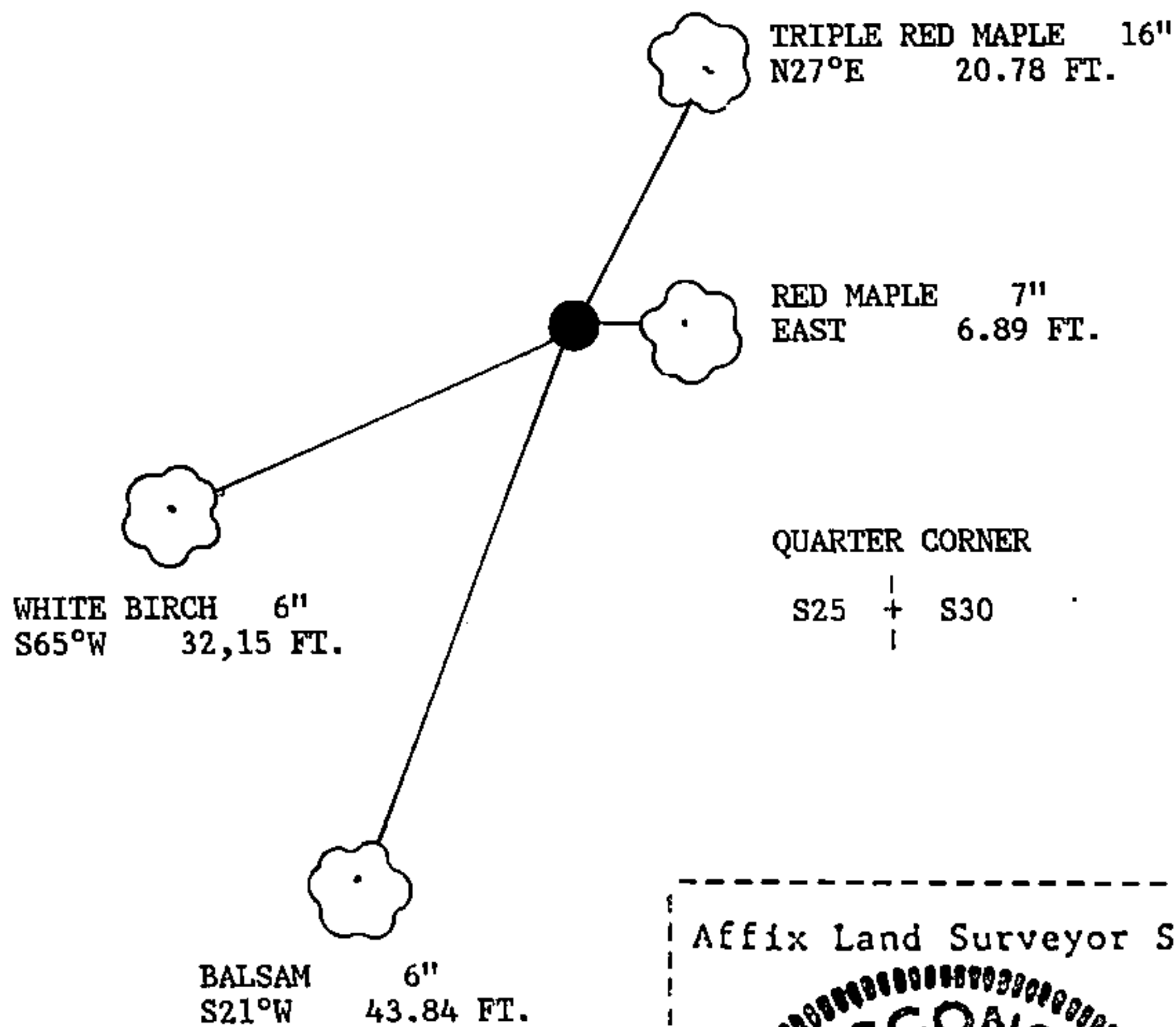
(e) Describe any material discrepancy between the location of the corner as restored or reestablished and the location of that corner as previously restored or reestablished by distance and direction. Show the discrepancy on the plan view drawing under (d), above. Show the distances between the corner as previously restored or reestablished and (1) the corner as restored or reestablished, and (2) to at least 2 of the witness monuments shown on the drawing in (d), above.

No discrepancy, first corner restoration.

(f) Was the corner restored through acceptance of (1) an obliterated evidence location, or, (2) a found perpetuated location?

The corner restored through acceptance of an obliterated evidence location.
Fence corner appeared to be the most likely location of the original corner.

(g&h) Was the corner reestablished through lost corner proportionate methods? If so, show the method, including the directions and distances to other public land survey corners used as evidence or used for proportioning in determining the corner location?



(i) 1. John C. Schulke
(type or print name) certify that the corner location shown on this record was determined by me or under my direction and control and that this U.S. Public Land Survey Monument Record is correct and complete to the best of my knowledge and belief.

John C. Schulke 11-9-87
Signature Date

Survey requested by: Dale S. Stacey 2/1/88
District Ranger Date