

U.S. PUBLIC LAND SURVEY MONUMENT RECORD

Index No. R-16 & 17

State of Wisconsin }  
County of FOREST } ss.

I, John C. Schulke, do hereby certify that on the 3rd day of Sept., 1986, I found evidence of the Meander corner of Sections 22 and 27 Township 37 North, Range 12 East, Fourth Principal Meridian, as described hereon; and that from this evidence I established a new monument and accessories as described hereon to perpetuate the original location of this corner.

Resident witnesses:

Dave Stover

History of original corner establishment:

Original Government Survey in 1859 by William Daugherty.

Cedar 12" N67°E 12 links  
Birch 12" S41°E 16 links

Description of corner evidence found:

Found 1" iron pipe.

Description of monument and accessories I established to perpetuate the original location of this corner. Replaced iron pipe with a 2 1/2" aluminum pipe monument, 3 ft. long, 2 feet in the ground, with an aluminum cap stamped; MEANDER CORNER, T37N, R12E, S22, S27, 1986, S-1665. Established the following new bearing trees which are blazed, scribed and painted.

White Pine 24" S37°W 25.45 feet  
White Pine 9" S21°E 65.63 feet  
Red Pine 15" S73°E 84.71 feet  
Red Maple 20" S87°E 74.56 feet  
Steel sign post Southwest 0.4 feet  
Waters edge N50°W 10.0 feet

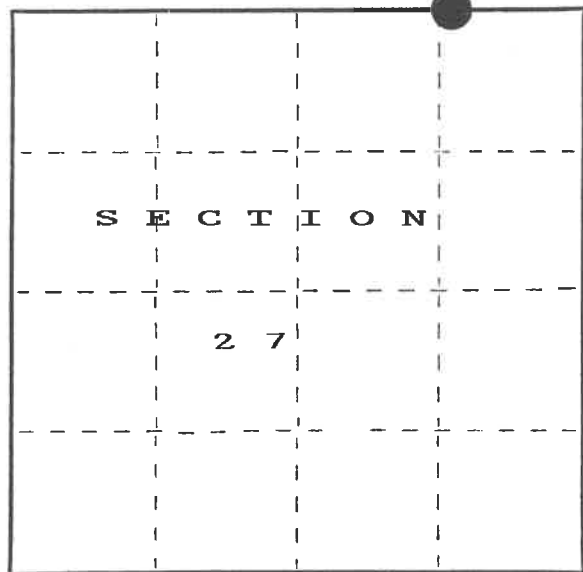
Dated at Ludington, Michigan, Wis., this fifth day of January, 1987

Signature John C. Schulke Title Land Surveyor Registration No S-1665  
(County Surveyor, Registered Land Surveyor, or other duly authorized official)

Office of Register of Deeds, County of Forest, I hereby certify that the within instrument was filed in this office for record on the 24th day of February, 1987 at 2:00 o'clock P.M.

Paul Aschenbrenner  
(Register of Deeds)

By Deputy



○ = Corner monument restored.

REGISTER'S OFFICE  
Forest County, Wis.

Received for record this 24th day of February A.D., 1987 at 2:00 o'clock P.M. and recorded in Vol. CORNER RESTORATIONS R-16 & 17

Paul Aschenbrenner  
Register of Deeds

FORM NO. 985-A

H.C. Miller Company

Stock No. 26273

DOCUMENT NUMBER  
132189

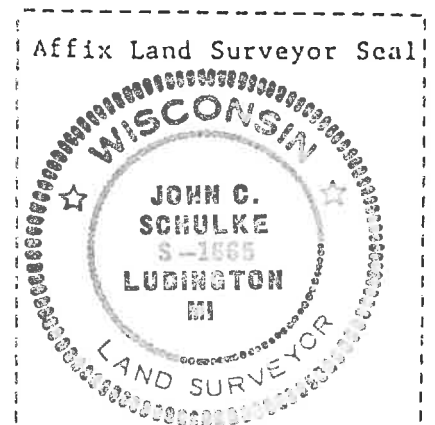
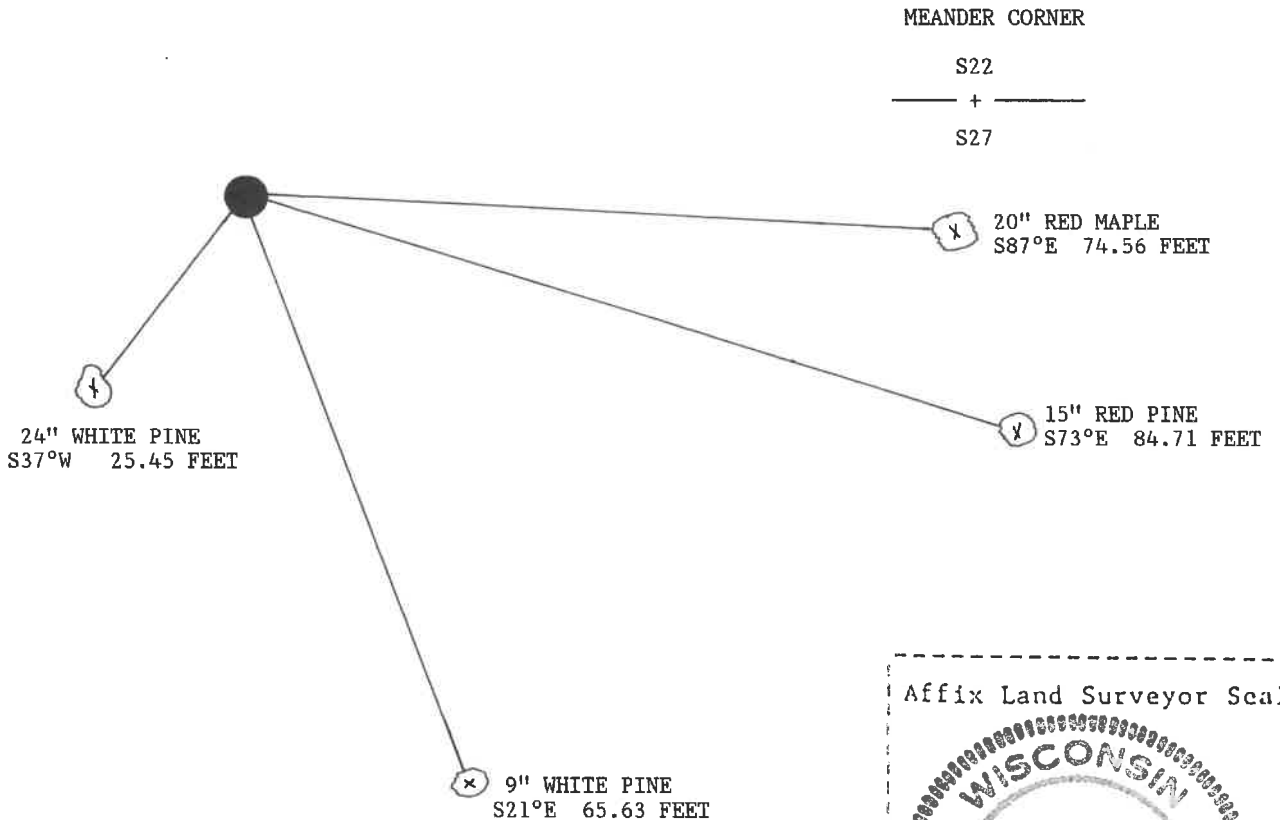
43712 220009

(e) Describe any material discrepancy between the location of the corner as restored or reestablished and the location of that corner as previously restored or reestablished by distance and direction. Show the discrepancy on the plan view drawing under (d), above. Show the distances between the corner as previously restored or reestablished and (1) the corner as restored or reestablished, and (2) to at least 2 of the witness monuments shown on the drawing in (d), above.

None

(f) Was the corner restored through acceptance of (1) an obliterated evidence location, or, (2) a found perpetuated location?  
 (2) found perpetuated location.

(g&h) Was the corner reestablished through lost corner proportionate methods? If so, show the method, including the directions and distances to other public land survey corners used as evidence or used for proportioning in determining the corner location?



(i) I, John C. Schulke  
 (type or print name) certify that the corner location shown on this record was determined by me or under my direction and control and that this U.S. Public Land Survey Monument Record is correct and complete to the best of my knowledge and belief.

John C. Schulke January 5th, 1987  
 Signature Date

Certificate Ready for Filing: Dale B Staeger 2/24/87  
 District Ranger Date