

U.S. PUBLIC LAND SURVEY MONUMENT RECORD

Index No. R-11

State of Wisconsin }
County of Forest } ss.

History of original corner establishment:

Original corner established in 1859 by William Daugherty, U.S. Deputy Surveyor.

Set wooden post with the following bearing trees:

| | | | |
|---------|-----|-------|---------|
| Hemlock | 8" | N08°W | 3 links |
| Hemlock | 12" | S61°E | 5 links |

Description of corner evidence found:

Recovered 3/4 inches dia. iron pipe at the corner.

Description of monument and accessories I established to perpetuate the original location of this corner.

Replaced 3/4 inches dia. Iron pipe with 2 1/2" dia. X 3' aluminum magnetic capped monument stamped to identify the corner. The iron pipe is along side the monument. Steel sign post set 0.7 feet Southwest. Blazed, scribed and painted the following bearing trees:

| | | | |
|-----------------------------|-----|-------|------------|
| Red Maple | 16" | N72°W | 60.27 feet |
| Sugar Maple | 7" | S28°W | 35.18 feet |
| Red Maple | 10" | S40°E | 2.0 feet |
| Southwest corner of a house | | N18°E | 34.85 feet |

Dated at Ludington, Michigan, Wis., this fifth day of January, 1987.

Signature John C. Schulke Title Land Surveyor Registration No. S-1665
(County Surveyor, Registered Land Surveyor, or other duly authorized official)

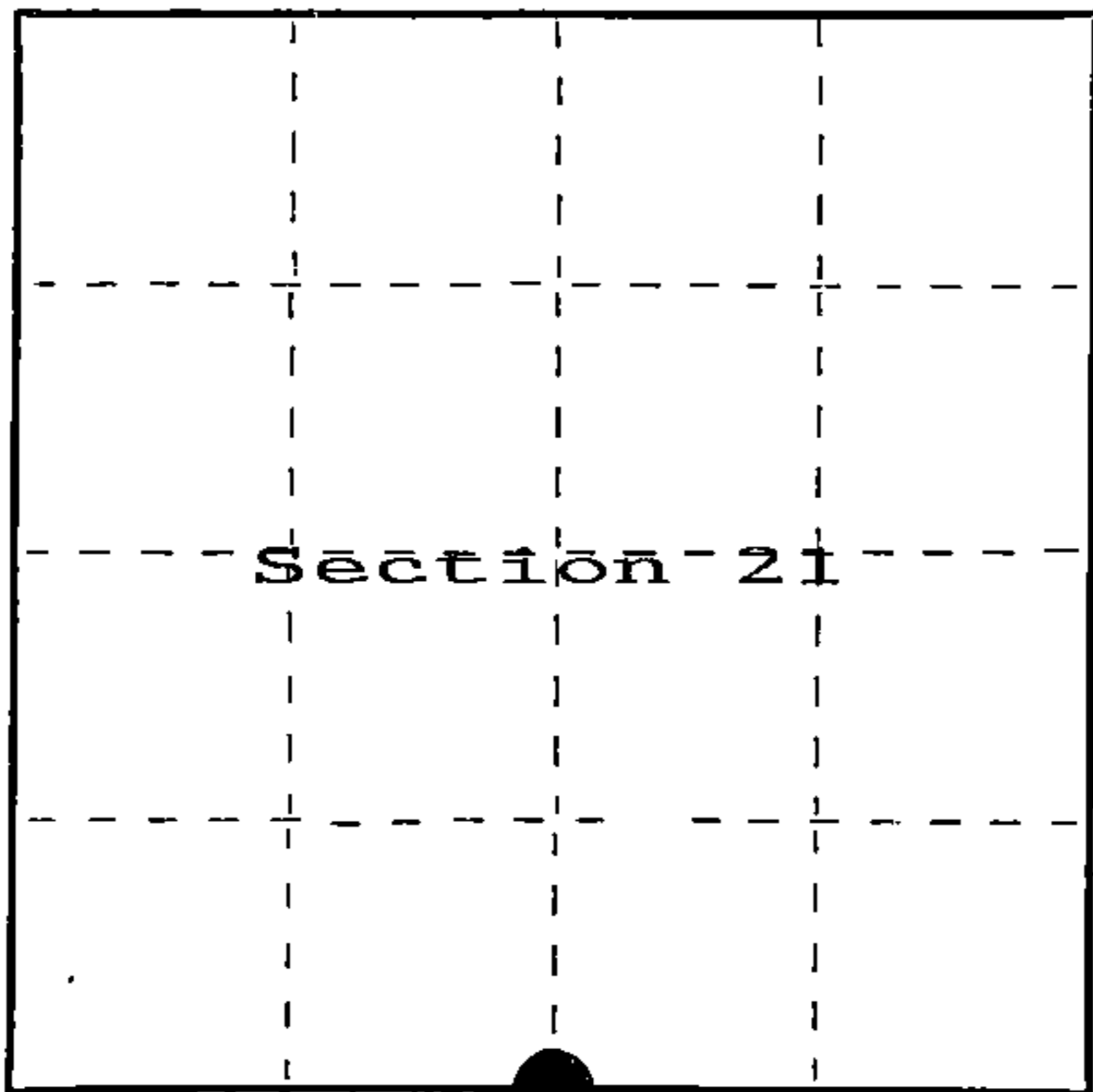
Office of Register of Deeds, County of Forest, I hereby certify that the within instrument was filed in this office for record on the 24th day of February, 1987 at 2:00 o'clock P. M.

Paul Aschenbrenner
(Register of Deeds)

By.....Deputy

I, John C. Schulke, do hereby certify that on the Third day of October, 1986, I found evidence of the South Quarter corner of Section 21 Township Thirty Seven, North, Range Twelve East, Fourth Principal Meridian, as described hereon; and that from this evidence I established a new monument and accessories as described hereon to perpetuate the original location of this corner.

Resident witnesses:



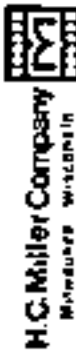
○ = Corner monument restored.

REGISTER'S OFFICE
Forest County, Wis.

Received for record this 24th day of February, D.D. 1987 at 2:00 o'clock P. M. and recorded in Vol. CORNER RESTORATIONS page 11

Paul Aschenbrenner
Register of Deeds

FORM NO. 985-A



Stock No. 26273

DOCUMENT NUMBER
132187

43712210020

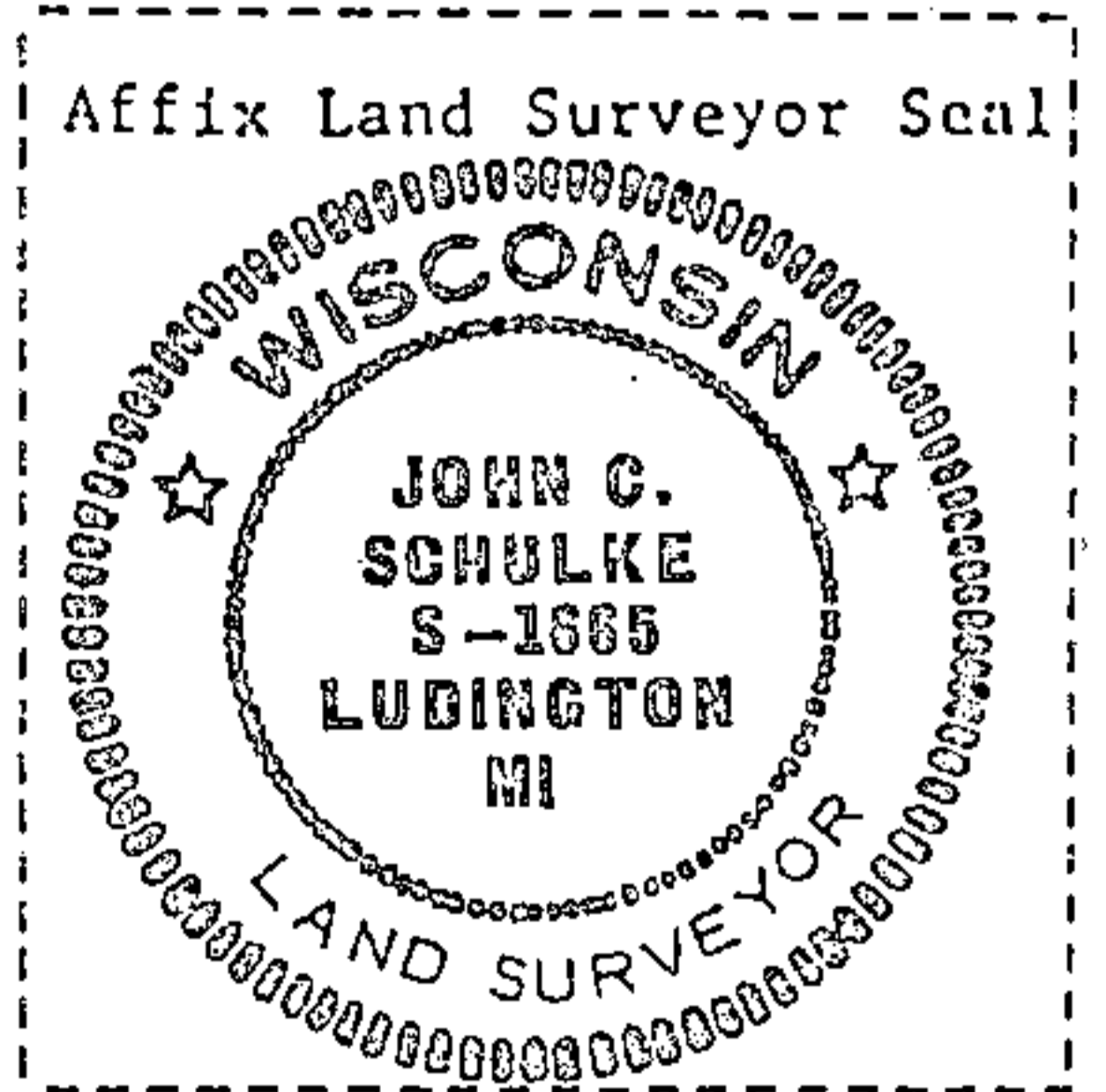
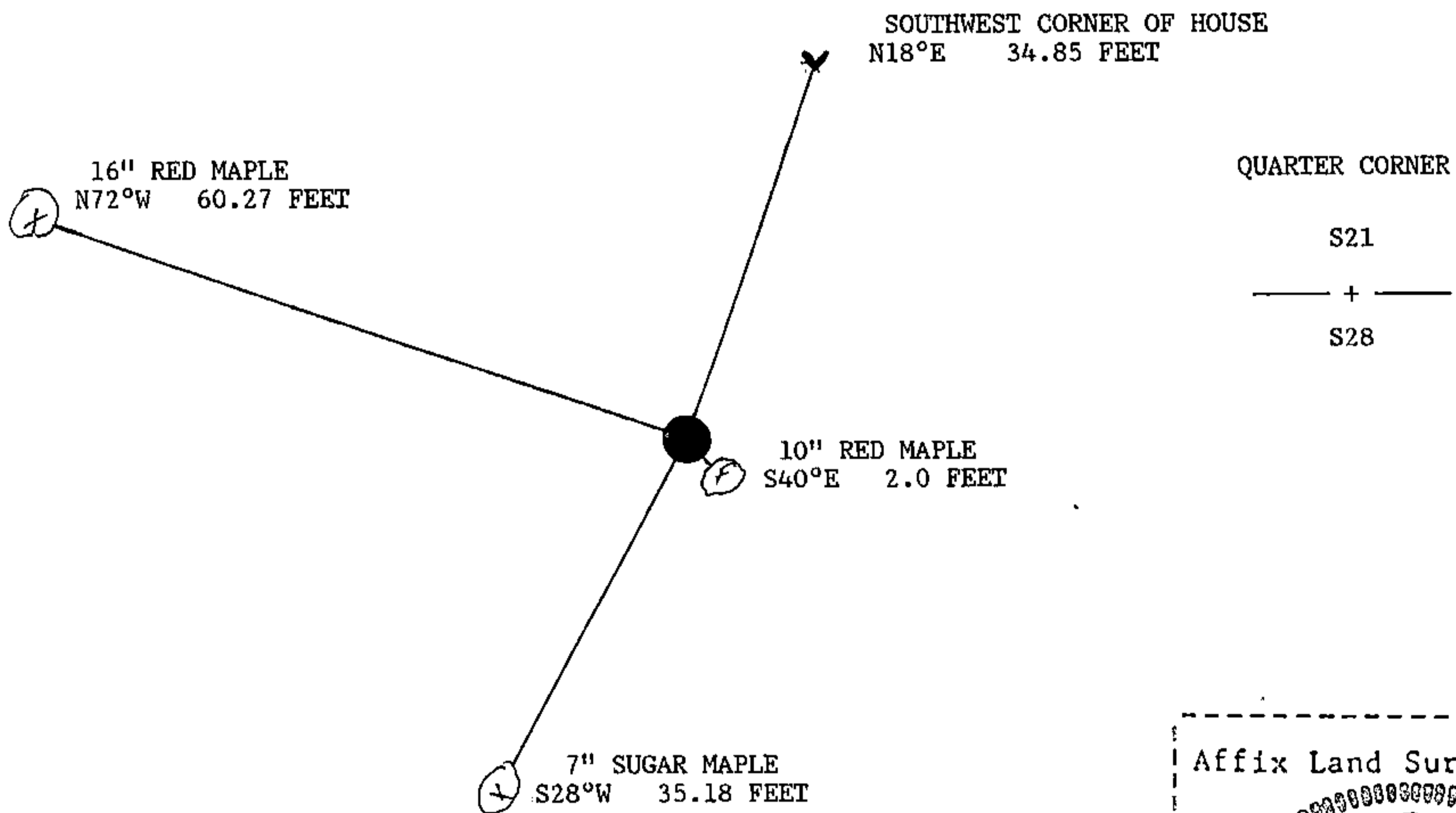
(e) Describe any material discrepancy between the location of the corner as restored or reestablished and the location of that corner as previously restored or reestablished by distance and direction. Show the discrepancy on the plan view drawing under (d), above. Show the distances between the corner as previously restored or reestablished and (1) the corner as restored or reestablished, and (2) to at least 2 of the witness monuments shown on the drawing in (d), above.

No discrepancy, accepted existing corner evidence.

(f) Was the corner restored through acceptance of (1) an obliterated evidence location, or, (2) a found perpetuated location?

The corner was through what is thought to be a found perpetuated location.

(g&h) Was the corner reestablished through lost corner proportionate methods? If so, show the method, including the directions and distances to other public land survey corners used as evidence or used for proportioning in determining the corner location?



(i) I, John C. Schulke
 (type or print name) certify that the corner location shown on this record was determined by me or under my direction and control and that this U.S. Public Land Survey Monument Record is correct and complete to the best of my knowledge and belief.

John C. Schulke January 5th, 1987
 Signature Date

Certificate Ready for Filing: Dale B. Stage 2/24/87
 District Ranger Date