

U.S. PUBLIC LAND SURVEY MONUMENT RECORD

Index No. N-5

State of Wisconsin }
County of FOREST } ss.

History of original corner establishment:

Original Government Survey in 1859 by William Daugherty.

Tamarack 10" N39°E 20 links
Tamarack 8" S39°W 49 links

I, John Schulke, do hereby certify that on the 14th day of October, 1986, I found evidence of the Southwest corner of Section 17 Township 37 North, Range 12 East, Fourth Principal Meridian, as described hereon; and that from this evidence I established a new monument and accessories as described hereon to perpetuate the original location of this corner.

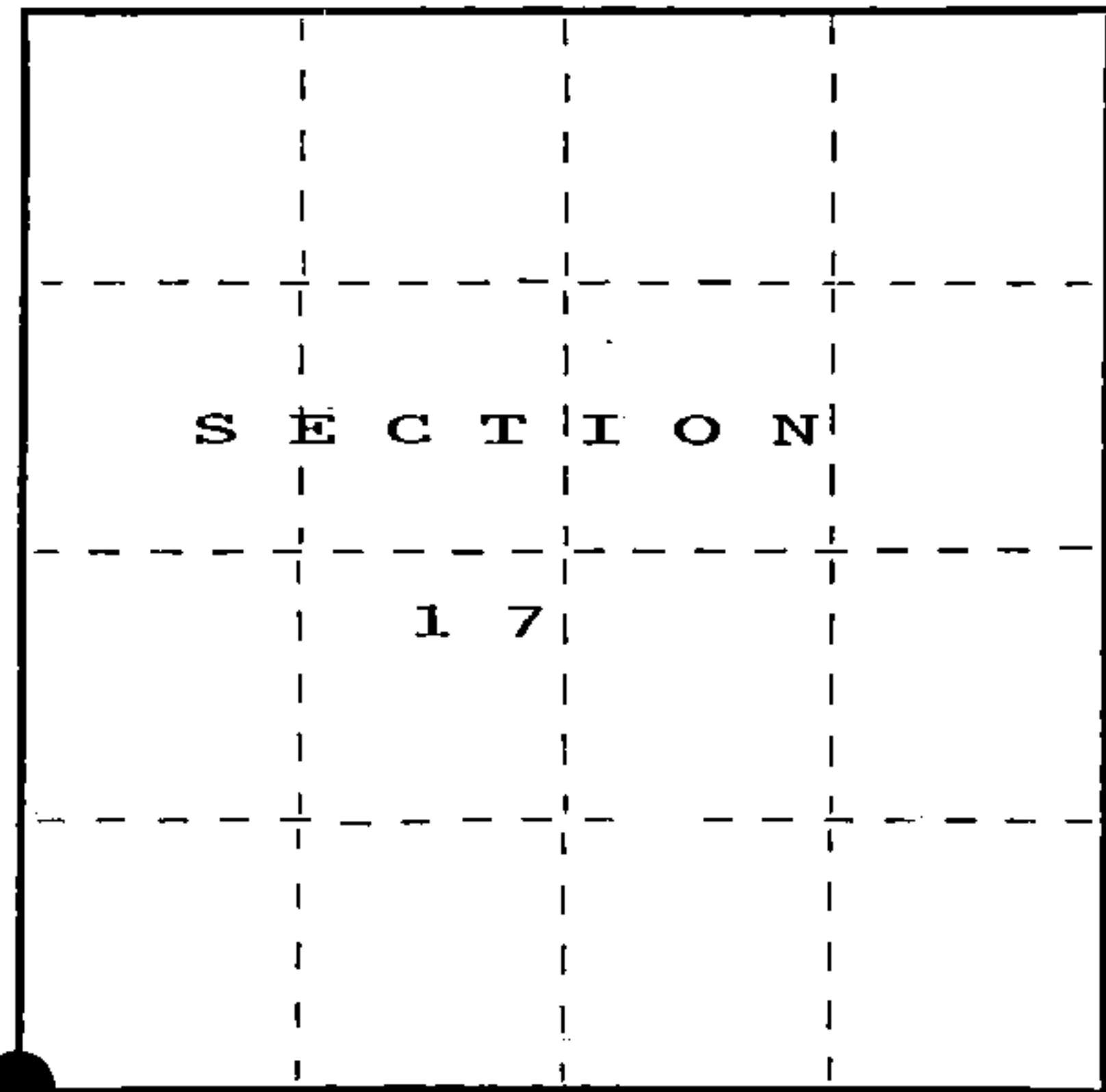
Description of corner evidence found:
Found no evidence.

Resident witnesses:

.....
.....
.....

Description of monument and accessories I established to perpetuate the original location of this corner. Set a 2 1/2" diameter aluminum pipe monument, 5 feet long, 4 feet in the ground, with an aluminum cap stamped; T37N, R12E, S17, S18, S19, S20, 1986, S-1665. Established the following new bearing trees which are blazed, scribed, painted and tagged.

Spruce 4" N28°E 5.38 feet
Spruce 6" S88°E 15.16 feet
Spruce 6" S05°E 5.67 feet
Spruce 5" N69°W 38.84 feet
Steel sign post Southeast 1.0 feet



○ = Corner monument restored.

Dated at Ludington, Michigan, this fifth day of January, 1987

Signature John C. Schulke Title Land Surveyor Registration No. S-1665
(County Surveyor, Registered Land Surveyor, or other duly authorized official)

Office of Register of Deeds, County of Forest, I hereby certify that the within instrument was filed in this office for record on the 24th day of February, 1987 at 2:00 o'clock P. M.

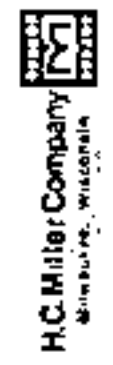
Paul Aschenbrenner
(Register of Deeds)

By _____ Deputy

REGISTER'S OFFICE
Forest County, Wis.

Received for record this 24th day of February, A.D., 1987 at 8:00 o'clock P.M. and recorded in Vol. CORNER RESTORATIONS page N-5
Paul Aschenbrenner
Register of Deeds

FORM NO. 985-A



Stock No. 26273

DOCUMENT NUMBER
132182

4371218 00008

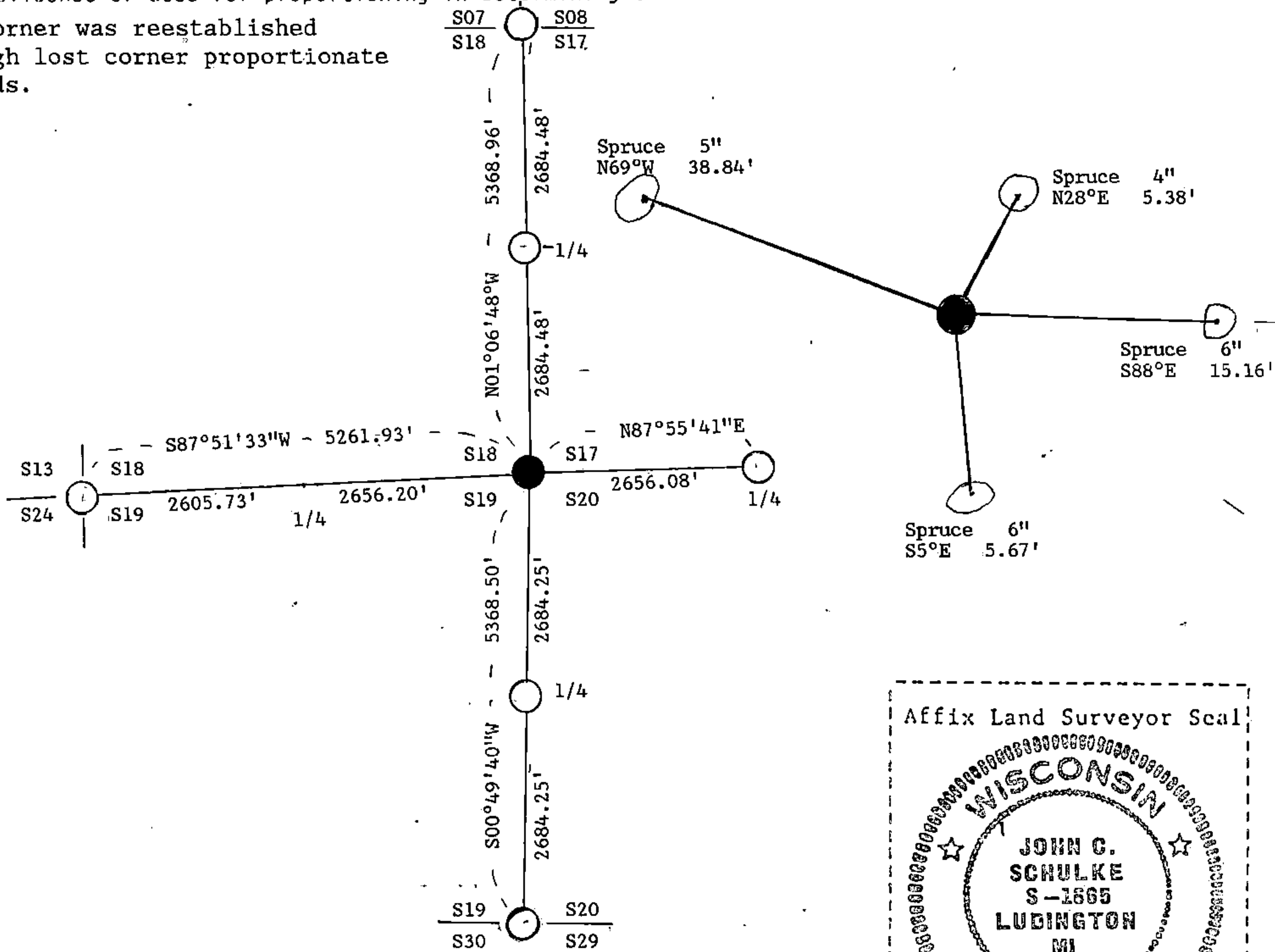
(e) Describe any material discrepancy between the location of the corner as restored or reestablished and the location of that corner as previously restored or reestablished by distance and direction. Show the discrepancy on the plan view drawing under (d), above. Show the distances between the corner as previously restored or reestablished and (1) the corner as restored or reestablished, and (2) to at least 2 of the witness monuments shown on the drawing in (d), above.

No discrepancy, first corner restoration.

(f) Was the corner restored through acceptance of (1) an obliterated evidence location, or, (2) a found perpetuated location?

(g&h) Was the corner reestablished through lost corner proportionate methods? If so, show the method, including the directions and distances to other public land survey corners used as evidence or used for proportioning in determining the corner location?

The corner was reestablished through lost corner proportionate methods.



(i) I, John C. Schulke
 (type or print name) certify that the corner location shown on this record was determined by me or under my direction and control and that this U.S. Public Land Survey Monument Record is correct and complete to the best of my knowledge and belief.

John C. Schulke January 5th, 1987
 Signature Date

Certificate Ready for Filing: Dale B. Staege 2/27/87
 District Ranger Date

U. S. PUBLIC LAND SURVEY MONUMENT RECORD

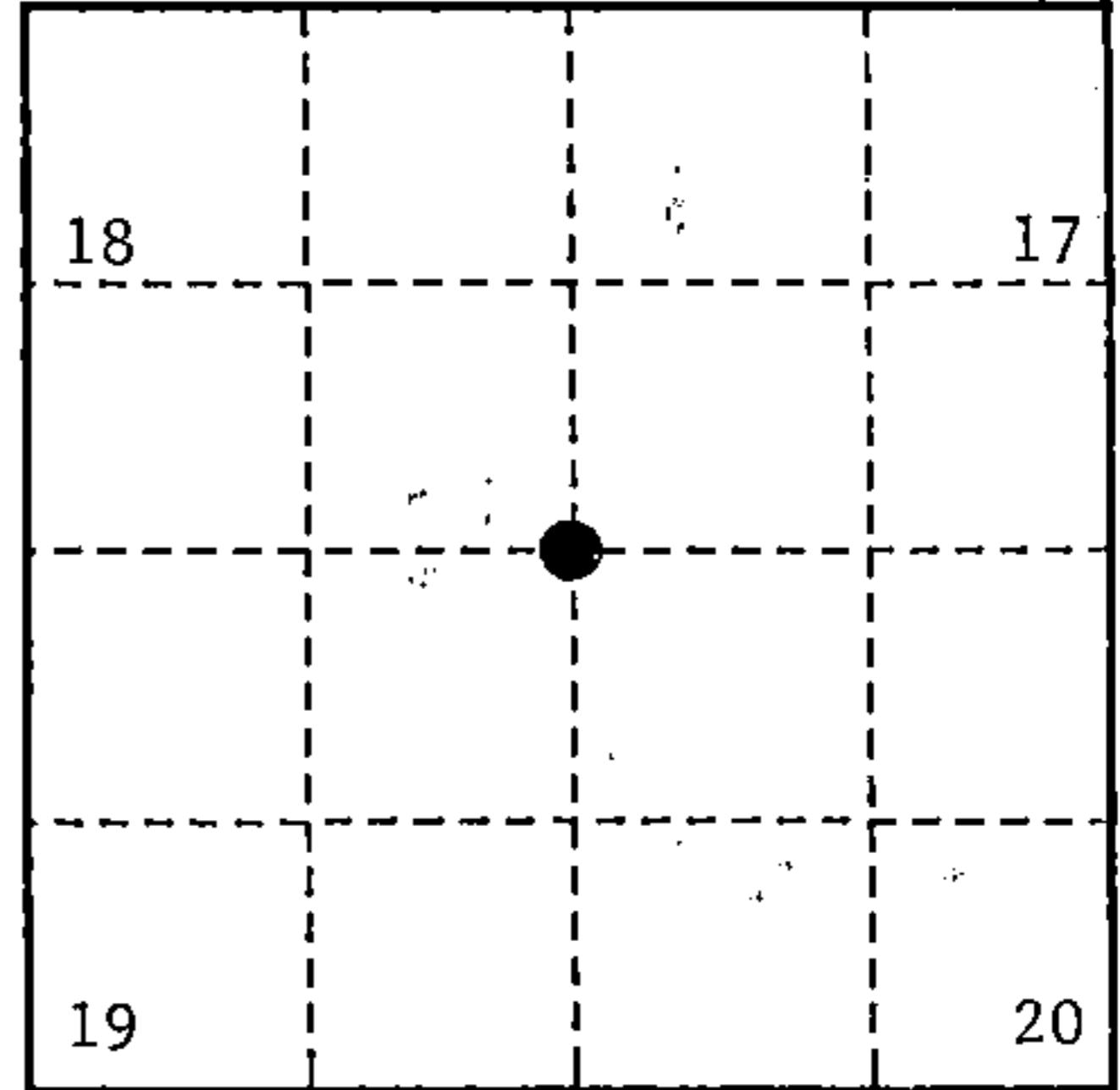
INSTRUCTIONS:

This record shall show the location of the corner and shall include all of the following nine elements (a through i).

(a) Identify the corner by reference to the U.S. public land survey system.

○ = Corner monument restored.

Section Corner to Sections 17, 18, 19, 20
T37N, R12E, Forest County, Wisconsin



(b) Describe any record evidence, monument evidence, occupational evidence, testimonial evidence or any other material evidence you considered, and whether the monument was found or placed.

Original Government Survey in 1859 by William E. Daughtery.

In 1986, John C. Schulke, RLS, restored the corner position by proportionate measurement and set a 2½" diameter aluminum pipe monument, 5 feet long, with an aluminum cap stamped as follows: T37N, R12E, S18, S17, S19, S20, 1986, S-1665, from which the following bear:

| | | | |
|-----------------|----|--------|------------|
| Spruce | 4" | N 28°E | 5.38 feet |
| Spruce | 6" | S 88°E | 15.16 feet |
| Spruce | 6" | S 05°E | 5.67 feet |
| Spruce | 5" | N 69°W | 38.84 feet |
| Steel sign post | | SE | 1.0 feet |

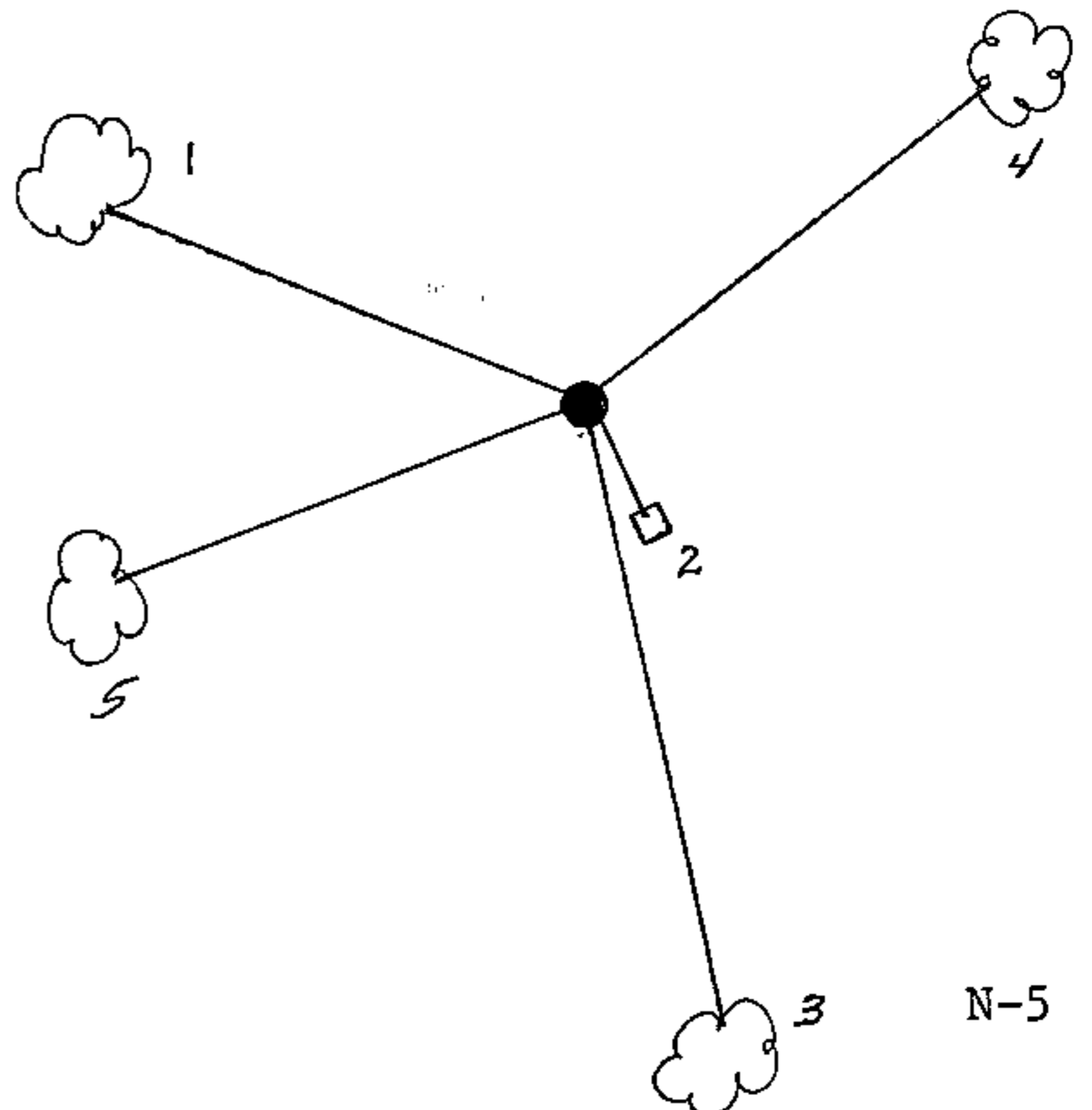
On 9/27/99, Gary L. Pisoni RLS, found the above monument and the assessories as described below.

See previous Land Corner Certificate dated February 24, 1987, Document Number 132182

(c) In the plan view drawing below, provide reference ties to at least 4 witness monuments, or, if the location is within a municipality, to at least 2 witness monuments. (witness monuments shall be made of concrete, natural stone, iron or other equally durable material.)

(d) Show a plan view drawing depicting the relevant monuments and reference ties which is sufficient in detail to enable accurate relocation of the corner monument if the corner monument is disturbed. Indicate north.

1. Spruce, 6", N 69°W, 38.84 feet
2. Steel sign post, SE, 1.0 feet
3. Black Spruce, 4", S 17°E, 11.49 feet (NBT)
4. Black Spruce, 5", N 43°E, 22.56 feet (NBT)
5. Black Spruce, 5", S 67°W, 48.37 feet (NBT)



REGISTER'S OFFICE }
Forest County, Wis. }
Received for record this 27th day
of October A.D. 1999 at
10:05 o'clock A.M. and recorded
in Vol. Corner Restorations
page N 5
Kay Swanson, Deputy
Register of Deeds

43712180000

(e) Describe any material discrepancy between the location of the corner as restored or reestablished and the location of that corner as previously restored or reestablished by distance and direction. Show the discrepancy on the plan view drawing under (d), above. Show the distances between the corner as previously restored or reestablished and (1) the corner as restored or reestablished, and (2) to at least 2 of the witness monuments shown on the drawing in (d), above.

None

(f) Was the corner restored through acceptance of (1) an obliterated evidence location, or, (2) a found perpetuated location?

Restored from accepted evidence.

(g & h) Was the corner reestablished through lost corner proportionate methods? If so, show the method, including the directions and distances to other public land survey corners used as evidence or used for proportioning in determining the corner location?

(1) I, Gary L. Pisoni
(type or print name) certify that the corner location shown on this record was determined by me or under my direction and control and that this U.S. Public Land Survey Monument Record is correct and complete to the best of my knowledge and belief.

Gary L. Pisoni
Signature

10-1-99
Date

CERTIFICATE READY FOR FILING:

[Signature]
District Ranger

