

U S PUBLIC LAND SURVEY MONUMENT RECORD - ADDENDUM

NOTE: This form is intended and designed to fulfill all requirements of Wisconsin Administrative Code, Chapter A-E 7.08 U.S. Public Land Survey Monument Record (3) (a-i)

A-E 7.08(3)(a) Identity of corner
SOUTHEAST CORNER OF SECTION 15
TOWNSHIP 37 NORTH
RANGE 12 EAST OF THE 4TH PM
TOWN OF HILES,
COUNTY OF FOREST

WISCORS - FOREST COUNTY
N: 610,933.395 USft (XXX,XXX.XX)
E: 819,940.424 USft (XXX,XXX.XX)
Datum: NAD83 (2011)
GNSS Method RTN - Direct
GNSS Control WISCORS VRS



The coordinate value shown has been verified by the average of two or more GPS observations at a markedly different time. Values shown in parenthesis, are previously published measurements.

A-E 7.08(3)(b) Description of any record evidence, monument evidence, occupational evidence, testimonial evidence, or any other material evidence.

Original Surveyor: William E. Daugherty

Date of Original Survey Commenced: August 17, 1859
Completed: August 23, 1859

Original Accessories:
Fir 12 S 26° W 37
Sugar 9 N 1° E 24

See Previous Monument Record: Index No. N-17 - Surveyor 1107 - William B. Cochrane

October 17, 1985 - Surveyor 1394 - Norman A. Harrison - indicates the position as "1/2" solid iron rod" on File #371223-19851017.
November 3, 1989 - Surveyor 1665 - John C. Schulke - indicates the position to be a "Iron pin at the corner with reference county monument stamped to identify the location of the corner" on File #371224-19891103.
October 1, 1999 - Surveyor 1731 - Kip W. Soder - indicates the position as "1" iron rod found in place" on File #371223-19991001.
October 27, 2003 - Surveyor 1731 - Kip W. Soder - indicates the position as "Iron rod found in place" on File #371214-20031027.
July 21, 2005 - Surveyor 1910 - Matthew E. Hoglund - indicates the position as "1/2" iron rod found " on File #371214-20050721.
December 14, 2005 - Surveyor 2197 - Michael A. Trembl - indicates the position as "2 1/2" forest county alum. mon. on File #371222-20051214.
April 9, 2021 - Surveyor 809-8 - Michael S. Hess - indicates the position as "1/2" iron rod" on File #371214-20210409.
October 10, 2013 - Surveyor 2118 - Michael L Oestreich - indicates the position as "iron bar found in place" on File #371223-20131010.

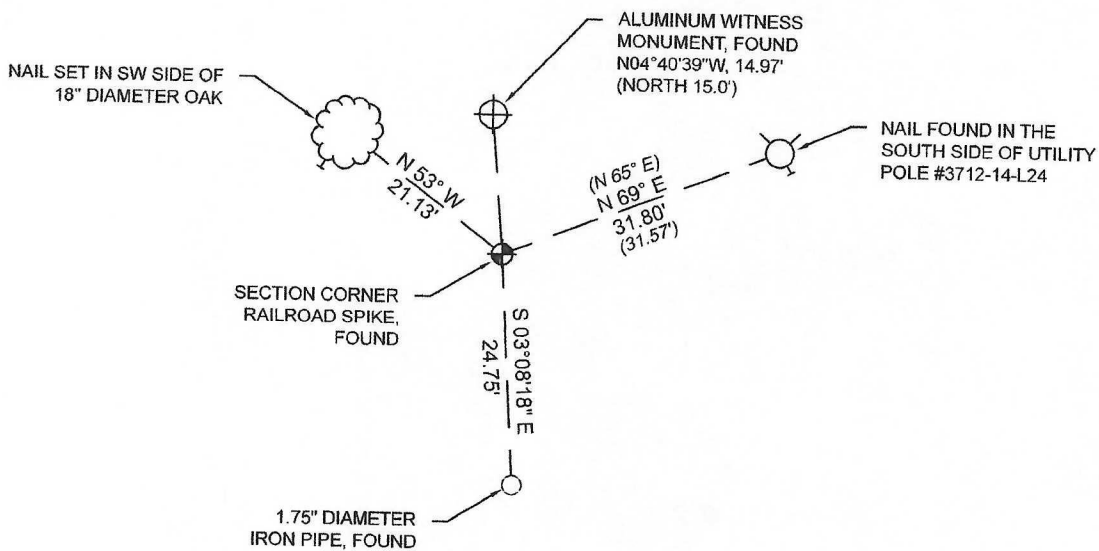
A-E 7.08(3)(f) Whether the corner was restored through acceptance of an obliterated location or a found perpetuated location.

October 26, 2021 - I found a railroad spike and Cochrane's 2 1/2" Berntsen, A-1 Federal Monument. I did not find an iron pin.

I accept this monument as a FOUND PERPETUATED LOCATION OF THE CORNER and established 3 new witnesses as shown below.

A-E 7.08(3)(c)(d)(e)(h) Plan view of corner with references to at least 4 witness monuments. If in disagreement with previously established corner, show the distances between the two corners and also indicate the ties to the disputed. The directions and distances to other public land survey corners used as evidence or used for determining the corner location.

BEARINGS LISTED TO THE NEAREST
SECOND ARE REFERENCED TO WISCONSIN
COUNTY COORDINATE REFERENCE
SYSTEM - FOREST COUNTY ZONE.
ALL OTHER BEARINGS ARE MAGNETIC.

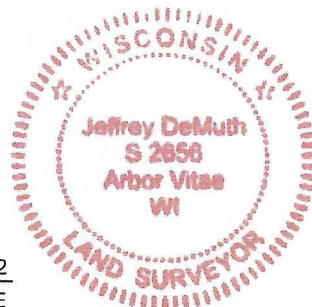


A-E 7.08(3)(i) I, Jeffrey L. DeMuth, Professional Land Surveyor No. S-2656, hereby certify that the corner location on this record was determined by me or under my direction and control and that this U.S. Public Land Survey Monument Record is correct and complete to the best of my knowledge, and belief

SIGNATURE

August 09, 2022

DATE



43712150000

CERTIFIED LAND CORNER RESTORATION

Index No. **N17**

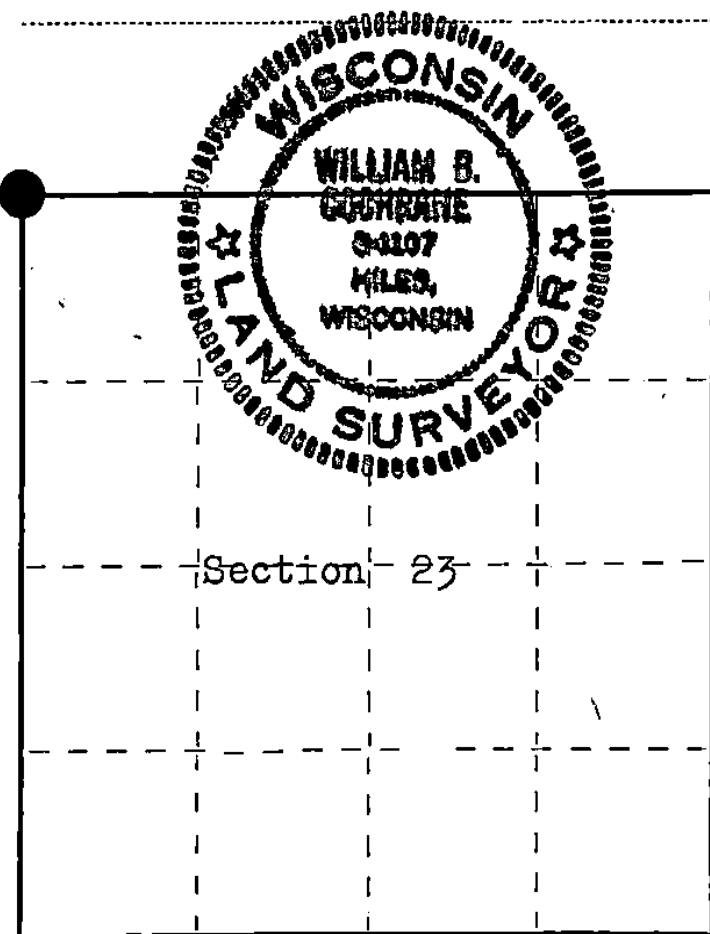
State of Wisconsin }
County of Forest } ss.

I William B. Cochrane, do hereby
certify that on the 14 th
day of August, 19 77, I found
evidence of the Northwest Section
corner of Section 23
Township 37 North, North, Range
12 East, Fourth Principal Meridian,
as described hereon; and that from this evidence
I established a new monument and accessories
as described hereon to perpetuate the original
location of this corner.

Resident witnesses:

Miles H. Cochrane

Brian James



○ = Corner monument restored.

History of original corner establishment:

Surveyed in 1859 by Wm. E. Daugherty
North between Sections 22 and 23.
80.00 chs. Set Post Corner to Sections 14, 15, 22, and 23.
Fir, 12", S 26° W, 37 lks.
Sugar, 9", N 1° E, 24 lks.

Description of corner evidence found:

No original evidence was recovered. A gravel road West, Blacktop road East and South. An iron pin was recovered on the centerline of the East-West road and in line with the West edge of the road South. This position has been used by other Surveyors and the adjacent property owners. I accept this as being the best available evidence of the Corner position.

Description of monument and accessories I established to perpetuate the original location of this corner.

From the iron pin found, I set a 2½" Berntsen, A-1 Federal Monument, 30 inches long, 15.0 feet North, with cap stamped:

T37N R12E, S14, S15, S22, S23, 1977, S-1107, REFERENCE MONUMENT 15ft

From the iron pin: Power Pole #3712-14L24, bears N 65° E, 31.57 ft.
Power Pole #3712-15R32, bears N 15° W, 13.25 ft.

No other accessories were available.

Dated at Hiles, Wis., this 22 nd day of August, 19 77.

Signature William B. Cochrane Title Land Surveyor Registration No. S-1107
(County Surveyor, Registered Land Surveyor, or other duly authorized official)

Office of Register of Deeds, County of FOREST, I hereby certify that the within
instrument was filed in this office for record on the 23rd day of AUGUST, 19 77
at 10:10 o'clock A. M.

Eugene Staszny
(Register of Deeds)

DOCUMENT NUMBER -- **112173**

By _____ Deputy