

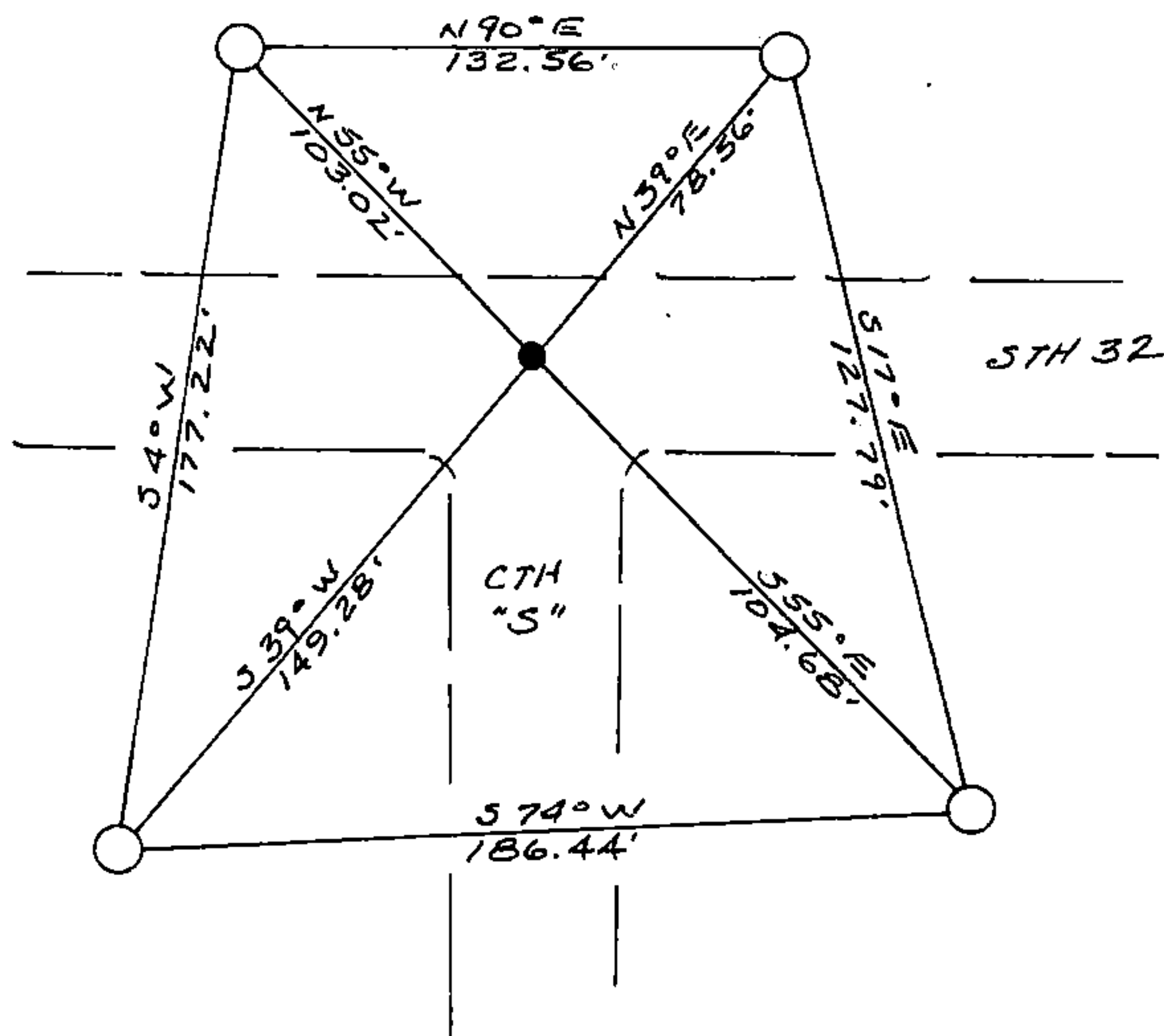
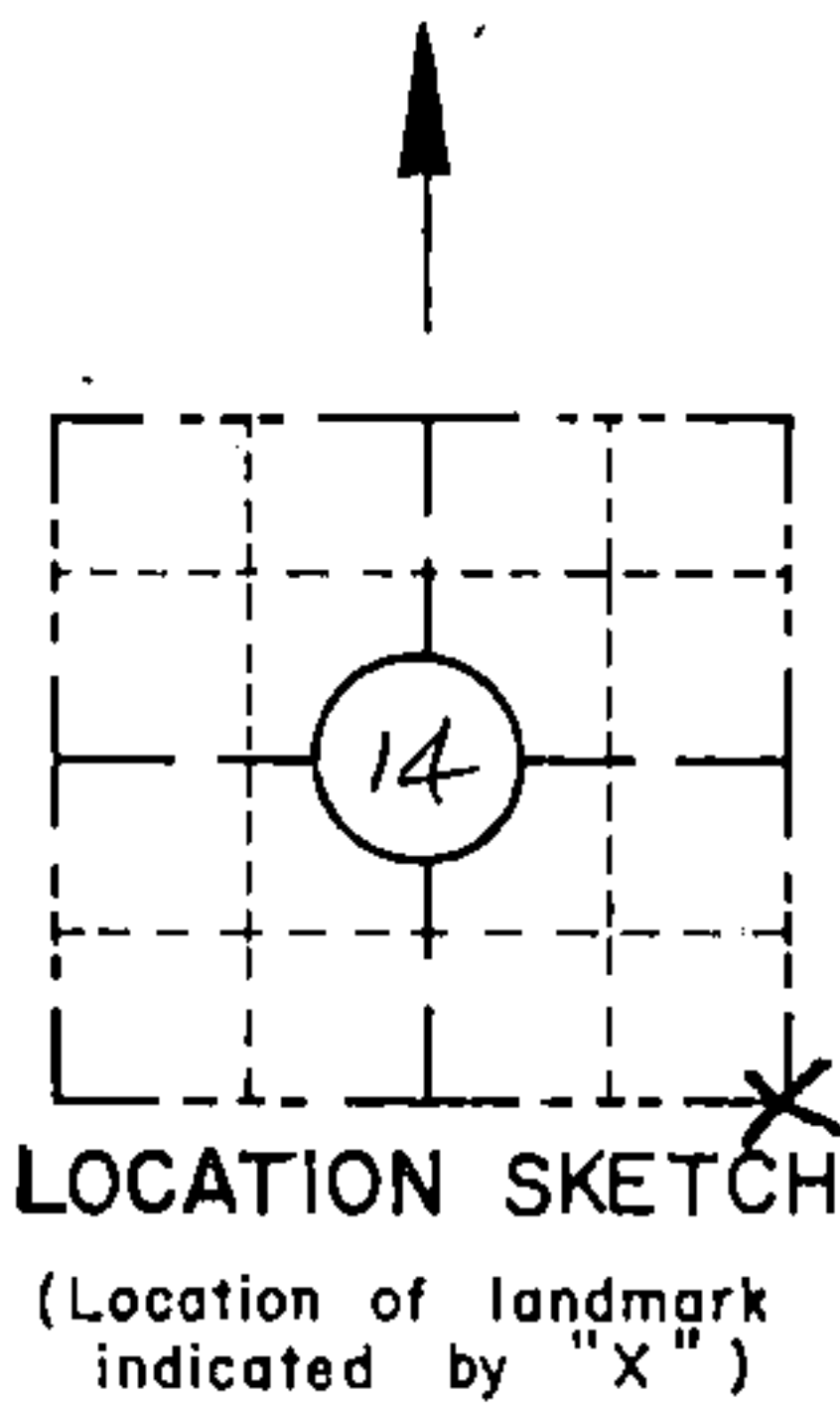
**ORIGINAL ON FILE IN CO CLERK'S OFFICE  
COPY HERE FOR REFERENCE**

**RECORD AND CERTIFICATION OF U.S.  
PUBLIC LAND SURVEY CONTROL STATION**  
E-D-716-72

State of Wisconsin / Department of Transportation

District 7	Project I. D. 9261-03-00	Located by R.B. JOHNSON - SURVEY CREW CHIEF			
Corner S.E. COR. 14 SECTION	Township 37 N	Range (E,W) 12 E	County FOREST		
Wisconsin Coordinates CORNER	East (X) 2,269,658.07	North (Y) 189,575.00	Elevation (Z)	Zone N	
Control Station Name	East (X)	North (Y)	Elevation (Z)	Zone	
Horizontal —	NAD 83 (1991) NORTH AMERICAN, 1983	CONTROL DATUM	Vertical — MEAN SEA LEVEL, 1929 ADJUSTMENT		
Horizontal —	Order	SURVEY CONTROL	Vertical — Order		

**SKETCH**



CORNER  
SE COR (N-21)  
SECTION 14  
TOWN 37 N  
RANGE 12 E  
N-21

I hereby certify that on the 21st day of OCT. 1992, that I did locate the above corner which was evidenced by P.K. NAIL \_\_\_\_\_; I further certify that to perpetuate the location of such corner I did, at the exact location thereof, place a permanent marker consisting of \_\_\_\_\_; I further certify that I did establish 4 references or witness monuments consisting of BERNTSEN MAGNETIC ALUMINUM MONUMENTS WITH WISDOT CAPS located as shown above:

SEAL

Signature Registered Land Surveyor	Registration No. S--	Title
------------------------------------	-------------------------	-------

43712140000

CERTIFIED LAND CORNER RESTORATION

Index No. **N21**

State of Wisconsin }  
County of Forest } ss.

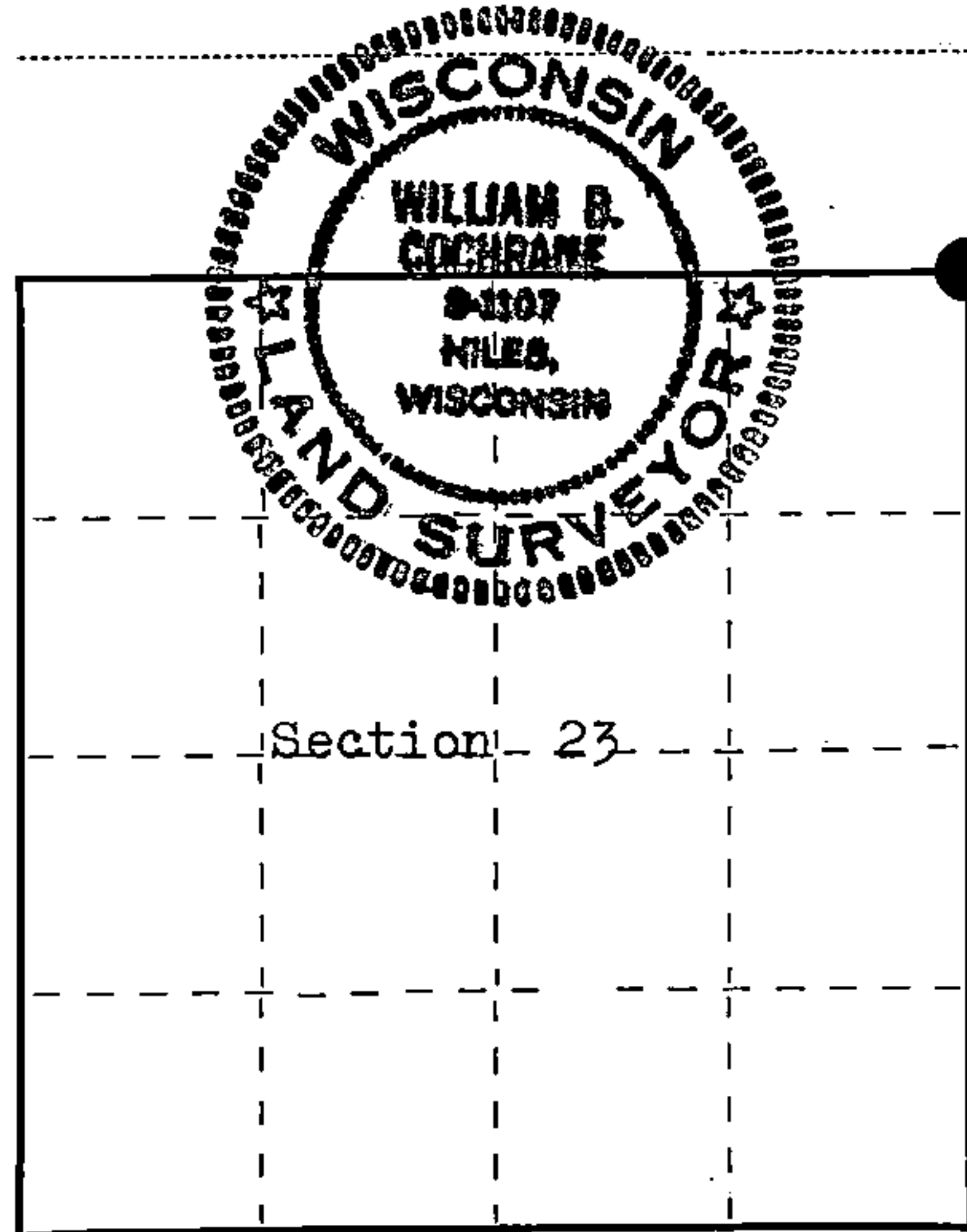
I, William B. Cochrane, do hereby certify that on the 16th day of August, 1977, I found evidence of the Northeast Section corner of Section 23 Township 37 North, Range 12 East, Fourth Principal Meridian, as described hereon; and that from this evidence I established a new monument and accessories as described hereon to perpetuate the original location of this corner.

Resident witnesses:

Miles H. Cochrane

Brian James

FORM 985 H. C. MILLER CO., MILWAUKEE



○ = Corner monument restored.

History of original corner establishment:

Surveyed in 1859 by Wm. E. Daugherty North between Sections 23 and 24. 80.00 chs. Set Post Corner to Sections 13, 14, 23, and 24. Elm, 10", S 29° W, 60 lks. Maple, 12", N 2° E, 339 lks.

Description of corner evidence found:

State Highway 32 East and West. County Highway "S" South. At the intersection of the highway centerlines and with a magnetic locator, I found evidence of an iron object buried beneath the road surface. I did not dig to recover the object. At this position I set a Railroad spike in the blacktop to mark the corner position.

Description of monument and accessories I established to perpetuate the original location of this corner.

From the Railroad spike, I set a 2½" Berntsen, A-1 Federal Monument, 30 inches long, 33.0 feet North, with cap stamped:

T37N R12E, S13, S14, S23, S24, 1977, S-1107, REFERENCE MONUMENT 33FT

From the Railroad spike: Power Pole #3712-13LI, bears N 34° E, 42.57 ft. Power Pole #3712-24WL, bears S 66° E, 70.18 ft.

No other accessories were available.

Dated at Hiles, Wis., this 22nd day of August, 1977.

Signature *William B. Cochrane* Title Land Surveyor Registration No. S-1107  
(County Surveyor, Registered Land Surveyor, or other duly authorized official)

Office of Register of Deeds, County of FOREST, I hereby certify that the within instrument was filed in this office for record on the 23rd day of AUGUST, 1977 at 10:10 o'clock A. M.

*Eugene Stutzman* (Register of Deeds) DOCUMENT NUMBER --- 112174

By \_\_\_\_\_ Deputy

43712140000