

U.S. PUBLIC LAND SURVEY MONUMENT RECORD

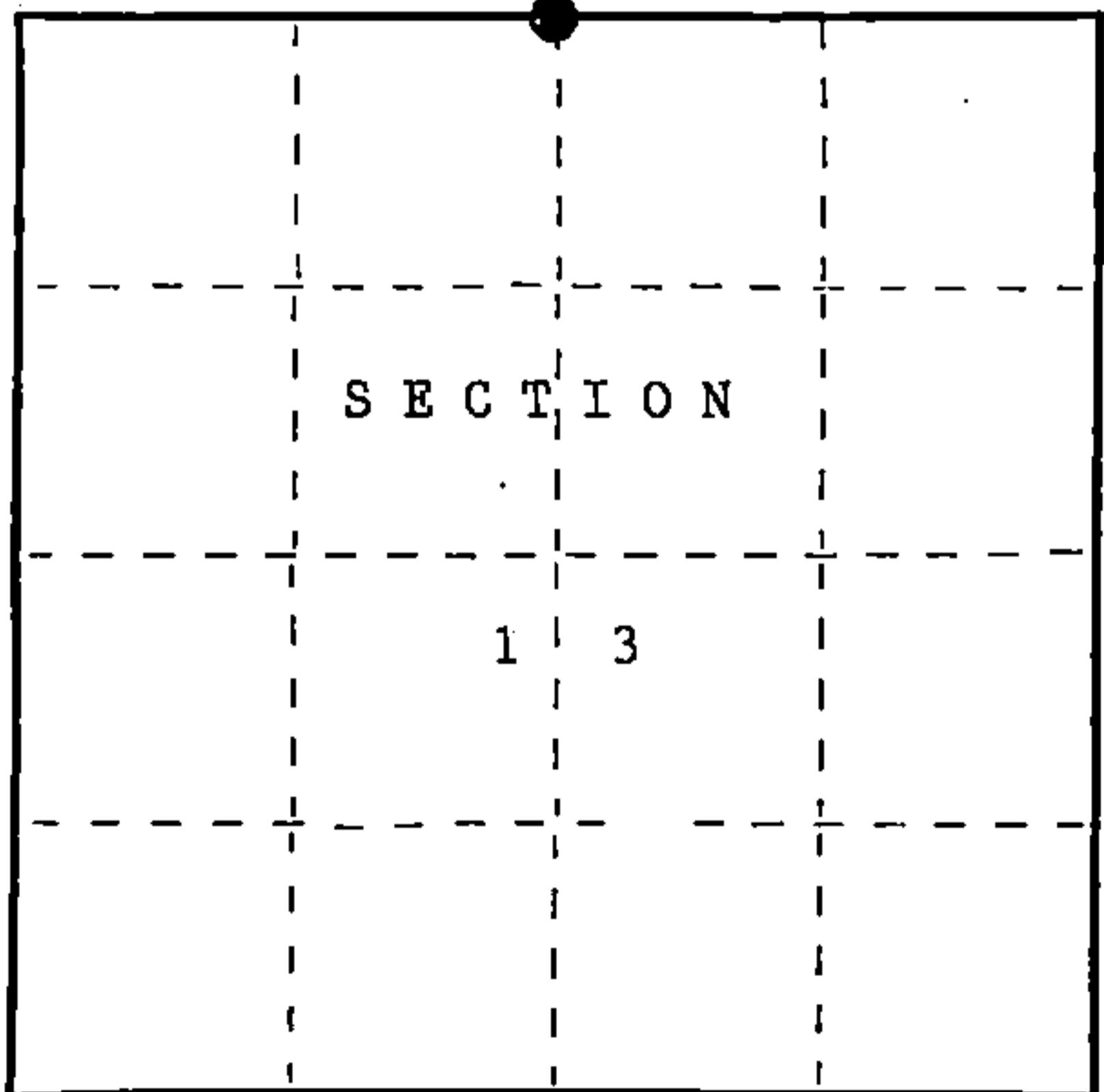
Index No. J-23

State of Wisconsin }  
 County of FOREST } ss.

I, John Schulke, do hereby certify that on the 22nd day of August, 1989, I found evidence of the North Quarter corner of Section 13 Township 37, North, Range 12 East, Fourth Principal Meridian, as described hereon; and that from this evidence I established a new monument and accessories as described hereon to perpetuate the original location of this corner.

Resident witnesses:

.....  
 .....  
 .....



● = Corner monument restored.

History of original corner establishment:

In 1859, Original Government Surveyed by Wm. E. Daugherty. Set a wood post with the following corner references: Maple 12" S44°E 25 lks. Birch 14" N32°E 35 lks.

Description of corner evidence found:

In 1989, John Schulke found no evidence.

Description of monument and accessories I established to perpetuate the original location of this corner.

Set a 2 1/2" Dia. X 36" aluminum magnetic cap monument stamped to identify the corner. Monument placed in a mound of stones. Set a steel sign post 0.3 ft. Southeast of the monument. The following corner references:

Balsam	7"	N75°W	28.08 ft.
Black-Ash	8"	N17°E	37.04 ft.
Black Ash	10"	N70°E	53.16 ft.
Black Ash	8"	S17°E	18.24 ft.

Dated at Wabeno, Wis., this 25th day of October, 1989.

Signature John C. Schulke Title Register Land Surveyor Registration No. S-1665  
 (County Surveyor, Registered Land Surveyor, or other duly authorized official)

Office of Register of Deeds, County of Forest, I hereby certify that the within instrument was filed in this office for record on the 8th day of March, 1990 at 1:00 o'clock P. M.

Paul Achenbrenner  
 (Register of Deeds)

By.....Deputy

FORM NO. 985-A

H.C. Miller Company

Stock No. 26273

DOCUMENT NUMBER

139257

43712120020

(e) Describe any material discrepancy between the location of the corner as restored or reestablished and the location of that corner as previously restored or reestablished by distance and direction. Show the discrepancy on the plan view drawing under (d), above. Show the distances between the corner as previously restored or reestablished and (1) the corner as restored or reestablished, and (2) to at least 2 of the witness monuments shown on the drawing in (d), above.

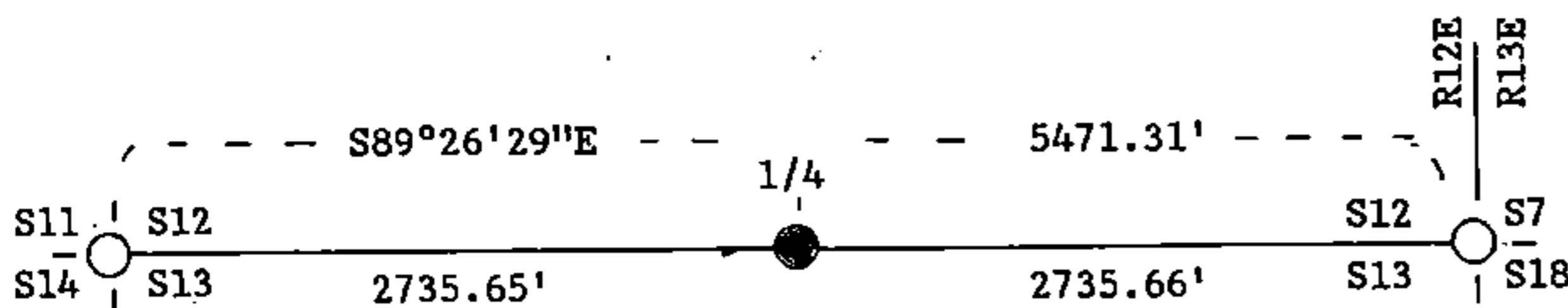
No.

(f) Was the corner restored through acceptance of (1) an obliterated evidence location, or, (2) a found perpetuated location?

Neither

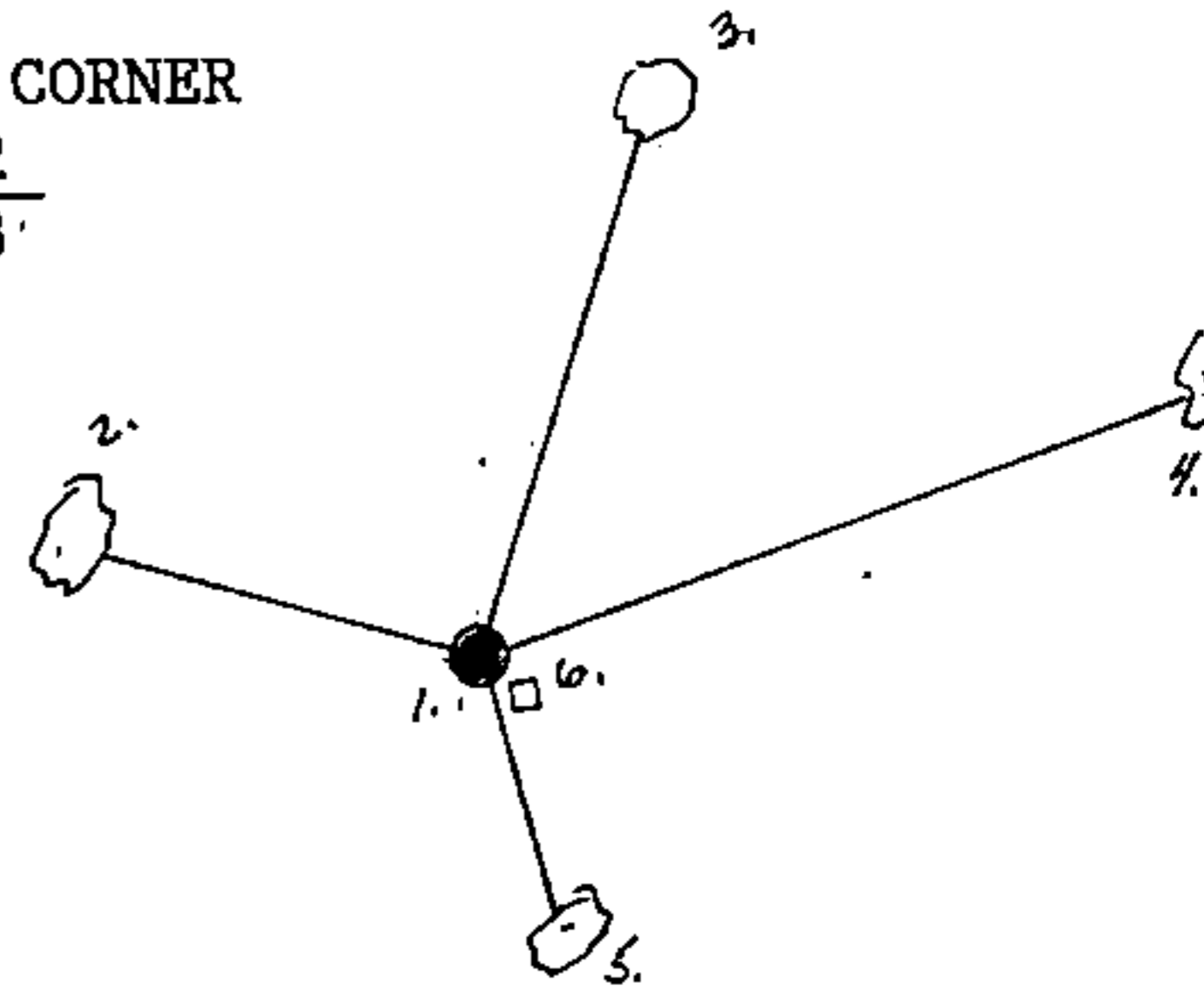
(g&h) Was the corner reestablished through lost corner proportionate methods? If so, show the method, including the directions and distances to other public land survey corners used as evidence or used for proportioning in determining the corner location?

Yes.



QUARTER CORNER

S12  
S13



1. 2 1/2" X 36" aluminum monument.
2. Balsam 7" N75°W 28.08 ft.
3. Black Ash 8" N17°E 37.04 ft.
4. Black Ash 10" N70°E 53.16 ft.
5. Black Ash 8" S17°E 18.24 ft.
6. Steel sign post Southeast 0.3 ft.

(i) I, John Schulke (RLS-1665)  
 (type or print name) certify that the corner location shown on this record was determined by me or under my direction and control and that this U.S. Public Land Survey Monument Record is correct and complete to the best of my knowledge and belief.



John C Schulke Signature Oct 25th, 1989 Date

Survey requested by: Dale Staege District Ranger 1989 Date