

U.S. PUBLIC LAND SURVEY MONUMENT RECORD

Index No. G-17

State of Wisconsin }  
County of FOREST } ss.

I, John Schulke, do hereby certify that on the 22nd day of August, 1989, I found evidence of the East Quarter corner of Section 10 Township 37, North, Range 12 East, Fourth Principal Meridian, as described hereon; and that from this evidence I established a new monument and accessories as described hereon to perpetuate the original location of this corner.

Resident witnesses:  
\_\_\_\_\_  
\_\_\_\_\_  
\_\_\_\_\_

History of original corner establishment:

In 1859, Original Government Surveyed by Wm. E. Daugherty. Set a wood post with the following corner references: Lind 14" S50°E 11 lks. Birch 20" N62°W 25 lks.

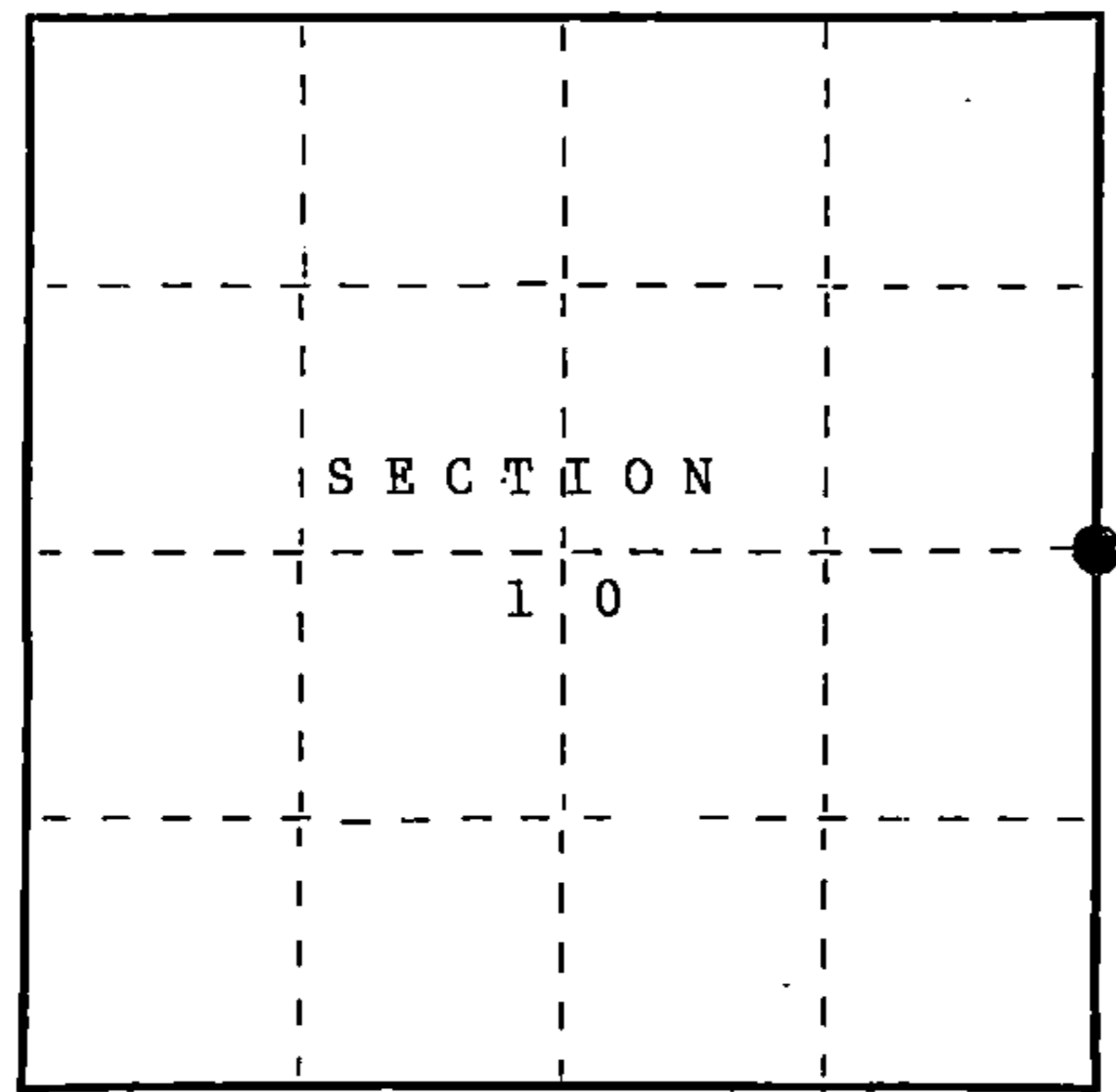
Corner described on the Certified Land Corner Restoration form filed in the Forest County Register of Deed's Office, Document #112382, in 1977 by Wm. Cochrane (S1107).

Description of corner evidence found:

Recovered 2 1/2" aluminum monument 0.2 ft. below the surface of the road without the cap. The following recovered corner references: Sugar Maple 7" N10°W 30.74 ft. Sugar Maple 8" S38°E 54.38 ft. Iron pipe 2" N02°E 33.0 ft.

Description of monument and accessories I established to perpetuate the original location of this corner.

Set a 2 1/2" dia. X 36" aluminum magnetic witness cap monument stamped to identify the location of the corner. Set a steel sign post 0.5 ft. South of the witness monument. Established the following bearing trees which are blazed, scribed, painted and tagged: Twin Black Ash 5" N17°E 42.91 ft. Witness monument 2 1/2" S7°14'W 33.00 ft.



● = Corner monument restored.

Dated at Waubesa, Wis., this 25th day of October, 1989

Signature John C. Schulke Title Register Land Surveyor Registration No. S-1665  
(County Surveyor, Registered Land Surveyor, or other duly authorized official)

Office of Register of Deeds, County of Forest, I hereby certify that the within instrument was filed in this office for record on the 8th day of March, 1990 at 1:00 o'clock P. M.

Paul Ackendrenner  
(Register of Deeds)

By \_\_\_\_\_ Deputy

FORM NO. 985-A  
H.C. Miller Company

Stock No. 26273

DOCUMENT NUMBER  
139253

437121029908

e) Describe any material discrepancy between the location of the corner as restored or reestablished and the location of that corner as previously restored or reestablished by distance and direction. Show the discrepancy on the plan view drawing under (d), above. Show the distances between the corner as previously restored or reestablished and (1) the corner as restored or reestablished, and (2) to at least 2 of the witness monuments shown on the drawing in (d), above.

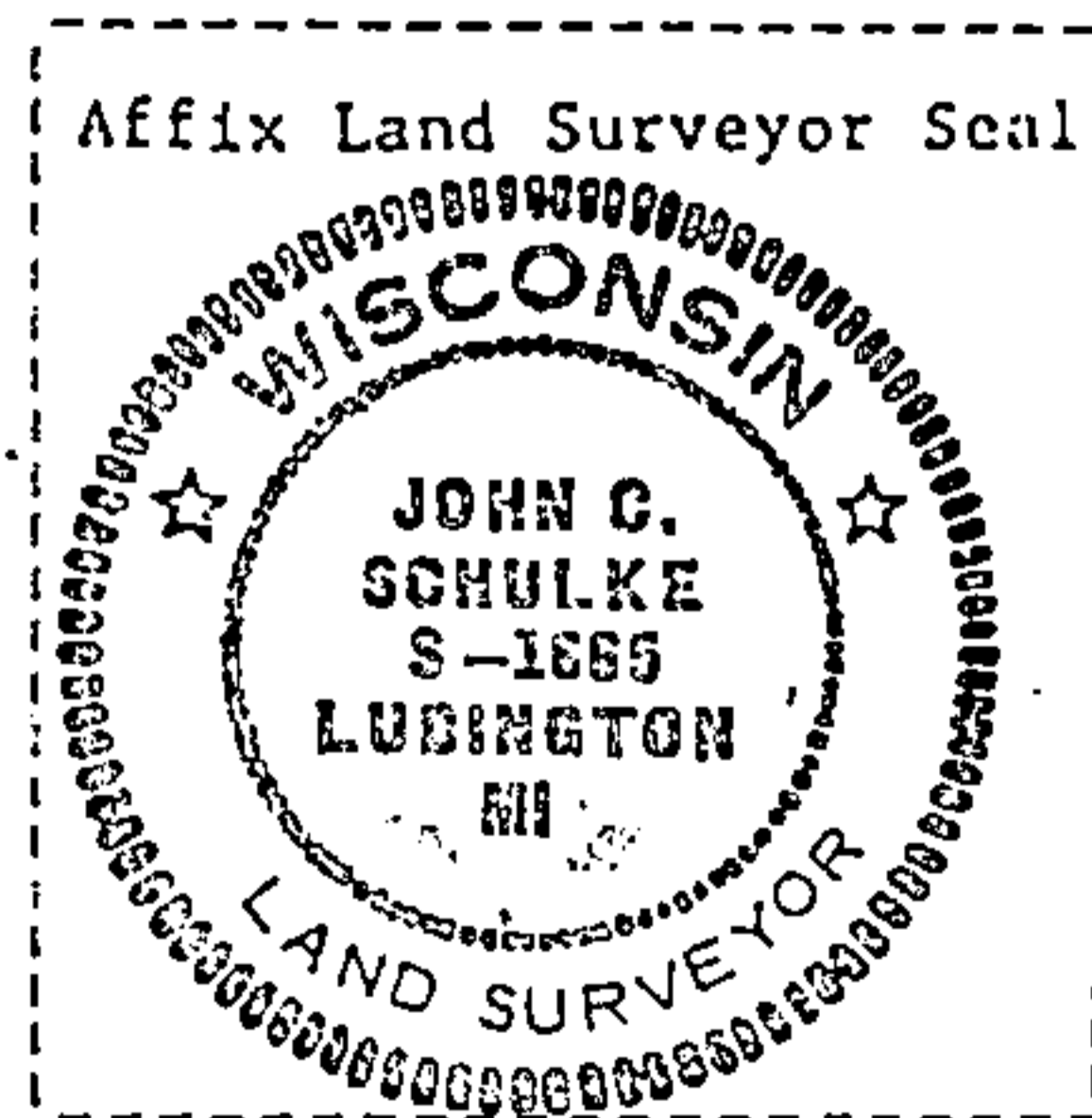
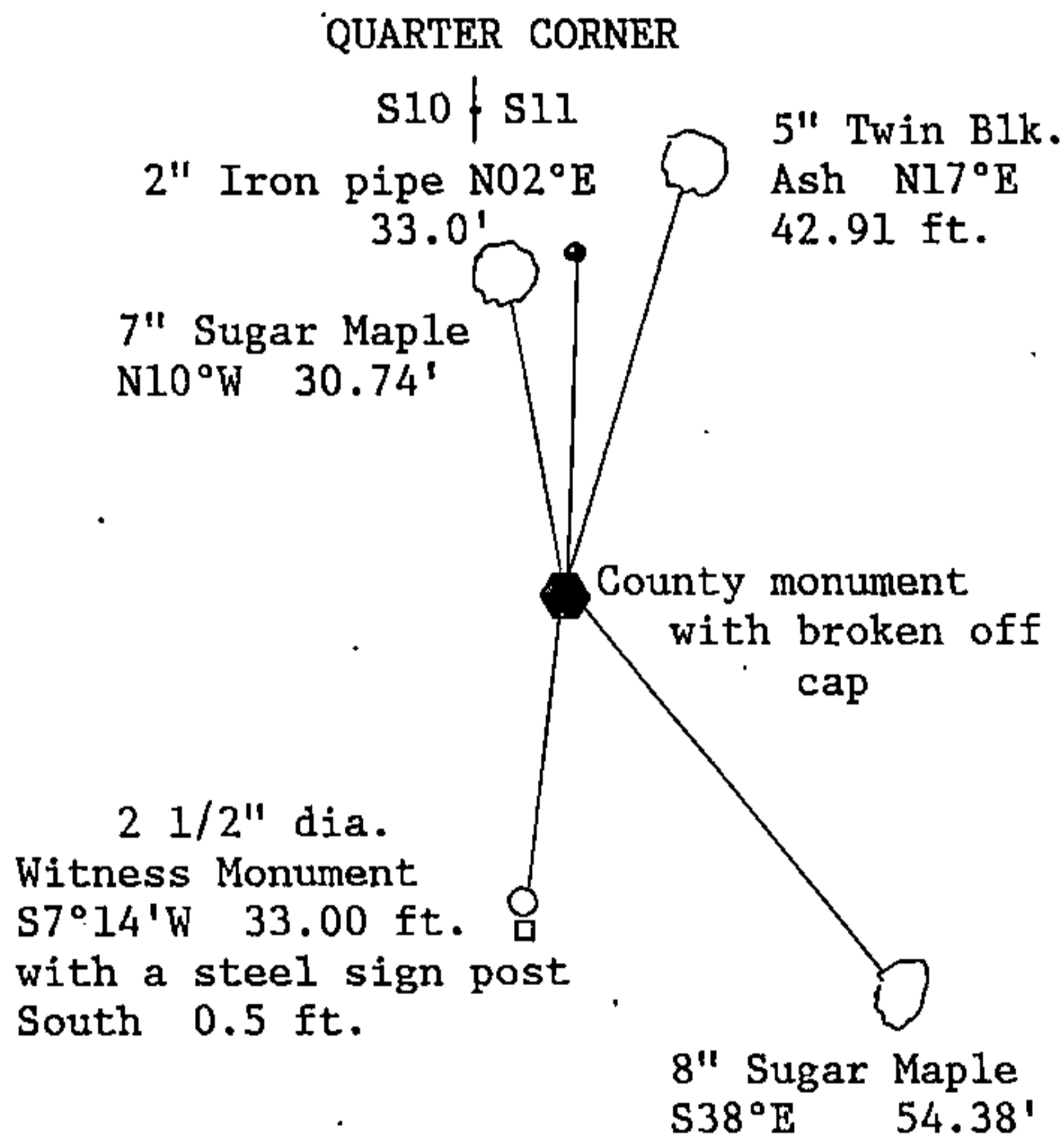
No.

(f) Was the corner restored through acceptance of (1) an obliterated evidence location, or, (2) a found perpetuated location?

(2) a found perpetuated location.

(g&h) Was the corner reestablished through lost corner proportionate methods? If so, show the method, including the directions and distances to other public land survey corners used as evidence or used for proportioning in determining the corner location?

No.



(i) I, John Schulke (S-1665) certify that the corner location shown on this record was determined by me or under my direction and control and that this U.S. Public Land Survey Monument Record is correct and complete to the best of my knowledge and belief.

John Schulke Signature Oct 25th, 1989 Date

Survey requested by, Doris Stacey District Ranger 1989 Date

CERTIFIED LAND CORNER RESTORATION

Index No. **G 17**

State of Wisconsin }  
County of Forest } ss.

I William B. Cochrane, do hereby certify that on the 17 th day of September, 19 77, I found evidence of the East Quarter corner of Section 10 Township 37, North, Range 12 East, Fourth Principal Meridian, as described hereon; and that from this evidence I established a new monument and accessories as described hereon to perpetuate the original location of this corner.

Resident witnesses:

Miles H. Cochrane

History of original corner establishment:

Surveyed in 1859 by Wm. E. Daugherty North between Sections 10 and 11 40.00 chs Set Quarter Section post Lind, 14", S 50° E, 11 lks. Birch, 20", N 62° W, 25 lks.

Description of corner evidence found:

1½" diameter iron pipe, 33 feet North of and East-West road, center line. This position is tied to my subdivision of Section 10 and agrees with other surveys. This position was also agreed upon by the adjacent owners as being the corner in the center of the road.

Description of monument and accessories I established to perpetuate the original location of this corner.

At the corner position, 33 feet South of the iron pipe found, I set a 2½" Berntsen A-1 Federal Monument, 30 inches long 6 inches below the surface of the road with the cap stamped:

T37N R12E, ¼, S10, S11, 1977, S-1107

From which the following bear:

Maple, 7", N 8° W, 30.73 FT

Maple, 8", S 38° E, 54.46 FT

Dated at Hiles, Wis., this 19 th day of September, 19 77.

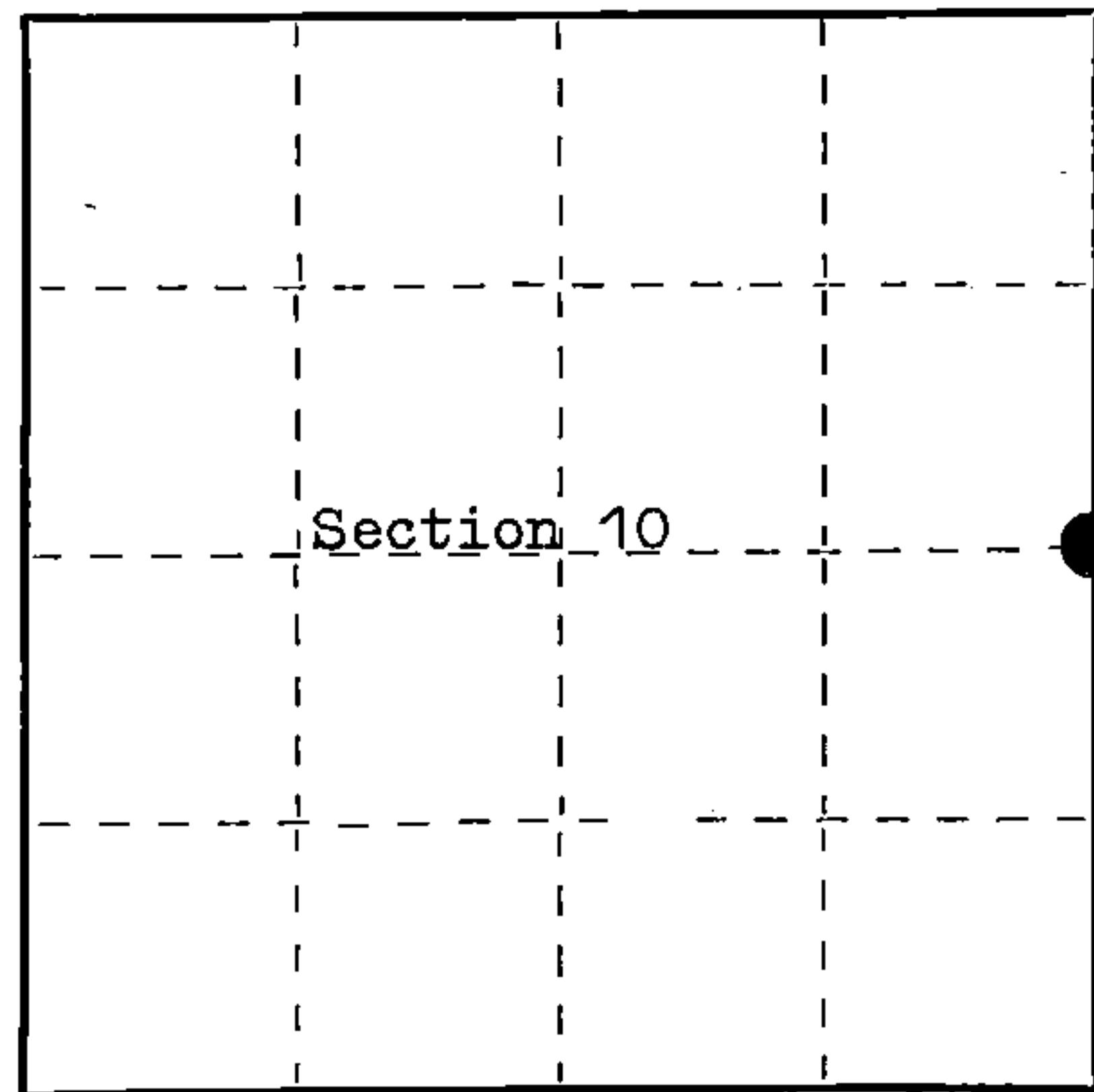
Signature William B. Cochrane Title Land Surveyor Registration No. S-1107  
(County Surveyor, Registered Land Surveyor, or other duly authorized official)

Office of Register of Deeds, County of FOREST, I hereby certify that the within instrument was filed in this office for record on the 20 th day of September, 19 77 at 9:00 o'clock A. M.

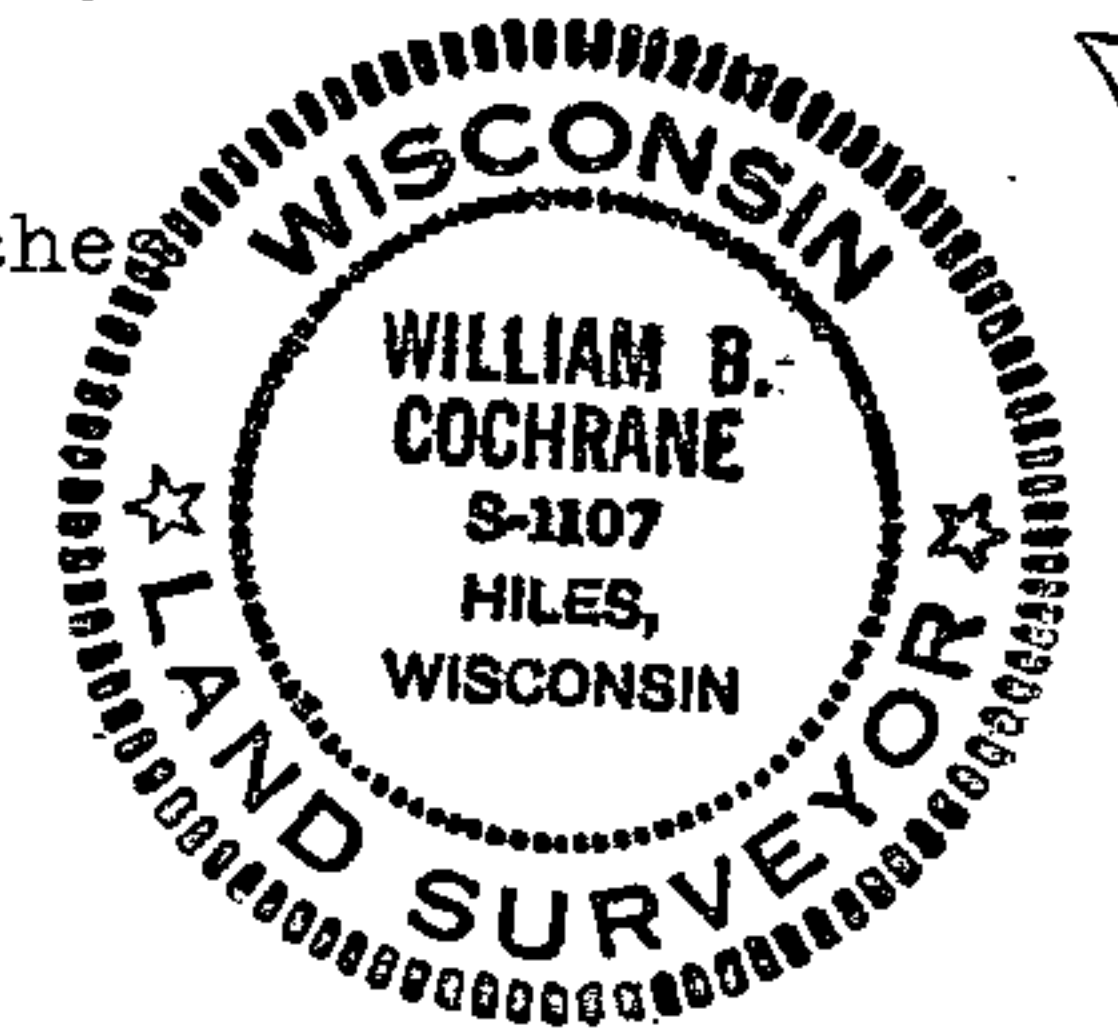
Eugene Stetyn  
(Register of Deeds)

By \_\_\_\_\_ Deputy

FORM 985 H. C. MILLER CO., MILWAUKEE



○ = Corner monument restored.



43712102000

DOCUMENT NUMBER **112382**