

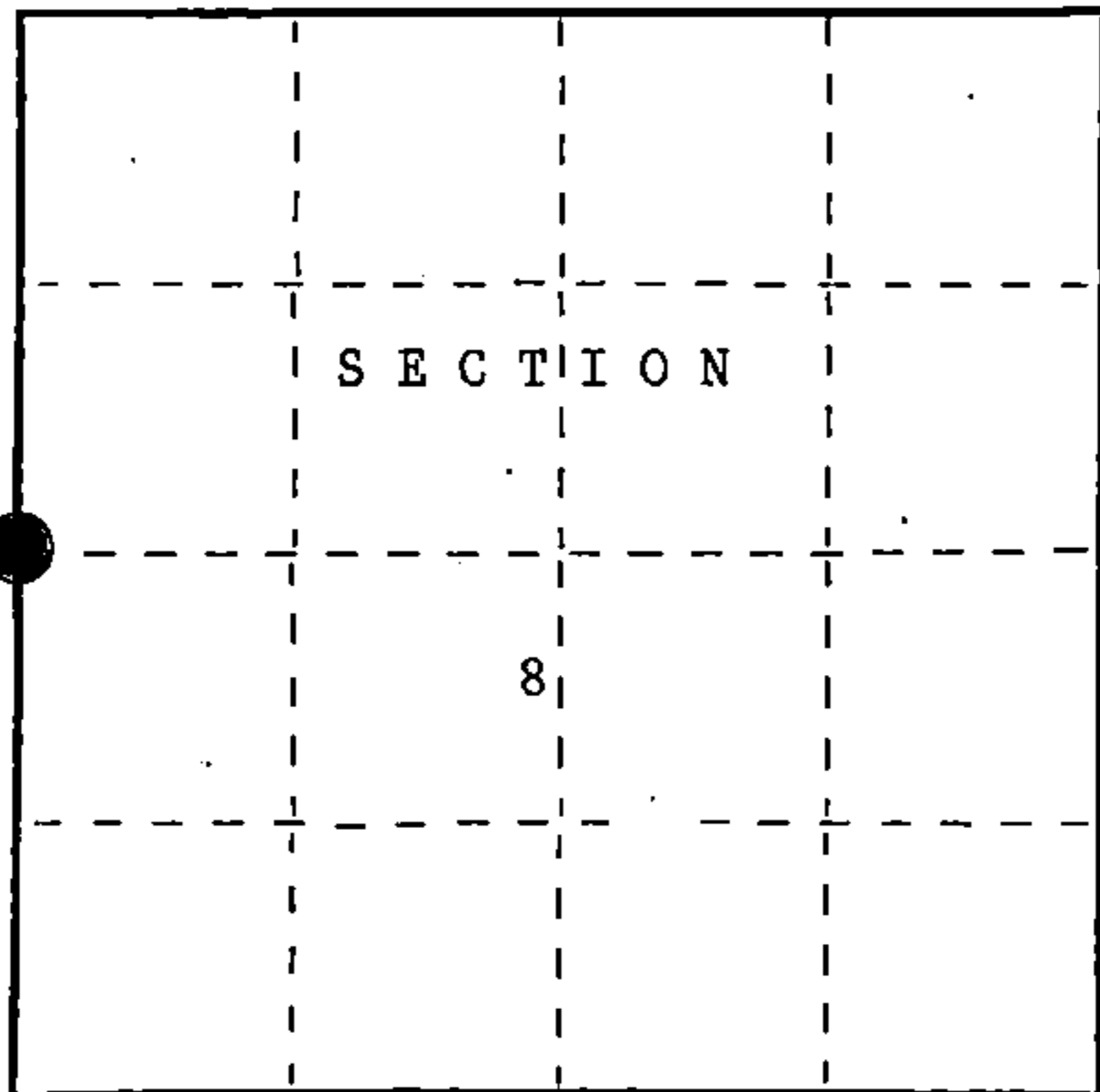
U.S. PUBLIC LAND SURVEY MONUMENT RECORD

Index No. G-5

State of Wisconsin }
County of Forest } ss.

I, John C. Schulke, do hereby certify that on the 8th day of May, 1987, I found evidence of the West Quarter corner of Section 8 Township Thirty-seven, North, Range twelve East, Fourth Principal Meridian, as described hereon; and that from this evidence I established a new monument and accessories as described hereon to perpetuate the original location of this corner.

Resident witnesses:



○ = Corner monument restored.

History of original corner establishment:

Original Government survey in 1859 by Wm. Daughter, U.S. Deputy Surveyor.

Set a wooden post with the following bearing trees:

Spruce	10"	N50°E	17 lks.
Pine	6"	S19°W	31 lks.

Description of corner evidence found:

Found no evidence.

Description of monument and accessories I established to perpetuate the original location of this corner.

Set 2 1/2" diameter aluminum pipe monument, 5 feet long, 4 feet in the ground with an aluminum cap stamped T37N, R12E, 1/4, S7, S8, 1987, S-1665. Established the following bearing trees which are blazed, scribed, painted and tagged.

Cedar	20"	N05°W	140.85 feet
White Pine	24"	S46°W	142.25 feet
Black Spruce	8"	N78°E	71.65 feet
Creek	10 feet wide	S46°W	17.0 feet
Steel sign post		Northeast	0.9 feet

Dated at Hiles, Wis., this Eleventh day of November, 1987.

Signature John C. Schulke Title Land Surveyor Registration No. S-1665
(County Surveyor, Registered Land Surveyor, or other duly authorized official)

Office of Register of Deeds, County of Forest, I hereby certify that the within instrument was filed in this office for record on the 2nd day of February, 1988 at 9:40 o'clock A.M.

Paul Achenbrenner
(Register of Deeds)

By Deputy

FORM NO. 985-A

H.C. Miller Company

Stock No. 26273

DOCUMENT NUMBER 134567

3/12/12
43712072000

(e) Describe any material discrepancy between the location of the corner as restored or reestablished and the location of that corner as previously restored or reestablished by distance and direction. Show the discrepancy on the plan view drawing under (d), above. Show the distances between the corner as previously restored or reestablished and (1) the corner as restored or reestablished, and (2) to at least 2 of the witness monuments shown on the drawing in (d), above.

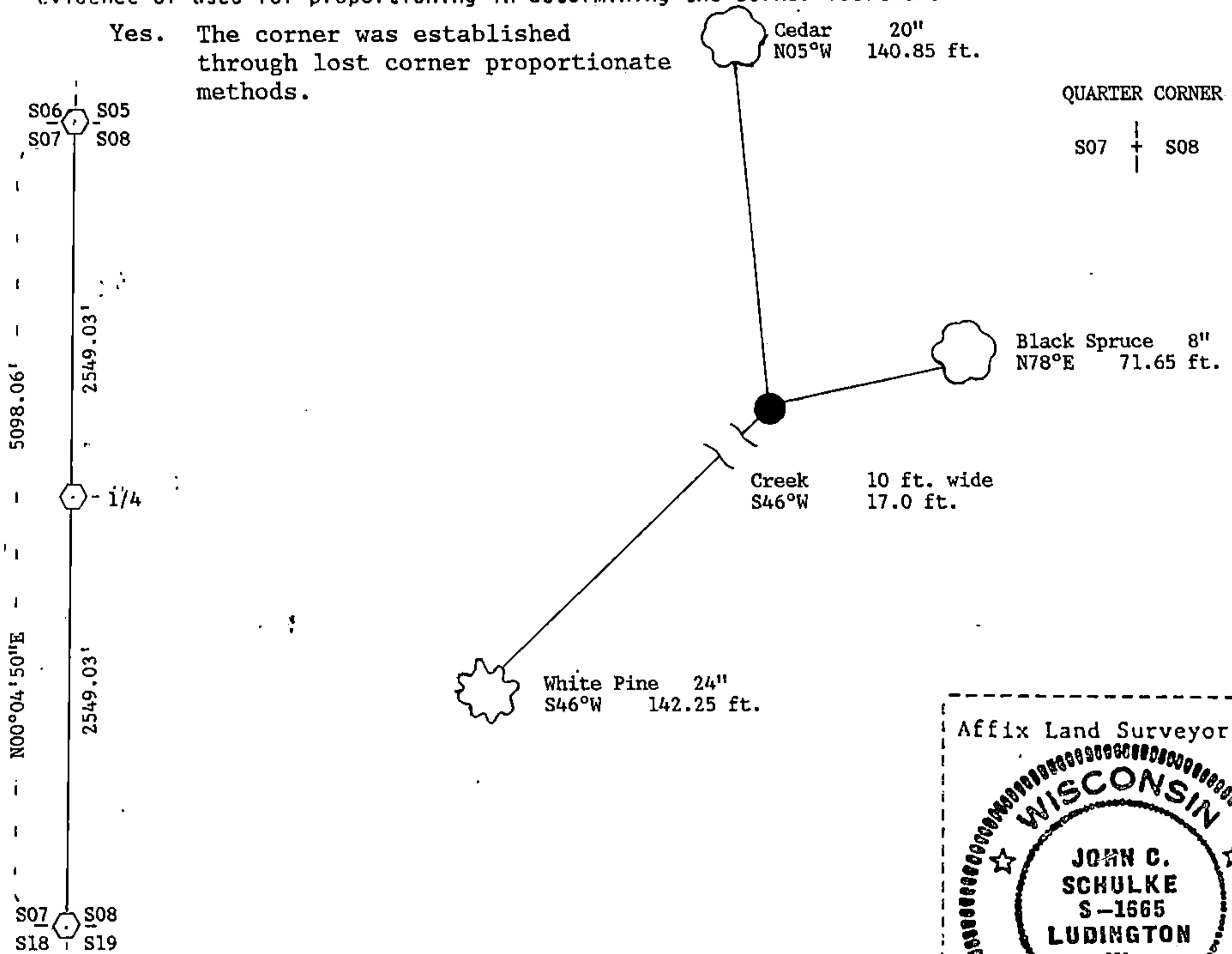
None

(f) Was the corner restored through acceptance of (1) an obliterated evidence location, or, (2) a found perpetuated location?

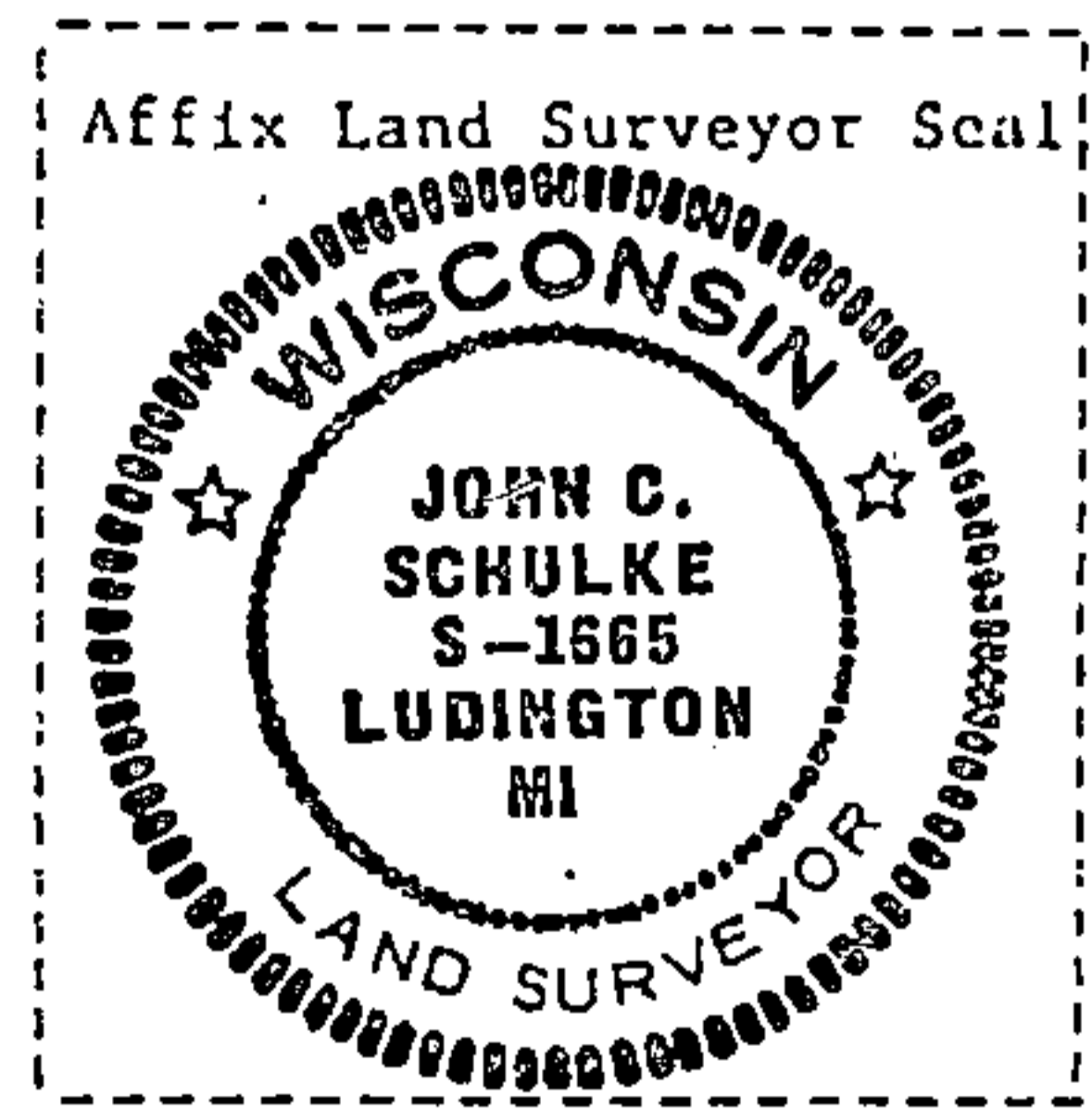
No. corner declared lost.

(g&h) Was the corner reestablished through lost corner proportionate methods? If so, show the method, including the directions and distances to other public land survey corners used as evidence or used for proportioning in determining the corner location?

Yes. The corner was established through lost corner proportionate methods.



QUARTER CORNER
S07 + S08



(i) I, John C. Schulke
(type or print name) certify that the corner location shown on this record was determined by me or under my direction and control and that this U.S. Public Land Survey Monument Record is correct and complete to the best of my knowledge and belief.

John C. Schulke Signature Nov 17, 1987 Date

Survey requested by: Dale Staege District Ranger 2/1/88 Date