

U.S. PUBLIC LAND SURVEY MONUMENT RECORD

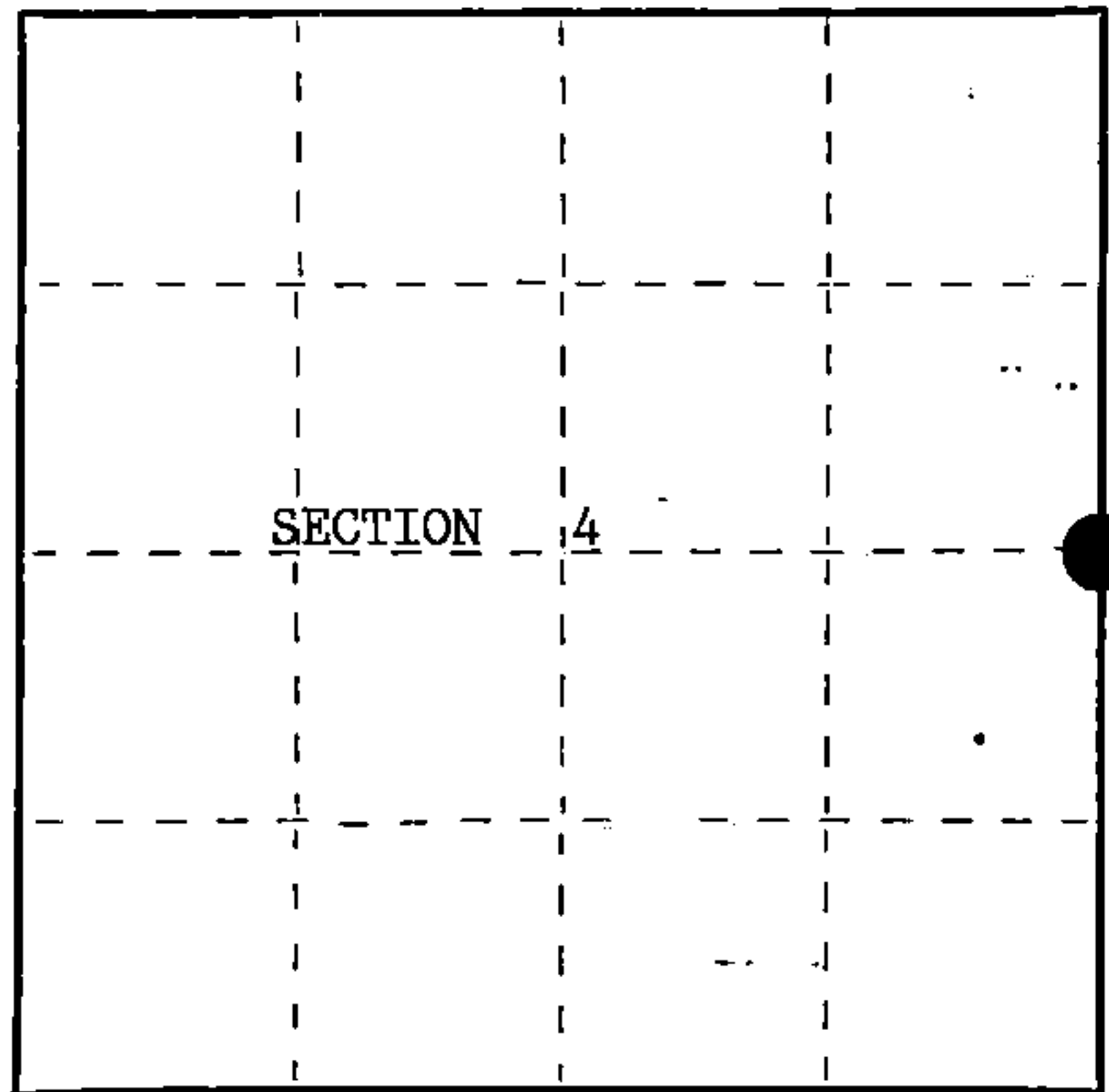
Index No. C-13

State of Wisconsin }
County of Forest } ss.

I, John C. Schulke, do hereby certify that on the 14th day of July, 1986, I found evidence of the East Quarter corner of Section 4 Township 37 North, Range 12 East, Fourth Principal Meridian, as described hereon; and that from this evidence I established a new monument and accessories as described hereon to perpetuate the original location of this corner.

Resident witnesses:

.....
.....
.....



○ = Corner monument restored.

History of original corner establishment:

Original Government Survey in 1859 by William E. Daugherty.

Birch 14" S89°E 11 links
Birch 8" S25°W 26 links

Description of corner evidence found:

No corner evidence found.

Description of monument and accessories I established to perpetuate the original location of this corner. Set a 2½ inch diameter aluminum pipe monument, 3 feet long, 2 feet in the ground, with an aluminum cap stamped: T37N, R12E, 1/4, S3, S4, 1986, S-1665. Established the following new bearing trees which are blazed, scribed, painted and tagged:

White Pine 35" S01°W 94.52 feet
Elm 8" N07°E 26.25 feet
Apple 11" S51°E 111.40 feet
Steel sign post set 1 foot Northwest

Dated at Ludington, Michigan ~~Wis~~, this fifth day of January, 1987.

Signature John C. Schulke Title Land Surveyor Registration No. S-1665
(County Surveyor, Registered Land Surveyor, or other duly authorized official)

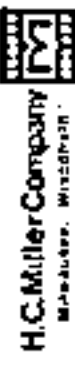
Office of Register of Deeds, County of Forest, I hereby certify that the within instrument was filed in this office for record on the 24th day of February, 1987, at 2:00 o'clock P. M.

Paul Achenbrenner
(Register of Deeds)

By.....Deputy

REGISTER'S OFFICE
Forest County, Wis.
Received for record this 24th day
of February A.D., 1987, at
2:00 o'clock P.M. and recorded
in Vol. CORNER RESTORATIONS
page C-13
Paul Achenbrenner
Register of Deeds

FORM NO. 985-A



Stock No. 26273

DOCUMENT NUMBER
132172

43712042000

(e) Describe any material discrepancy between the location of the corner as restored or reestablished and the location of that corner as previously restored or reestablished by distance and direction. Show the discrepancy on the plan view drawing under (d), above. Show the distances between the corner as previously restored or reestablished and (1) the corner as restored or reestablished, and (2) to at least 2 of the witness monuments shown on the drawing in (d), above.

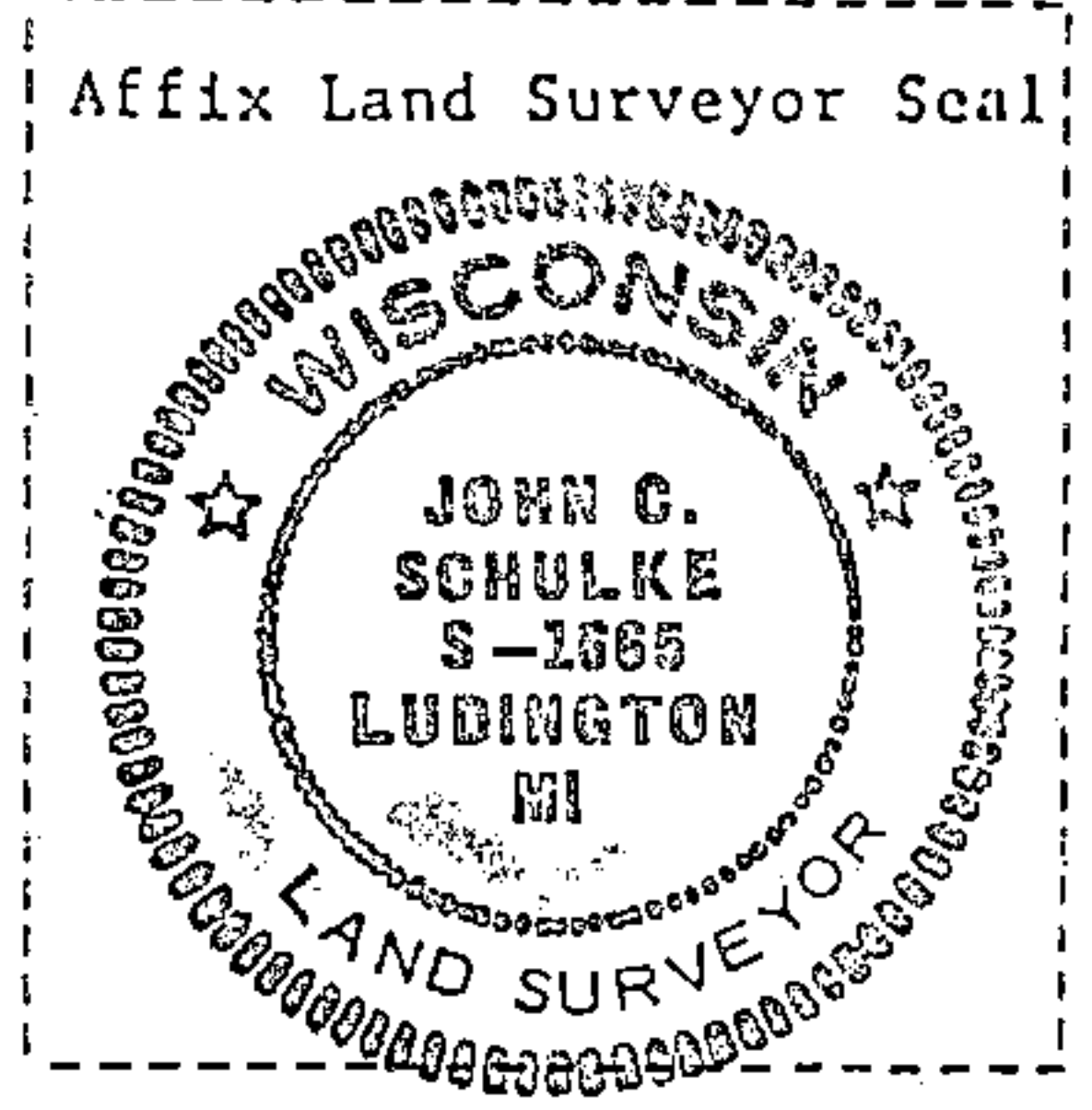
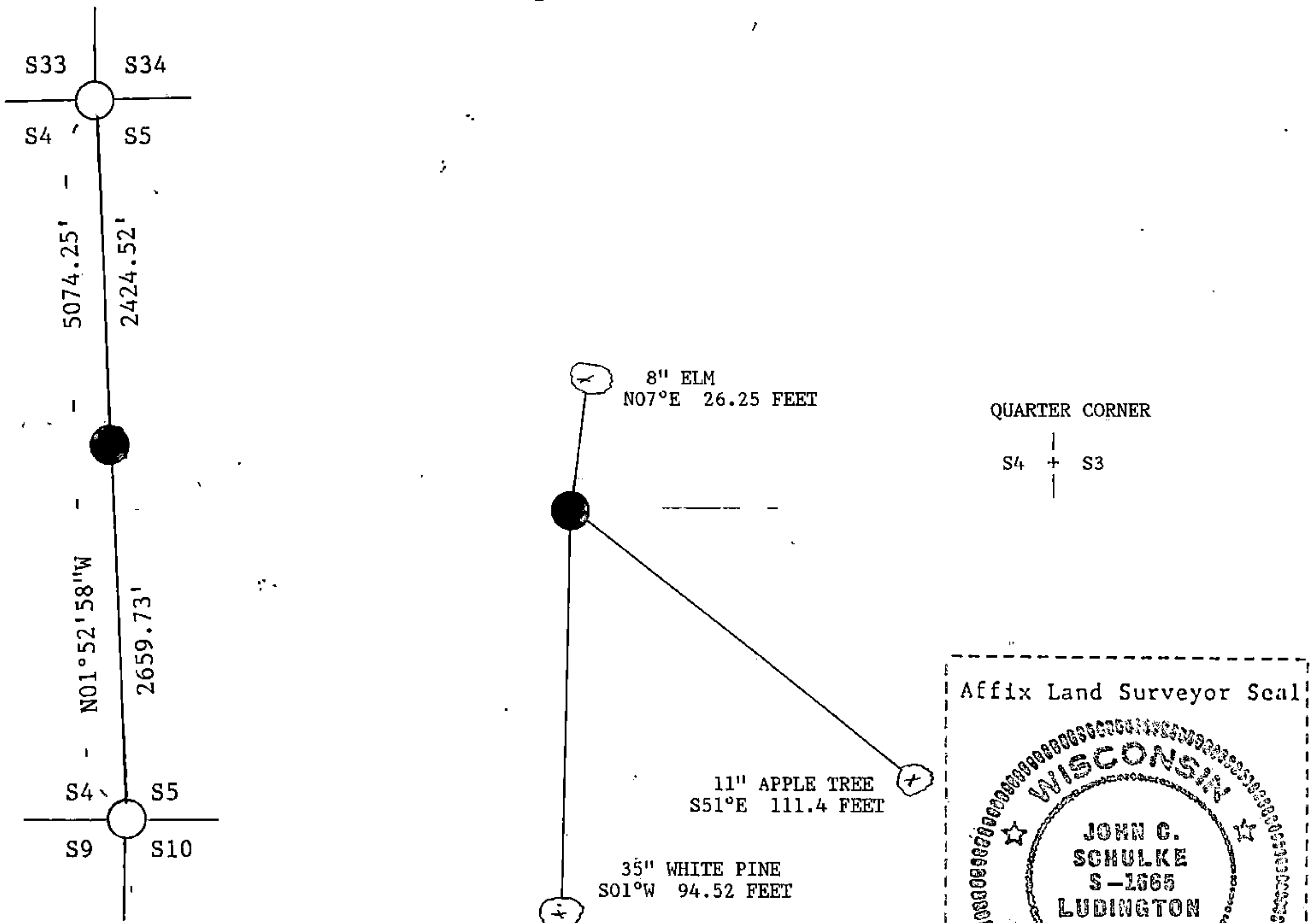
No discrepancy, first corner restoration.

(f) Was the corner restored through acceptance of (1) an obliterated evidence location, or, (2) a found perpetuated location?

See item g.

(g&h) Was the corner reestablished through lost corner proportionate methods? If so, show the method, including the directions and distances to other public land survey corners used as evidence or used for proportioning in determining the corner location?

The corner was reestablished through lost corner proportionate methods.



(i) I, John C. Schulke
(type or print name) certify that the corner location shown on this record was determined by me or under my direction and control and that this U.S. Public Land Survey Monument Record is correct and complete to the best of my knowledge and belief.

John C. Schulke January fifth, 1987
Signature Date

Certificate Ready for Filing: Dale S. Staeg 2/24/87
District Ranger Date