

CERTIFIED LAND CORNER RESTORATION

State of Wisconsin }
County of Forest } ss.

I William B. Cochrane, do hereby certify that on the 3rd day of October, 1974, I found evidence of the northeast section corner of Section 9 Township 37 North, Range 12 East, Fourth Principal Meridian, as described hereon; and that from this evidence I established a new monument and accessories as described hereon to perpetuate the original location of this corner:

Description of original monument and accessories and subsequent restorations:

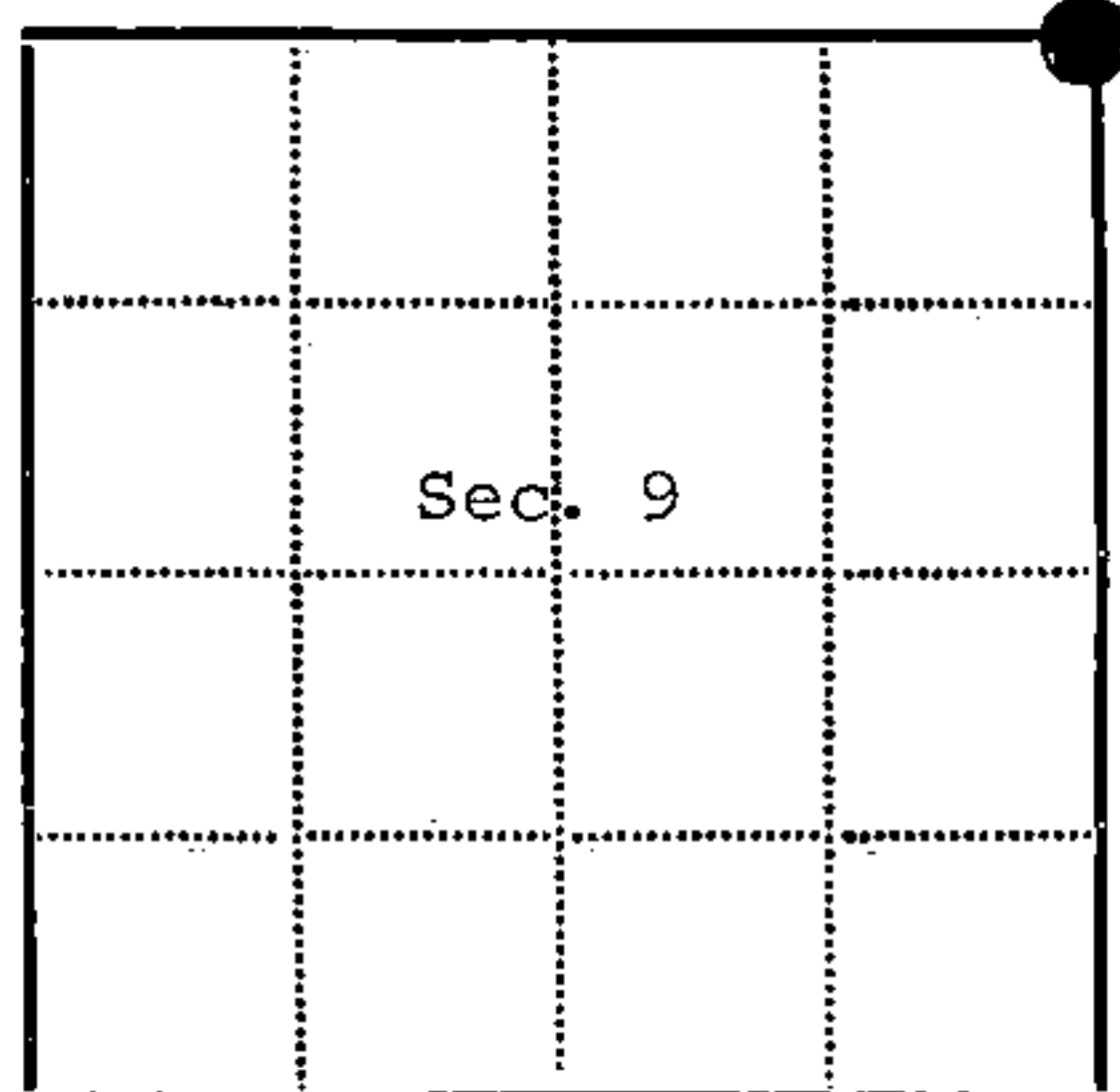
Surveyed in 1859 by William E. Daugherty
80 chains north between sections 9 and 10
Set wood post
Tamarack 10, S78W, 13 links
Birch 10, N53E, 20 links
East, 9 chains leave swamp, bears NE & SW
North, 1.60 chains leave swamp, bears E & W
West 28 chains leave swamp, bears N & S
South 26 chains leave swamp, bears NE & SW

Description of corner evidence found:

2 inch well point on the south edge of east-west blacktop road.
20 inches below the surface of the ground. Found top of old post alongside of well point, further digging recovered post.
No evidence of original bearing trees found.
Old fence runs south.

Description of monument and accessories I established to perpetuate the location of this corner:

Set 2 inch inside diameter galvanized iron pipe 5 feet long, filled with concrete, with brass cap marked: T37N, R12E, S4, S3, S9, S10, 1974, S-1107.
Blazed and scribed the following new bearing trees:
Spruce 4, S23E, 18.27 feet
White pine 7, S70°W, 49.00 feet
Centerline of road, north, 11.0 feet
Set steel sign post 0.5 feet south of post



● = Corner monument restored
□ =

Resident witnesses.....

Dated at Rhinelander Wisconsin, this 26th day of March 1975.

Signature William B. Cochrane Title Survey Technician
(County Surveyor, Registered Land Surveyor, or other duly authorized official)

Surveyors Registration No. S-1107 Document Number 106870

Office of Register of Deeds County of Forest

I hereby certify that the within instrument was filed in this office for record on the 31st day of March 1975, and was filed in Book No. Restorations Page No. E-13 of County Records.

Signature Eugene Staszynski Title Register of Deeds

Township 37 North, Range 12 East, Section 9, Index No. E-13, Page No.

4371204 0000

E 13

U.S. PUBLIC LAND SURVEY MONUMENT RECORD

Index No. E-13

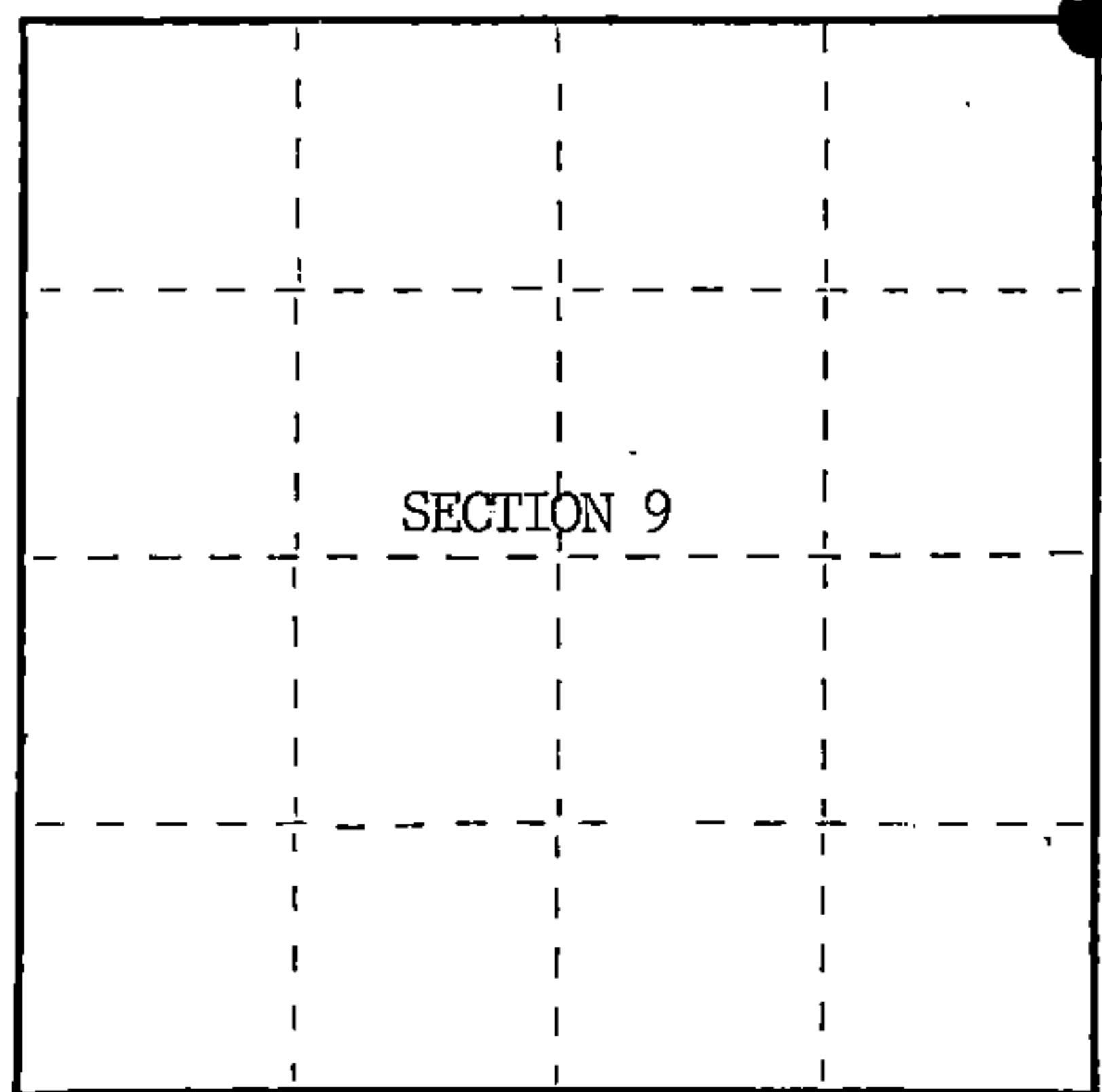
State of Wisconsin }
County of Forest } ss.

I, William B. Cochrane, do hereby certify that on the 30th day of June, 1986, I found evidence of the Northeast Section corner of Section 9 Township 37 North, Range 12 East, Fourth Principal Meridian, as described hereon; and that from this evidence I established a new monument and accessories as described hereon to perpetuate the original location of this corner.

Resident witnesses:

David Brownell

Russ Brown



○ = Corner monument restored.

History of original corner establishment:

Original Government Survey in 1859 by William E. Daugherty.

Corner restored on October 3rd, 1974, by William B. Cochrane, a Registered Land Surveyor with the U.S. Forest Service.

See Certified Land Corner Restoration Certificate filed in the Registrar of Deeds Office, in the Forest County Courthouse.

Description of corner evidence found:

Spruce(Snag)	5"	S23°E	18.27 feet (blazed, scribed, painted)
W. Pine(Tip-out)	8"	S70°W	49.00 feet (" " ")

According to other local surveyors the monument has been destroyed by construction of a new road. The new road level is approximately 3 feet above the old one. We did not dig to look for the damaged monument.

Description of monument and accessories I established to perpetuate the original location of this corner.

From bearing tree evidence, set a 2½ inch diameter aluminum pipe monument, 3 feet long, 4 feet in the ground(1 foot below the shoulder of the road), with an aluminum cap stamped; T37N, R12E, S3, S4, S9, S10, 1986, S-1107. From which the following new blazed and scribed bearing trees bear;

Spruce	13"	S83°E	134.42 feet
SW Corner of Cabin		N28°W	48.68 feet
Spruce	13"	North	32.07 feet
CL of Road		North	8.70 feet
Steel Sign Post		South	6.30 feet

Dated at Hiles, Wis., this 30th day of June, 1986.

Signature *William B. Cochrane* Title Land Surveyor Registration No. S-1107
(County Surveyor, Registered Land Surveyor, or other duly authorized official)

Office of Register of Deeds, County of Forest, I hereby certify that the within instrument was filed in this office for record on the 29th day of July, 1986 at 9:30 o'clock A.M.

Paul Aschenbrenner
(Register of Deeds)

By.....Deputy

FORM NO. 985-A

H.C. Miller Company

Stock No. 26273

DOCUMENT NUMBER 130686

REGISTER'S OFFICE
Forest County, Wis.
Received for record this 29th day of July A.D., 1986 at 9:30 o'clock A.M. and recorded in Vol. CORNER RESTORATIONS E-13
Paul Aschenbrenner
Register of Deeds

43712040000

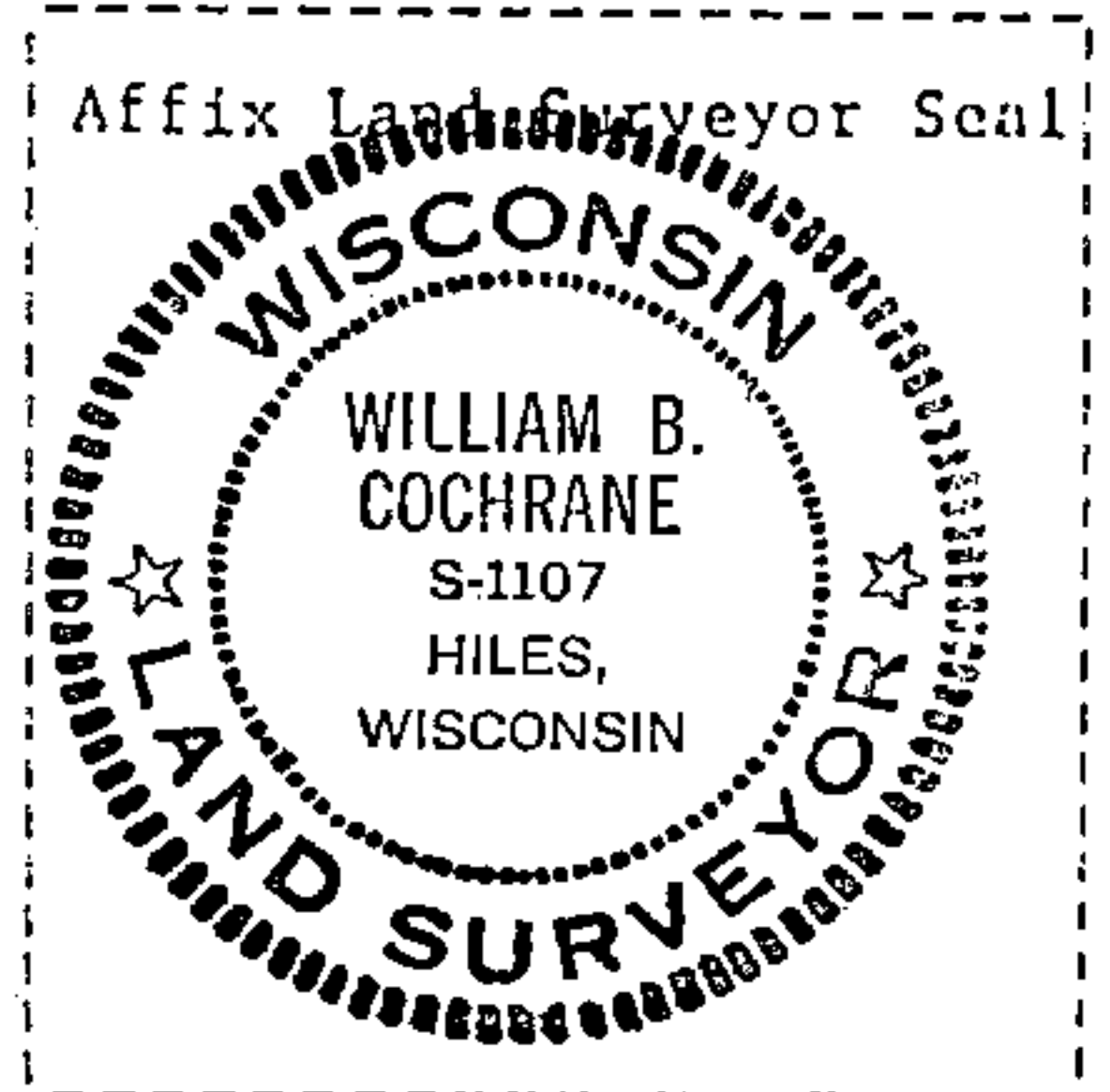
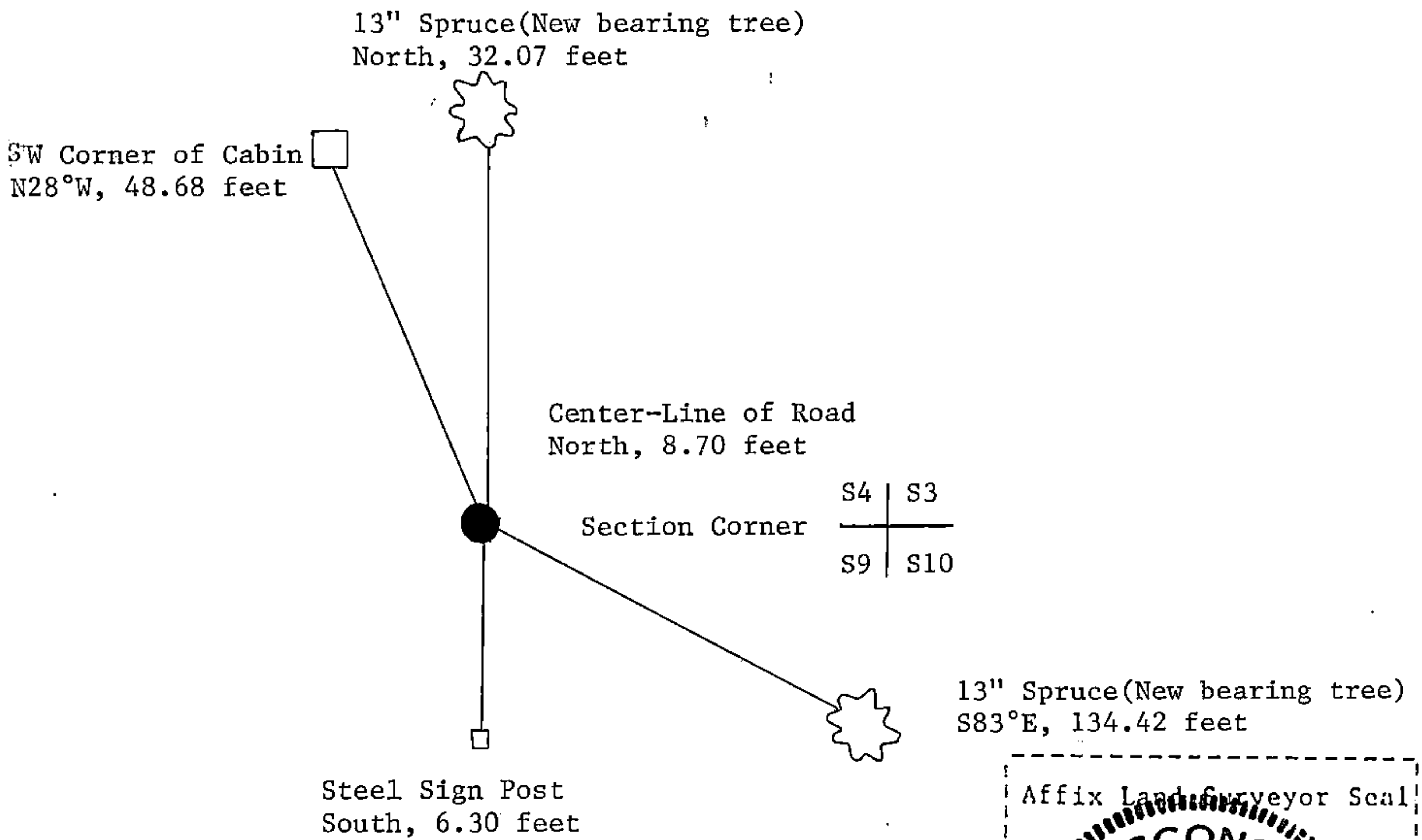
(e) Describe any material discrepancy between the location of the corner as restored or reestablished and the location of that corner as previously restored or reestablished by distance and direction. Show the discrepancy on the plan view drawing under (d), above. Show the distances between the corner as previously restored or reestablished and (1) the corner as restored or reestablished, and (2) to at least 2 of the witness monuments shown on the drawing in (d), above.

See drawing below.

(f) Was the corner restored through acceptance of (1) an obliterated evidence location, or, (2) a found perpetuated location?

Restored through acceptance of a found perpetuated location.

(g&h) Was the corner reestablished through lost corner proportionate methods? If so, show the method, including the directions and distances to other public land survey corners used as evidence or used for proportioning in determining the corner location?



(i) I, William B. Cochrane
 (type or print name) certify that the corner location shown on this record was determined by me or under my direction and control and that this U.S. Public Land Survey Monument Record is correct and complete to the best of my knowledge and belief.

William B. Cochrane July 8, 1986
 Signature Date