

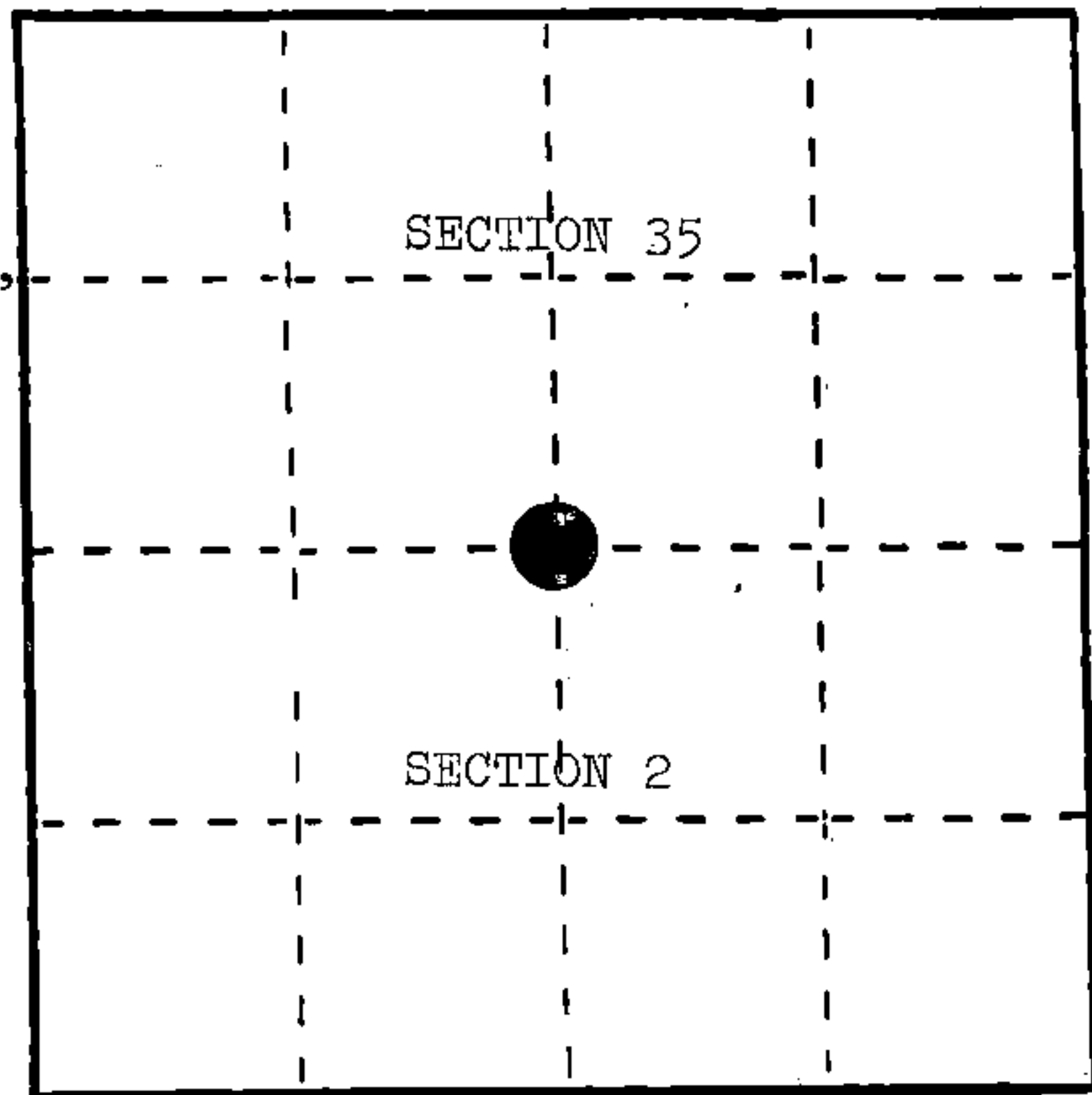
U. S. PUBLIC LAND SURVEY MONUMENT RECORD

INSTRUCTIONS: This record shall show the location of the corner and shall include all of the following nine elements (a through i).

- (a) Identify the corner by reference to the U.S. public land survey system.

○ = Corner monument restored.

Quarter corner to Sections 2 and 35, T.35-36N., R.16E., Fourth Principal Meridian, Forest County, Wisconsin.



- (b) Describe any record evidence, monument evidence, occupational evidence, testimonial evidence or any other material evidence you considered, and whether the monument was found or placed.

1857, Artemas Curtis set post at 40.00 chains with the following BTs: Sugar, 7", S.5°E., 28 links; Basswood, 18", N.4°W., 18 links.

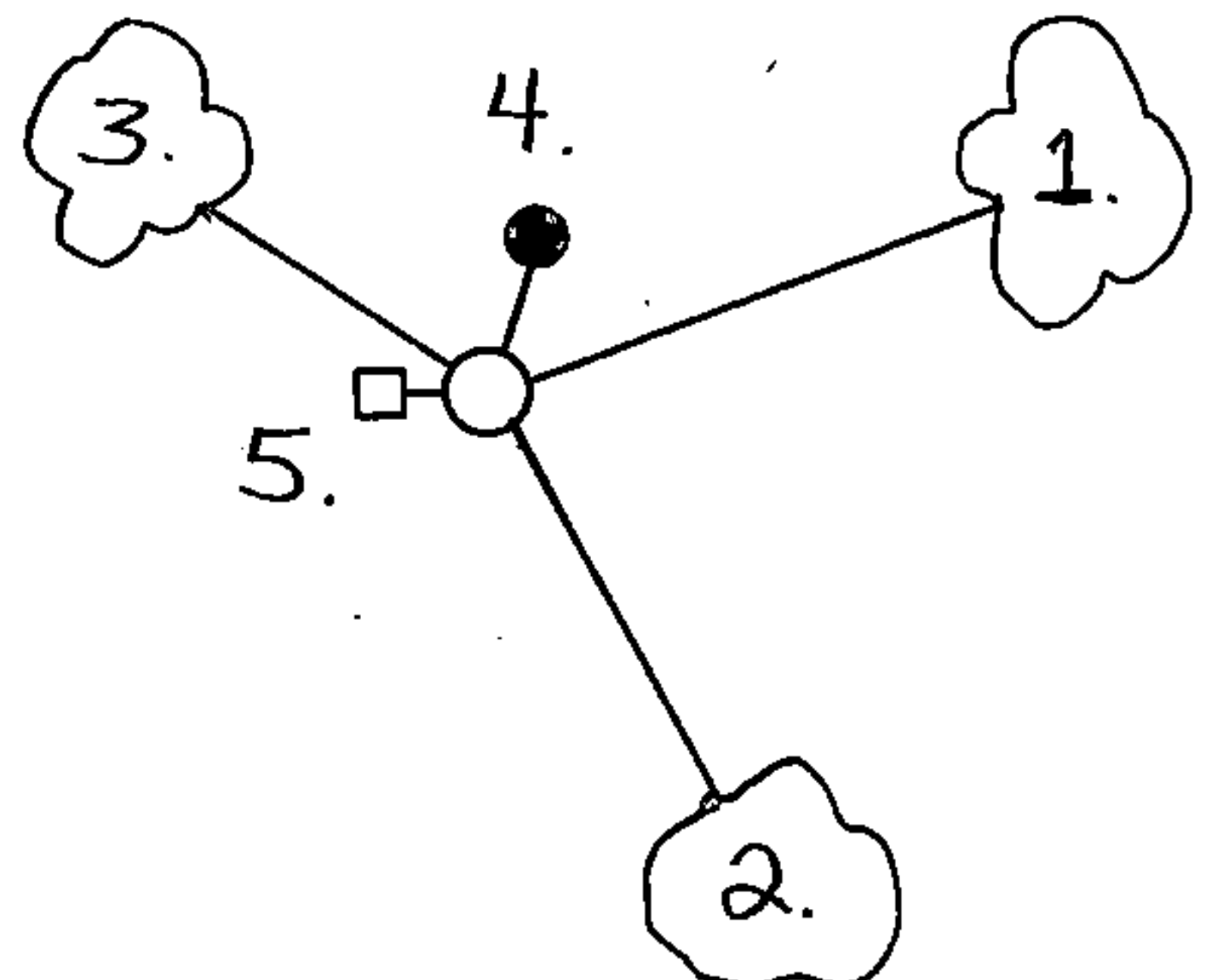
May 16, 1927, Goodman Lumber Company restored this corner by lost methods and set a 3" Popple post and a flue pipe in a mound of stone.

June, 1984, Milo Stefan found Goodman's flue pipe to be out of position by 11.44 feet, N.12°51'10"E., and set a 2" x 36" aluminum monument at the proper proportionate position.

- (c) In the plan view drawing below, provide reference ties to at least 4 witness monuments, or, if the location is within a municipality, to at least 2 witness monuments. (Witness monuments shall be made of concrete, natural stone, iron or other equally durable material.) Describe witness monuments.

- (d) Show a plan view drawing depicting the relevant monuments and reference ties which is sufficient in detail to enable accurate relocation of the corner monument if the corner monument is disturbed. Indicate north.

1. Sugar Maple, 10", N.77°E., 63.80 feet
2. Sugar Maple, 6", S.28°E., 47.30 feet
3. Sugar Maple, 6", N.68°W., 21.80 feet
4. Goodman's flue pipe, N.12°51'10"E., 11.44 feet
5. Steel Sign Post, 7', West, 1.5 feet



REGISTER'S OFFICE }
Forest County, Wis. }

Received for record this... day

of... A.D., 19... at

... o'clock... M. and

recorded in Vol. CORNER RESTORATIONS

on page 2-19
Paul Aschenbrenner
REGISTER

43616350020

- (e) Describe any material discrepancy between the location of the corner as restored or reestablished and the location of that corner as previously restored or reestablished by distance and direction. Show the discrepancy on the plan view drawing under (d), above. Show the distances between the corner as previously restored or reestablished and (1) the corner as restored or reestablished, and (2) to at least 2 of the witness monuments shown on the drawing in (d), above.

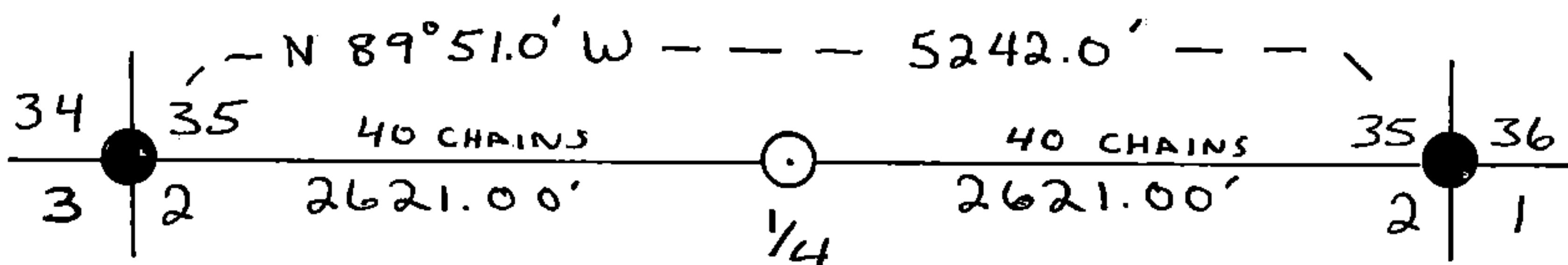
Goodman's flue pipe was to be set at single proportion position. It was found to be N.12°51'10"E., 11.44 feet from its proper position.

- (f) Was the corner restored through acceptance of (1) an obliterated evidence location, or, (2) a found perpetuated location?

Neither.

- (g&h) Was the corner reestablished through lost corner proportionate methods? If so, show the method, including the directions and distances to other public land survey corners used as evidence or used for proportioning in determining the corner location?

Single proportionate measure.



Affix Land Surveyor Seal



- (i) I, Milo E. Stefan
(type or print name) certify that the corner location shown on this record was determined by me or under my direction and control and that this U.S. Public Land Survey Monument Record is correct and complete to the best of my knowledge and belief.

Milo E. Stefan
Signature

2/14/85
Date