

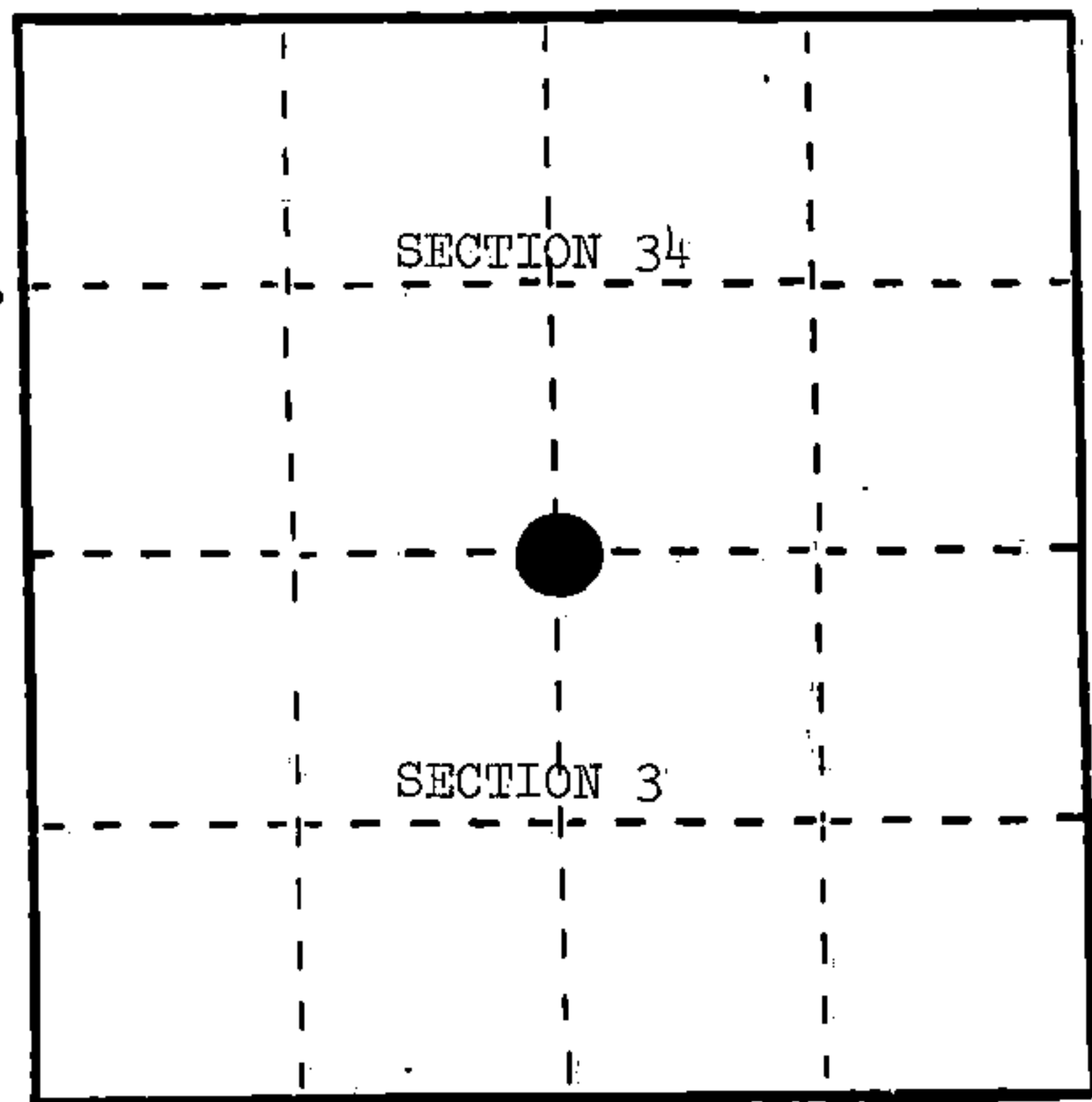
## U. S. PUBLIC LAND SURVEY MONUMENT RECORD

**INSTRUCTIONS:** This record shall show the location of the corner and shall include all of the following nine elements (a through i).

- (a) Identify the corner by reference to the U.S. public land survey system.

○ = Corner monument restored.

Quarter corner to Sections 3 and 34, T.35-36N., R.16E., Fourth Principal Meridian, Forest County, Wisconsin.



- (b) Describe any record evidence, monument evidence, occupational evidence, testimonial evidence or any other material evidence you considered, and whether the monument was found or placed.

1857, Artemas Curtis set quarter post at 40.00 chains with the following BTs: Fir, 8", S.51°E., 15 links, 9.90 feet; Hemlock, 7", N.74°W., 17 links, 11.22 feet.

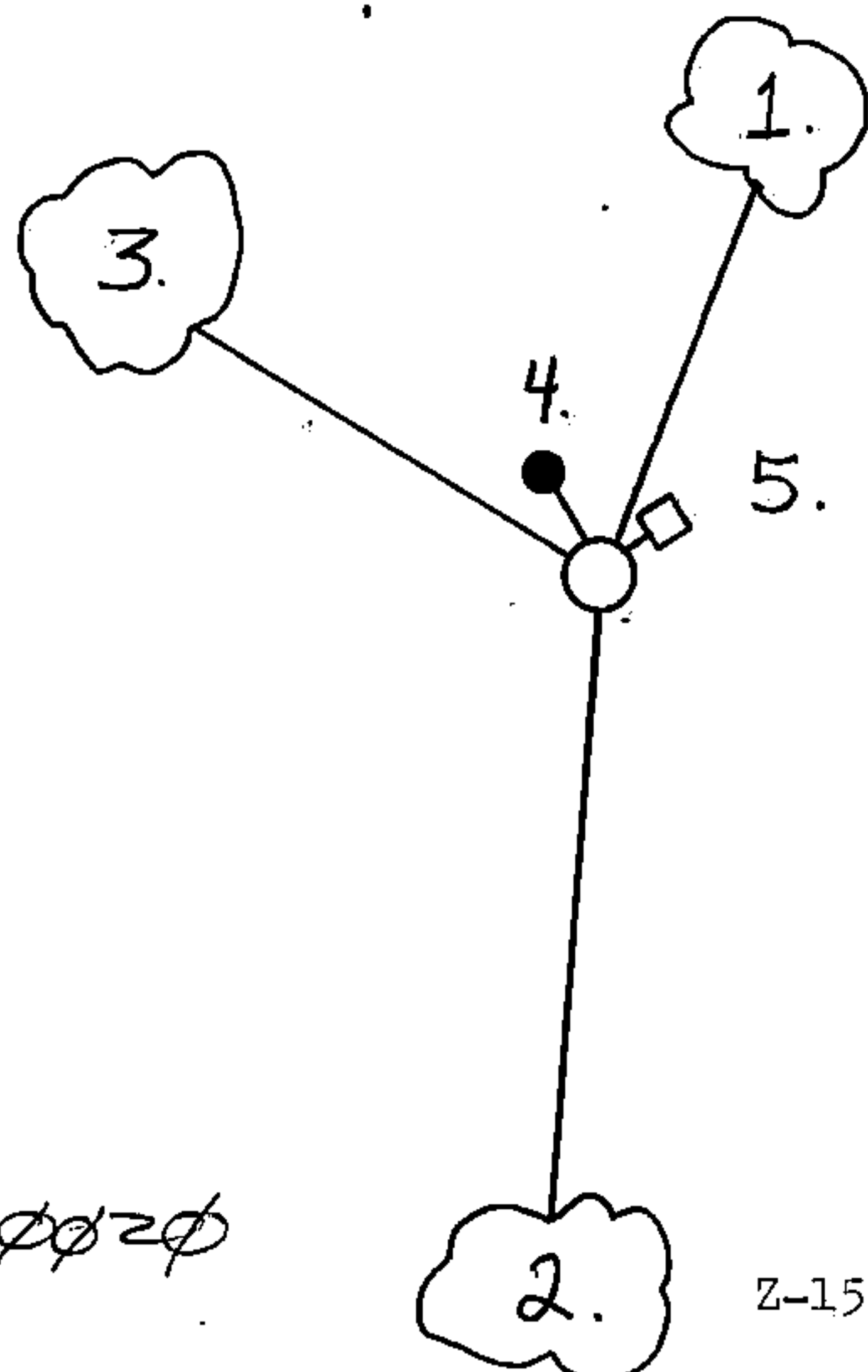
May, 1927, Goodman Lumber Company restored this corner by lost methods and set a 3½" Balsam post and a 2" x 18" flue pipe.

June, 1984, Milo Stefan found the 2" x 18" flue pipe to be 7.00 feet, N.38°49'15"W., out of single proportionate position and set a 2" x 36" aluminum monument at the proper location.

- (c) In the plan view drawing below, provide reference ties to at least 4 witness monuments, or, if the location is within a municipality, to at least 2 witness monuments. (Witness monuments shall be made of concrete, natural stone, iron or other equally durable material.) Describe witness monuments.

- (d) Show a plan view drawing depicting the relevant monuments and reference ties which is sufficient in detail to enable accurate relocation of the corner monument if the corner monument is disturbed. Indicate north.

1. Sugar Maple, 5", N.19°E., 22.79 feet
2. Sugar Maple, 10", S.06°W., 78.53 feet
3. Basswood, 9", N.51°W., 47.47 feet
4. 2" x 18" flue pipe, N.38°49'15"W., 7.00 feet
5. Steel Sign Post, 7', Northeast, 1.3 feet



REGISTER'S OFFICE }  
Forest County, Wis. }

Received for record this 1st day  
of April A.D., 1985 at

2:05 o'clock P.M. and  
recorded in Vol. CORNER RESTORATIONS

on page 2-15  
Paul A. Schenckner  
REGISTER

4361634 0020

- (e) Describe any material discrepancy between the location of the corner as restored or reestablished and the location of that corner as previously restored or reestablished by distance and direction. Show the discrepancy on the plan view drawing under (d), above. Show the distances between the corner as previously restored or reestablished and (1) the corner as restored or reestablished, and (2) to at least 2 of the witness monuments shown on the drawing in (d), above.

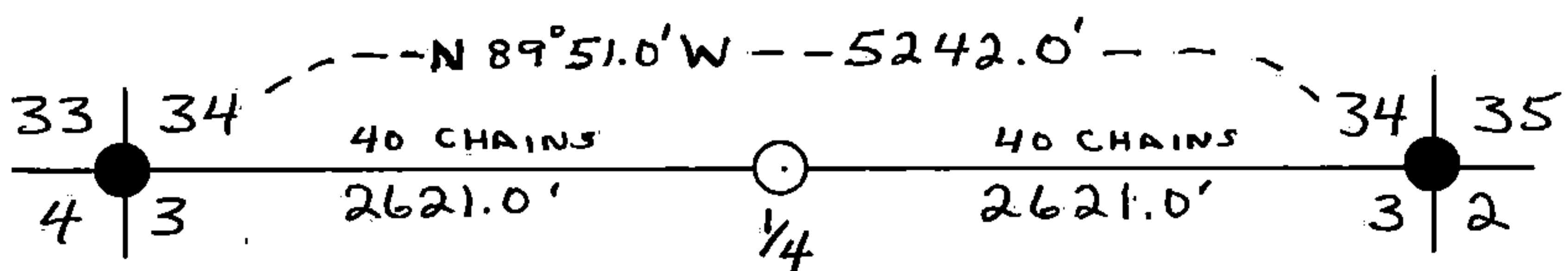
Goodman's flue pipe was to be set at single proportion position--it was found to be N.38°49'15"W., 7.00 feet out of its proper position.

- (f) Was the corner restored through acceptance of (1) an obliterated evidence location, or, (2) a found perpetuated location?

Neither.

- (g&h) Was the corner reestablished through lost corner proportionate methods? If so, show the method, including the directions and distances to other public land survey corners used as evidence or used for proportioning in determining the corner location?

Single proportionate measure.



Affix Land Surveyor Seal



- (i) I, Milo E. Stefan  
(type or print name) certify that the corner location shown on this record was determined by me or under my direction and control and that this U.S. Public Land Survey Monument Record is correct and complete to the best of my knowledge and belief.

Milo E. Stefan  
Signature

2/14/85  
Date