

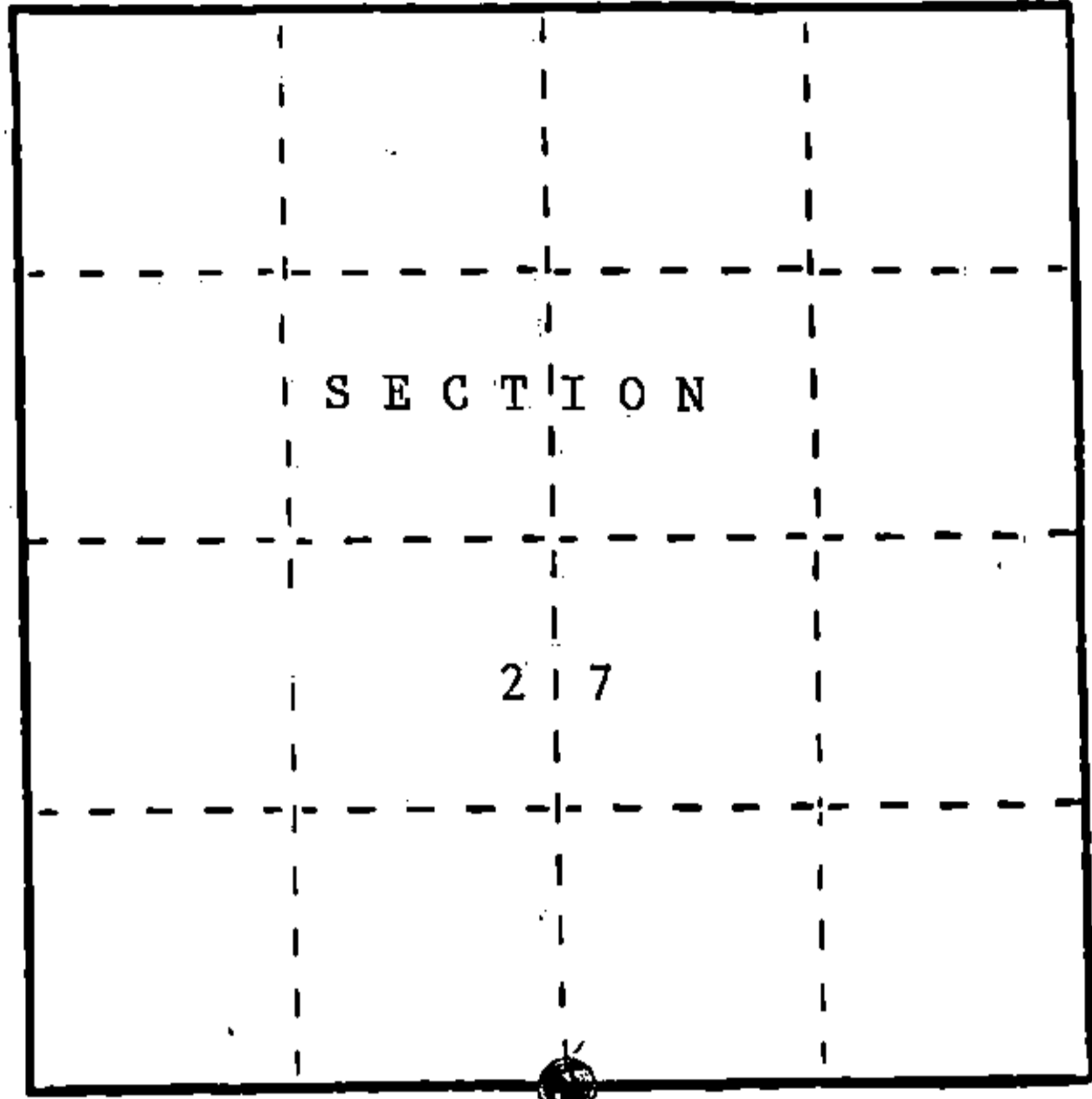
U. S. PUBLIC LAND SURVEY MONUMENT RECORD

INSTRUCTIONS: This record shall show the location of the corner and shall include all of the following nine elements (a through i).

(a) Identify the corner by reference to the U.S. public land survey system.

O = Corner monument restored.

Quarter Corner Common to Sections 27 and 34, T36N, R16E, Forest County, Wisconsin.



REGISTER'S OFFICE
Forest County, Wis.

Received for record this 9th day
of December A.D., 1988 at

2:50 o'clock P.M. and recorded
in Vol. CORNER RESTORATIONS

page V-15

Paul Aschenbrenner
Register of Deeds

(b) Describe any record evidence, monument evidence, occupational evidence, testimonial evidence or any other material evidence you considered, and whether the monument was found or placed.

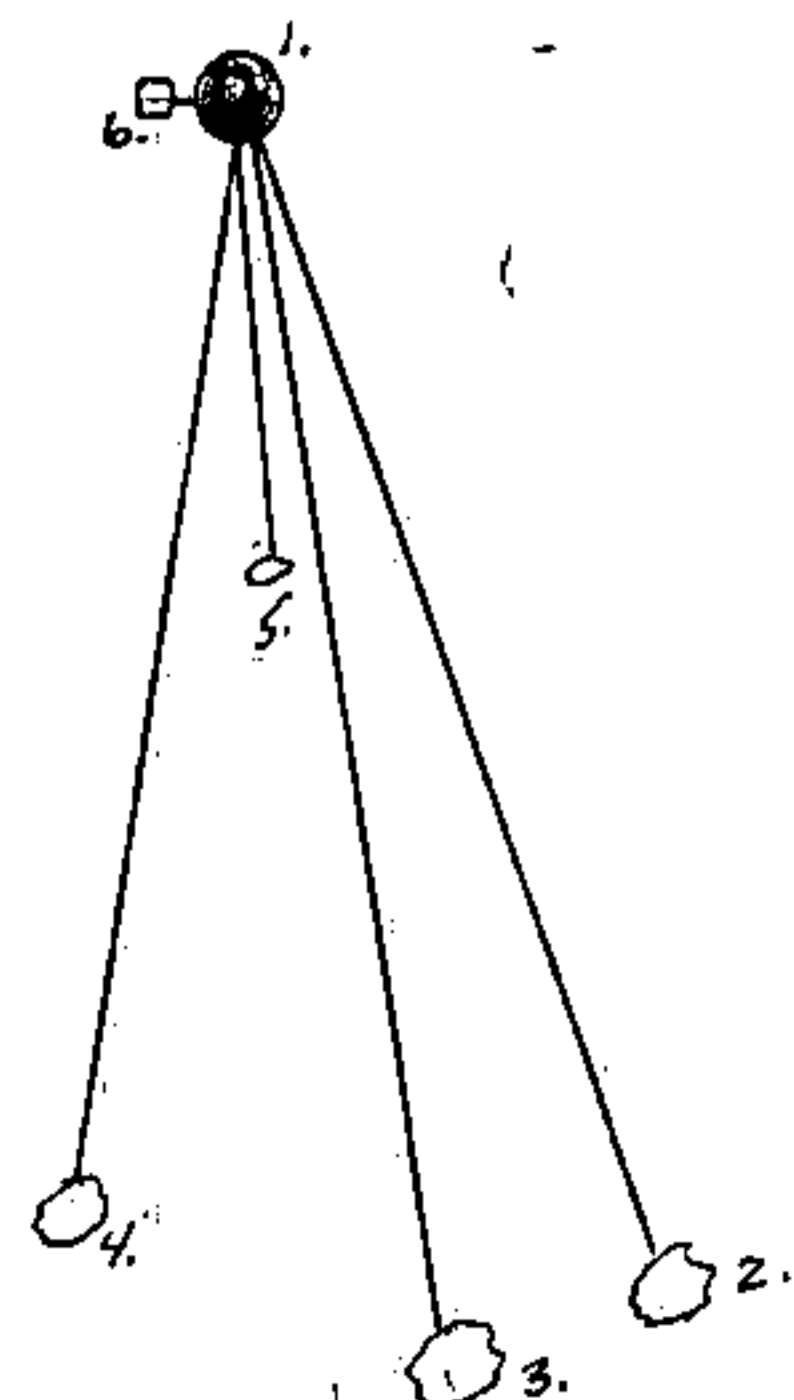
In 1858, James McBride set a wood post for the corner and the following corner references:
Fir 8" S05°W 11 lks. Fir 6" N04°W 28 lks.

In 1988, John Schulke found no evidence due to timber cutting in the area.
Placed 2 1/2" X 36" aluminum monument.

(c) In the plan view drawing below, provide reference ties to at least 4 witness monuments, or, if the location is within a municipality, to at least 2 witness monuments. (Witness monuments shall be made of concrete, natural stone, iron or other equally durable material.)
Describe witness monuments.

(d) Show a plan view drawing depicting the relevant monuments and reference ties which is sufficient in detail to enable accurate relocation of the corner monument if the corner monument is disturbed. Indicate north.

1. 2 1/2" dia. X 36" aluminum magnetic cap monument stamped to identify the corner.
2. Sugar Maple 7" S20°E 118.42 feet
3. Sugar Maple 5" S10°E 119.49 feet
4. Basswood 6" S08°W 105.98 feet
5. Chiseled an "X" on rock 7'X5 1/2' S05°E 45.45 feet
6. Steel sign post West 1.0 feet



43616270020

(e) Describe any material discrepancy between the location of the corner as restored or reestablished and the location of that corner as previously restored or reestablished by distance and direction. Show the discrepancy on the plan view drawing under (d), above. Show the distances between the corner as previously restored or reestablished and (1) the corner as restored or reestablished, and (2) to at least 2 of the witness monuments shown on the drawing in (d), above.

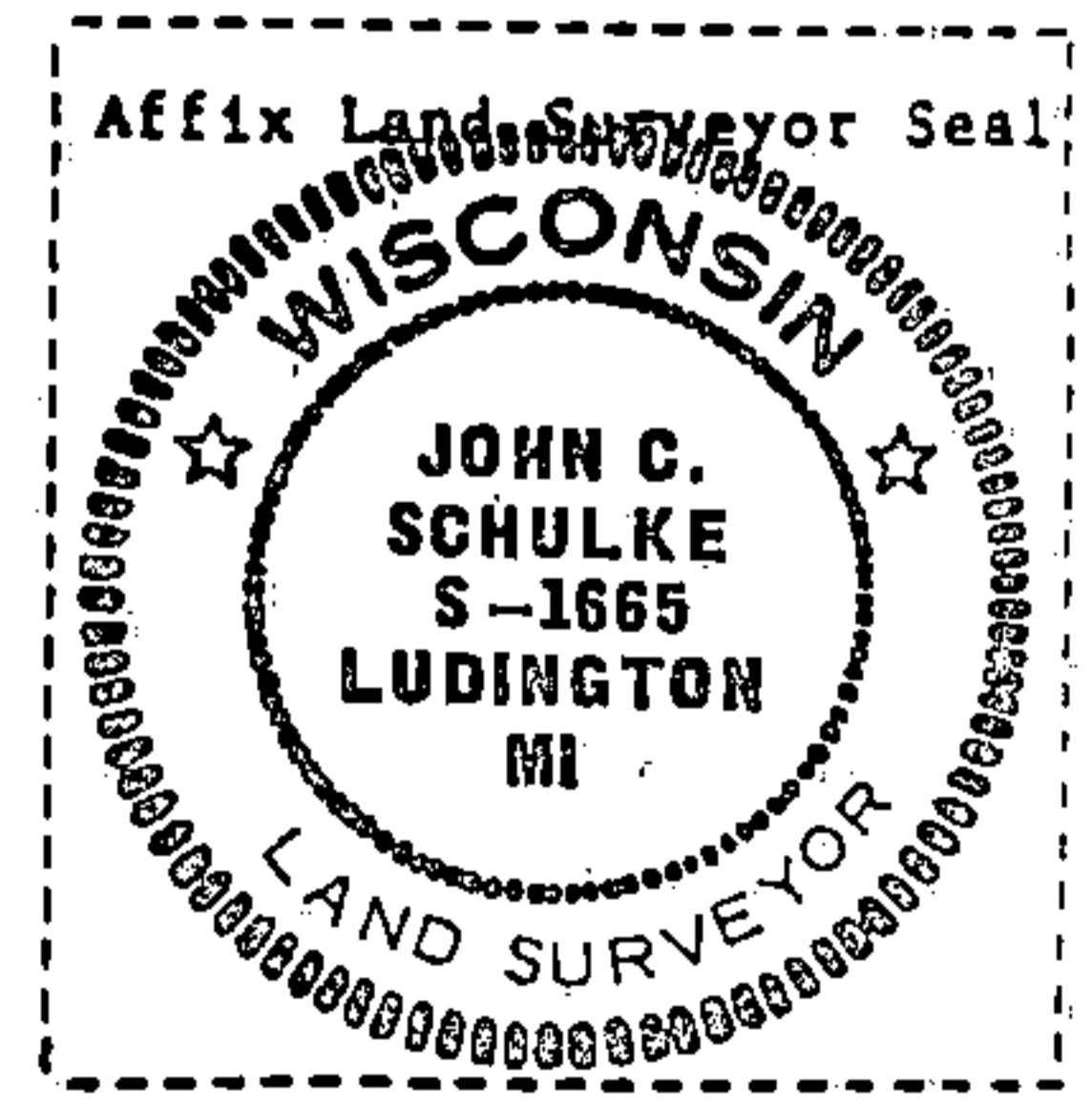
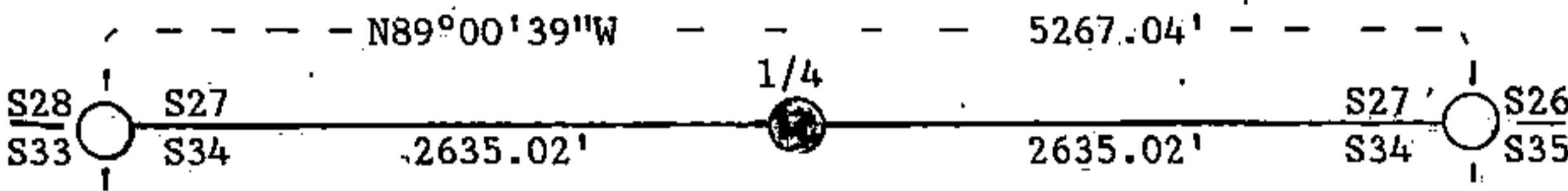
No discrepancy, first corner restoration.

(f) Was the corner restored through acceptance of (1) an obliterated evidence location, or, (2) a found perpetuated location?

No, see g and h.

(g&h) Was the corner reestablished through lost corner proportionate methods? If so, show the method, including the directions and distances to other public land survey corners used as evidence or used for proportioning in determining the corner location?

Corner restored by proportionate method.



(*) I, John Schulke
 (Type or print name) certify that the corner location shown on this record was determined by me or under my direction and control and that this U.S. Public Land Survey Monument Record is correct and complete to the best of my knowledge and belief.

John Schulke Signature Date 12/2/88

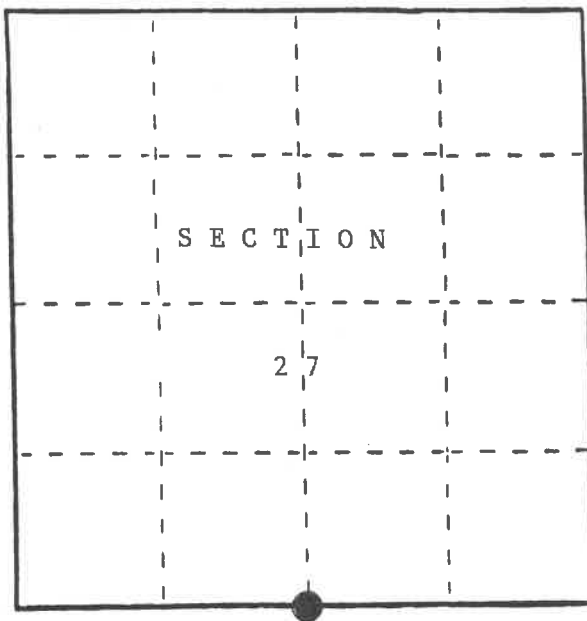
Certificate ready for filing: Dale S. Staeg
 District Ranger

U. S. PUBLIC LAND SURVEY MONUMENT RECORD

INSTRUCTIONS: This record shall show the location of the corner and shall include all of the following nine elements (a through i).

- (a) Identify the corner by reference to the U.S. public land survey system.
- = Corner monument restored.

Quarter Corner Common to Sections 27 and 34, T36N, R16E, Forest County, Wisconsin.



REGISTER'S OFFICE

Forest County, WI

Received for record this 21st day

of February A.D., 1989

at 10:10 o'clock A.M. and

recorded in Vol. CORNER RESTORATION

Paul Achenbacher
REGISTER

- (b) Describe any record evidence, monument evidence, occupational evidence, testimonial evidence or any other material evidence you considered, and whether the monument was found or placed.

In 1858, James McBride set a wood post for the corner and the following corner references: Fir 8" S05°W 11 lks. Fir 6" N04°W 28 lks.

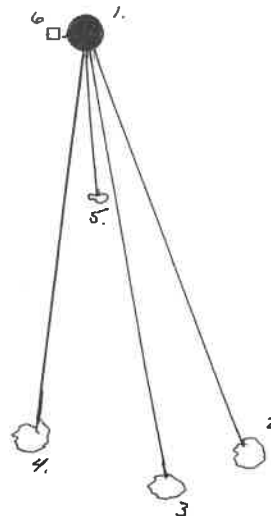
In 1988, John Schulke found no evidence due to timber cutting in the area. Placed 2 1/2" X 36" aluminum monument.

This certificate is filed to correct a distance error on the certificate filed as Document #136622.

- (c) In the plan view drawing below, provide reference ties to at least 4 witness monuments, or, if the location is within a municipality, to at least 2 witness monuments. (Witness monuments shall be made of concrete, natural stone, iron or other equally durable material.) Describe witness monuments.

- (d) Show a plan view drawing depicting the relevant monuments and reference ties which is sufficient in detail to enable accurate relocation of the corner monument if the corner monument is disturbed. Indicate north.

1. 2 1/2" dia. X 36" aluminum magnetic cap monument stamped to identify the corner.
2. Sugar Maple 7" S20°E 118.42 feet
3. Sugar Maple 5" S10°E 119.49 feet
4. Basswood 6" S08°W 105.98 feet
5. Chiseled an "X" on rock 7'X5 1/2' S05°E 45.45 feet
6. Steel sign post West 1.0 feet



43616270020

(e) Describe any material discrepancy between the location of the corner as restored or reestablished and the location of that corner as previously restored or reestablished by distance and direction. Show the discrepancy on the plan view drawing under (d), above. Show the distances between the corner as previously restored or reestablished and (1) the corner as restored or reestablished, and (2) to at least 2 of the witness monuments shown on the drawing in (d), above.

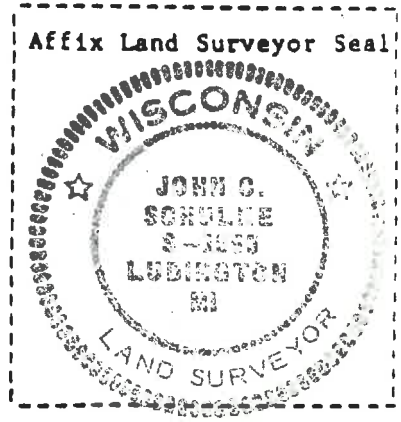
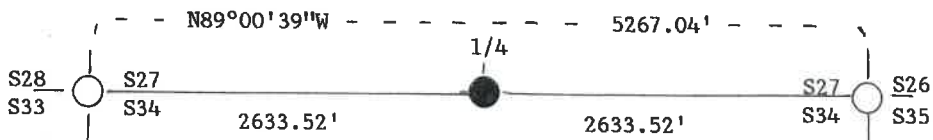
No Discrepancy, first corner restoration.

(f) Was the corner restored through acceptance of (1) an obliterated evidence location, or, (2) a found perpetuated location?

No, see g and h.

(g&h) Was the corner reestablished through lost corner proportionate methods? If so, show the method, including the directions and distances to other public land survey corners used as evidence or used for proportioning in determining the corner location?

Corner restored by proportionate method.



(i) I, John C. Schulke
(Type or print name) certify that the corner location shown on this record was determined by me or under my direction and control and that this U.S. Public Land Survey Monument Record is correct and complete to the best of my knowledge and belief.

John C. Schulke Jan 27, 1989
Signature Date

Certificate ready for filing:

Darrell E. Richards
Asst. District Ranger