

U.S. PUBLIC LAND SURVEY MONUMENT RECORD

Index No. P-25

State of Wisconsin }  
County of Forest } ss.

I, Gary L. Pisoni, do hereby certify that on the 30th day of March, 1994, I found evidence of the East quarter corner of Section 24 Township 36, North, Range 16-17 East, Fourth Principal Meridian, as described hereon; and that from this evidence I established a new monument and accessories as described hereon to perpetuate the original location of this corner.

Resident witnesses:

History of original corner establishment:

Original Government Survey in 1857 by Artemas Curtis. North between Sections 24 and 19 at 40.00 chains, set Quarter Section post from which the following bear: Elm, 15", S 40°W, 31 lks; Sugar, 12", N 28°E, 28 lks.

In 1936 and 1937, Marinette County surveyors, F.P. Gould and B.F. Hammes set the Quarter corner on line and by single proportionate measurement between the Northeast and Southeast Section corners of Section 24. They set a 4" dia. iron post in concrete with a Marinette County brass cap.

Description of corner evidence found:

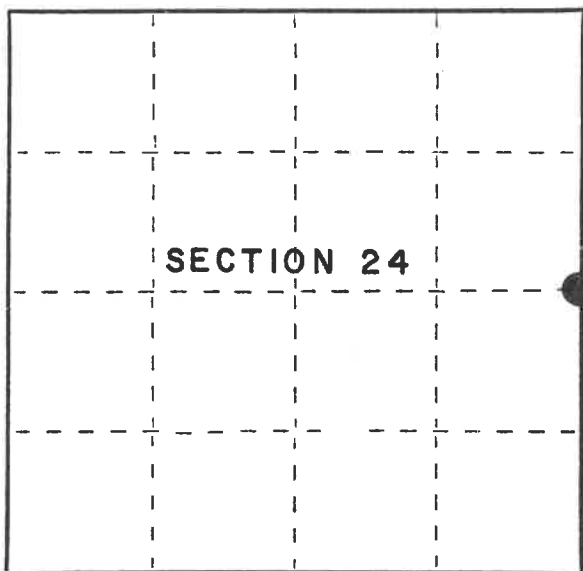
Found the monument as described above and accessories set by unknown persons:

Iron bar	1"	S 41°E	7.64 feet
Iron bar	1"	S 33°W	7.57 feet
Iron bar	1"	N 38°W.	24.50 feet

Description of monument and accessories I established to perpetuate the original location of this corner.

Blazed and scribed the following new bearing trees: (Measurements taken to nail in side of tree)

Basswood	7"	N 56°E	11.65 feet
Sugar Maple	16"	S 45°E	9.64 feet
Sugar Maple	5"	S 30°W	9.76 feet
Sugar Maple	13"	N 36°W	25.90 feet
Steel sign post		N 03°E	2.7 feet



● = Corner monument restored.

Dated at Iron River, MI, this 26th day of May, 1995

Signature: Gary L. Pisoni Title: Land Surveyor Registration No. S-1634  
(County Surveyor, Registered Land Surveyor, or other duly authorized official)

Office of Register of Deeds, County of Forest, I hereby certify that the within instrument was filed in this office for record on the 20th day of March, 1997 at 1:30 o'clock P.M.

(Register of Deeds)

By: Gal Tombering Deputy

FORM NO. 985-A



Stock No. 26273

158121

43016242000

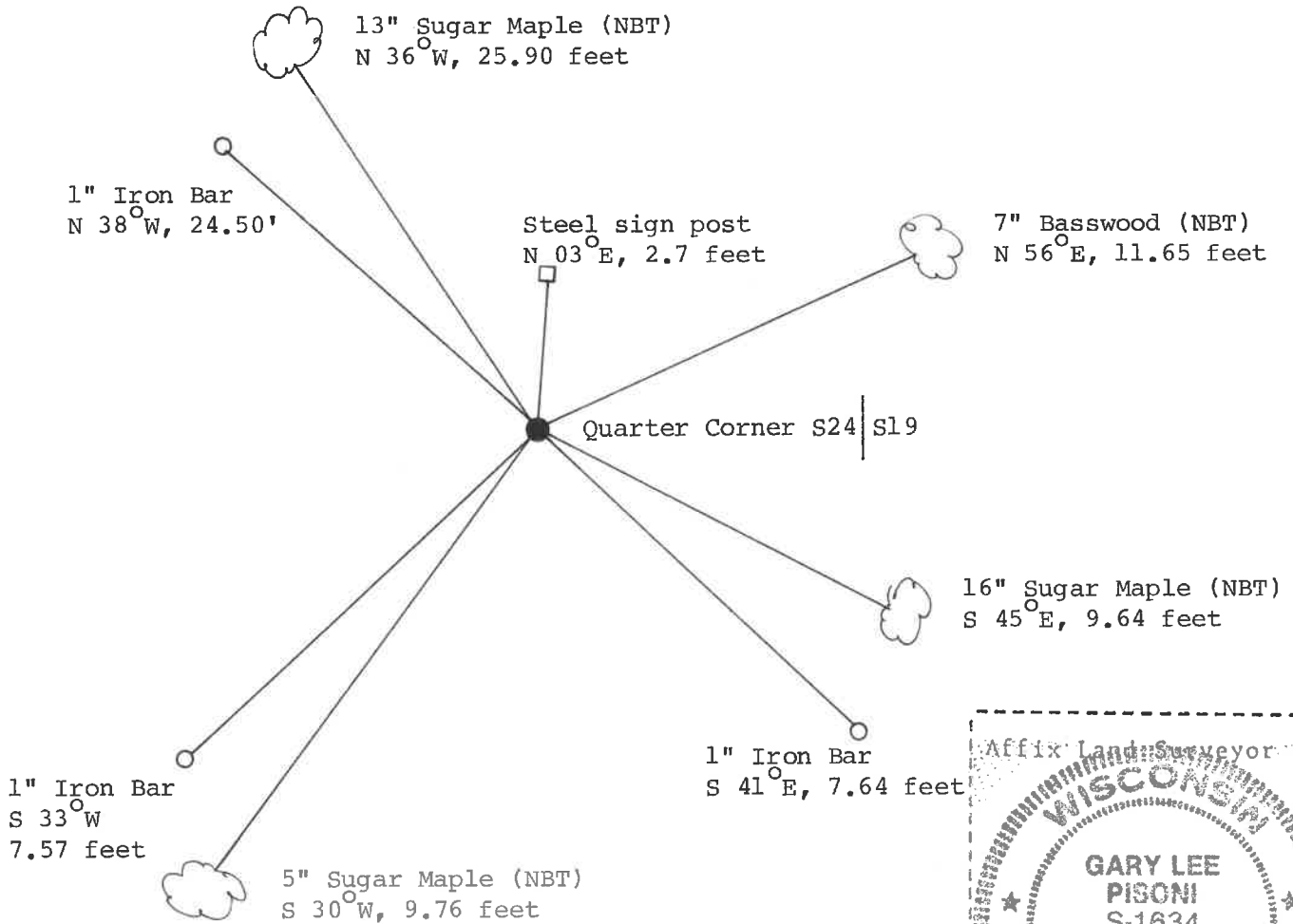
(e) Describe any material discrepancy between the location of the corner as restored or reestablished and the location of that corner as previously restored or reestablished by distance and direction. Show the discrepancy on the plan view drawing under (d), above. Show the distances between the corner as previously restored or reestablished and (1) the corner as restored or reestablished, and (2) to at least 2 of the witness monuments shown on the drawing in (d), above.

None

(f) Was the corner restored through acceptance of (1) an obliterated evidence location, or, (2) a found perpetuated location?

Restored through acceptance of a found perpetuated location.

(g&h) Was the corner reestablished through lost corner proportionate methods? If so, show the method, including the directions and distances to other public land survey corners used as evidence or used for proportioning in determining the corner location?



(i) I, Gary L. Pisoni  
 (type or print name) certify that the corner location shown on this record was determined by me or under my direction and control and that this U.S. Public Land Survey Monument Record is correct and complete to the best of my knowledge and belief.

Gary L. Pisoni Signature 10-2-95 Date