

U. S. PUBLIC LAND SURVEY MONUMENT RECORD

INSTRUCTIONS:

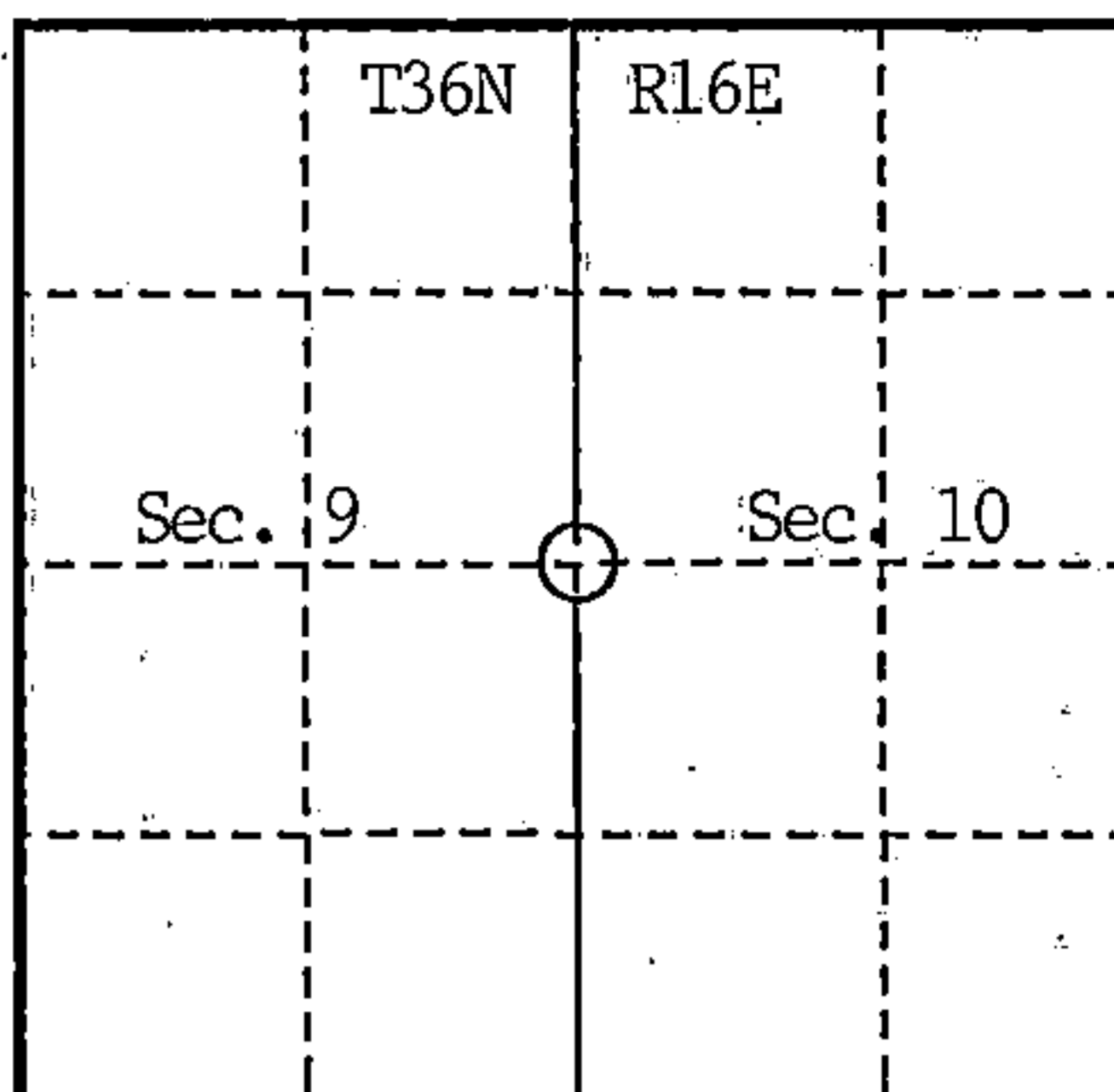
This record shall show the location of the corner and shall include all of the following nine elements (a through i).

- (a) Identify the corner by reference to the U.S. public land survey system.
 O = Corner monument restored.

Quarter Corner common to Sections 9 and 10,
 T36N-R16E

Index Number G-13 (T36N-R16E)

Forest County, Wisconsin



- (b) Describe any record evidence, monument evidence, occupational evidence, testimonial evidence or any other material evidence you considered, and whether the monument was found or placed.

1858 - Original post set by James McBride, witnessed by 12 Spruce N74E 20 lks.;
 12 Cedar N64W 10 lks.

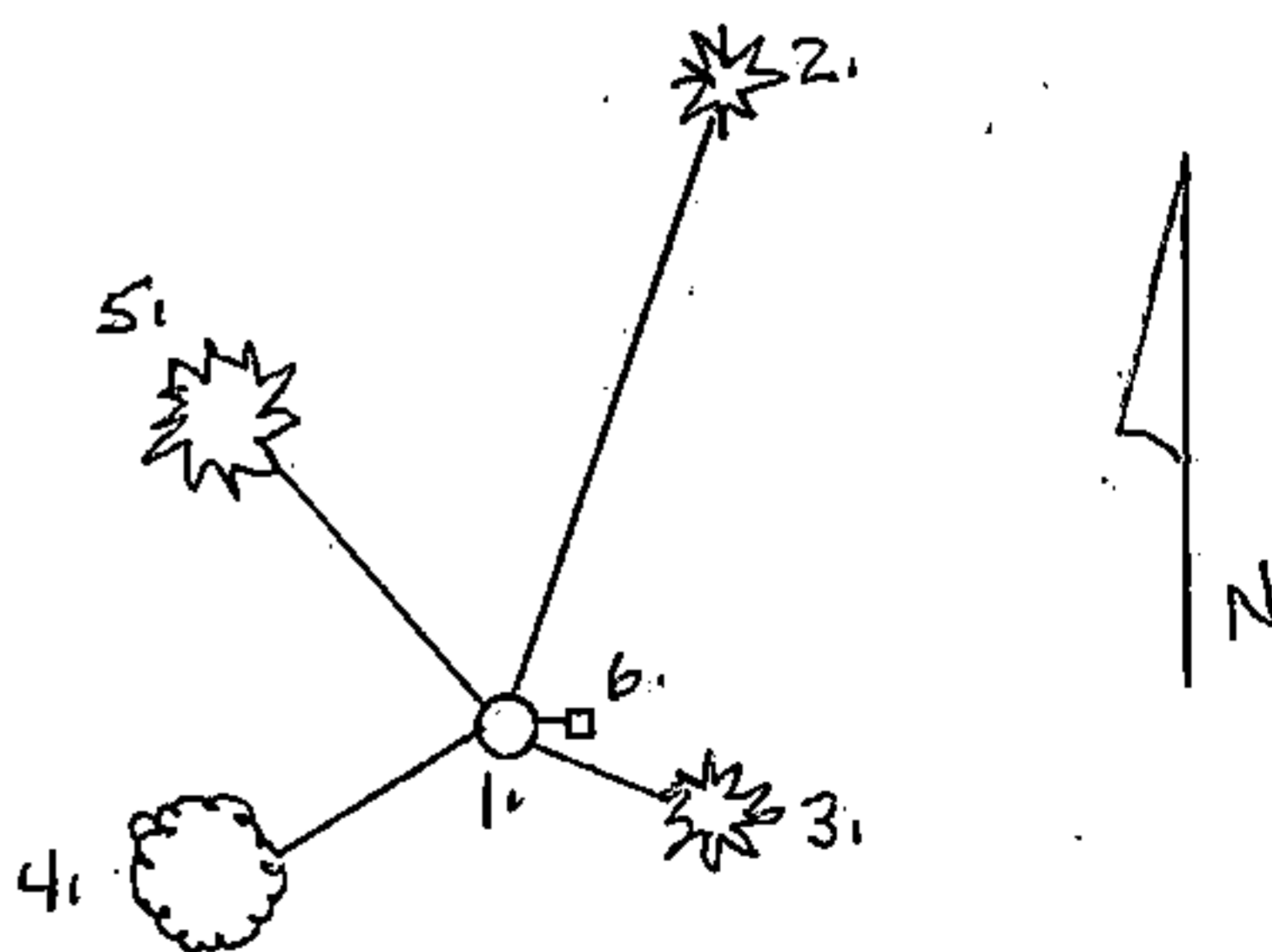
Found no record of subsequent corner recovery or restoration.

1991 - Coleman Engineering Co. established a survey traverse between the NW and SW July corners of Section 10 to locate the area of corner search at the midpoint of the straight line between section corners. A thorough search was made and no identifiable remains of the original monument or BTs were found. No evidence of prior lines or occupations was apparent. Corner was considered to be lost and to be restored by proportionate method.

- (c) In the plan view drawing below, provide reference ties to at least 4 witness monuments, or, if the location is within a municipality, to at least 2 witness monuments. (witness monuments shall be made of concrete, natural stone, iron or other equally durable material.)

- (d) Show a plan view drawing depicting the relevant monuments and reference ties which is sufficient in detail to enable accurate relocation of the corner monument if the corner monument is disturbed. Indicate north.

- 2 1/2" x 36" Aluminum monument with position stamped on cap.
- Cedar 12" N18°E 46.33 feet.
- Hemlock 14" S63°E 6.66 feet.
- Y. Birch 16" S47°W 15.75 feet.
- Hemlock 12" N42°W 16.68 feet.
- Steel sign post East 1.26 feet.



REGISTER'S OFFICE
 Forest County, Wis.

Received for record this 8th day
 of October A.D., 1997 at
2:00 o'clock P. M. and recorded
 in Vol. Corner Restorations
 page G-13

Paul Aschenbrenner
 Register of Deeds

43616092000

(e) Describe any material discrepancy between the location of the corner as restored or reestablished and the location of that corner as previously restored or reestablished by distance and direction. Show the discrepancy on the plan view drawing under (d), above. Show the distances between the corner as previously restored or reestablished and (1) the corner as restored or reestablished, and (2) to at least 2 of the witness monuments shown on the drawing in (d), above.

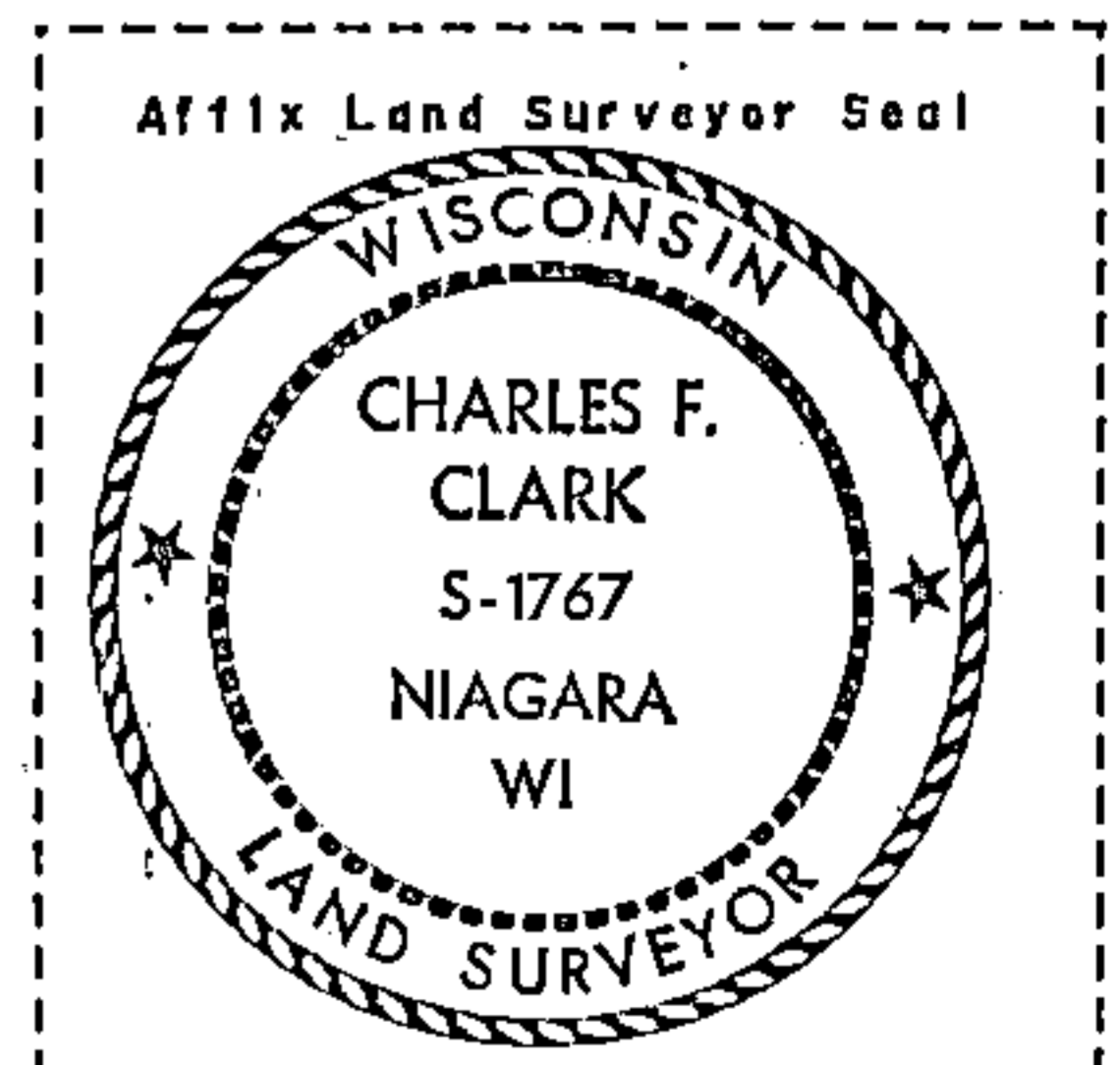
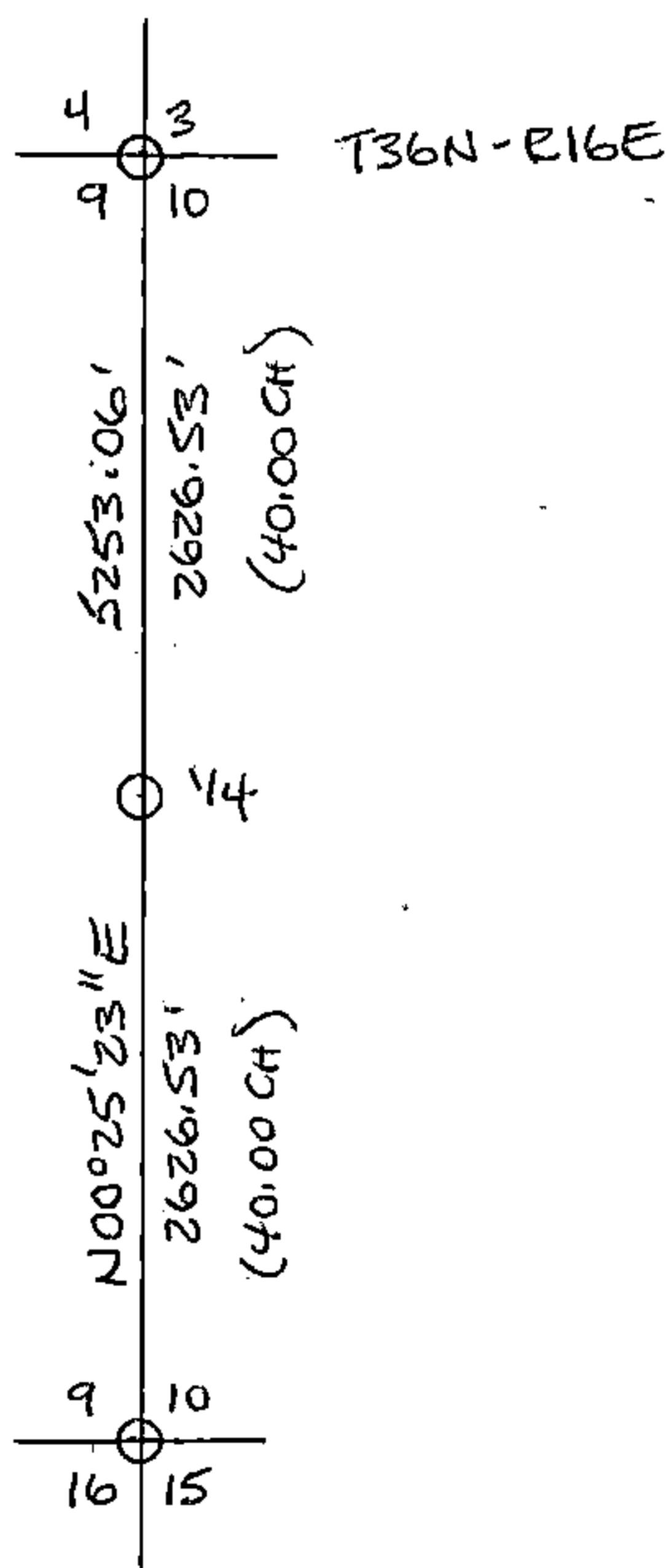
Found no evidence of prior corner recovery or restoration.

(f) Was the corner restored through acceptance of (1) an obliterated evidence location, or, (2) a found perpetuated location?

Neither.

(g & h) Was the corner reestablished through lost corner proportionate methods? If so, show the method, including the directions and distances to other public land survey corners used as evidence or used for proportioning in determining the corner location?

Corner was restored at the midpoint of a straight line between the Northwest and Southwest corners of Section 10, T36N-R16E.



(1) I, Charles F. Clark, RLS 1767
COLEMAN ENGINEERING COMPANY

(type or print name) certify that the corner location shown on this record was determined by me or under my direction and control and that this U.S. Public Land Survey Monument Record is correct and complete to the best of my knowledge and belief.

Charles F. Clark
Signature

August 23, 1991
Date

CERTIFICATE READY FOR FILING:

Darrell E. Richards
Acting District Ranger