

Document Number

195866 U.S. PUBLIC LAND SURVEY MONUMENT RECORD

(As Required By s. A-E 7.08, WI Adm. Code)

REGISTER'S OFFICE
Forest County, WI

Received for record this 7th day
of November A.D. 2007
at 9:00 o'clock A.M. and
recorded in Vol. Corner Restorati
on page E-11 of records

Kay Swanson
Deputy REGISTER

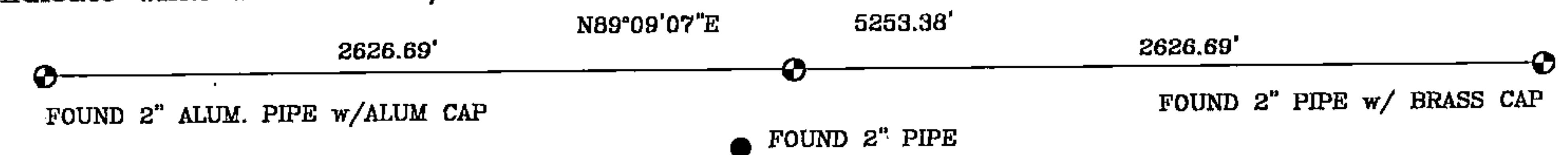
History of original corner establishment and subsequent restorations and description of any record, monument, occupational, testimonial or other evidence considered:

2006 JEFFREY M. LIEUWEN FOUND 2" PIPE SLEEPING IN NEWLY "CUT OFF" AND BUILT, DOZED AREA. I RESET THIS PIPE WHERE BELIEVED IT HAD BEEN. I FOUND POSITION TO BE TO FAR NORTH. AFTER ADDITIONAL SEARCH OF AREA, I SET A 2" x 18" PIPE HALF WAY ON LINE BETWEEN FOUND SOUTHEAST AND SOUTHWEST SECTION CORNERS

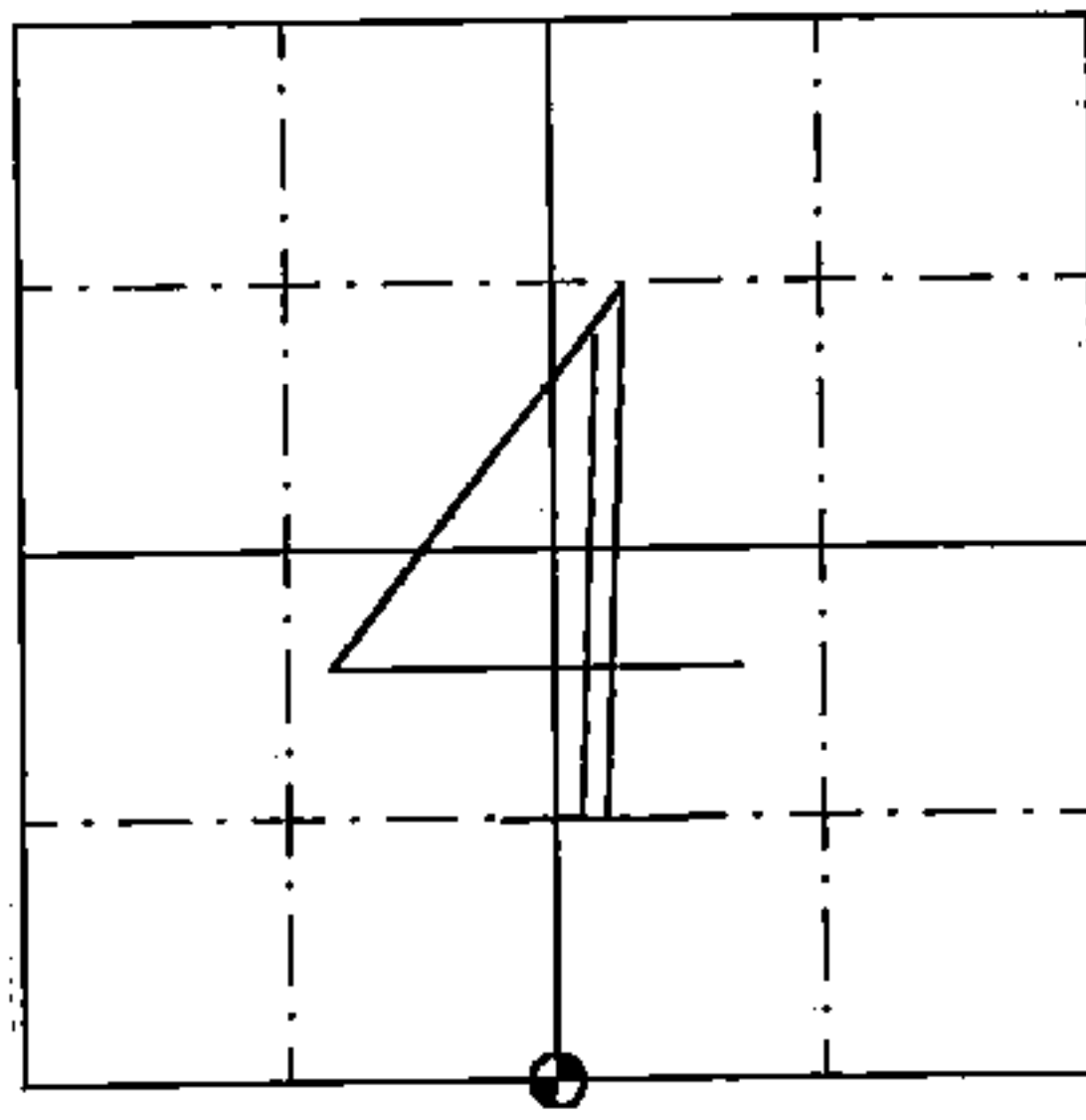
Corner was: (Check All That Apply)

- Restored through acceptance of an obliterated evidence location
- Restored through acceptance of a found perpetuated location
- Considered a lost corner and reestablished through lost corner proportionate methods(include a plan view drawing showing distances and directions to other Public Land Survey Corner used for proportioning and determining the corner location)
- Restored or reestablished in a location that differs from a previous restoration of reestablishment(include a plan view drawing and indicate what was set and/or found)

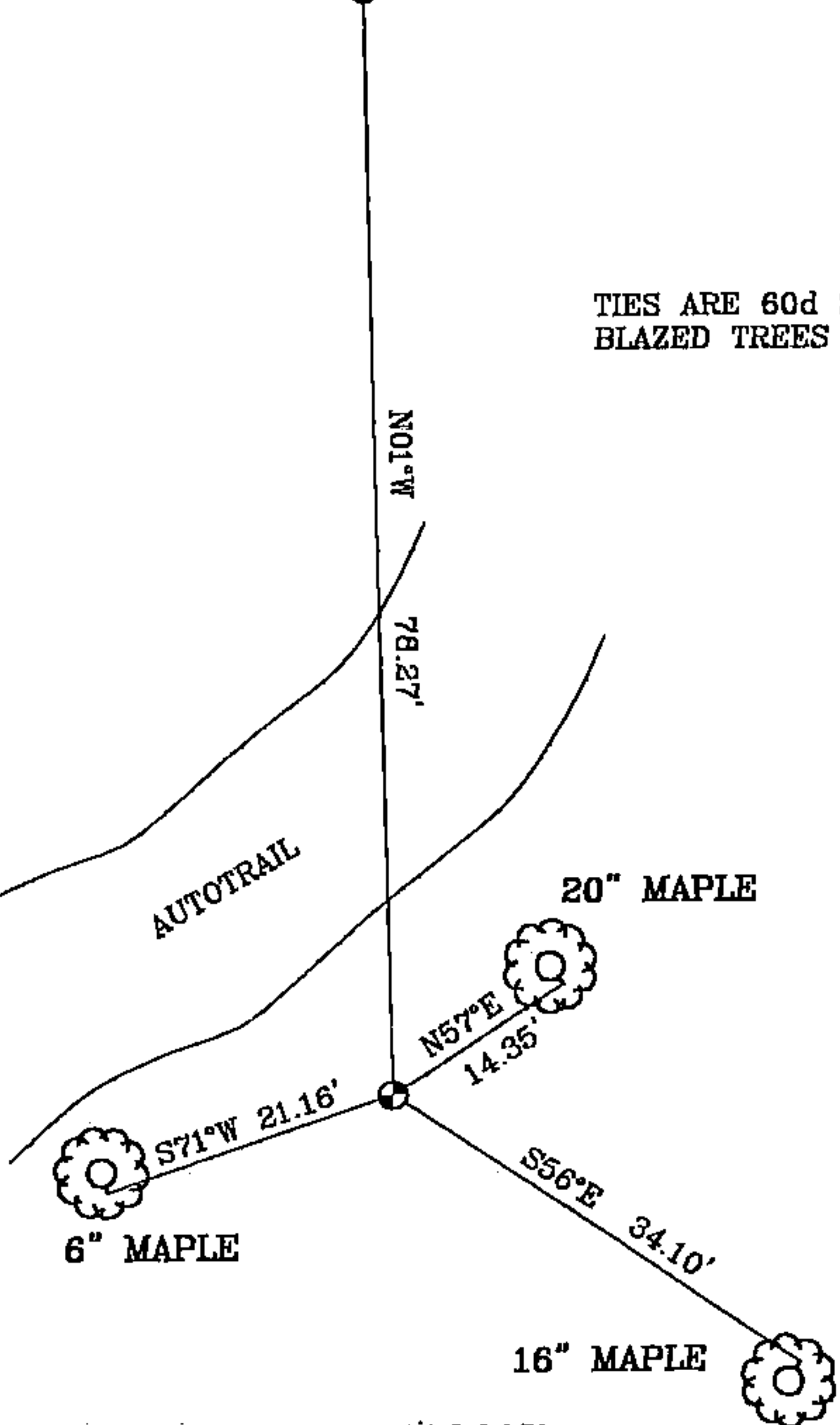
Describe the monument and accessories used to perpetuate the location of this corner. (include a plan view drawing and indicate what was set and/or found)



The SOUTH QUARTER CORNER
of Section 4, T36N-R16E
Forth Principal Meridian,
Forest County, Wisconsin



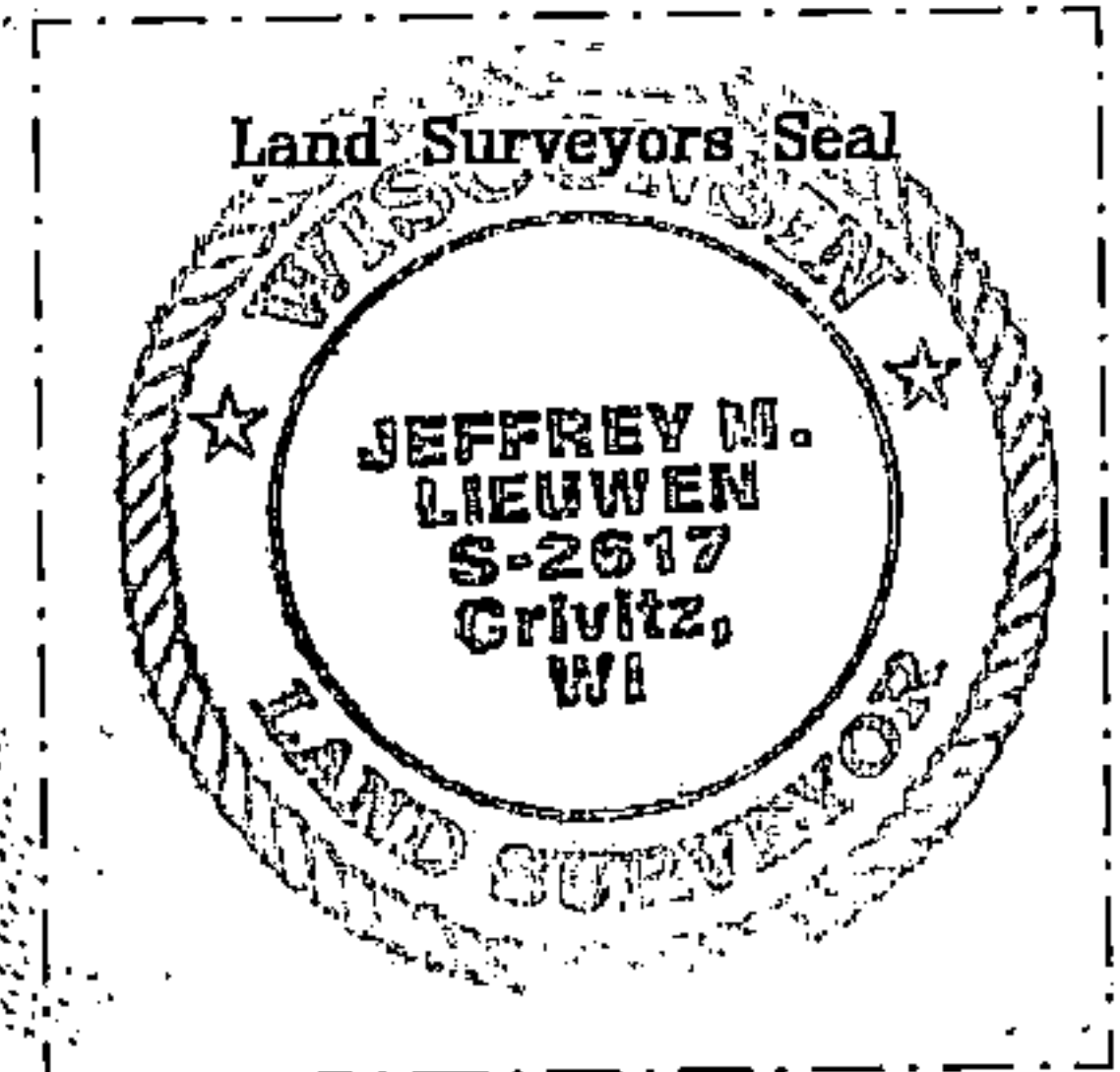
● = Location



TIES ARE 60d SPIKES IN SIDES OF
BLAZED TREES AS NOTED



SCALE: 1" = 20'



I, JEFFREY M. LIEUWEN RLS 2617
(type or print name) certify that the corner location shown on this record was determined by
me or under my direction and control and that this U.S. Public Land Survey Monument Record
is correct and complete to the best of my knowledge and belief.

Jeffrey M. Lieuwen
Signature



Nov. 6, 2007
Date

Index No. E-11

4361604 0020

E-11