

U. S. PUBLIC LAND SURVEY MONUMENT RECORD

INSTRUCTIONS:

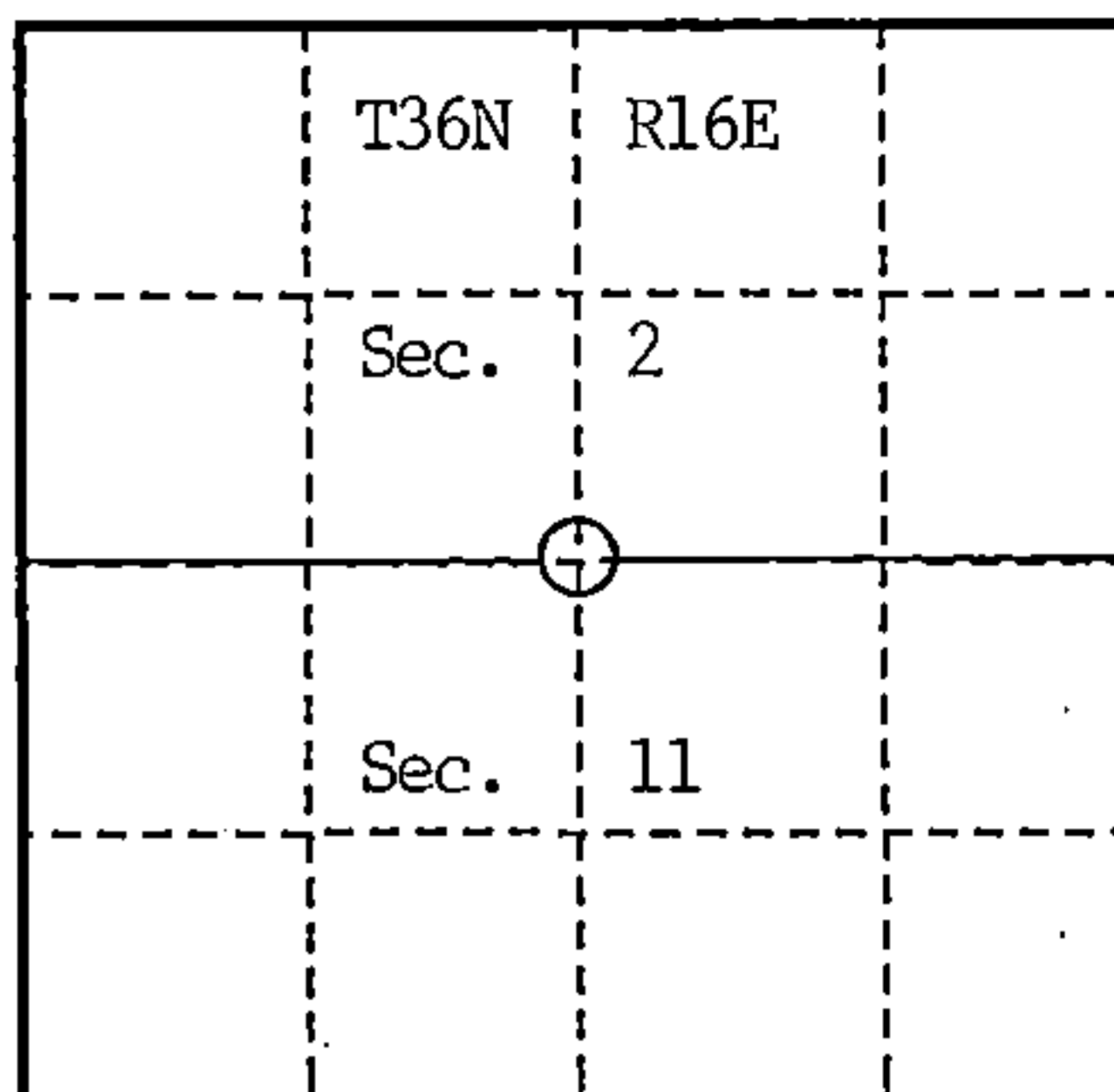
This record shall show the location of the corner and shall include all of the following nine elements (a through i).

- (a) Identify the corner by reference to the U.S. public land survey system.  
 O = Corner monument restored.

Quarter Corner common to Sections 2 and 11,  
 T36N-R16E

Index Number E-19 (T36N-R16E)

Forest County, Wisconsin



- (b) Describe any record evidence, monument evidence, occupational evidence, testimonial evidence or any other material evidence you considered, and whether the monument was found or placed.

1858 - Original post established by James McBride, witnessed by 16 W. Birch South 51 lks.; 14 W. Birch N44E 29 lks.

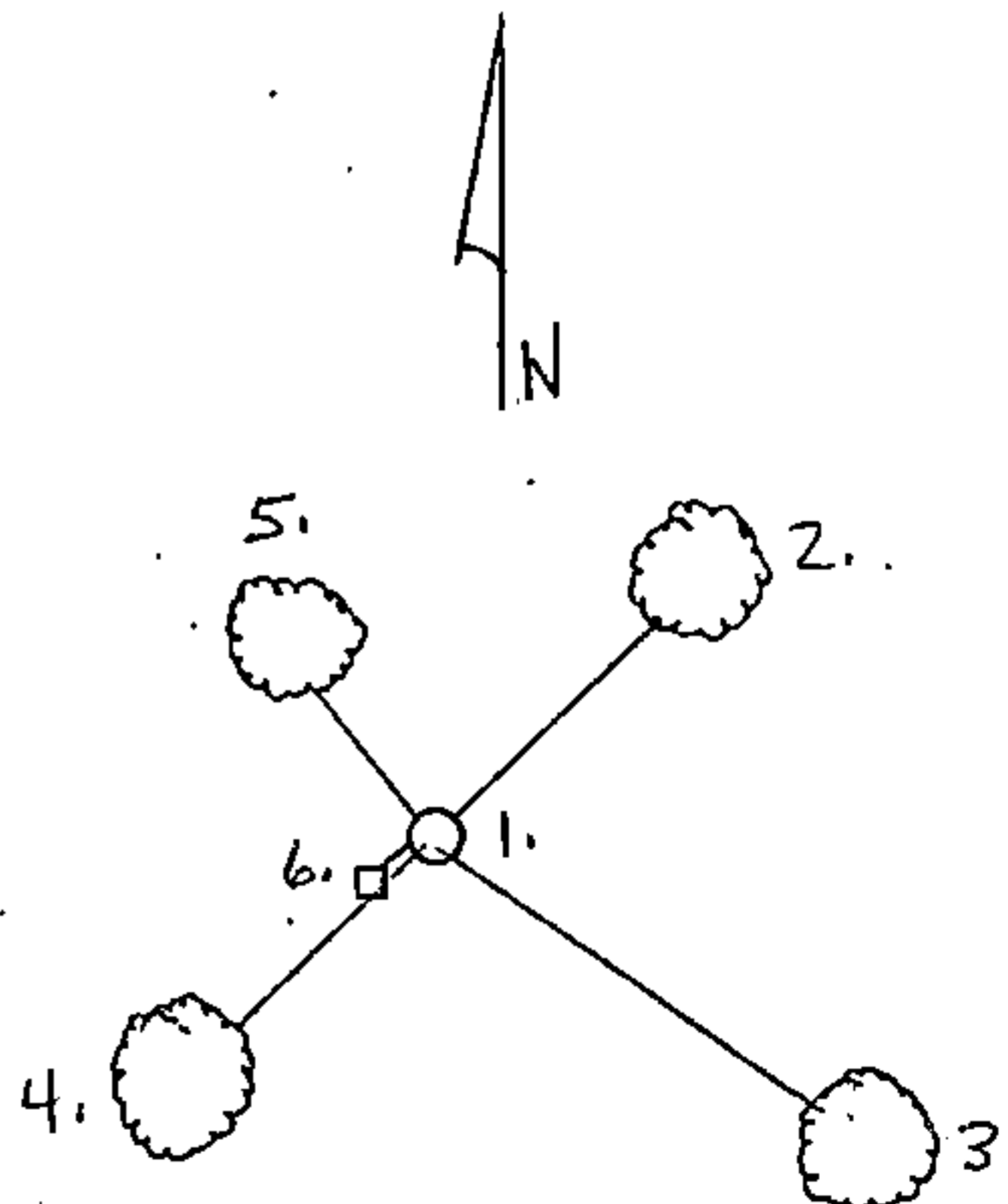
1930 - Goodman Lumber Co. notes show corner restored as post set in pile of stones, apparently by proportionate measure. No recovery of original monument or BTs was noted, nor was the marking of NBTs.

1991 - Coleman Engineering Company established a traverse survey between the SW and SE corners of Section 11 to locate the area of corner search. No identifiable remains of the original monument or BTs were found, nor was the post from 1930. However, the remnants of the 1930 stone mound were recovered N03°E 6.4 feet from the calculated corner position. Since the 1930 record was unclear as to the method of corner restoration (no Goodman record for the SE corner of Section 2), the true corner was considered lost. The calculated midpoint location was monumented as the Most probable corner position. No other evidence of occupation or possession was apparent.

- (c) In the plan view drawing below, provide reference ties to at least 4 witness monuments, or, if the location is within a municipality, to at least 2 witness monuments. (witness monuments shall be made of concrete, natural stone, iron or other equally durable material.)

- (d) Show a plan view drawing depicting the relevant monuments and reference ties which is sufficient in detail to enable accurate relocation of the corner monument if the corner monument is disturbed. Indicate north.

1. 2½" x 36" Aluminum monument with position stamped on cap.
2. Sugar 8" N40°E 16.18 feet.
3. Basswood 5" S61°E 26.69 feet.
4. Aspen 8" S41°W 18.39 feet.
5. Aspen 6" N38°W 10.09 feet.
6. Steel sign post Southwest 1.15 feet.



REGISTER'S OFFICE  
 Forest County, Wis.

Received for record this 8th day  
 of October, A.D., 1991 at  
2:00 o'clock P. M. and recorded  
 in Vol. Corner Restorations  
 page E-19

*Paul H. Schenck*  
 Register of Deeds

43616020020

E-19

(a) Describe any material discrepancy between the location of the corner as restored or reestablished and the location of that corner as previously restored or reestablished by distance and direction. Show the discrepancy on the plan view drawing under (d), above. Show the distances between the corner as previously restored or reestablished and (1) the corner as restored or reestablished, and (2) to at least 2 of the witness monuments shown on the drawing in (d), above.

Found no evidence of prior corner recovery or restoration acceptable for this survey.

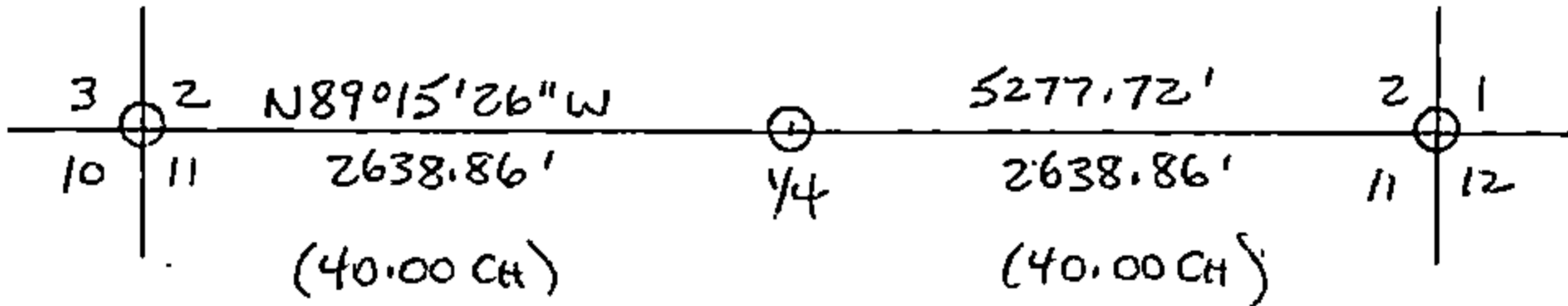
(f) Was the corner restored through acceptance of (1) an obliterated evidence location, or, (2) a found perpetuated location?

Neither.

(g & h) Was the corner reestablished through lost corner proportionate methods? If so, show the method, including the directions and distances to other public land survey corners used as evidence or used for proportioning in determining the corner location?

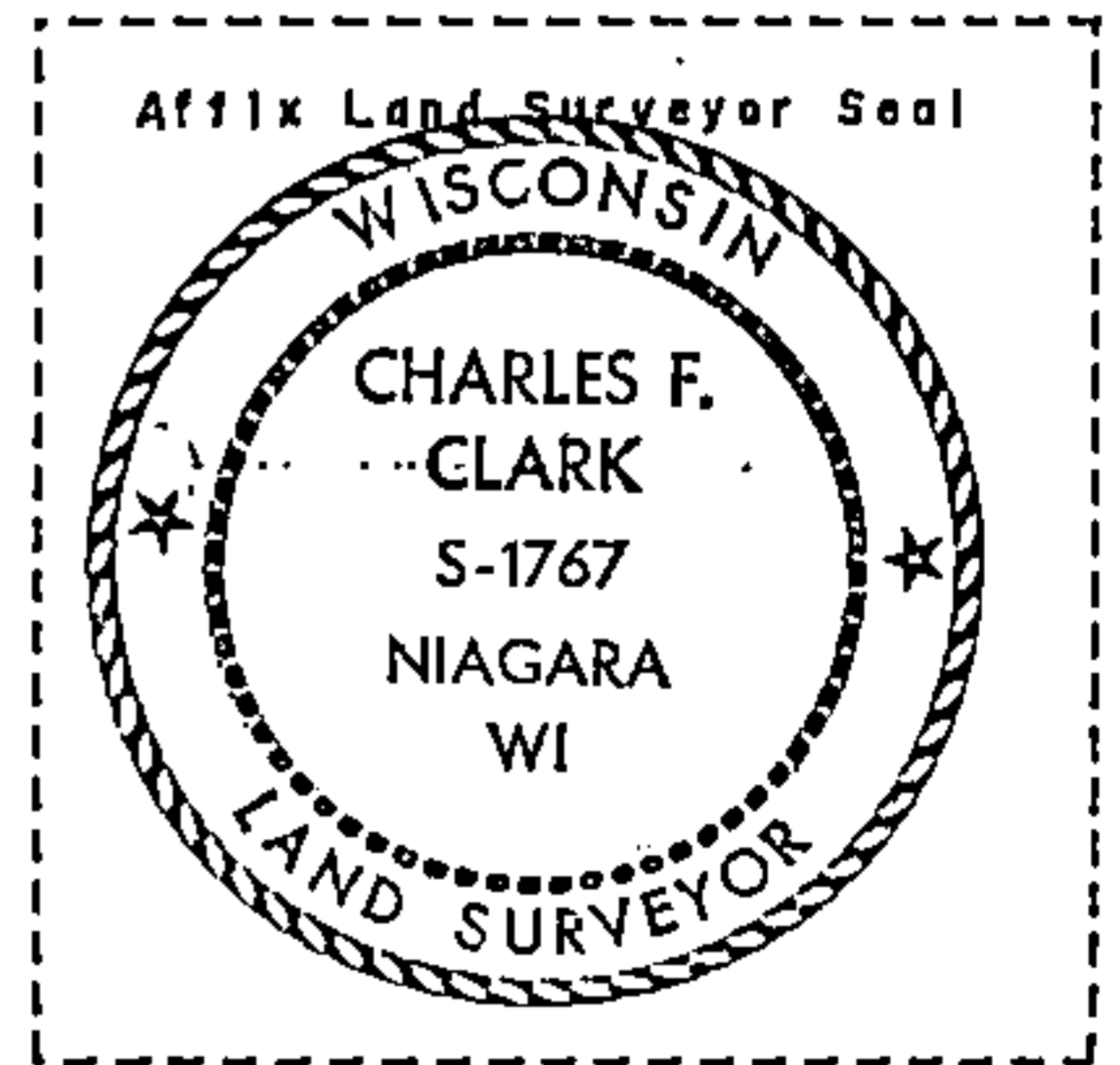
Corner was restored by proportionate method at the midpoint of the straight line between the SW and SE corners of Section 2.

T36N-R16E



(1) I, Charles F. Clark, RLS 1767  
COLEMAN ENGINEERING COMPANY

(type or print name) certify that the corner location shown on this record was determined by me or under my direction and control and that this U.S. Public Land Survey Monument Record is correct and complete to the best of my knowledge and belief.



Charles F. Clark

August 23, 1991

Signature

Date

CERTIFICATE READY FOR FILING:

Darrell E. Richards  
Acting District Ranger