

Document Number
167227

REGISTER'S OFFICE
Forest County, Wis.
Received for record this 2nd day
of December A.D., 1999 at
11:00'clock A.M. and recorded
in Vol. CR
page V-11
Kay Swanson, Deputy
Register of Deeds

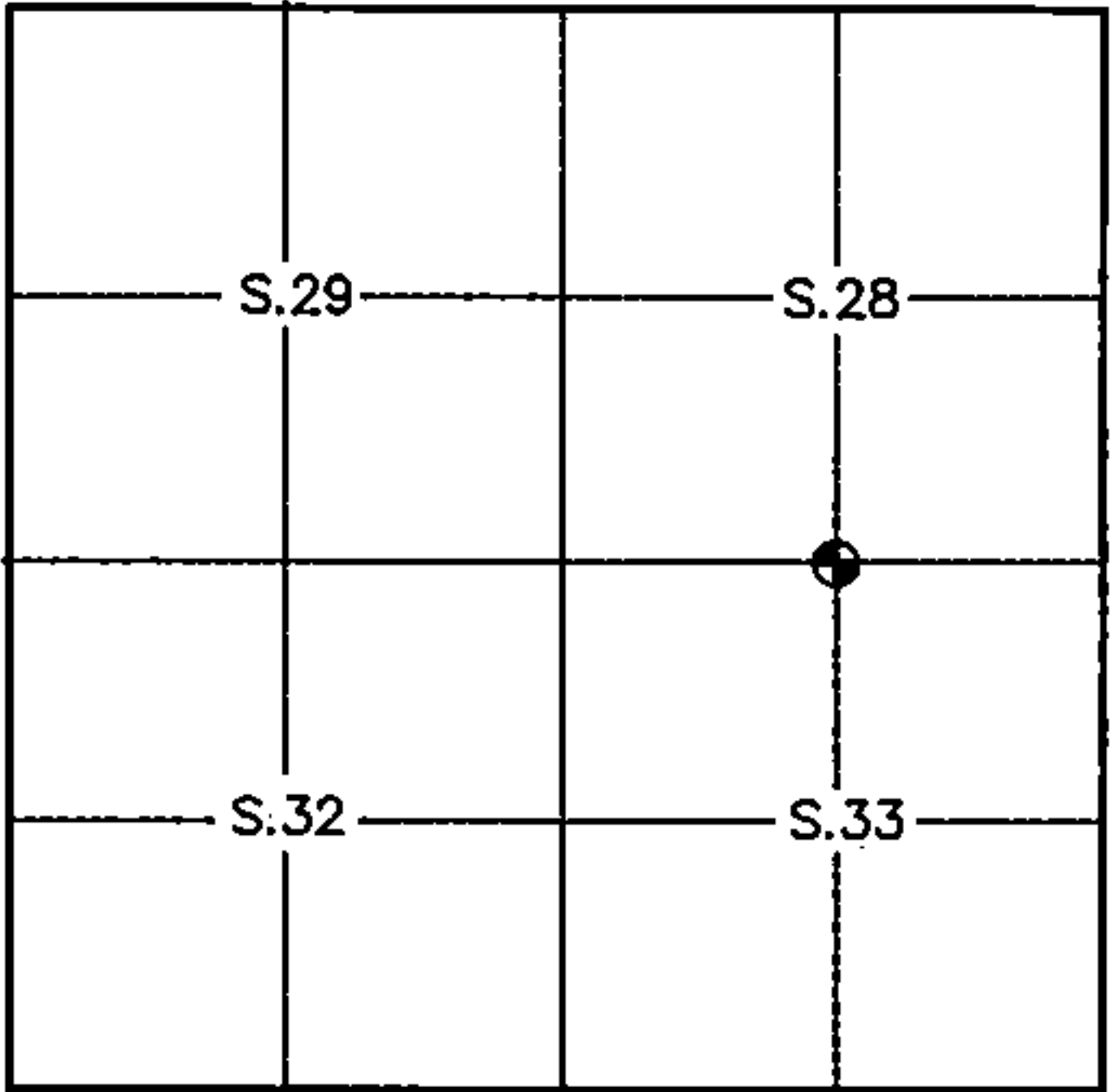
U. S. PUBLIC LAND SURVEY MONUMENT RECORD

INSTRUCTIONS:

This record shall show the location of the corner and shall include all the following nine elements (a through i).

Identify the corner by reference to the U. S. public land survey system.

1/4 Corner of Sections 28 & 33
T36N, R15E



⊙ = Corner Monument Re-established.

(a) History of original corner establishment:

Date of original survey: July 18, 1859
Original Surveyor: James McBride
Original Monument: Wood Post
Original Bearing Trees: Spruce 8" N 84° E 15 lks. (9.90')
Spruce 8" S 02° E 68 lks. (44.88')

(b) Describe any record evidence, monument evidence, occupational evidence, testimonial evidence or any other material evidence you considered, and whether the monument was found or placed.

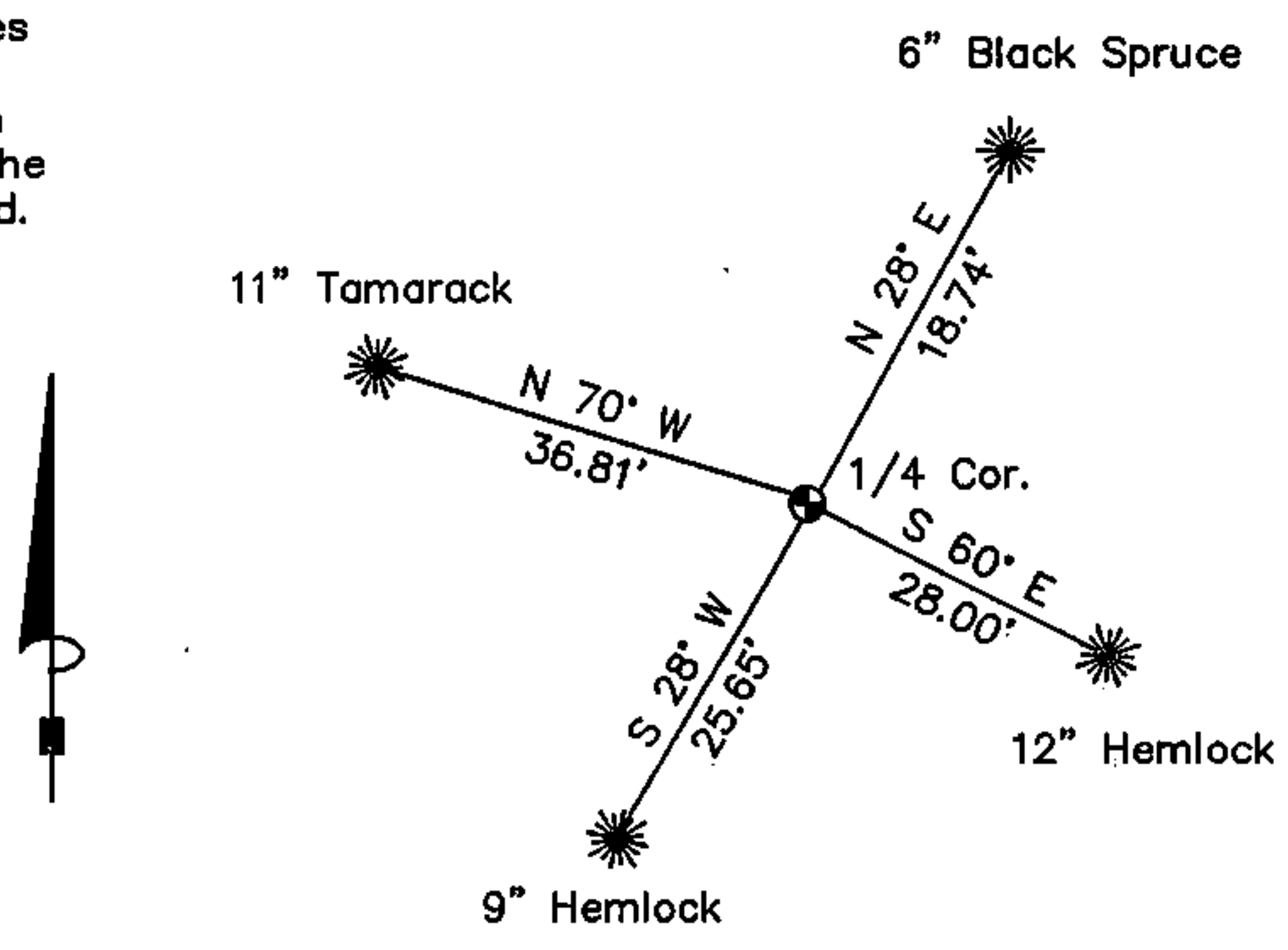
Found no evidence of the original corner or original bearing trees.

Set a Forest County Aluminum Monument at re-established 1/4 Corner position. See (g & h).
2" Aluminum pipe with cast aluminum cap stamped as follows: T36N, R15E, 1/4 , S.28, S.33, 1999, S-2197.

(c) In the plan view drawing below, provide reference ties to at least 4 witness monuments, or, if the location is within a municipality, to at least 2 witness monuments. (witness monuments shall be made of concrete, natural stone, iron or other equally durable material.)

(d) Show a plan view drawing depicting the relevant monuments and reference ties which is sufficient in detail to enable accurate relocation of the corner monument if the corner monument is disturbed. Indicate north.

Made the following new bearing trees:
NOTE: Measurements were taken to a nail in the side of tree.



Index No. V-11

43615280020



167227

Stock No. 26273

- (e) Describe any material discrepancy between the location of the corner as restored or reestablished and the location of that corner as previously restored or reestablished by distance and direction. Show the discrepancy on the plan view drawing under (d) above. Show the distances between the corner as previously restored or reestablished and (1) the corner as restored or reestablished, and (2) to at least 2 of the witness monuments shown on the drawing in (d), above.

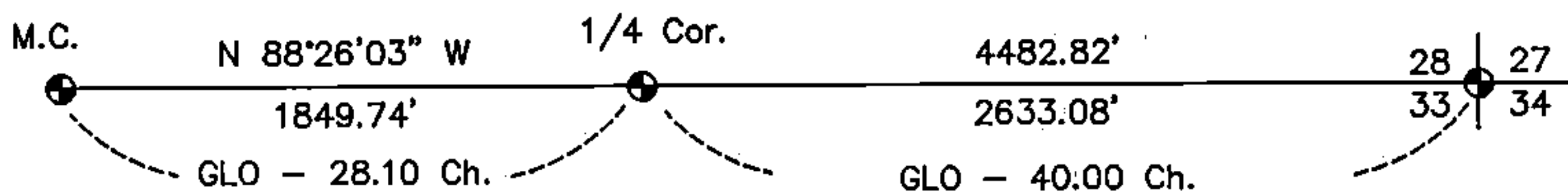
None

- (f) Was the corner restored through acceptance of (1) an obliterated evidence location, or, (2) a found perpetuated location?

No

- (g & h) Was the corner reestablished through lost corner proportionate methods? If so, show the method, including the directions and distances to other public land survey corners used as evidence or used for proportioning in determining the corner location?

Re-established corner by single proportionate measurement.



- (i) I, Michael A. Trembl, Registered Land Surveyor No. 2197
(type or print name) certify that the corner location shown on this record was determined by me or under my direction and control and that this U.S. Public Land Survey Monument Record is correct and complete to the best of my knowledge and belief.

Michael A. Trembl
Signature

11-30-99
Date



Office of Register of Deeds, County of Forest, I hereby certify that the within instrument was filed in this office for record on the _____ day of _____, 19____ at _____ o'clock _____ M.

(Register of Deeds)

By _____ Deputy

DOCUMENT NUMBER - _____