

Document Number

179539

REGISTER'S OFFICE  
Forest County, Wis.  
Received for record this 21<sup>st</sup> day  
of May A.D. 2003 at  
9:15 o'clock A.M. and recorded  
in Vol. Corner Restoration  
page 0-23  
Kay Swanson, Deputy  
Register of Deeds

U.S. PUBLIC LAND SURVEY MONUMENT RECORD

(As Required by WI Adm. Code)

History of original corner establishment and subsequent restorations and descriptions of any record, monument, occupational, testimonial or other evidence considered:

Corner not set in original Government Survey.

2003 - I established the CN 1/16 corner midpoint and on line between the C 1/4 of Sec. 24 & the North quarter corner of Sec. 24.  
Set a 1" x 30" Forest County Aluminum Monument stamped for the CN 1/16 corner.

Corner was: (Check All That Apply)

- Restored through acceptance of an obliterated evidence location.
- Restored through acceptance of a found perpetuated location.
- Considered a lost corner and reestablished through lost corner proportionate methods (include a plan view drawing showing distances and directions to other Public Land Survey Corners used for proportioning and determining the corner location).
- Restored or reestablished in a location that differs from a previous restoration or reestablishment (include a plan view drawing and indicate what was set and/or found).

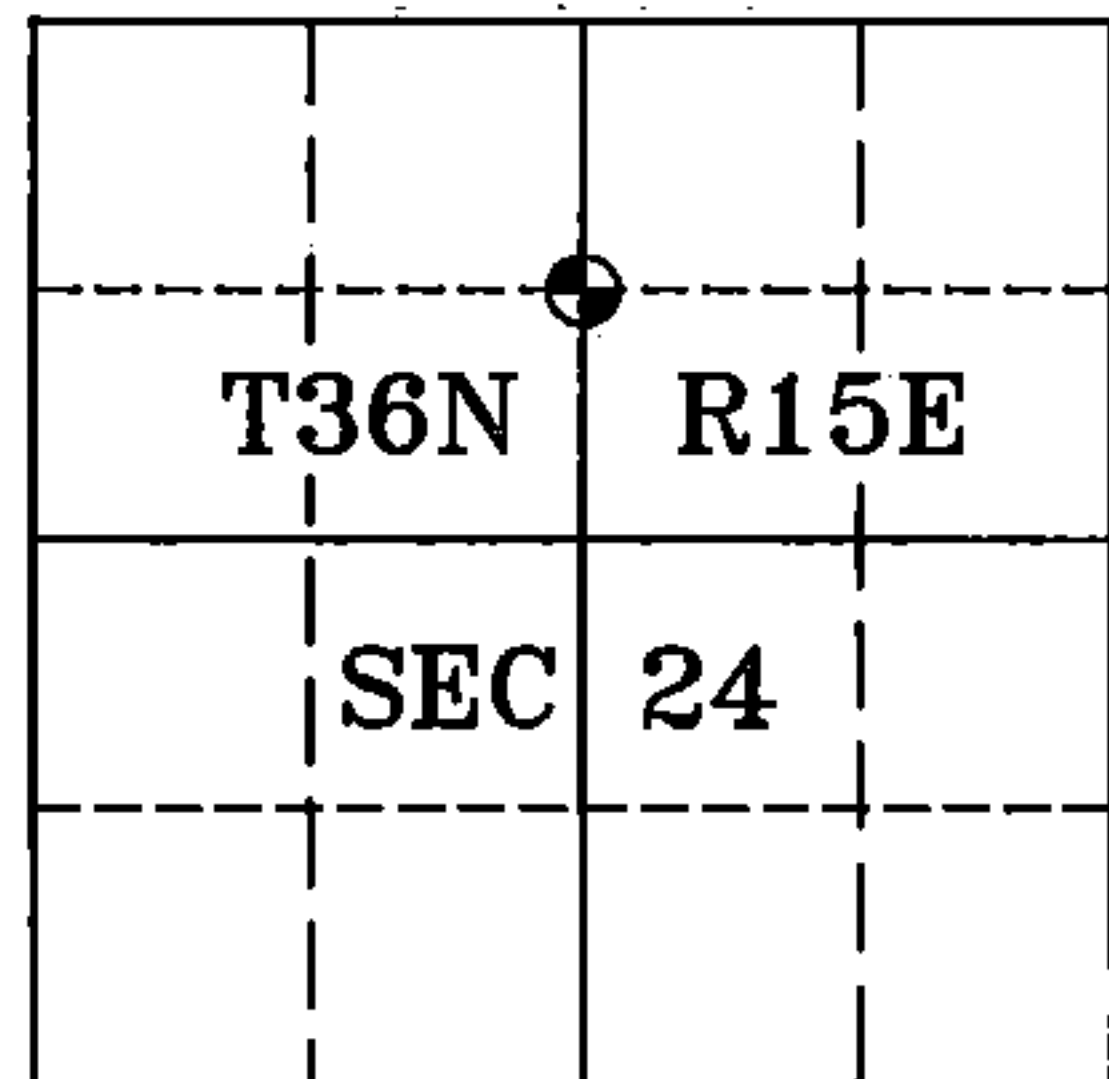
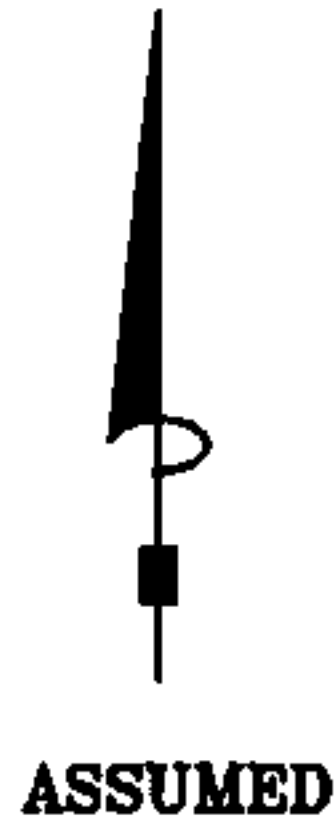
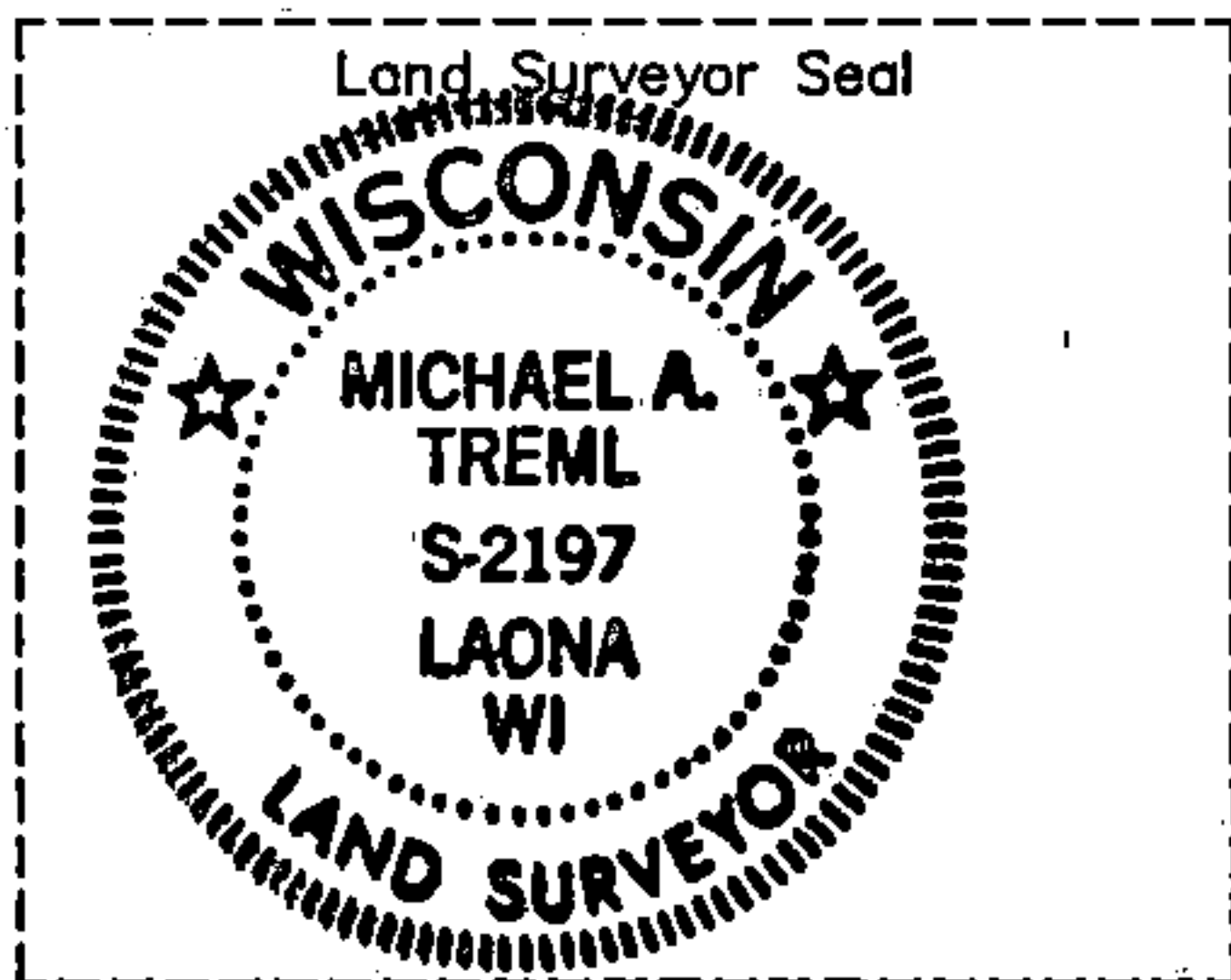
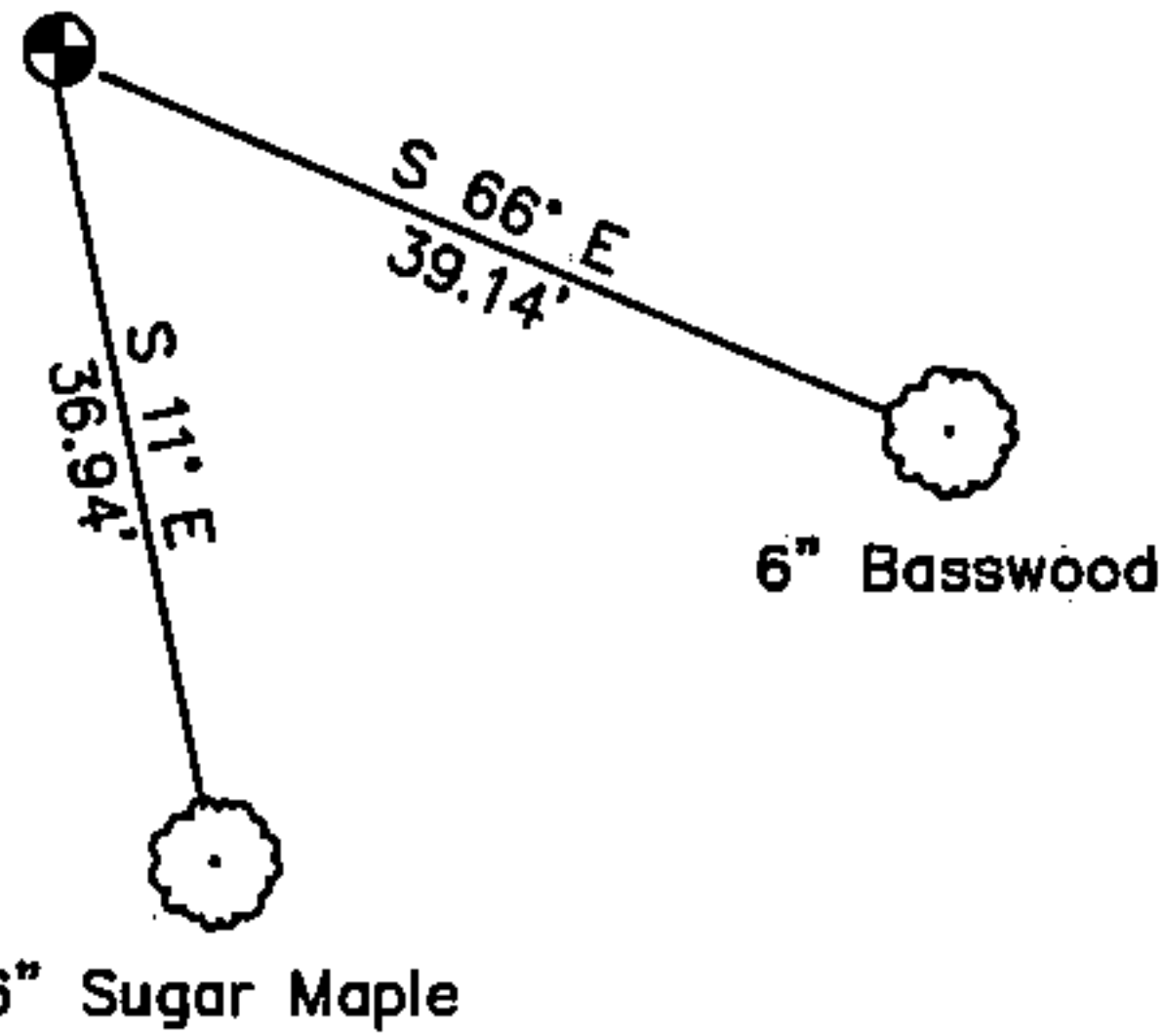
Describe the monument and accessories used to perpetuate the location of this corner (include a plan view drawing and indicate what was set and/or found).

LEGEND:

-  Set Forest County Aluminum Monument

Note: All distances are taken to nail in side of tree.

CN 1/16 Cor.



I, Michael A. Tremel, RLS (type or print name) certify that the corner location shown on this record was determined by me or under my direction and control and that this U.S. Public Land Survey Monument Record is correct and complete to the best of my knowledge and belief.

Signature: *Michael A. Tremel* Date: 5/4/03

The Center North 1/16 corner of Section 24 T. 36 N., R. 15 E. Forest County, WI

Index No. 0-23

430015243020

0-23