

Document Number
179541

REGISTER'S OFFICE }
Forest County, Wis. }
Received for record this 21st day
of May A.D., 2003 at
9:15 o'clock A.M. and recorded
in Vol. Corner Restoration
page P-21.
Kay Swanson, Deputy
Register of Deeds

U.S. PUBLIC LAND SURVEY MONUMENT RECORD

(As Required by WI Adm. Code)

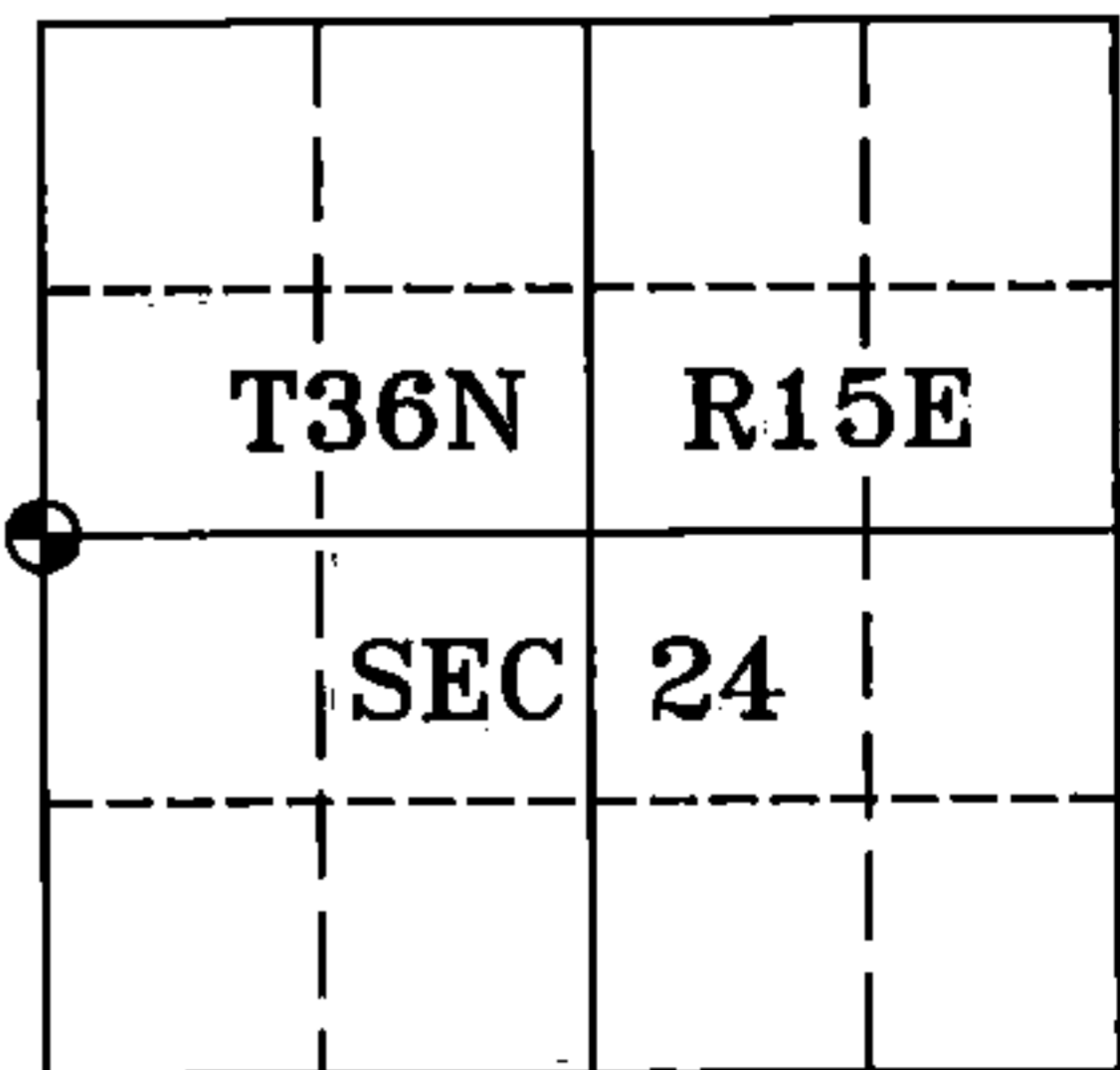
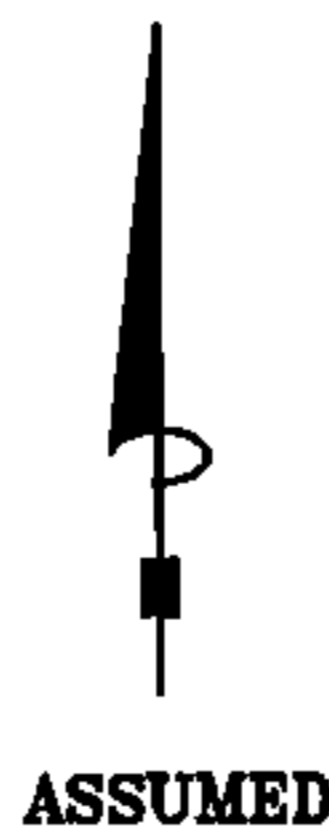
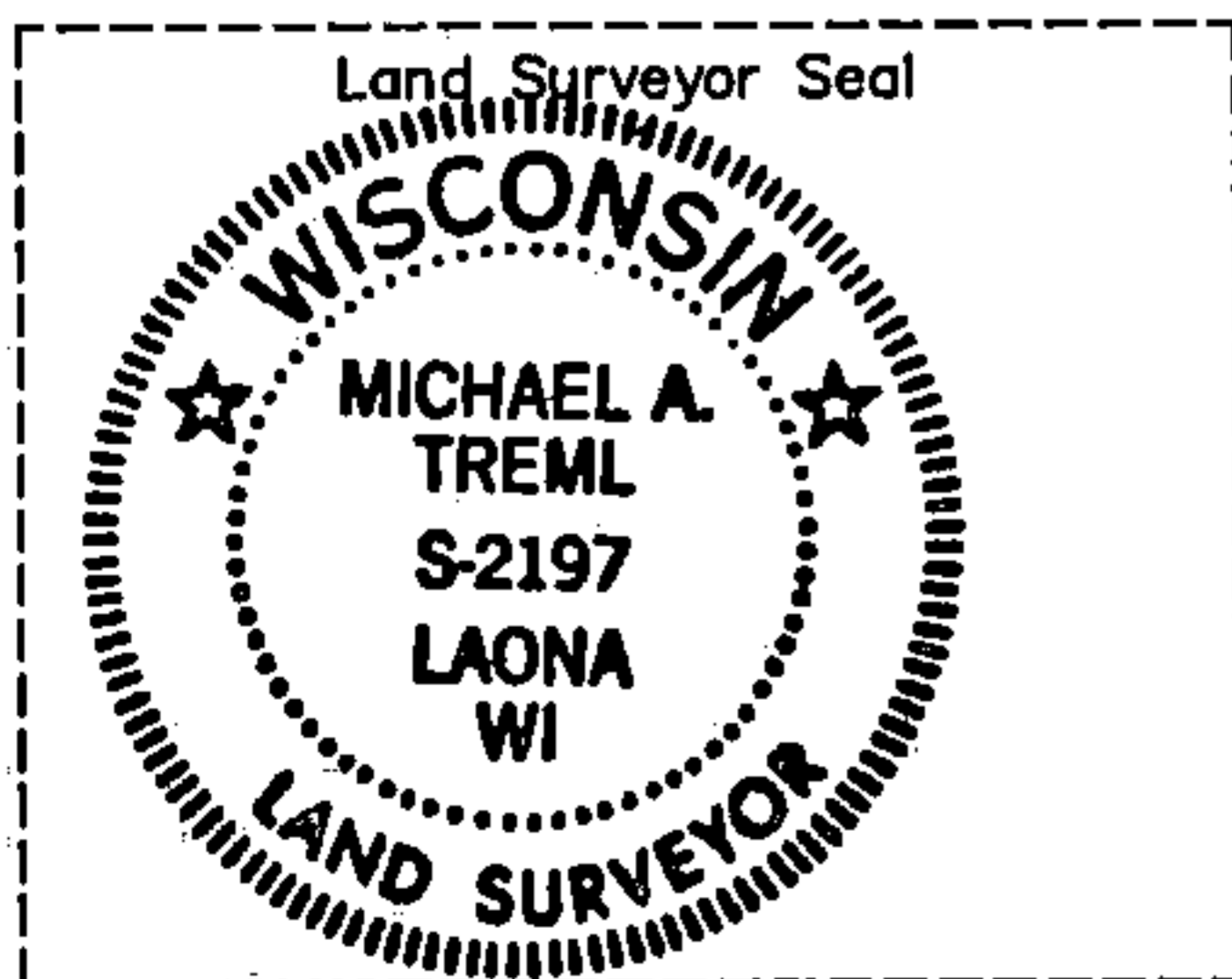
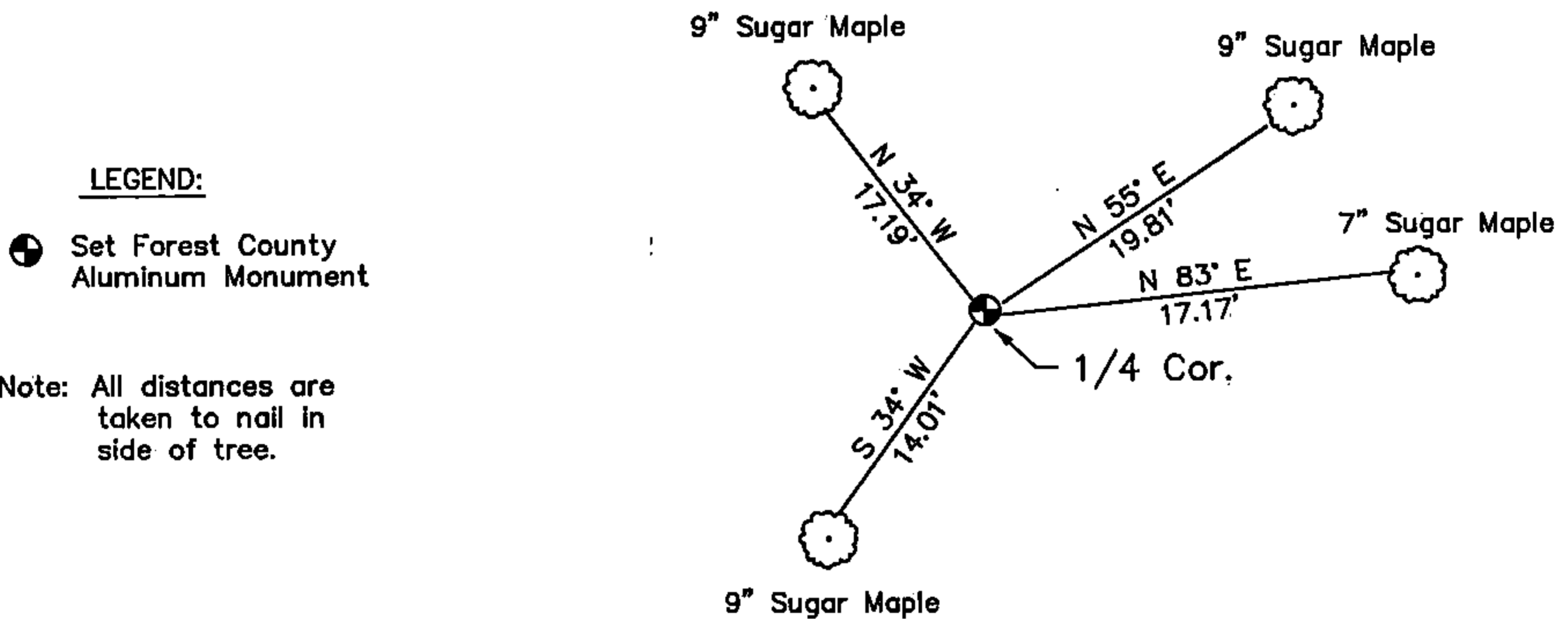
History of original corner establishment and subsequent restorations and descriptions of any record, monument, occupational, testimonial or other evidence considered:

- 1859 - James McBride, set original corner post and made the following B.T.'s:
Ironwood, 10", S 60° W, 35 lks., 23.10 feet.
Birch, 8", S 70° E, 21 lks., 13.86 feet.
- 1936 - H. Thalacker, compass man for the U.S.D.A. Forest Service found a cedar post in sound condition. Placed a metal location poster on a 2" maple tree from which the corner bears N40° E, 19 lks.
- 2003 - I found no evidence of the original corner post or accessories. I found a 4" X 4" Cedar post & an axle shaft in a mound of stone. Cedar post is N 40° E, 12.54 feet from a 4" maple w/location poster. I replaced cedar post with a 2" X 30" Forest County Aluminum Monument stamped for the 1/4 corner and made 4 new BT's.

Corner was: (Check All That Apply)

- Restored through acceptance of an obliterated evidence location.
- Restored through acceptance of a found perpetuated location.
- Considered a lost corner and reestablished through lost corner proportionate methods (include a plan view drawing showing distances and directions to other Public Land Survey Corners used for proportioning and determining the corner location).
- Restored or reestablished in a location that differs from a previous restoration or reestablishment (include a plan view drawing and indicate what was set and/or found).

Describe the monument and accessories used to perpetuate the location of this corner (include a plan view drawing and indicate what was set and/or found).



Michael A. Tremml, RLS
(type or print name) certify that the corner location shown on this record was determined by me or under my direction and control and that this U.S. Public Land Survey Monument Record is correct and complete to the best of my knowledge and belief.

Michael A. Tremml 5/4/03
Signature Date

The West Quarter corner of
Section 24 T. 36 N., R. 15 E.
Forest County, WI

Index No. P-21

43615232000

P-21