

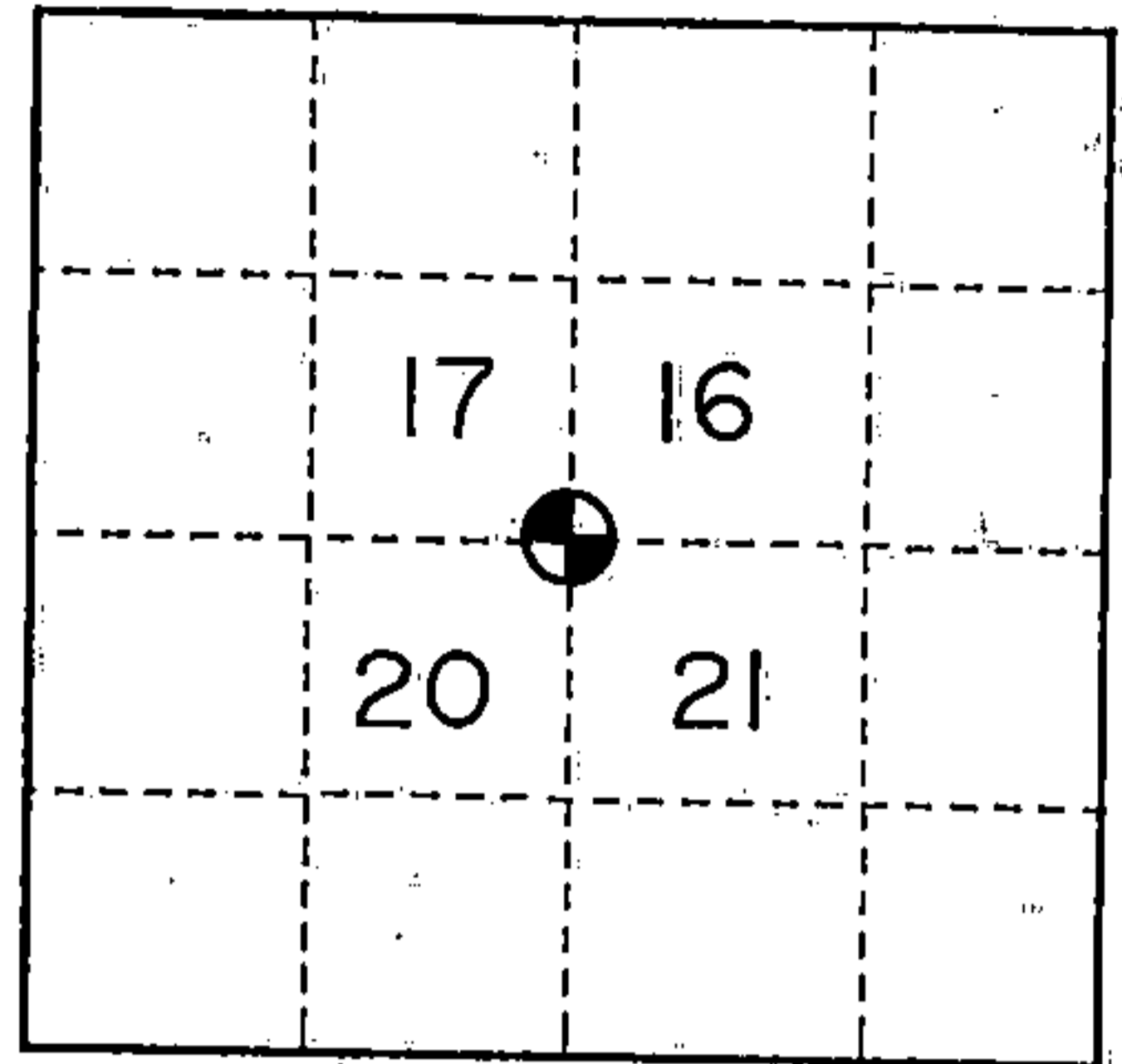
U. S. PUBLIC LAND SURVEY MONUMENT RECORD

INSTRUCTIONS:

This record shall show the location of the corner and shall include all of the following nine elements (a through i).

- (a) Identify the corner by reference to the U.S. public land survey system.
- = Corner monument restored.

Section corner common to Sections 17, 16, 21 & 20, T36N, R15E, 4th.P.M., Forest County, WI



- (b) Describe any record evidence, monument evidence, occupational evidence, testimonial evidence or any other material evidence you considered, and whether the monument was found or placed.

Original survey by James McBride, Deputy Surveyor, in 1859.

Original Bearing Trees:

Sugar 16" - N52°W - 10 links
 Birch 12" - N21°E - 11 links

Lind 12" - S05°E - 33 links
 Birch 12" - S15°W - 42 links

1909- JJ Melendy found post of resurvey. He set an ironwood post 4" x 4" in a mound of stones in place of old post.

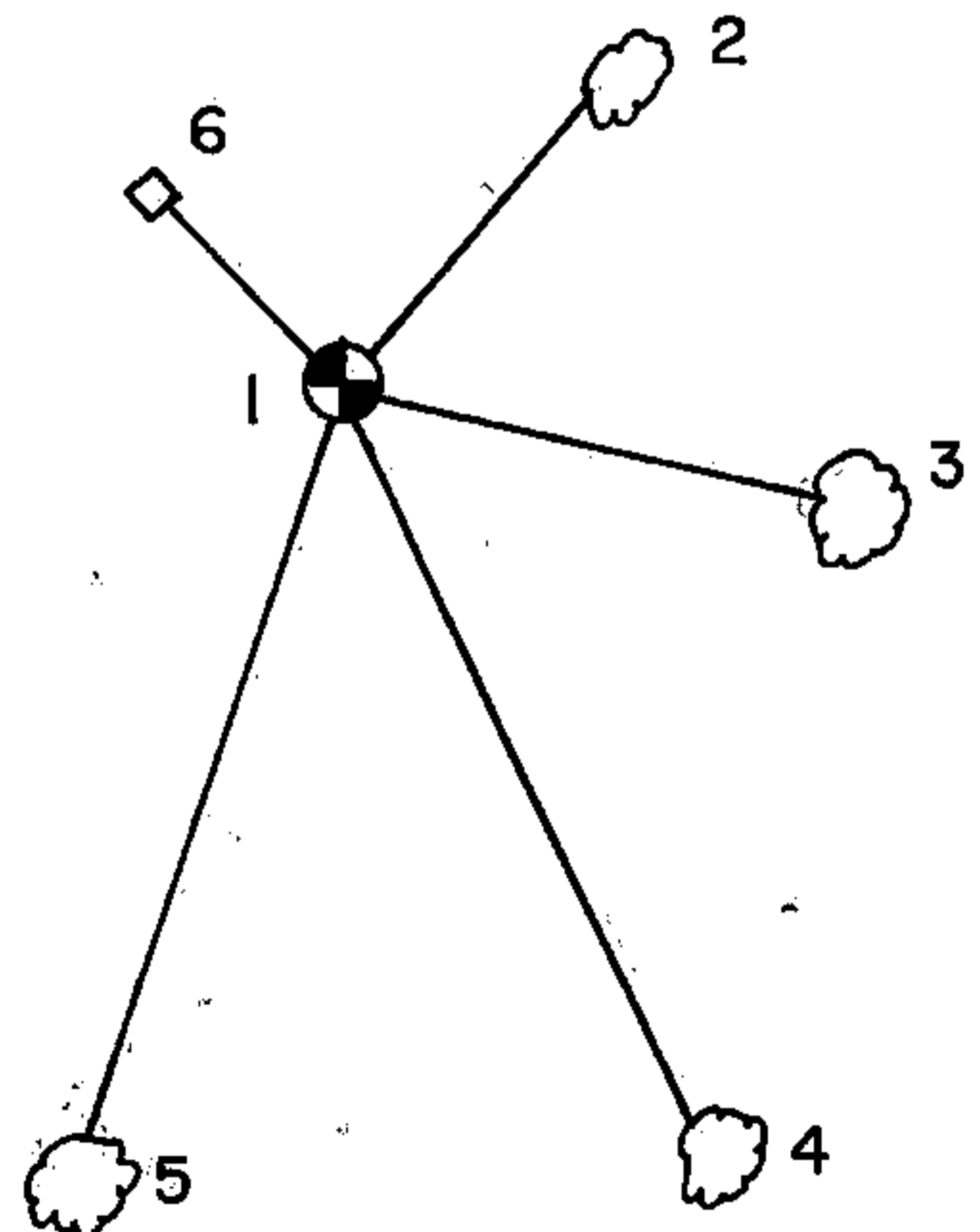
1993- I found an intersection of blazed lines and a pipe laying down near the blazes. Through testimony of Kenn Mullens, a forester with Northern Hardwoods, he described position as existing for over 40 years in the north rut of a trail at the intersection of blazed lines. I reestablished the corner position and set a 2 1/2" x 36" Bernsten monument in said location.

After placing corner, I made the following accessories.

- (c) In the plan view drawing below, provide reference ties to at least 4 witness monuments, or, if the location is within a municipality, to at least 2 witness monuments. (witness monuments shall be made of concrete, natural stone, iron or other equally durable material.)

- (d) Show a plan view drawing depicting the relevant monuments and reference ties which is sufficient in detail to enable accurate relocation of the corner monument if the corner monument is disturbed. Indicate north.

1. Set 2 1/2" x 36" alum. monument
2. Yellow Birch 6" - N41°E - 12.39 feet
3. Sugar 5" - S77°E - 17.69 feet
4. Yellow Birch 9" - S26°E - 37.07 feet
5. Sugar 4" - S19°W - 44.75 feet
6. Steel sign post - Northwest - 1.43 feet



(e) Describe any material discrepancy between the location of the corner as restored or reestablished and the location of that corner as previously restored or reestablished by distance and direction. Show the discrepancy on the plan view drawing under (d), above. Show the distances between the corner as previously restored or reestablished and (1) the corner as restored or reestablished, and (2) to at least 2 of the witness monuments shown on the drawing in (d), above.

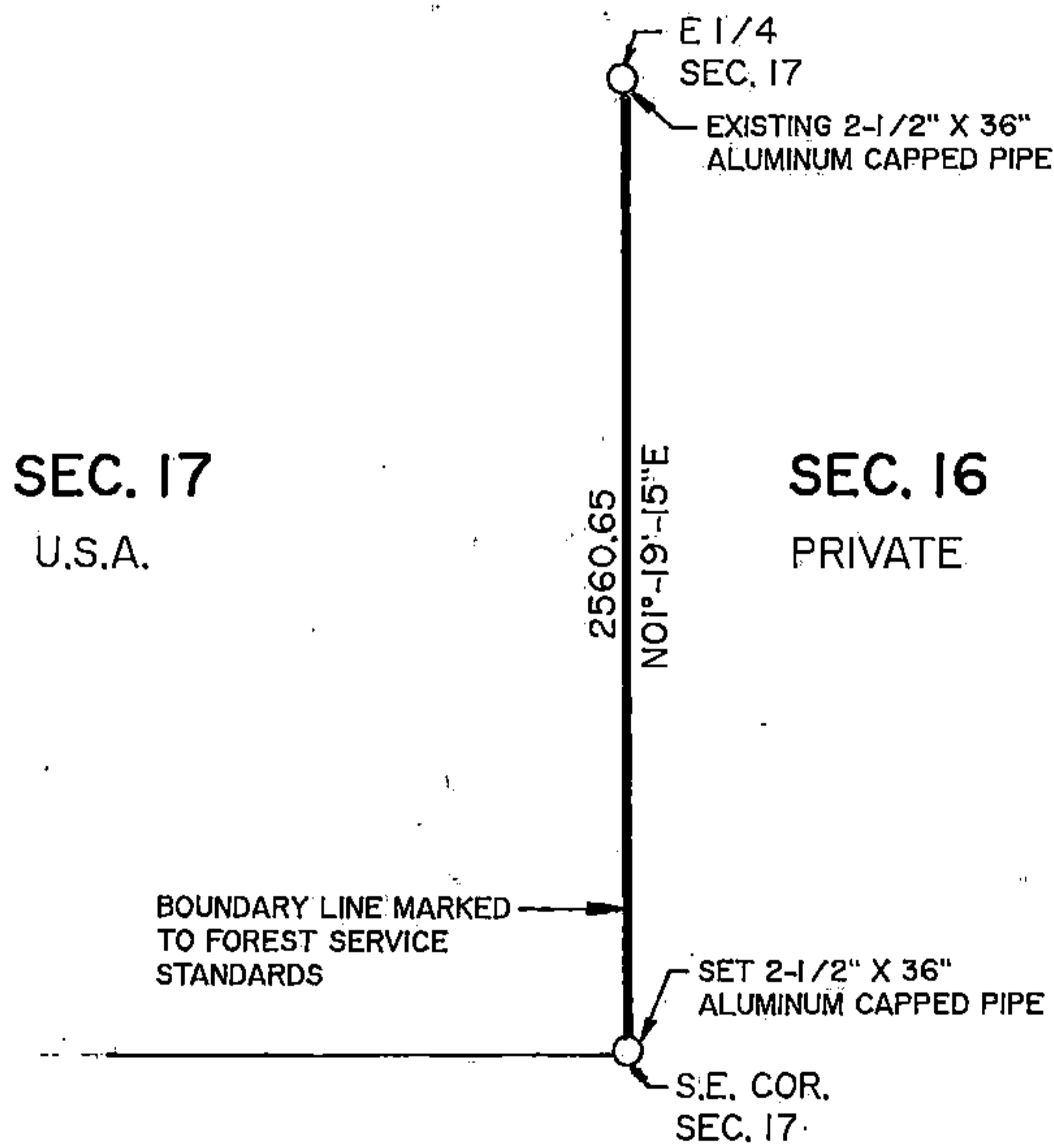
None

(f) Was the corner restored through acceptance of (1) an obliterated evidence location, or, (2) a found perpetuated location?

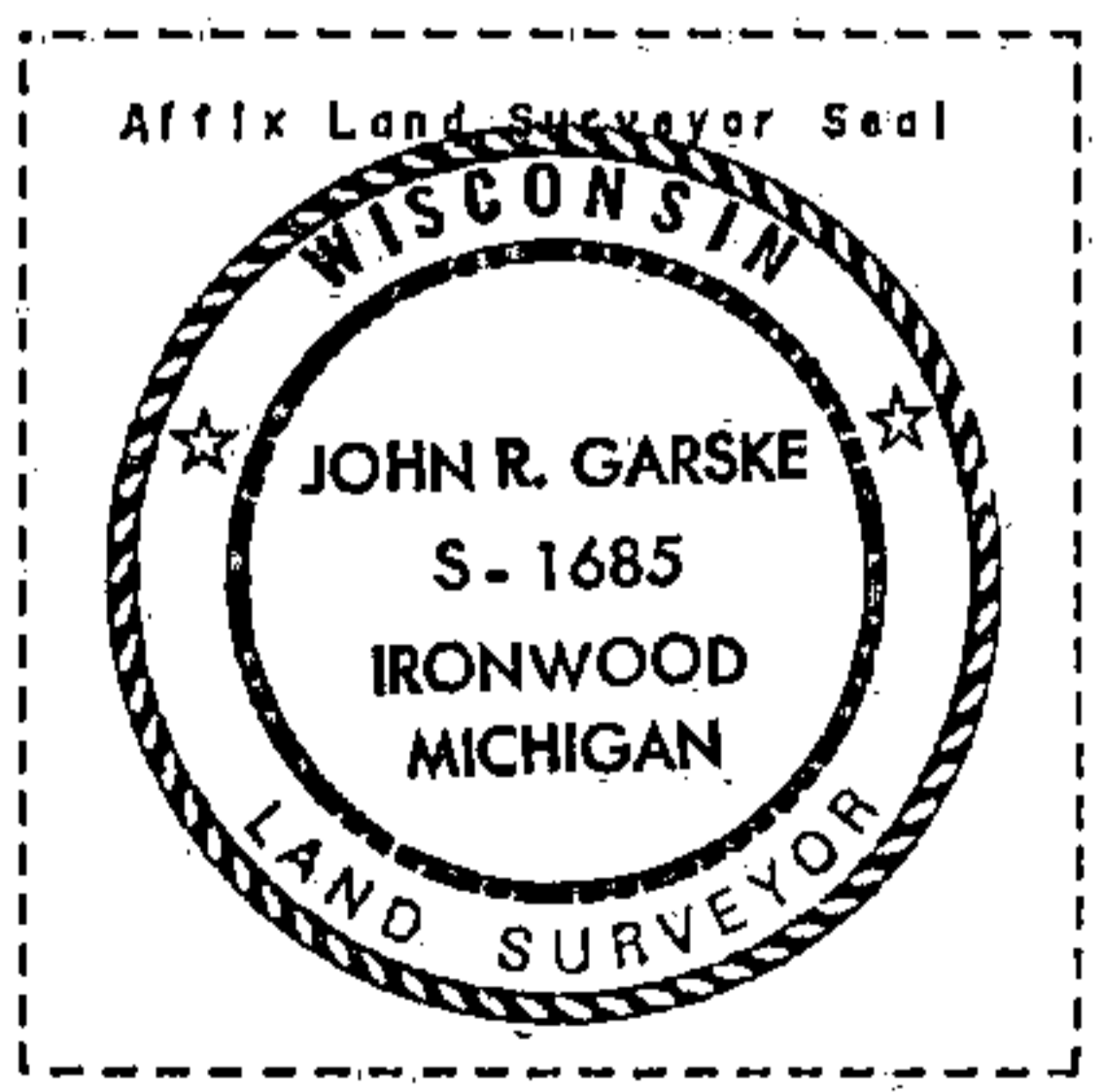
A found perpetuated location

(g & h) Was the corner reestablished through lost corner proportionate methods? If so, show the method, including the directions and distances to other public land survey corners used as evidence or used for proportioning in determining the corner location?

No



REGISTER'S OFFICE
FOREST COUNTY, WIS.
MAR 04 1994
At 9:45 O'clock P.M.
[Signature] Register of Deeds



(1) I, John R. Garske, S-1685

(type or print name) certify that the corner location shown on this record was determined by me or under my direction and control and that this U.S. Public Land Survey Monument Record is correct and complete to the best of my knowledge and belief.

John R. Garske 9/29/93
Signature Date

CERTIFICATE READY FOR FILING: Sue Vap
District Ranger