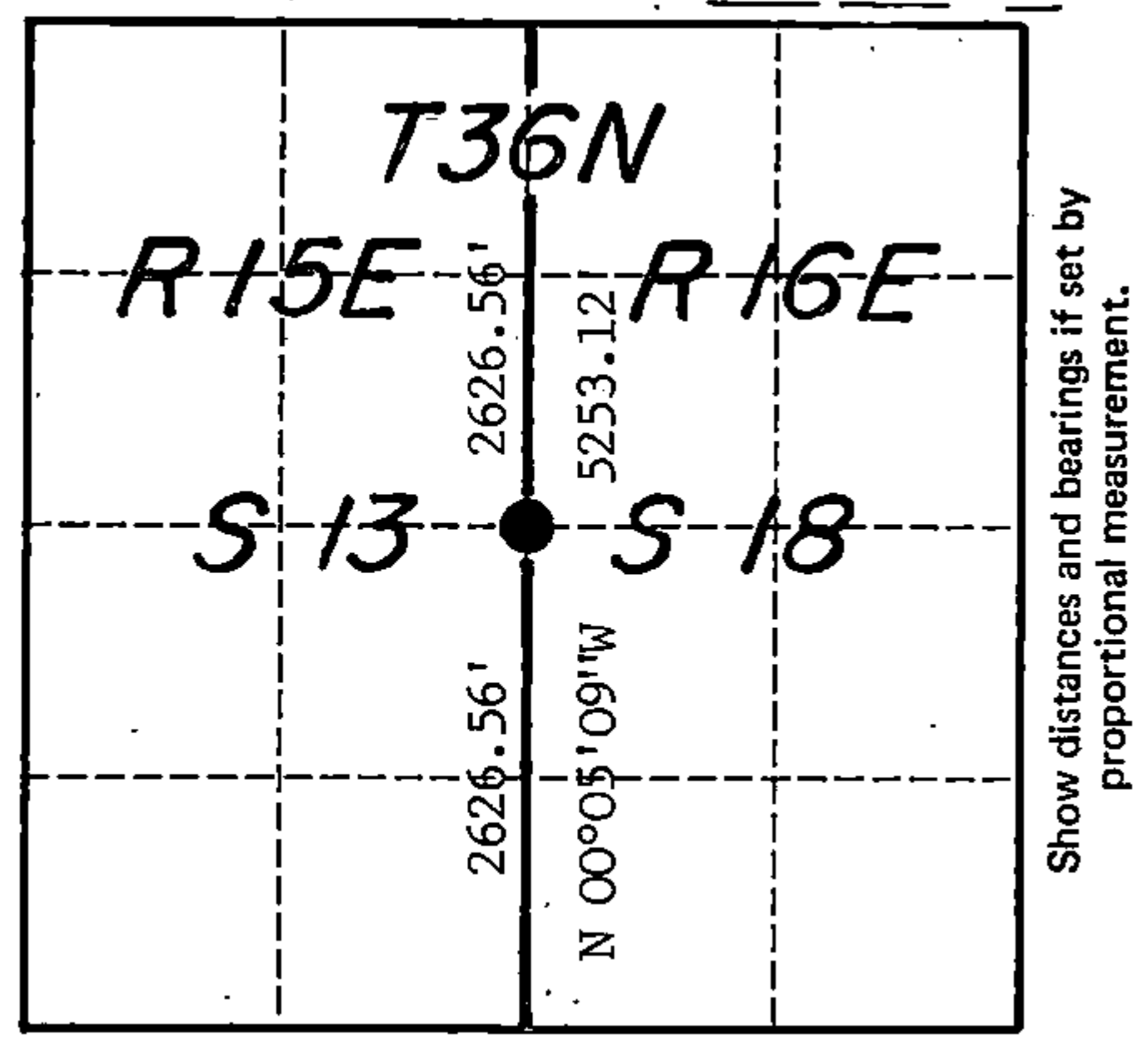


# U. S. PUBLIC LAND SURVEY MONUMENT RECORD

INDEX NO. L-25

Quarter \_\_\_\_\_ Corner to Section 13 18 T 36 N, R 15 E & 16  
(Section/Quarter)

History of original corner establishment, record evidence, monument evidence, occupational evidence, testimonial evidence or any other material evidence, and what you found and how the monument was set.



Show distances and bearings if set by proportional measurement.

In 1857 Artemus Curtis set a wood post at this corner location and scribed the following trees:

Elm	12"	S 81°W	25 links
Sugar	8"	N 34°E	34 links

I located a search area for this corner at the single proportionate position. It fell in a heavily logged area of young Popple slashing just east of a logging trail. After no evidence of either the corner or BTs was recovered, I determined the corner to be lost and set it at single proportionate measurement.

In the plan view drawing below, provide reference ties to at least 4 witness monuments, or, if the location is within a municipality, to at least 2 witness monuments. (Witness monuments shall be made of concrete, natural stone, iron or other equally durable material, except wood other than bearing trees.) Also, show any material discrepancies between the corner restored or re-established and the location of any other previous corner location or occupation.

○ = Corner monument restored.

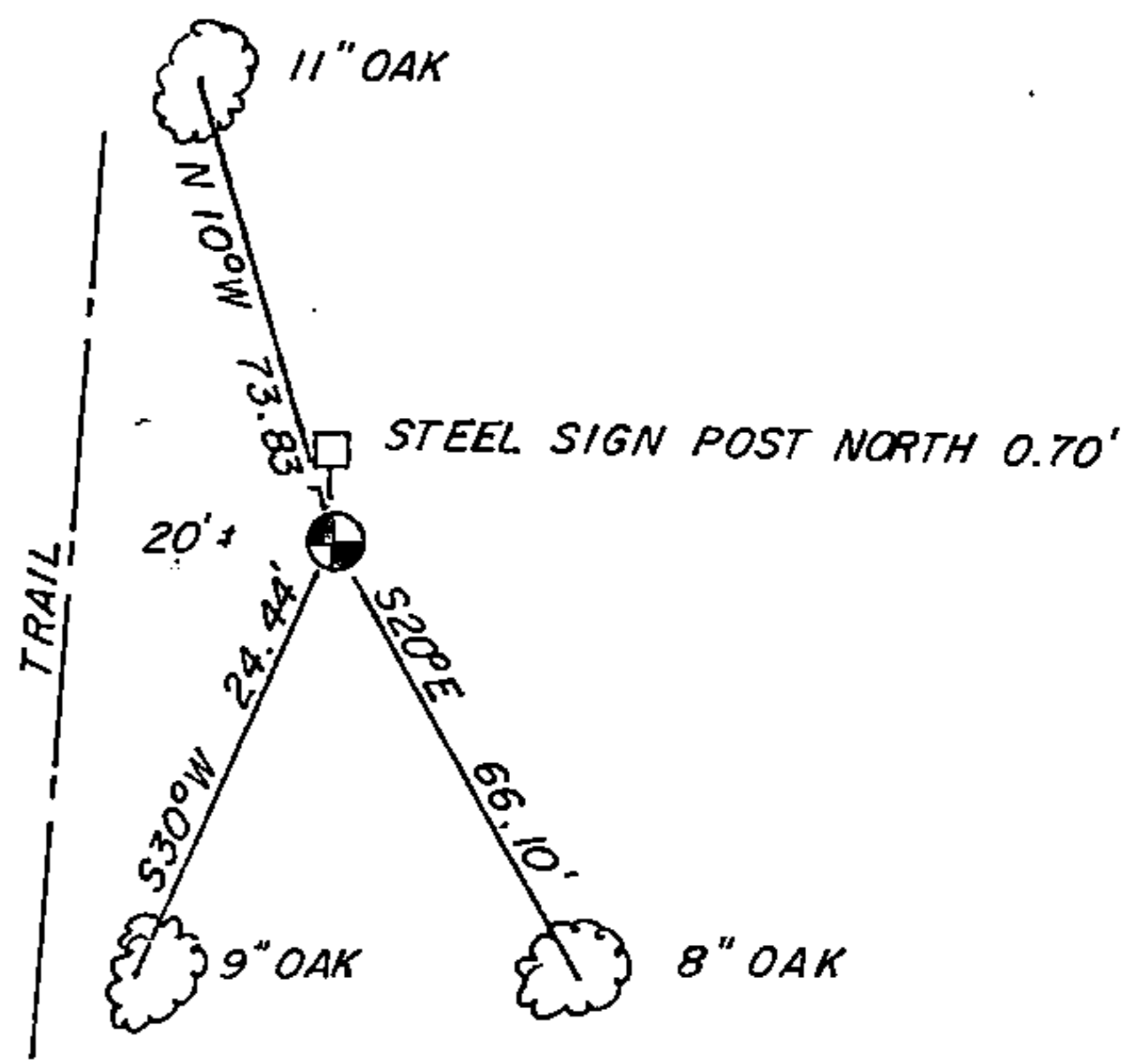


The corner consists of a 2½"x 36" aluminum monument with cap stamped for the corner. Distances are to nails driven into the tree centers which trees were blazed and scribed "BT". Bearings are magnetic.

DOCUMENT NUMBER  
**143540**

43615132000

REGISTER'S OFFICE  
Forest County, Wis.  
Received for record this 300 day  
of JANUARY A.D., 1992 at  
9:30 o'clock A.M. and recorded  
in Vol. CORNER RESTORATIONS  
page L-25  
*Paul Helebrand*  
Register of Deeds



I, Kim H Pritzlaff, Contractor for USFS  
(Type or print name) certify that the corner location shown on this record was determined by me or under my direction and control and that this U.S. Public Land Survey Monument Record is correct and complete to the best of my knowledge and belief.

*Kim H Pritzlaff*  
Signature

11/30/91  
Date