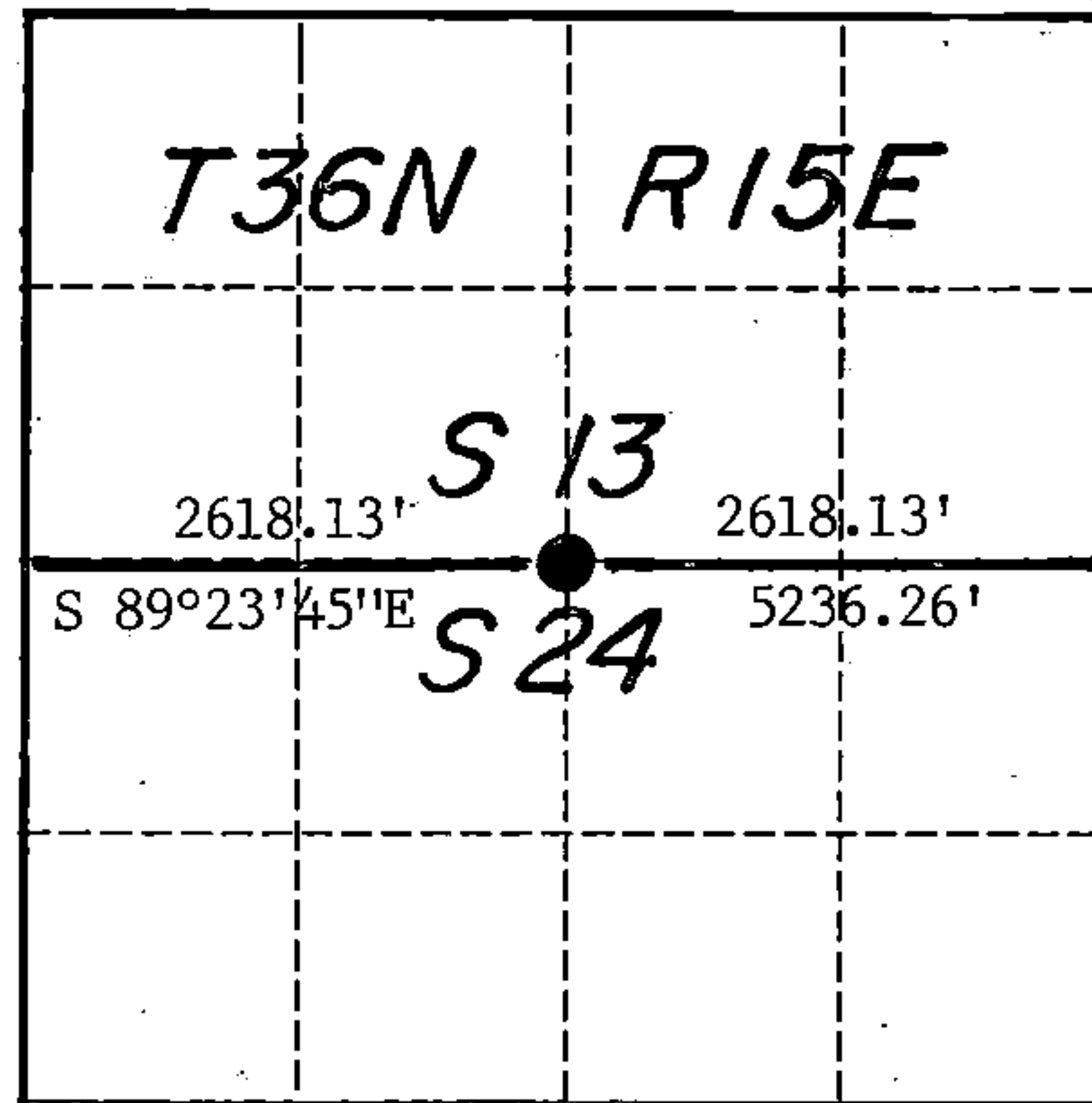


U. S. PUBLIC LAND SURVEY MONUMENT RECORD

INDEX NO. N- 23

orig N-23

Quarter 13 Corner to Section 24 T 36 N, R 15 E
(Section/Quarter)



Show distances and bearings if set by proportional measurement.

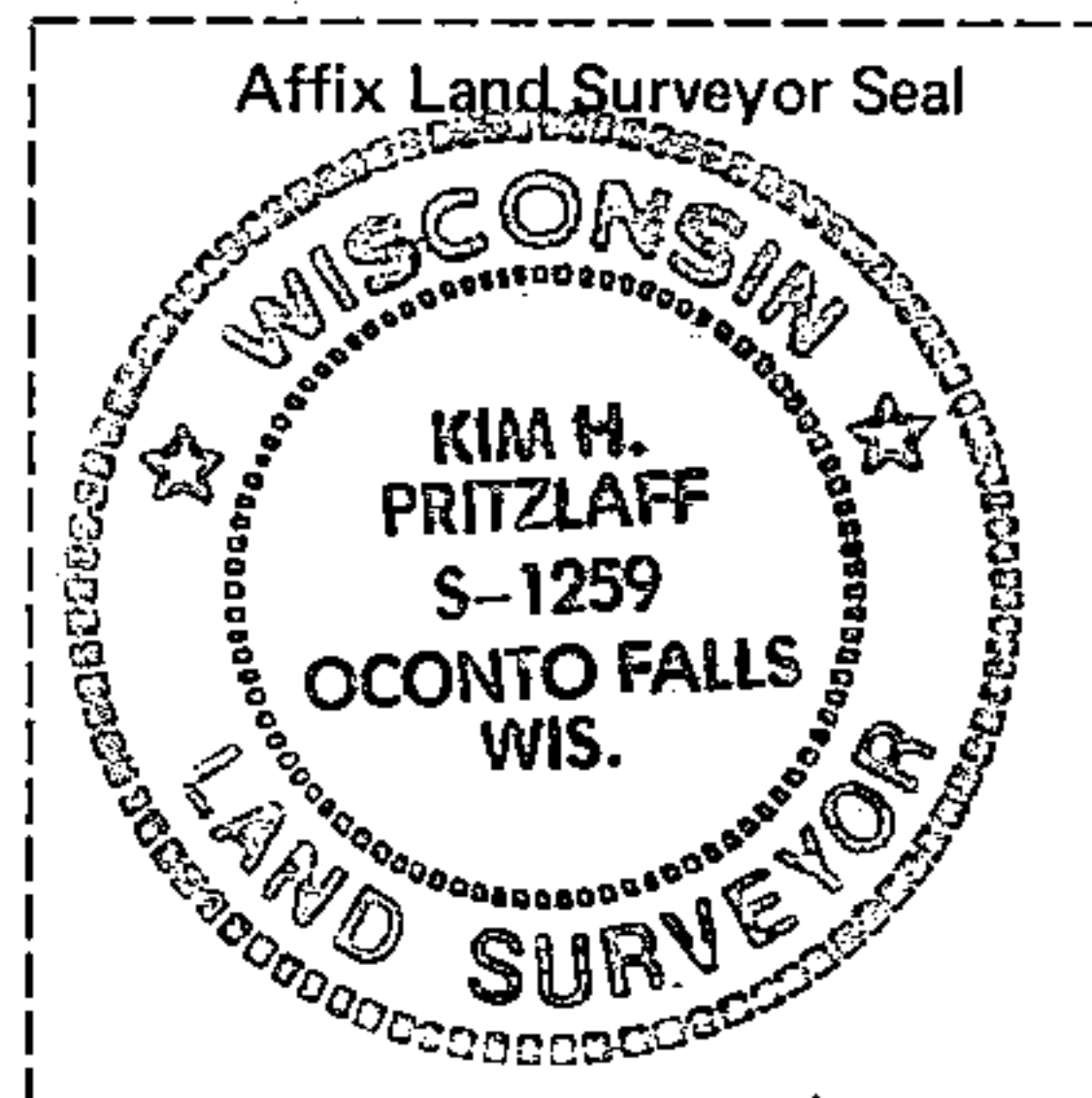
History of original corner establishment, record evidence, monument evidence, occupational evidence, testimonial evidence or any other material evidence, and what you found and how the monument was set.

In 1859 James McBride set a wood post at this corner location and scribed the following BTs: Sugar 14" N 24°W 26 links
Sugar 18" South 7 links

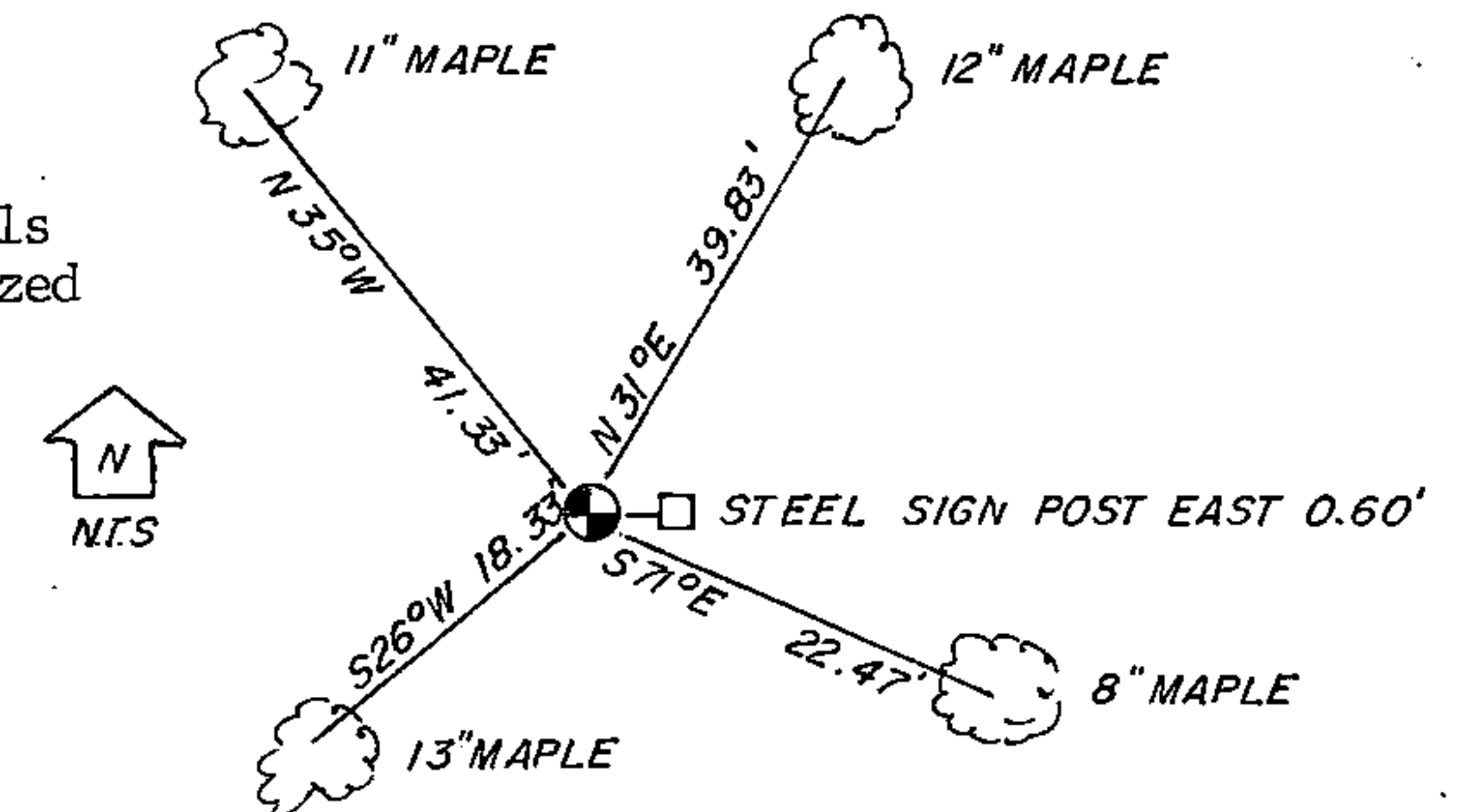
A search area was set up at the single proportionate position for this corner and the BTs and any post evidence was searched. Finding no blazed occupation lines or corner evidence, the corner was determined to be lost and set at single proportionate measurement.

In the plan view drawing below, provide reference ties to at least 4 witness monuments, or, if the location is within a municipality, to at least 2 witness monuments. (Witness monuments shall be made of concrete, natural stone, iron or other equally durable material, except wood other than bearing trees.) Also, show any material discrepancies between the corner restored or re-established and the location of any other previous corner location or occupation.

○ = Corner monument restored.



The corner consists of a 2½"x 36" aluminum post with cap stamped for corner. Distances are to nails driven into the tree centers which trees were blazed and scribed BT. Bearings are magnetic.



I, Kim H Pritzlaff, Contractor with USFS
(Type or print name) certify that the corner location shown on this record was determined by me or under my direction and control and that this U.S. Public Land Survey Monument Record is correct and complete to the best of my knowledge and belief.

Kim H Pritzlaff
Signature

11/30/91
Date

REGISTER'S OFFICE
Forest County, Wis.
Received for record this 300 day
of JANUARY A.D. 19 92 at
9:30 o'clock A. M. and recorded
in Vol Corner Restorations
page N-23

Paul H. Schenck
Register of Deeds

DOCUMENT NUMBER
143542

43615130020