

CERTIFIED LAND CORNER RESTORATION

Index No. J-25

State of Wisconsin }
County of Forest } ss.

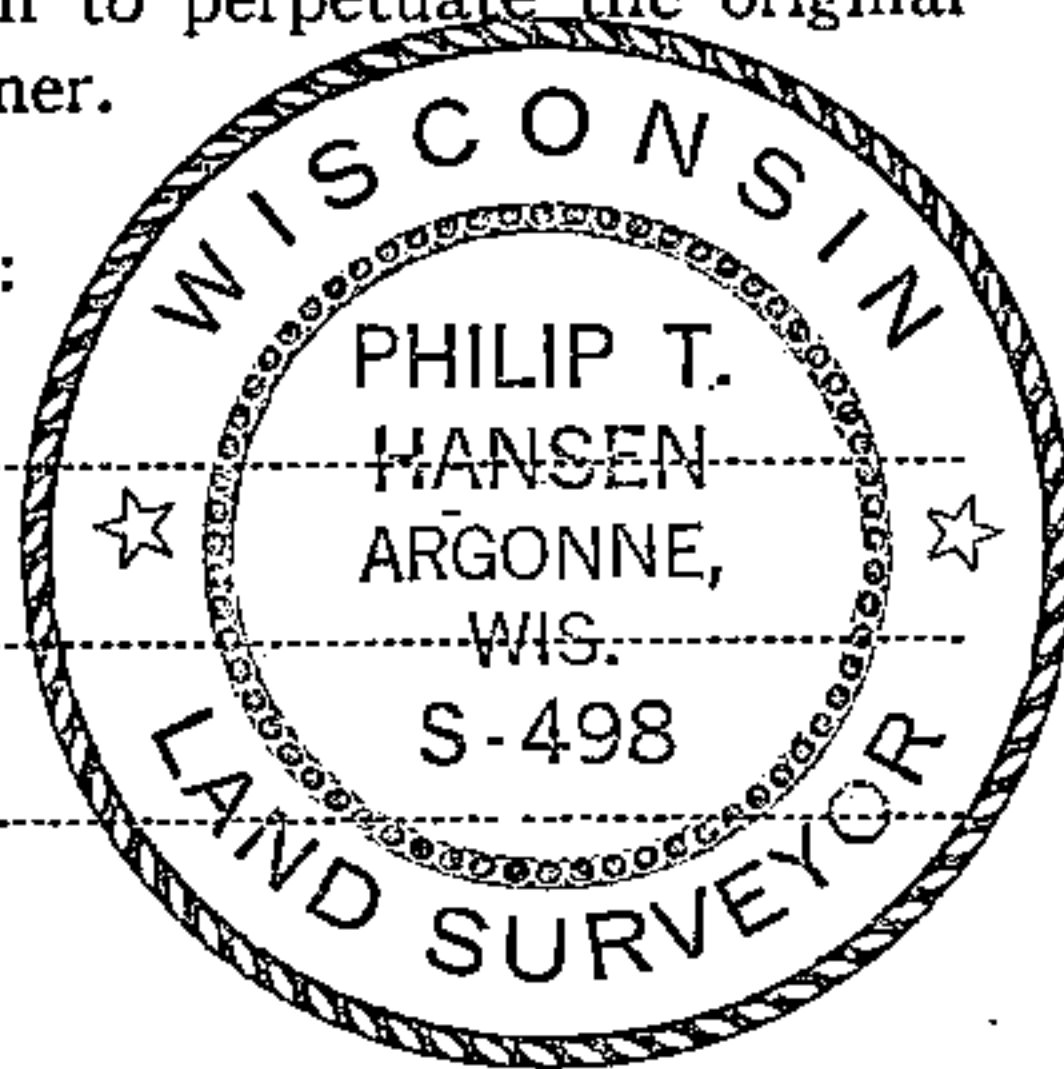
I Philip T. Hansen, do hereby certify that on the 13th day of December, 1976, I found evidence of the Section corner of Sec. 12, 7, 18, 13 Township 36, North, Range 15 & 16 East, Fourth Principal Meridian, as described hereon; and that from this evidence I established a new monument and accessories as described hereon to perpetuate the original location of this corner.

Resident witnesses:

Glen Barker

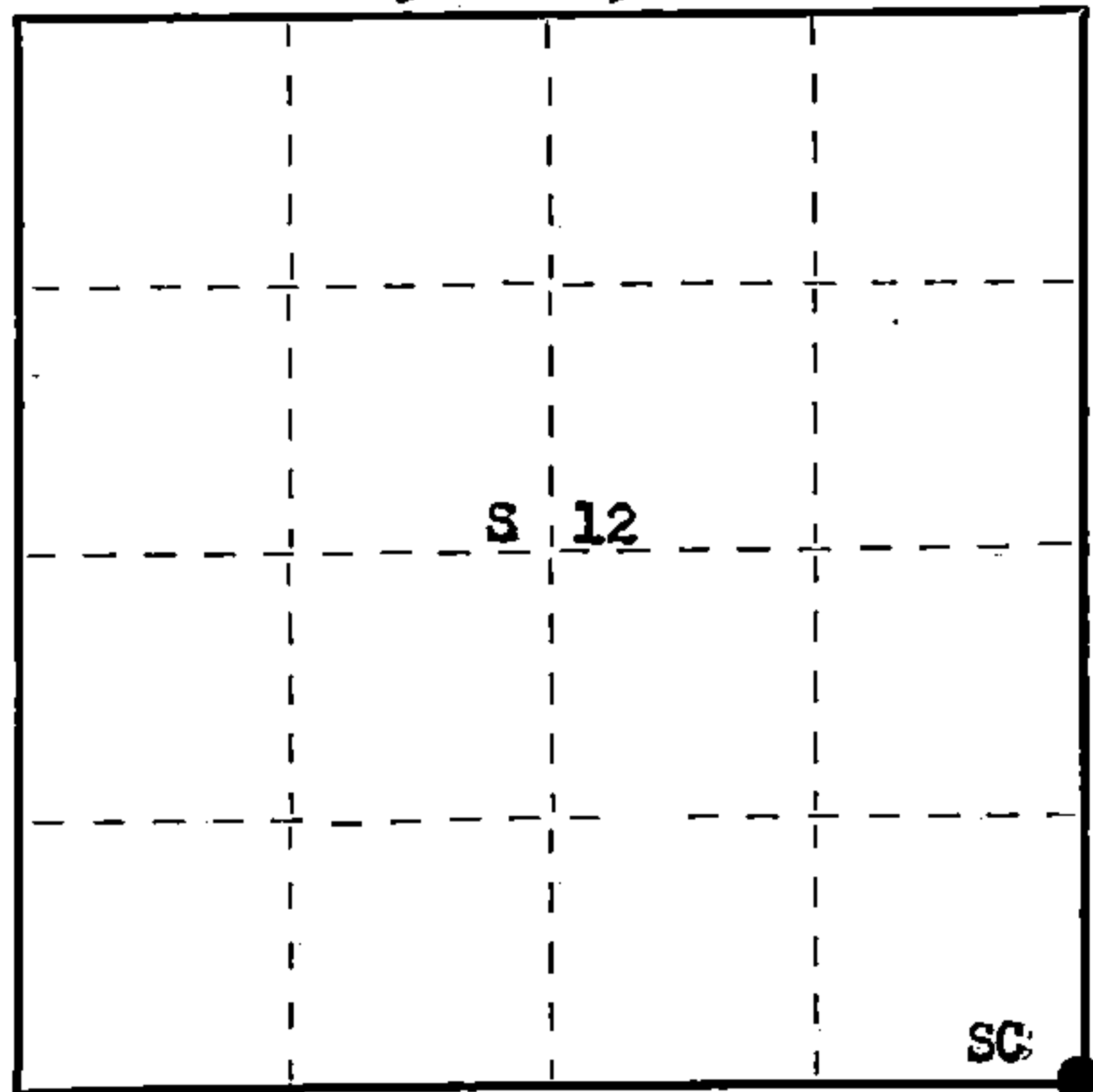
Jim Claflin

Herb Wagoner



FORM 985 R. C. MILLER CO., MILWAUKEE

T36N R15E



○ = Corner monument restored.

History of original corner establishment:

Original Corner established by A. Curtis, Deputy Surveyor, in 1858, from which Aspen 10" bears S 86° W 32 links, Aspen 12" bears N 30° E 12 links, Aspen 12" N 52° W 32 links and Aspen 12" bears S 48° E 17 links.

This corner had been accepted by Ray Leigh, Consolidated forester, and U.S. Forest Service for many years. Old CPI notes mentions 4" squared cedar post on their plats.

Description of corner evidence found:

Recovered 4" squared cedar post, 2 ft. high, not scribed.

This position fits the original marsh calls to the south. Point was still intact with post. Moss around base indicates it had been in this position many years.

Description of monument and accessories I established to perpetuate the original location of this corner.

Replaced wood post with 2 1/2" Berntsen A-1 Federal Monument, aluminum with magnet installed in cap and base. Cap stamped:

- NBTs - White Spruce 10" North 114.4 links, scribed SC BT.
- White Birch 8" S 30° E 29.1 links, scribed SC BT.
- White Birch 7" S 20° W 72.3 links, scribed SC BT.
- White Birch 12" N 81° E 43.8 links, scribed SC BT.

R	T36N	R
15	Sec. 12 7	16
E	13 18	E
S498-1976		

Corner sets 1 chain east of old NE-SW logging road.

Dated at Rhineland, Wis., this 5th day of January, 1977

Signature Philip T. Hansen Title Registered Land Surveyor Registration No. S-498
(County Surveyor, Registered Land Surveyor, or other duly authorized official)

Office of Register of Deeds, County of Forest, I hereby certify that the within instrument was filed in this office for record on the 21st day of January, 1977 at 4:00 o'clock P. M.

Eugene Staszny
(Register of Deeds)

DOCUMENT NUMBER **110885**

By _____ Deputy

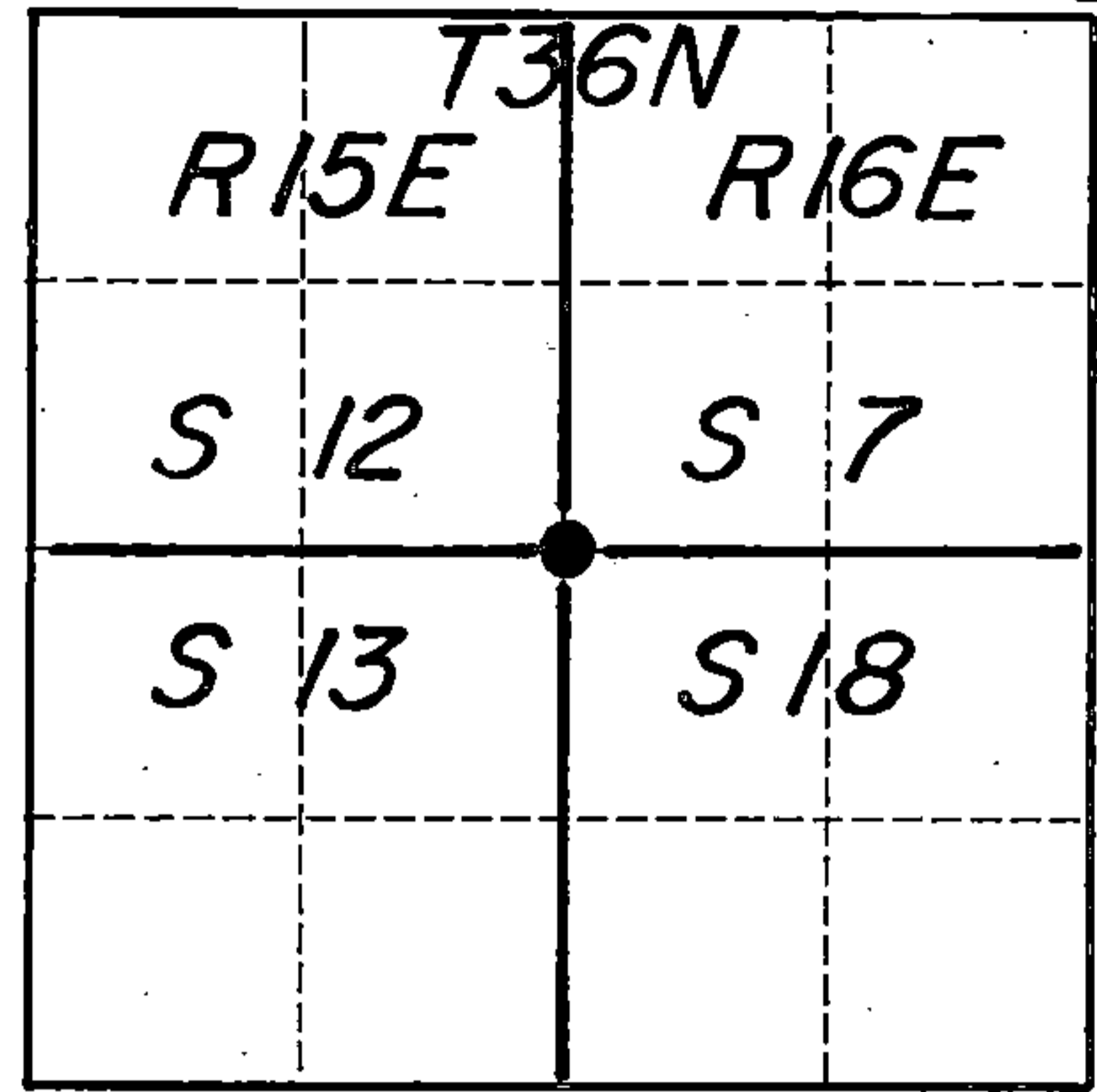
4301512000

U. S. PUBLIC LAND SURVEY MONUMENT RECORD

INDEX NO. J- 25

Section 12 13 36 N, R 15 E
(Section/Quarter) 7 18 11 16

History of original corner establishment, record evidence, monument evidence, occupational evidence, testimonial evidence or any other material evidence, and what you found and how the monument was set.



Show distances and bearings if set by proportional measurement.

In 1857 Artemus Curtis set this corner using a wood post and scribed the following bearing trees:

Aspen	10"	S 86°W	32 links
Aspen	12"	N 30°E	12 links
Aspen	12"	N 52°W	32 links
Aspen	12"	S 48°E	17 links

In 1977 Philip Hansen recovered a 4" wood post which fit marsh calls to the south. He replaced the wood post with an aluminum Forest County monument and marked four bearing trees.

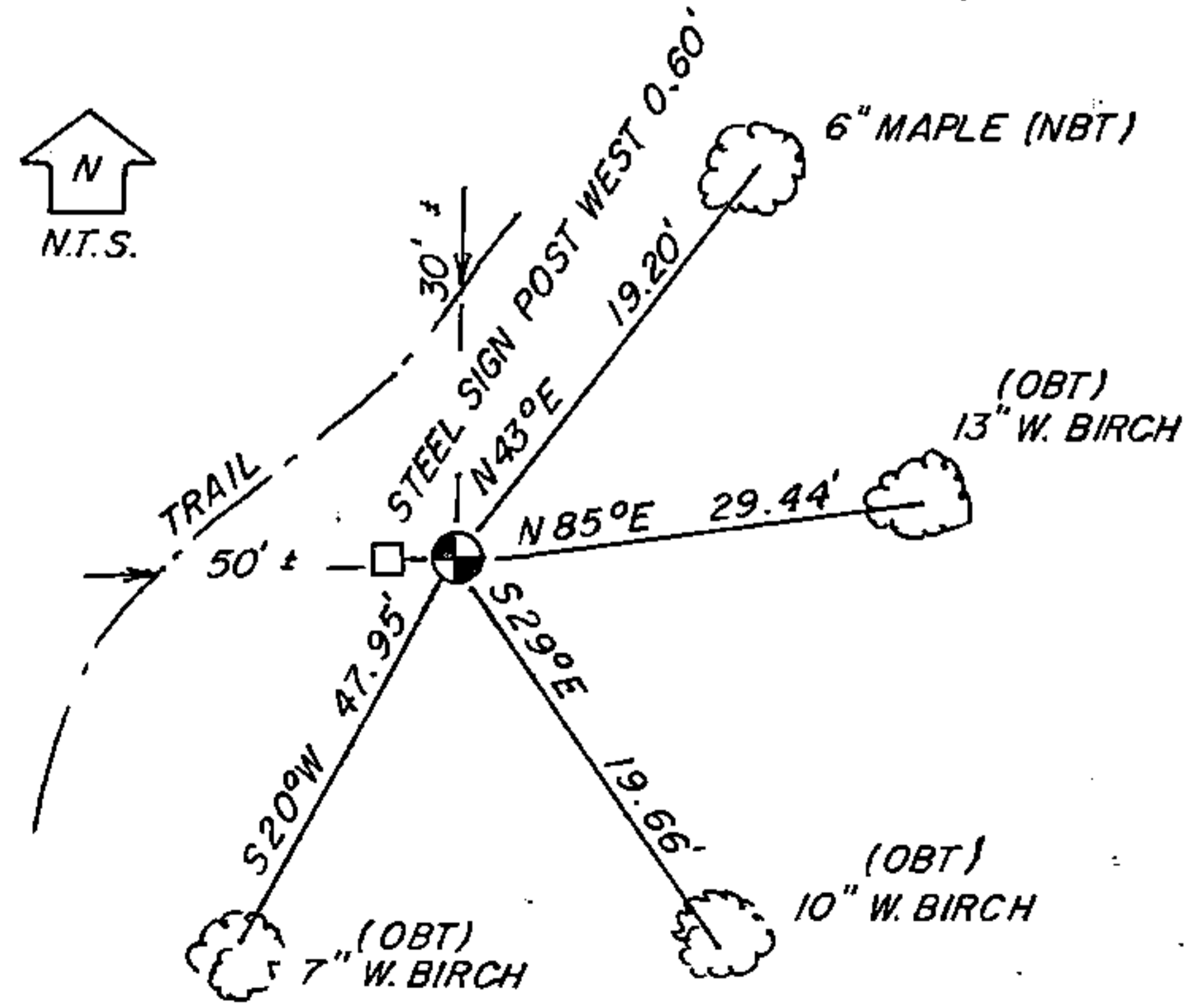
I recovered Hansen's aluminum monument in good stable condition along with his bearing trees. His Spruce BT had to be cut on True Line so I replaced the missing tie with the Maple and steel sign post shown below.

In the plan view drawing below, provide reference ties to at least 4 witness monuments, or, if the location is within a municipality, to at least 2 witness monuments. (Witness monuments shall be made of concrete, natural stone, iron or other equally durable material, except wood other than bearing trees.) Also, show any material discrepancies between the corner restored or re-established and the location of any other previous corner location or occupation.

○ = Corner monument restored.



The corner consists of an aluminum Forest County monument with cap stamped for corner. Distances are to nails driven into the tree centers which were scribed and blazed and painted and signed to USFS standards. Bearings are magnetic.



REGISTER'S OFFICE }
Forest County, Wis. }
Received for record this 340 day
of JANUARY A.D. 19 92 at
9:30 o'clock A.M. and recorded
in Vol. CORNER RESTORATIONS
page J-25
Paul A. Schenck
Register of Deeds

I, Kim H Pritzlaff, Contractor with USFS
(Type or print name) certify that the corner location shown on this record was determined by me or under my direction and control and that this U.S. Public Land Survey Monument Record is correct and complete to the best of my knowledge and belief.

Kim H Pritzlaff
Signature

11/30/91
Date

DOCUMENT NUMBER
143536

4351512-000