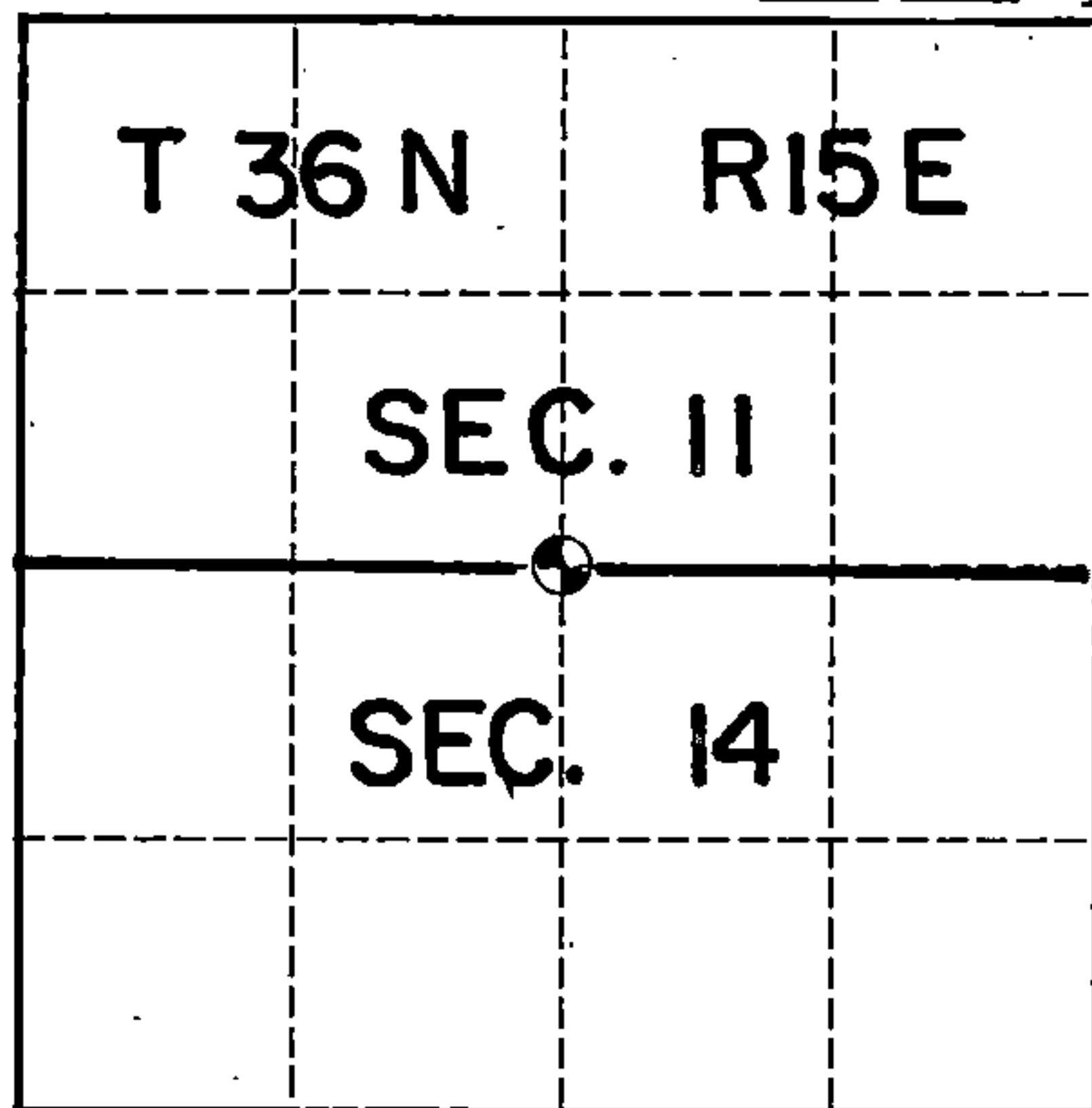


OK J-19

U. S. PUBLIC LAND SURVEY MONUMENT RECORD

INDEX NO. J-19

Quarter _____ Corner to Section 11 14 T36N, R15E
(Section/Quarter)



Show distances and bearings if set by proportional measurement.

○ = Corner monument restored.



I, Kim H Pritzlaff, Contractor for USFS
 (Type or print name) certify that the corner location shown on this record was determined by me or under my direction and control and that this U.S. Public Land Survey Monument Record is correct and complete to the best of my knowledge and belief.

Kim H. Pritzlaff
 Signature

11/30/91
 Date

History of original corner establishment, record evidence, monument evidence, occupational evidence, testimonial evidence or any other material evidence, and what you found and how the monument was set.

In 1859, Government contract surveyor, James McBride, set a wood post at this corner location using the following bearing trees:

Fir 8" N 17°W 24 links
 Fir 10" S 28°W 19 links

In 1915, J. Melendy resurveyed Section 11 and re-established this corner position with a 4"x4" Elm post and scribing the following bearing trees:

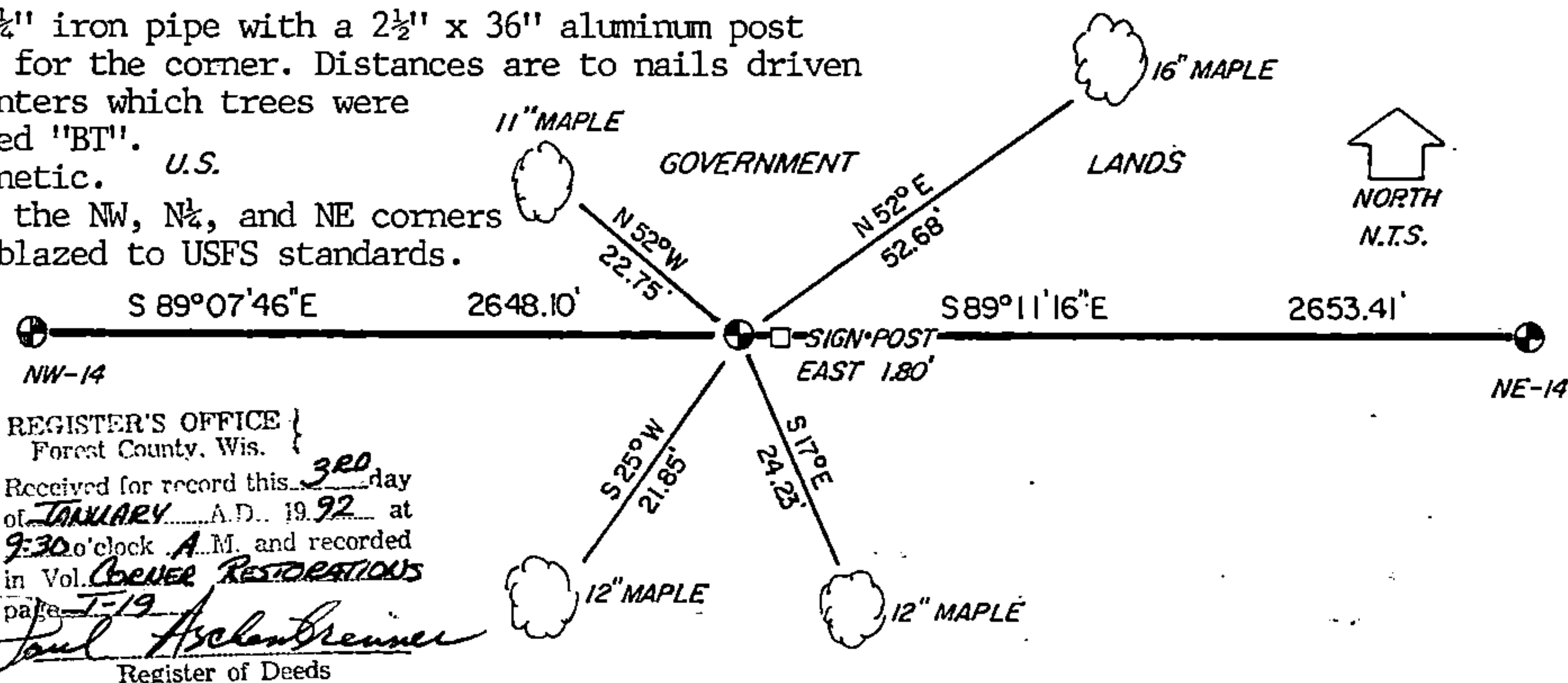
Pine 20" N 19°E 67.4 links
 Elm 6" N 28½°W 27.25 links
 Pine 24" S 74½°E 75.33 links
 Elm 8" S 73°W 30.75 links

Timber cruiser notes of the old Connor Co. noted an iron pipe in a mound of stone which had been kept up for years as the corner.

Found a 1½" iron pipe in mound of stones in center of old blazed trees. I located the 20" Pine, now a rotted stump; the 6" Elm, now a dead topped 12" tree; the 24" Pine, now a cut 36" stump; and the 8" Elm now just a stump hole.

In the plan view drawing below, provide reference ties to at least 4 witness monuments, or, if the location is within a municipality, to at least 2 witness monuments. (Witness monuments shall be made of concrete, natural stone, iron or other equally durable material, except wood other than bearing trees.) Also, show any material discrepancies between the corner restored or re-established and the location of any other previous corner location or occupation.

I replaced the 1½" iron pipe with a 2½" x 36" aluminum post with cap stamped for the corner. Distances are to nails driven into the tree centers which trees were blazed and scribed "BT".
 Bearings are Magnetic. U.S.
 The line between the NW, N½, and NE corners was cleared and blazed to USFS standards.



REGISTER'S OFFICE }
 Forest County, Wis.
 Received for record this 30 day
 of JANUARY A.D. 1992 at
9:30 o'clock A.M. and recorded
 in Vol. COVER RESTORATIONS
 page 7-19

Paul Aschenbrenner
 Register of Deeds

DOCUMENT NUMBER

143545

070011519PH