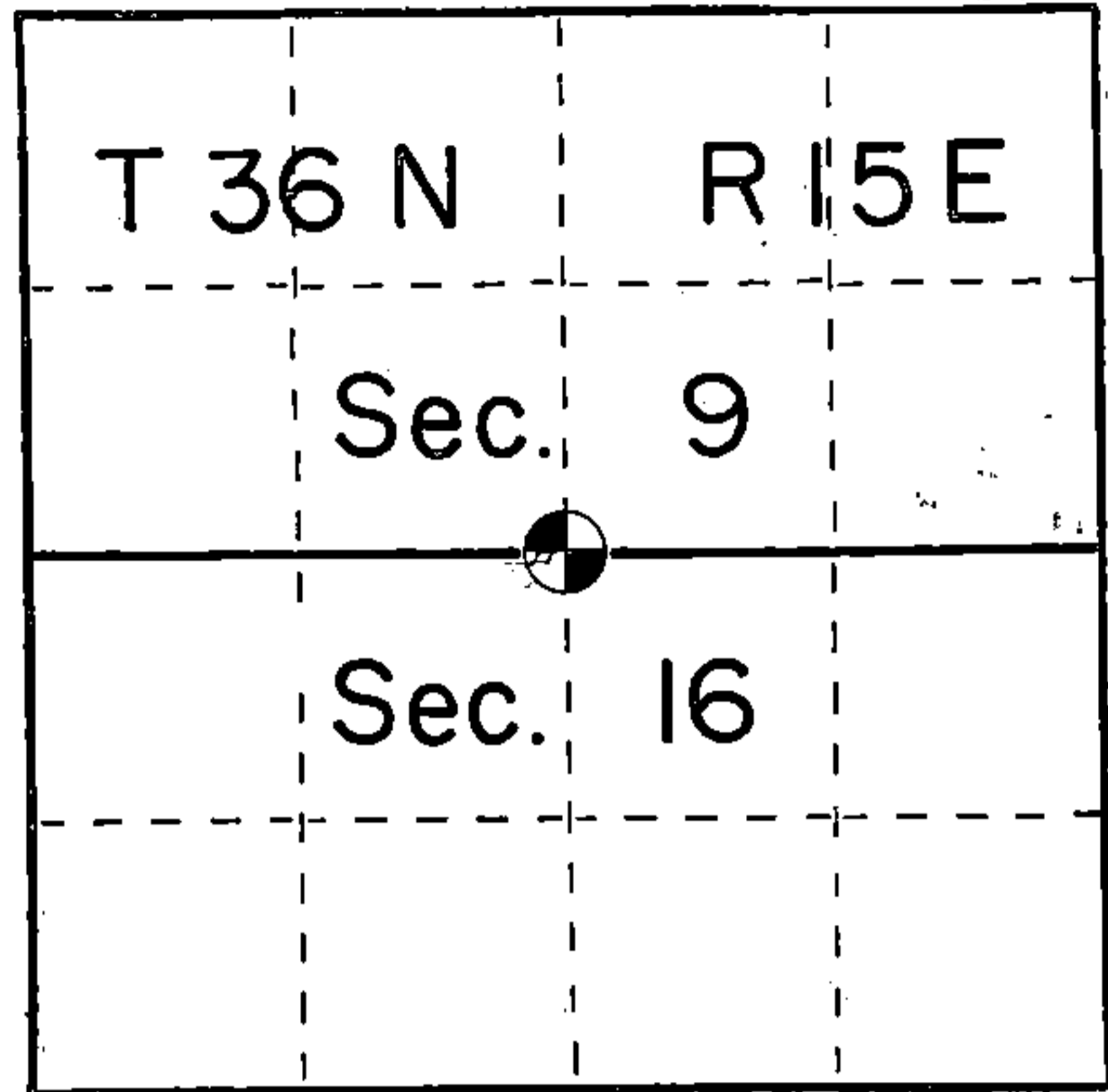


U. S. PUBLIC LAND SURVEY MONUMENT RECORD

INSTRUCTIONS: This record shall show the location of the corner and shall include all of the following nine elements (a through i).

- (a) Identify the corner by reference to the U.S. public land survey system.
- = Corner monument restored.

Quarter corner between Sections 9 and 16,
Township 36 North, Range 15 East,
Forest County, Wisconsin.



- (b) Describe any record evidence, monument evidence, occupational evidence, testimonial evidence or any other material evidence you considered, and whether the monument was found or placed.

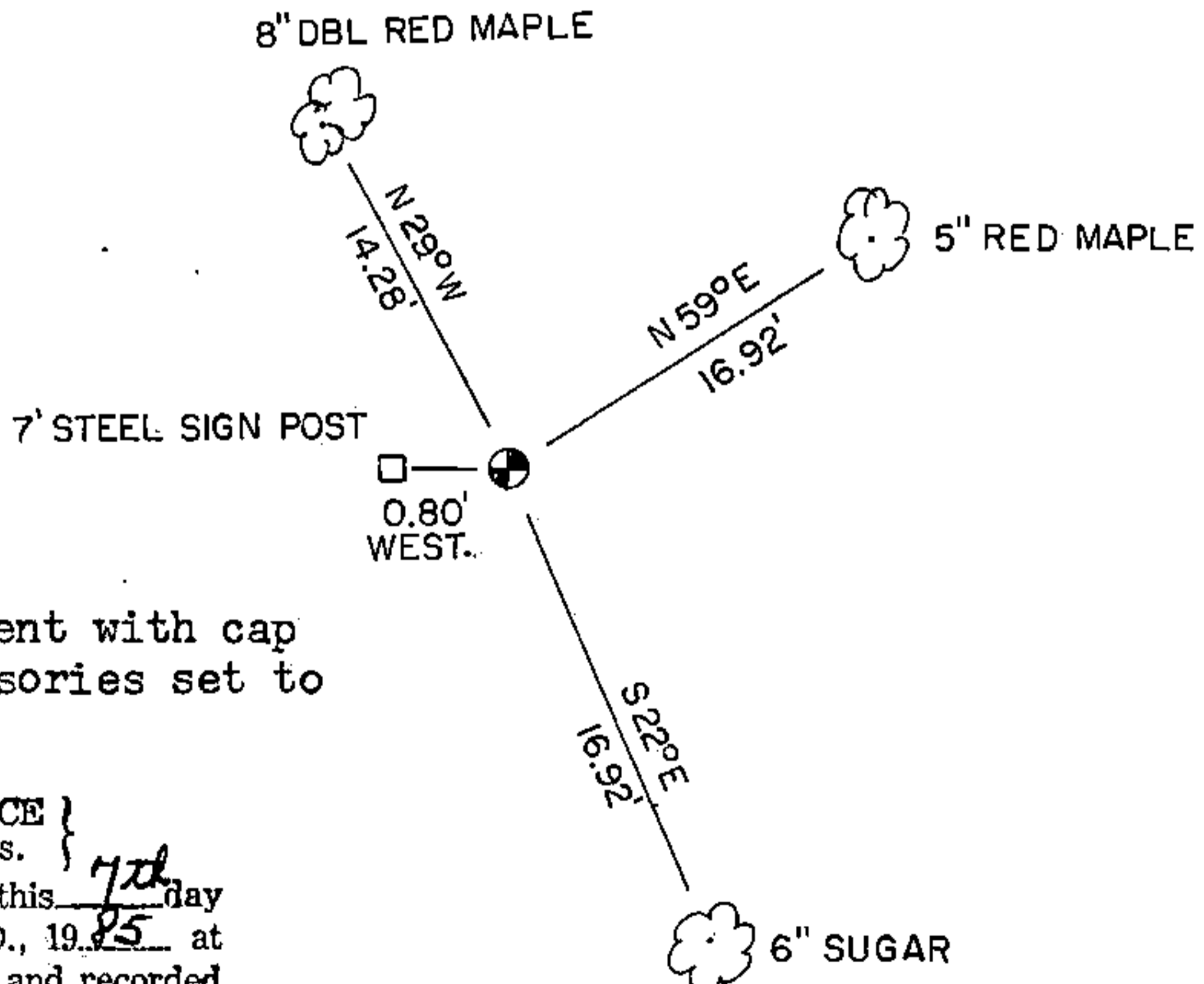
In 1859 James McBride set a wood post at 40.13 chains with:
Hemlock 6" N65W 4 links
Sugar 8" S42E 42 links

In 1911, J Melendy found both bearing trees still living and green. He set a new 4"x4" wood post with the following ties:
Maple 12" N28 1/2 W 21 links
Hemlock 14" S43W 32 5/8 links.

Located a scribed 4" wood post laying down from which the two Hemlock stumps were located; 14" S43W 32 5/8 links and the original 6" N65W 4 links both at ground level.

- (c) In the plan view drawing below, provide reference ties to at least 4 witness monuments, or, if the location is within a municipality, to at least 2 witness monuments. (Witness monuments shall be made of concrete, natural stone, iron or other equally durable material.) Describe witness monuments.

- (d) Show a plan view drawing depicting the relevant monuments and reference ties which is sufficient in detail to enable accurate relocation of the corner monument if the corner monument is disturbed. Indicate north.



Set a 2"x 30" Aluminum monument with cap stamped for corner and accessories set to USFS standards.

REGISTER'S OFFICE }
Forest County, Wis. }
Received for record this 7th day
of August A.D., 1985 at
3:00 o'clock P.M. and recorded
in Vol. CORNER RESTORATIONS
page 5-11
Paul Aschmubrenner
Register of Deeds

(e) Describe any material discrepancy between the location of the corner as restored or reestablished and the location of that corner as previously restored or reestablished by distance and direction. Show the discrepancy on the plan view drawing under (d), above. Show the distances between the corner as previously restored or reestablished and (1) the corner as restored or reestablished, and (2) to at least 2 of the witness monuments shown on the drawing in (d), above.

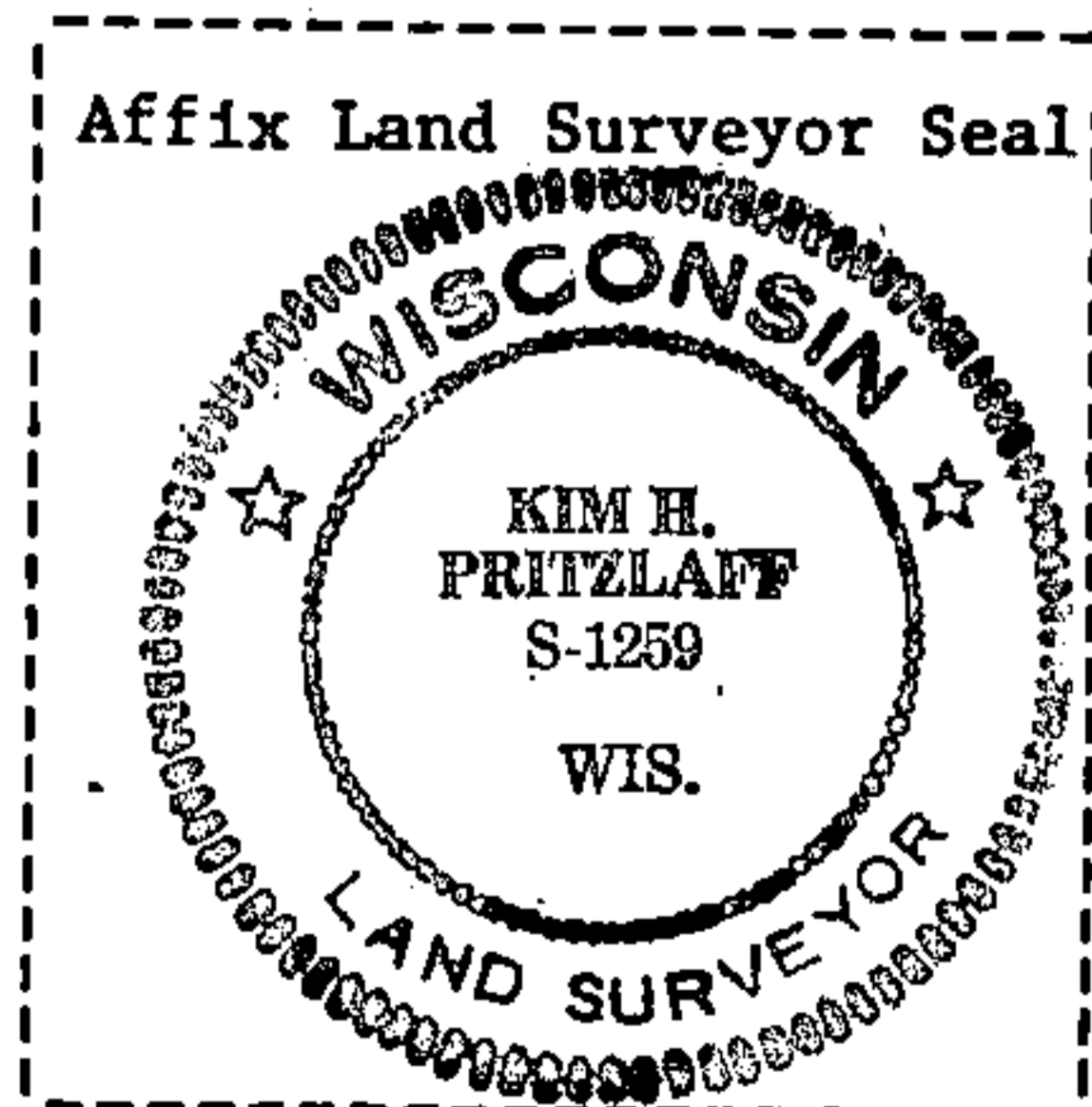
No discrepancy

(f) Was the corner restored through acceptance of (1) an obliterated evidence location, or, (2) a found perpetuated location?

Found perpetuated location

(g&h) Was the corner reestablished through lost corner proportionate methods? If so, show the method, including the directions and distances to other public land survey corners used as evidence or used for proportioning in determining the corner location?

No.



(i) I, Kim H Pritzlaff
(type or print name) certify that the corner location shown on this record was determined by me or under my direction and control and that this U.S. Public Land Survey Monument Record is correct and complete to the best of my knowledge and belief.

Signature

Date

Kim Pritzlaff

5-2-85