

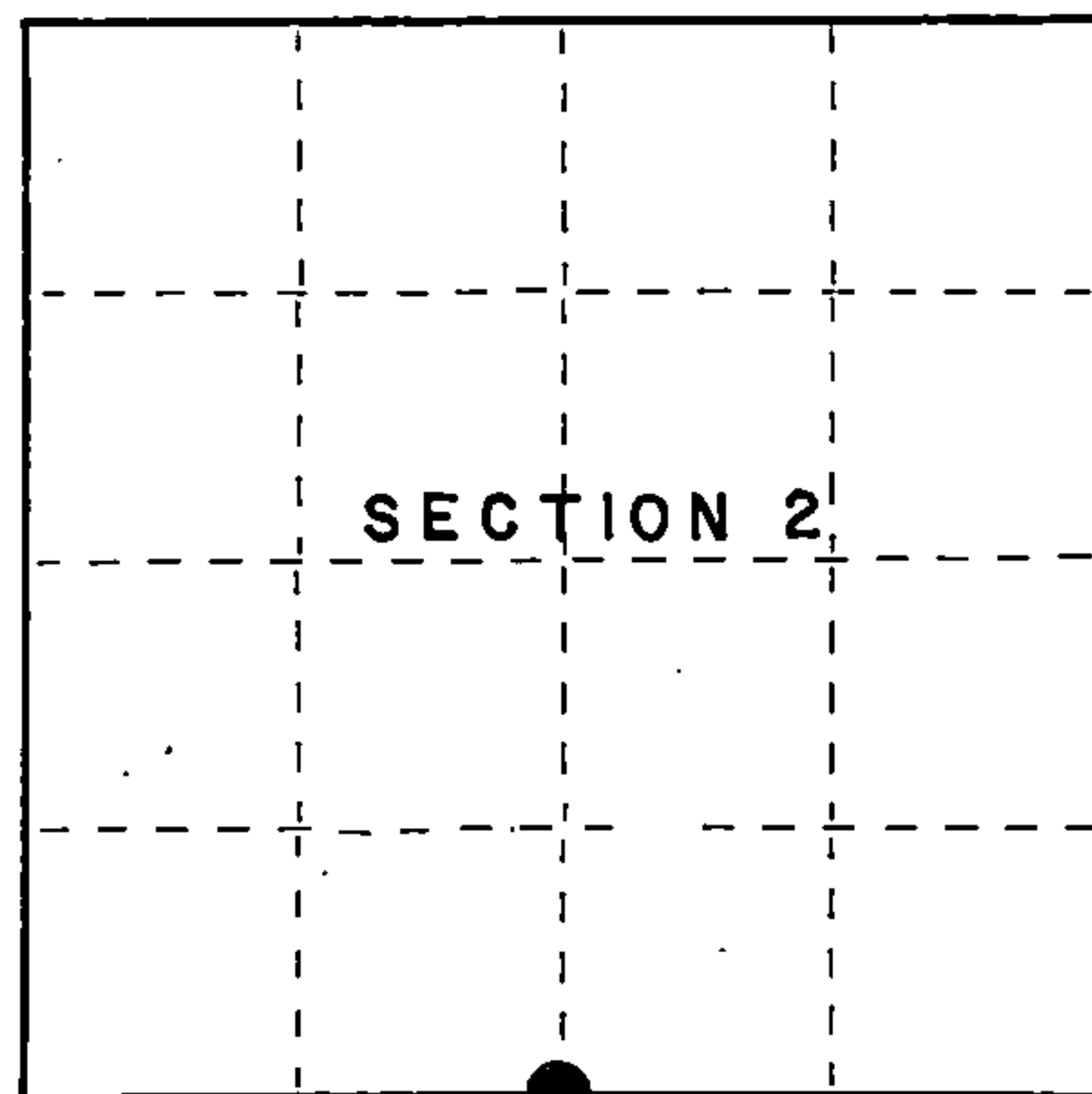
Stock No. 26273

158111

State of Wisconsin }
 County of Forest } ss.

I Gary L. Pisoni, do hereby
 certify that on the 4th day
 of October, 1994, I found
 evidence of the South quarter
 corner of Section 2
 Township 36, North, Range
 15 East, Fourth Principal Meridian,
 as described hereon; and that from this evidence
 I established a new monument and accessories
 as described hereon to perpetuate the original
 location of this corner.

Resident witnesses:



● = Corner monument restored.

CERTIFIED LAND CORNER RESTORATION

Index No. E-19

History of original corner establishment:

Original Government Survey in 1859 by James McBride.
 West corrected between Section 2 and 11, at 40.05 chains, set Quarter Section post
 to Sections 2 and 11, from which the following bear:

Aspen	12"	S 54° E	44 lks.
Sugar	18"	N 56° W	27 lks.

Description of corner evidence found:

No original corner evidence was recovered.

I re-established the corner position at proportionate distance and on line between
 the Southwest and Southeast Section corner of Section 2.

Description of monument and accessories I established to perpetuate the original location of this corner.

At the corner position, set a 2½ inch diameter aluminum pipe monument, 3 feet long,
 3 inches above the ground surface, with an aluminum cap stamped: T36N, R15E, 1/4,
 S-2, S-11, 1994, S-1634; from which the following new blazed and scribed bearing
 trees bear: (all measurements taken to a nail in side of tree)

Red Maple	7"	S 59° E	5.82 feet
Red Maple	5"	S 05° E	11.50 feet
Hemlock	10"	S 38° W	41.43 feet
Hemlock	13"	N 22° W	14.43 feet
Steel sign post		S 85° W	1.10 feet

Dated at Iron River, MI, Wis., this 8th day of April, 1995.

Signature Gary L. Pisoni Title Land Surveyor Registration No. S-1634
 (County Surveyor, Registered Land Surveyor, or other duly authorized official)

Office of Register of Deeds, County of Forest, I hereby certify that the within
 instrument was filed in this office for record on the 20th day of March, 1997
 at 1:30 o'clock P. M.

(Register of Deeds)

By [Signature] Deputy

43015020020

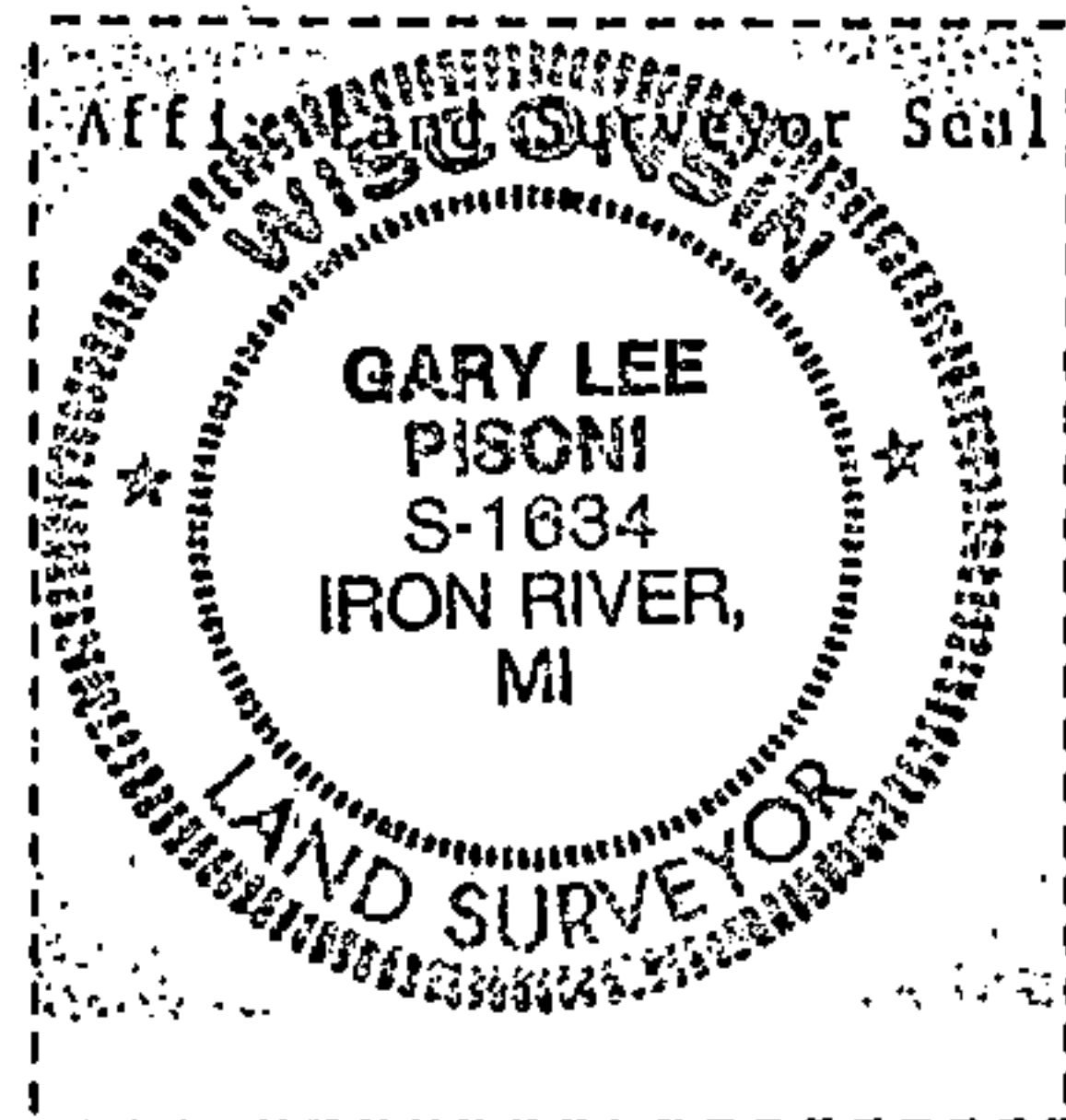
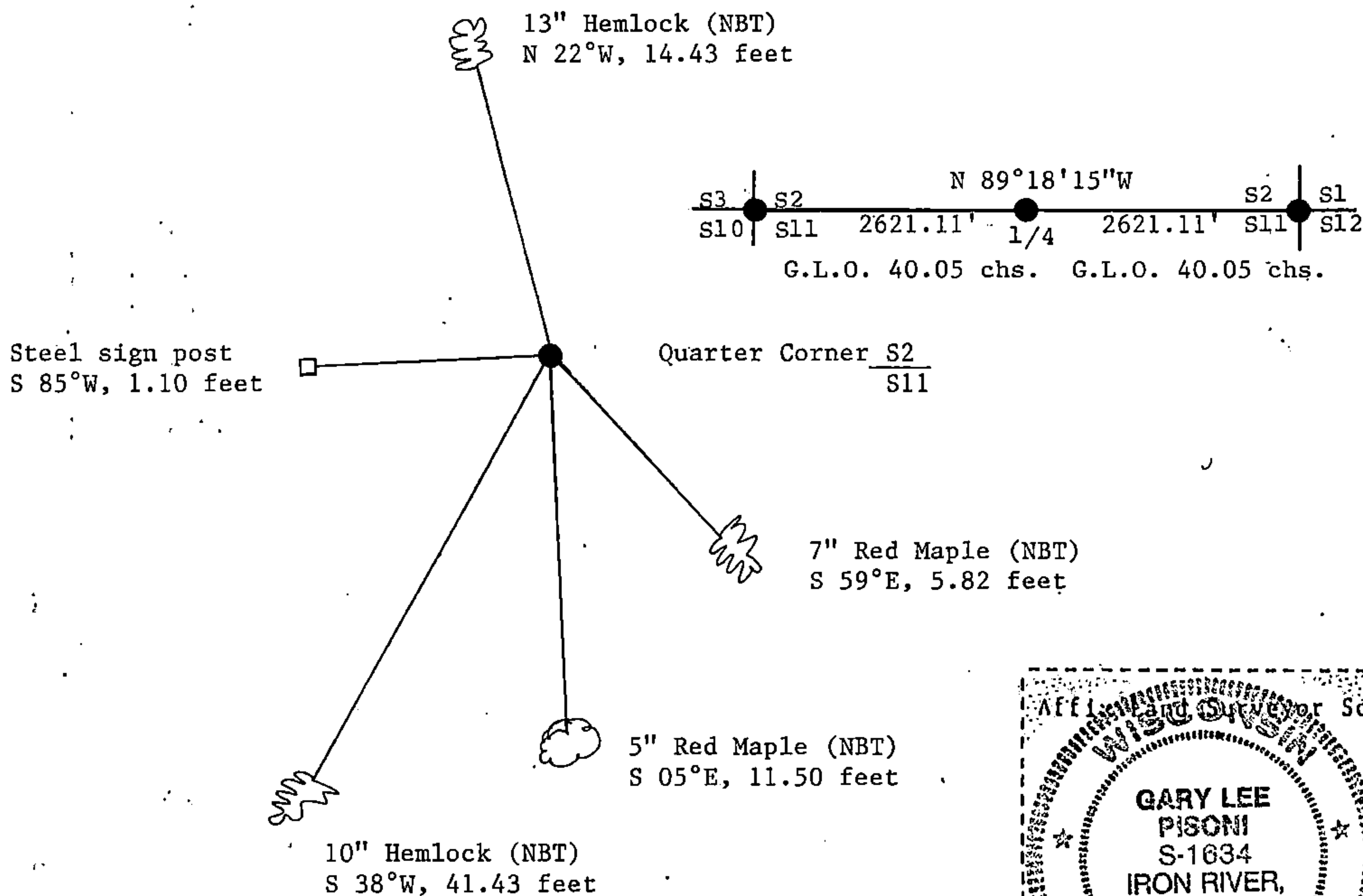
(e) Describe any material discrepancy between the location of the corner as restored or reestablished and the location of that corner as previously restored or reestablished by distance and direction. Show the discrepancy on the plan view drawing under (d), above. Show the distances between the corner as previously restored or reestablished and (1) the corner as restored or reestablished, and (2) to at least 2 of the witness monuments shown on the drawing in (d), above.

None

(f) Was the corner restored through acceptance of (1) an obliterated evidence location, or, (2) a found perpetuated location?

Restored through lost corner proportionate methods.

(g/h) Was the corner reestablished through lost corner proportionate methods? If so, show the method, including the directions and distances to other public land survey corners used as evidence or used for proportioning in determining the corner location?



(i) 1. Gary L. Pisoni
(type or print name) certify that the corner location shown on this record was determined by me or under my direction and control and that this U.S. Public Land Survey Monument Record is correct and complete to the best of my knowledge and belief.

Signature

Date

Survey requested by:

District Ranger

Date