

# CERTIFIED LAND CORNER RESTORATION

State of Wisconsin }  
County of Forest } ss.

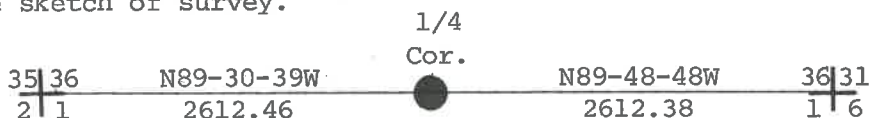
I Jean F. Resvick, do hereby certify that on the 4th day of November, 19 76, I ~~found evidence of the~~ established the North quarter corner of Section 1 Township 35 North, Range 14 East, Fourth Principal Meridian, as described hereon; and that from this evidence I established a new monument and accessories as described hereon to perpetuate the ~~original~~ location of this corner:

Description of original monument and accessories and subsequent restorations:

Surveyed in 1857 by Alfred Millard  
40 chains west between Section 1 and 36 set post  
Sugar 18, N65W, 32 links  
Yellow Birch 30, S73E, 10 links  
13 chains east enter swamp bears N & S  
18 chains east leave swamp bears N & S

Description of corner evidence found:

Black top road east and west, fence north.  
Proportional distance between section corners falls at fence north and north of center line road. Moving the proportional position on the cardinal direction south to center of road places the corner at the center of east, west road and fence north. See sketch of survey.

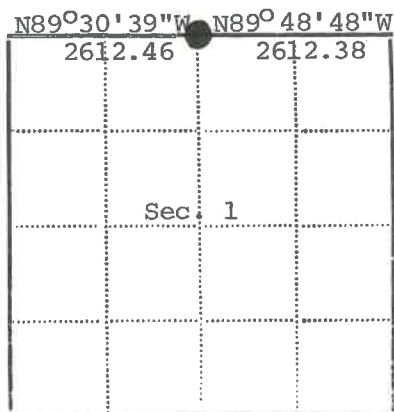


Description of monument and accessories I established to perpetuate the location of this corner:

At the corner thus located set a 2 inch inside diameter galvanized iron pipe, 3 feet long, filled with concrete, 1 foot below the surface of the black top, with brass cap stamped: T36N, R14E, 1/4, S36, S1, T35N, 1976, S-802

From which the following bear:

Maple 7", N41E, 62.41 feet  
Maple 6, S28W, 57.95 feet  
Southeast corner of house bears N42W, 90.46 feet.



● - Corner monument restored  
□ -

Resident witnesses.....

Dated at Rhineland Wisconsin, this 14th day of January 19 77....

Signature Jean F. Resvick Title Land Surveyor  
(County Surveyor, Registered Land Surveyor, or other duly authorized official)

Surveyors Registration No. S-802

Office of Register of Deeds County of Forest

I hereby certify that the within instrument was filed in this office for record on the 13th day of May, 19 77, and was filed in Book No. .... Page No. .... of County Records.

Signature Eugene Stagny Title Register of Deeds

Township 35 North, Range 14 East, Section 1, Index No. A-23, Page No. ....

43614300020

A 23