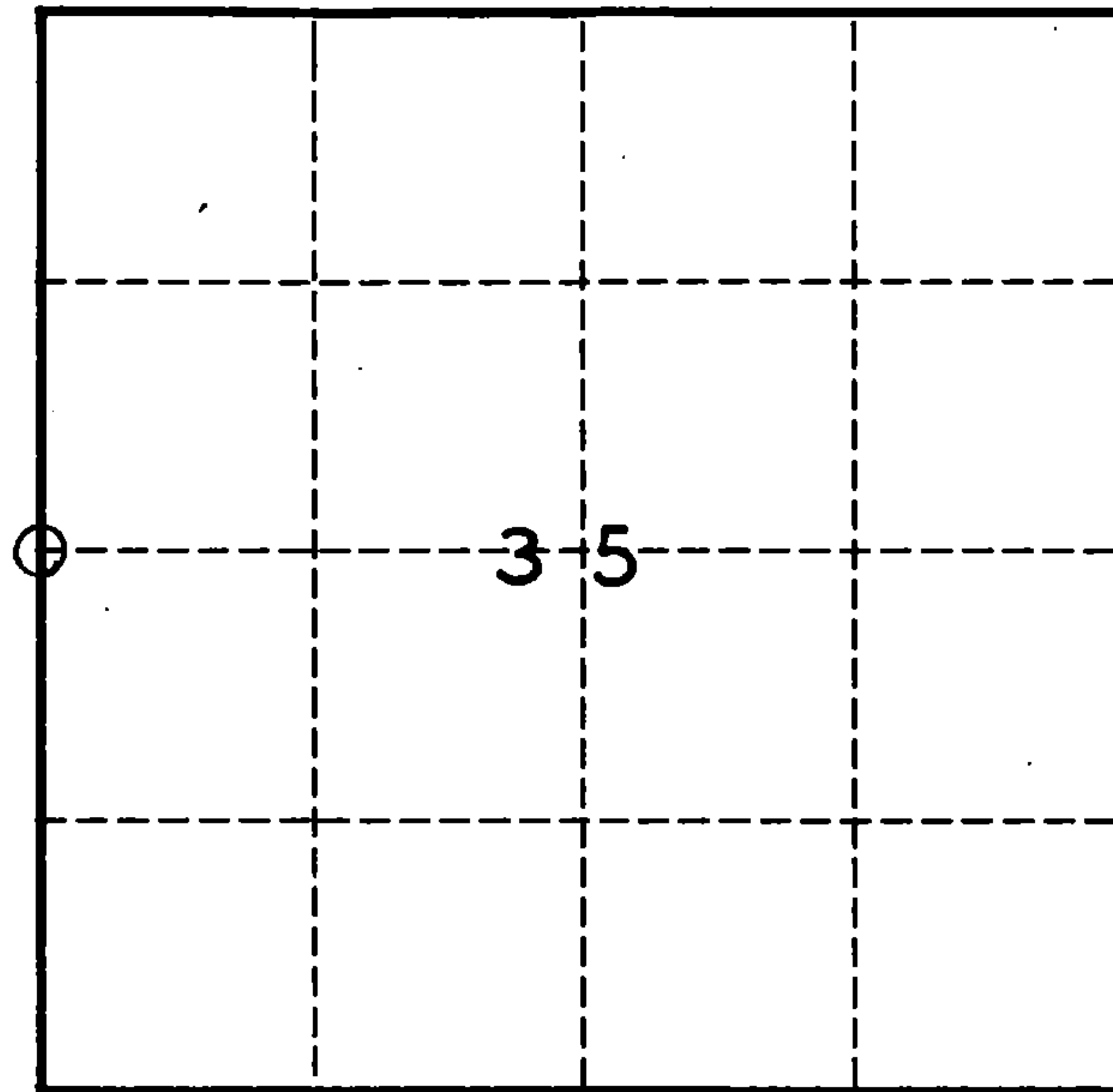


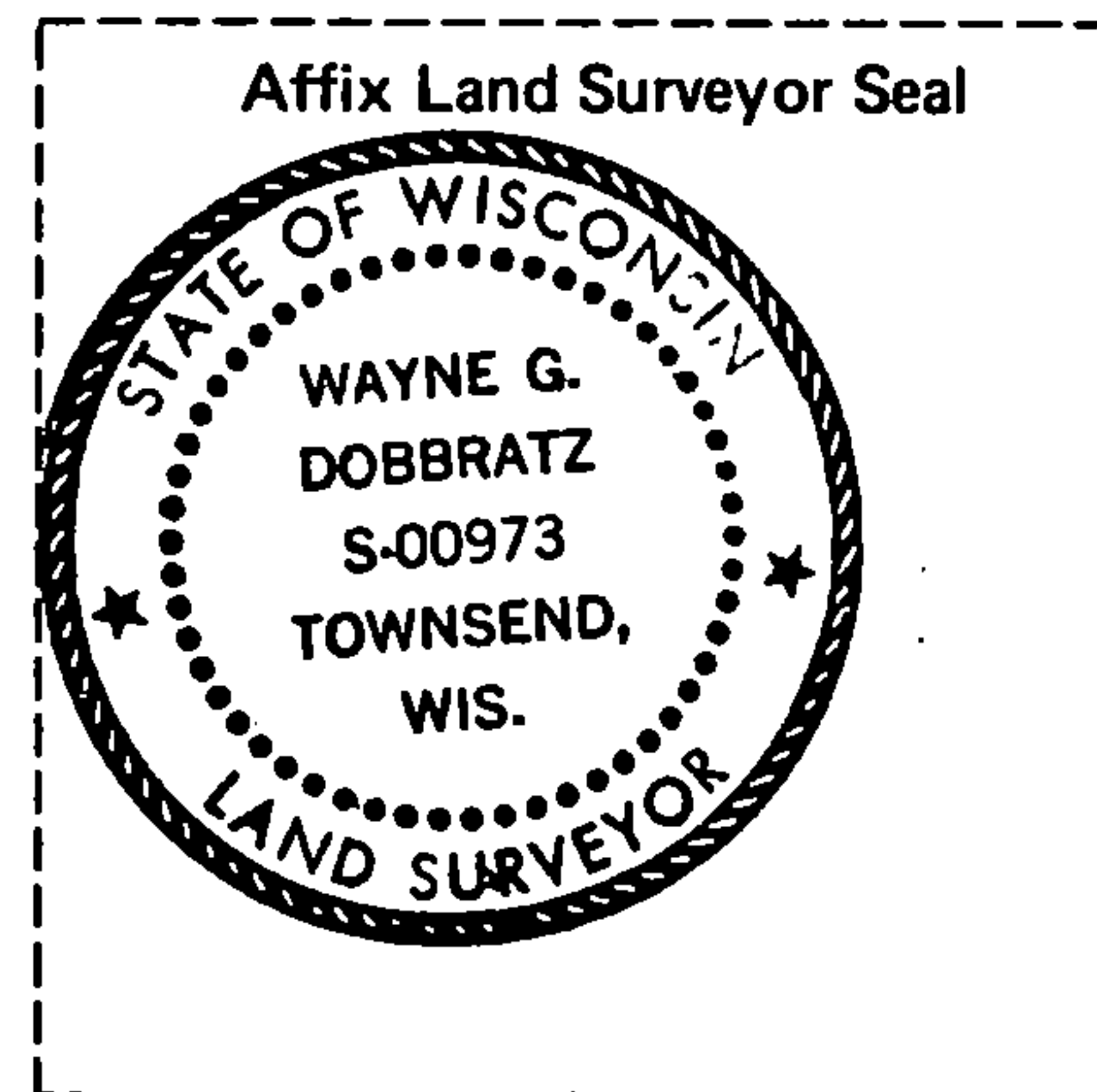
# U. S. PUBLIC LAND SURVEY MONUMENT RECORD

INDEX NO. X-17

W.  $\frac{1}{4}$  Corner to Section 35 36 N, R 14 E  
(Section/Quarter)



○ = Corner monument restored.



I, WAYNE G. DOBBRATZ  
(Type or print name) certify that the corner location shown on this record was determined by me or under my direction and control and that this U.S. Public Land Survey Monument Record is correct and complete to the best of my knowledge and belief.

Wayne G. Dobbratz  
Signature

History of original corner establishment, record evidence, monument evidence, occupational evidence, testimonial evidence or any other material evidence, and what you found and how the monument was set.

ORIGINAL SURVEY BY McBRIDE IN 1859, NORTH BETWEEN SEC'S. 34 & 35  
40.0 CHS. SET  $\frac{1}{4}$  POST. BIR. 14" S. 53 E. 37 LKS. BIR. 16" N. 47 W. 7 LKS.

FOUND  $1\frac{1}{2}$ " IRON PIPE AT  $\frac{1}{4}$  CORNER AS USED IN ADJACENT SURVEY'S  
SET FOREST CO. MONUMENT AT THIS POSITION (ALUM. CONST.)

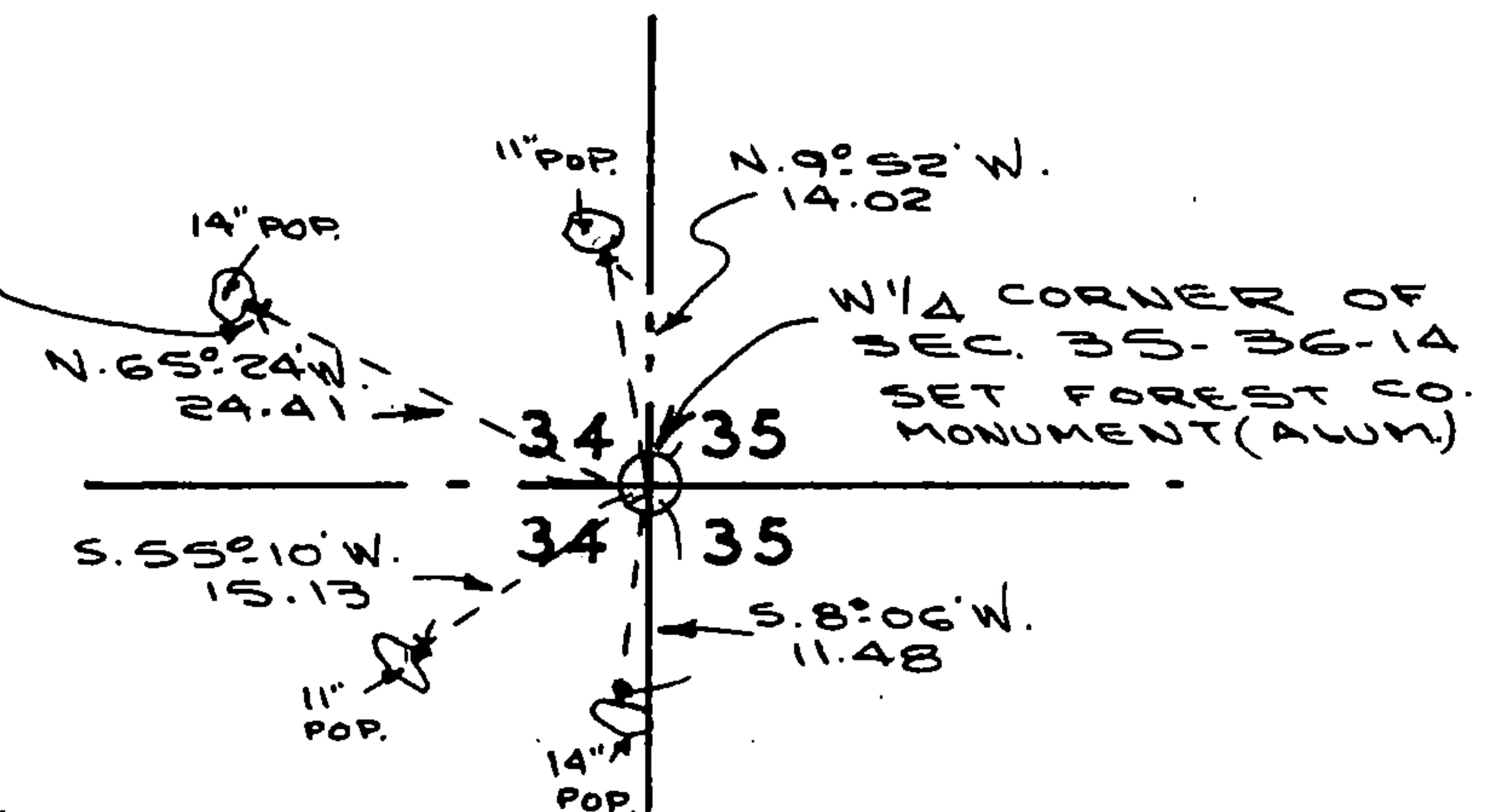
In the plan view drawing below, provide reference ties to at least 4 witness monuments, or, if the location is within a municipality, to at least 2 witness monuments. (Witness monuments shall be made of concrete, natural stone, iron or other equally durable material, except wood other than bearing trees.) Also, show any material discrepancies between the corner restored or re-established and the location of any other previous corner location or occupation.

NOTE! 60p SPIKES SET IN  
BEARING TREES

REGISTER'S OFFICE  
Forest County, WI

Received for record this 26 th day  
of July A.D., 19 89  
at 8:30 o'clock A.M. and  
recorded in Vol. X-17 of records

Paul Achenbrenner  
REGISTER



C.S.M.

V. 2 P. 58

DOCUMENT NUMBER

137871

432614342000