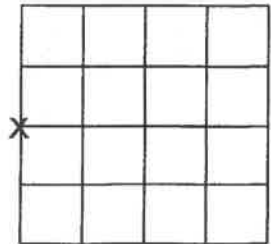


U.S. PUBLIC LAND SURVEY MONUMENT RECORD

Note: This form is intended and designed to fulfill all requirements of Wisconsin Administrative Code, Chapter A-E 7.08 U.S. Public Land Survey Monument Record (3)(a)(b)(c)(d)(e)(f)(g)(h)(i). An additional sheet may be added to if necessary to conform with said requirements.

(a) Corner Location: Township 36 North
Range 14 East or West

Town of: Laona
Forest County, Wisconsin



Section 34

(b)(f)(g)(h) Description of monument found at this corner and if it was accepted, state all evidence (material, testimonial, occupational, plats, records, other monuments) used as a basis for accepting. If not accepted or if nothing was found, state evidence used as basis for establishing location. If reestablishment through lost corner proportionate methods, indicate all monuments, distances and directions used to establish. Indicate type of monument found or set and sign post.

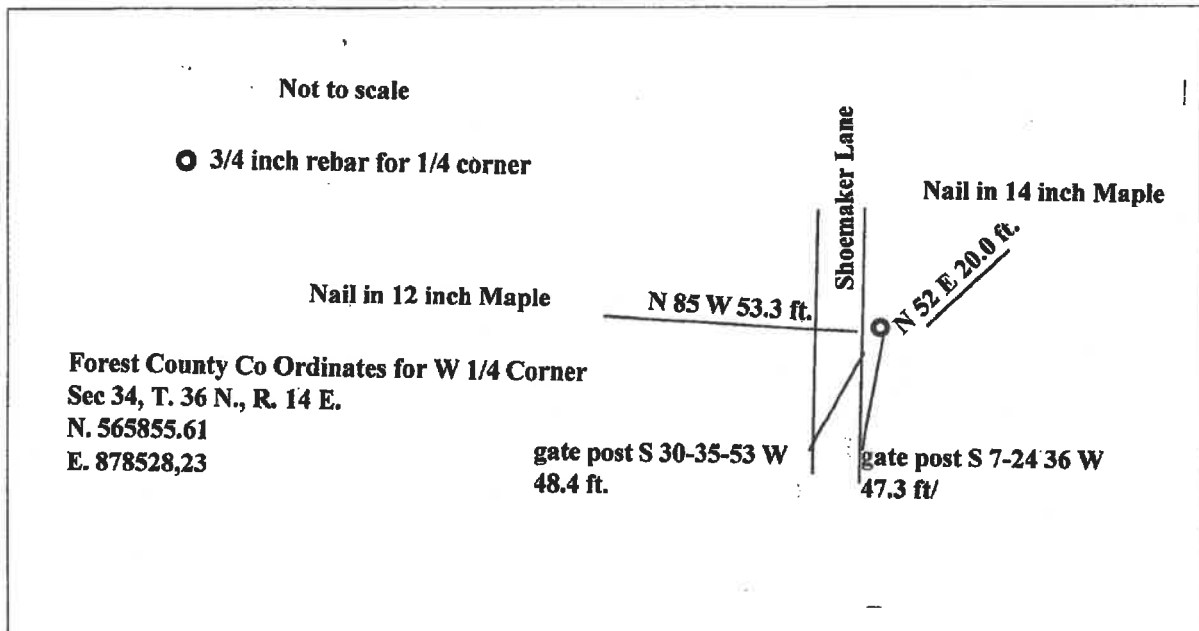
No evidence of original corner was found. Set corner using the NW and SW corners of section 34. NW corner from ties on file and SW corner from iron pipe found. Set 3/4 inch rebar at midpoint between section corners. Corner location matches the cutting lines east and west.

FOREST COUNTY, WI
CORTNEY BRITTEN CLEEREMAN
REGISTER OF DEEDS
RECEIVED FOR RECORD

FEB 26 2019

Time: 10:30 A.M.
Vol.: Corner Restoration
Page Number: X-13

(c)(d)(e) Plan view of corner with ties to at least 4 witness monuments. If in disagreement with previously established corner, show the distances between the two corners and also indicate the ties to the disputed corner.



Index No.

(i) I, Michael Hess, Professional Land Surveyor #S-809
hereby certify that the corner location on this record was determined by me or
under my direction and control and that this U.S. Public Land Survey
Monument Record is correct and complete to the best of my knowledge and
belief.

Signature

Date



X-13

43614332000

1/5/23 re-scanned to reflect correct recording date 2/26/19 - CBI/ROD.