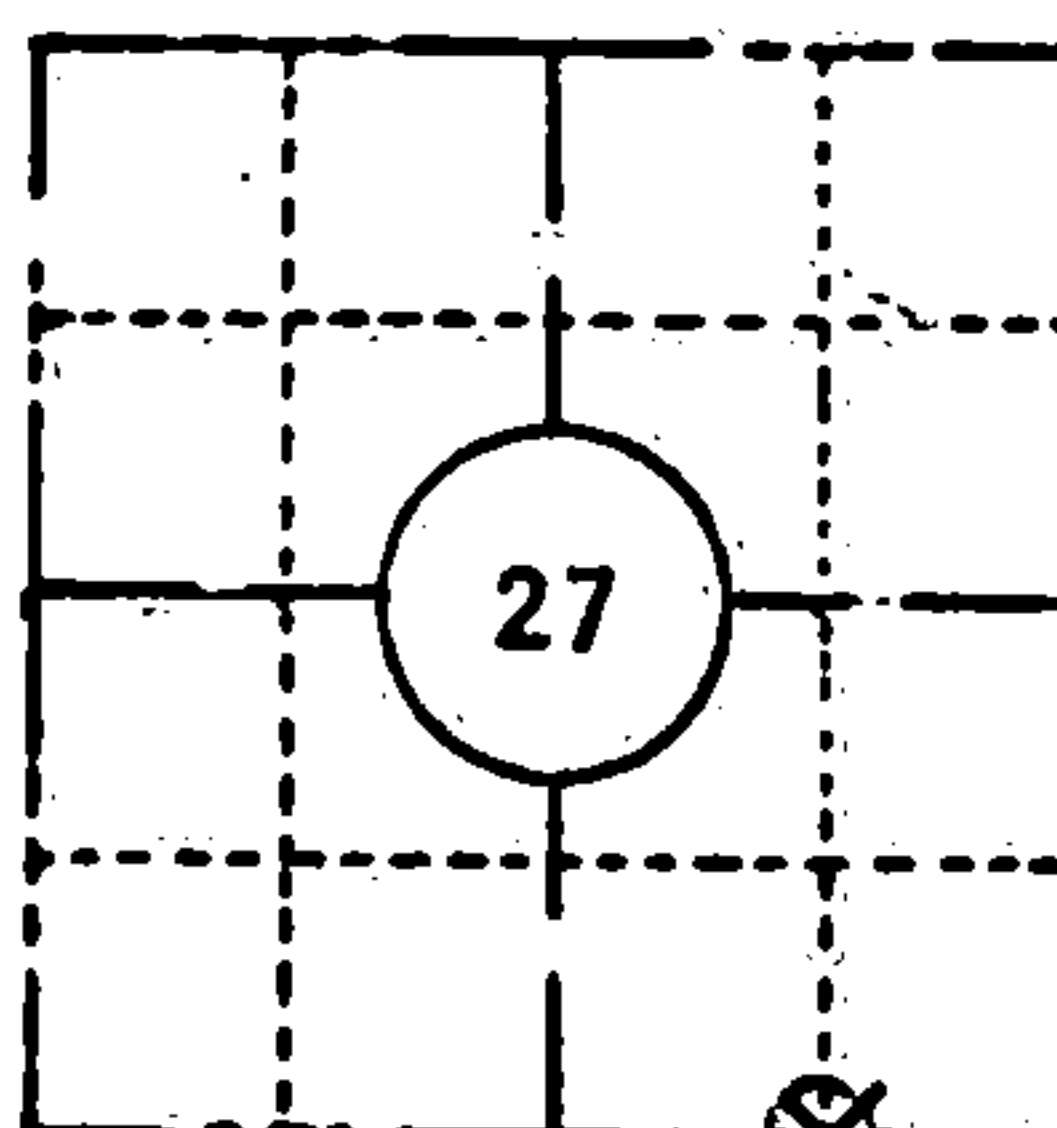


FIELD SURVEY NOTES  
**PRESERVATION OF LANDMARKS**  
(Pursuant to Section 59.635(7) Wisconsin Statutes)

State Highway Commission of Wisconsin  
Form E-D-707-85

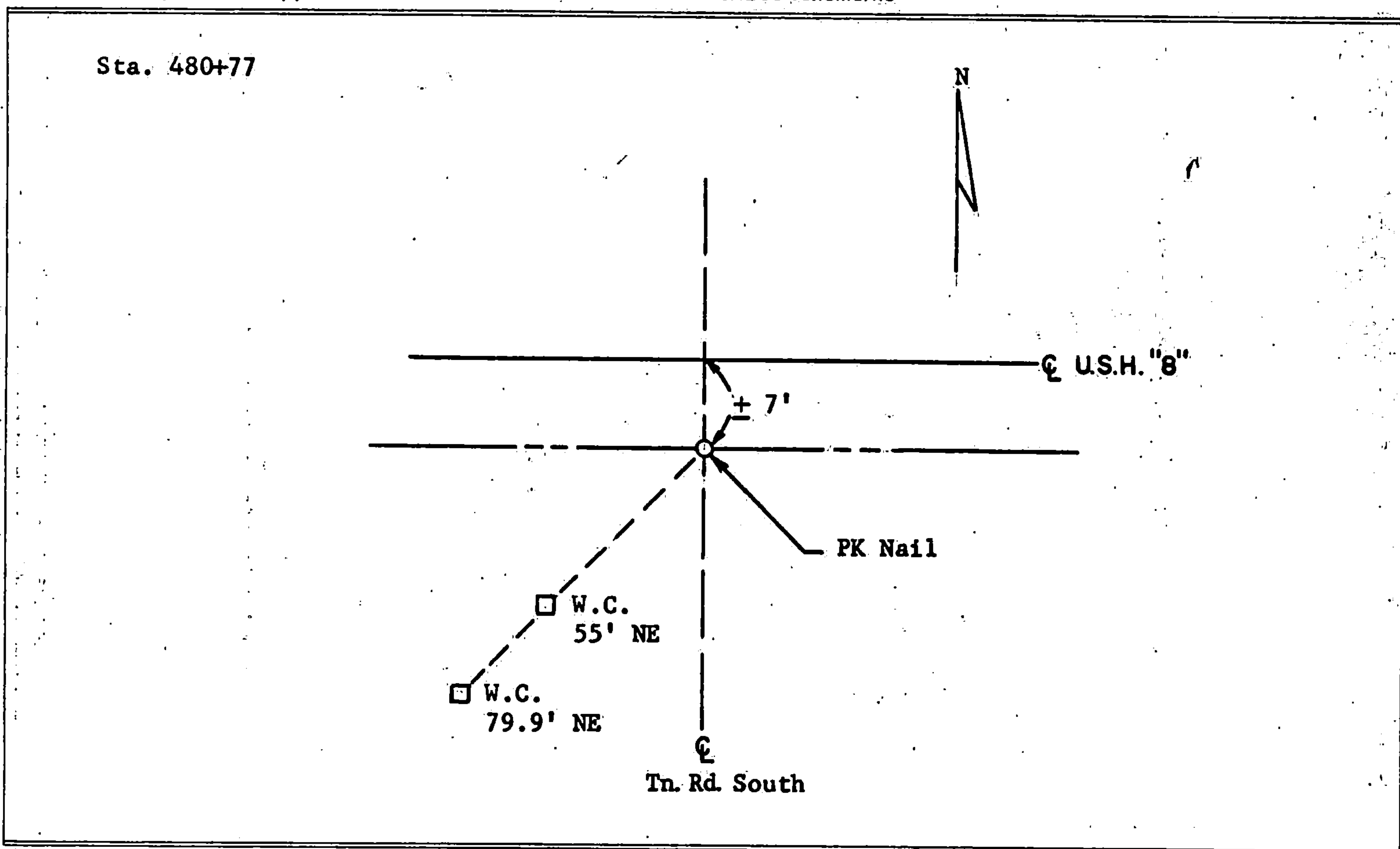
COUNTY <b>Forest</b>		
TOWN <b>Laona</b>		
HIGHWAY <b>U.S.H. 8</b>		
SECTION <b>27 - 34</b>	TOWNSHIP <b>36 N.</b>	RANGE <b>14 E.</b>
TYPE OF LANDMARK <b>1/16 Corner</b>		



**LOCATION SKETCH**  
(Location of landmark indicated by "x")



This space for copy of field notes or ties to the above described landmarks



FILED UNDER PROJECT NUMBER <b>F 021-3(14)</b>			COUNTY CLERK'S OFFICE COUNTY OF <b>FOREST COUNTY WISCONSIN</b>	
SHC DISTRICT OFFICE NUMBER <b>7</b>	CITY <b>Rhineland</b>	COUNTY <b>Oneida</b>	DATE RECEIVED FOR RECORDATION BY SENT TO <b>FOREST COUNTY SURVEYOR</b>	
LOCATED OR ESTABLISHED BY NAME <b>T.W.S.</b> <b>Party Chief</b> DATE <b>9/29/65</b>			SIGNATURE OF COUNTY CLERK <b>OCT 5 - 1965</b>	

**PRESERVATION OF LANDMARKS**

Register of Deeds  
PAGE

4361427 0010

116