

REGISTER'S OFFICE
 Forest County, Wis.
 Received for record this 15th day
 of January A.D., 2002 at
1:00 o'clock P.M. and recorded
 in Vol. Corner Restoration
 page T-21
Kay Swanson, Deputy
 Register of Deeds

174278

U.S. PUBLIC LAND SURVEY MONUMENT RECORD

(As Required by WI Adm. Code)

History of original corner establishment and subsequent restorations and descriptions of any record, monument, occupational, testimonial or other evidence considered:

1859 - James McBride, set original corner post and made the following B.T.'s:

- Birch, 20", S 44° E, 18 lks., 11.88 feet.
- Fir, 10", S 48° W, 11 lks., 7.26 feet.

2002 - I found no evidence of the original corner. Reestablished One-quarter corner midpoint and on line between Section corner to the North common to Sections 23, 24, 25 & 26 and Section corner to the South common to Sections 25, 26, 35 & 36. Set a 2" Dia. Forest County Aluminum monument for the One-quarter corner and made the new B.T.'s shown below.

Corner was: (Check All That Apply)

- Restored through acceptance of an obliterated evidence location.
- Restored through acceptance of a found perpetuated location.
- Considered a lost corner and reestablished through lost corner proportionate methods (include a plan view drawing showing distances and directions to other Public Land Survey Corners used for proportioning and determining the corner location).
- Restored or reestablished in a location that differs from a previous restoration or reestablishment (include a plan view drawing and indicate what was set and/or found).

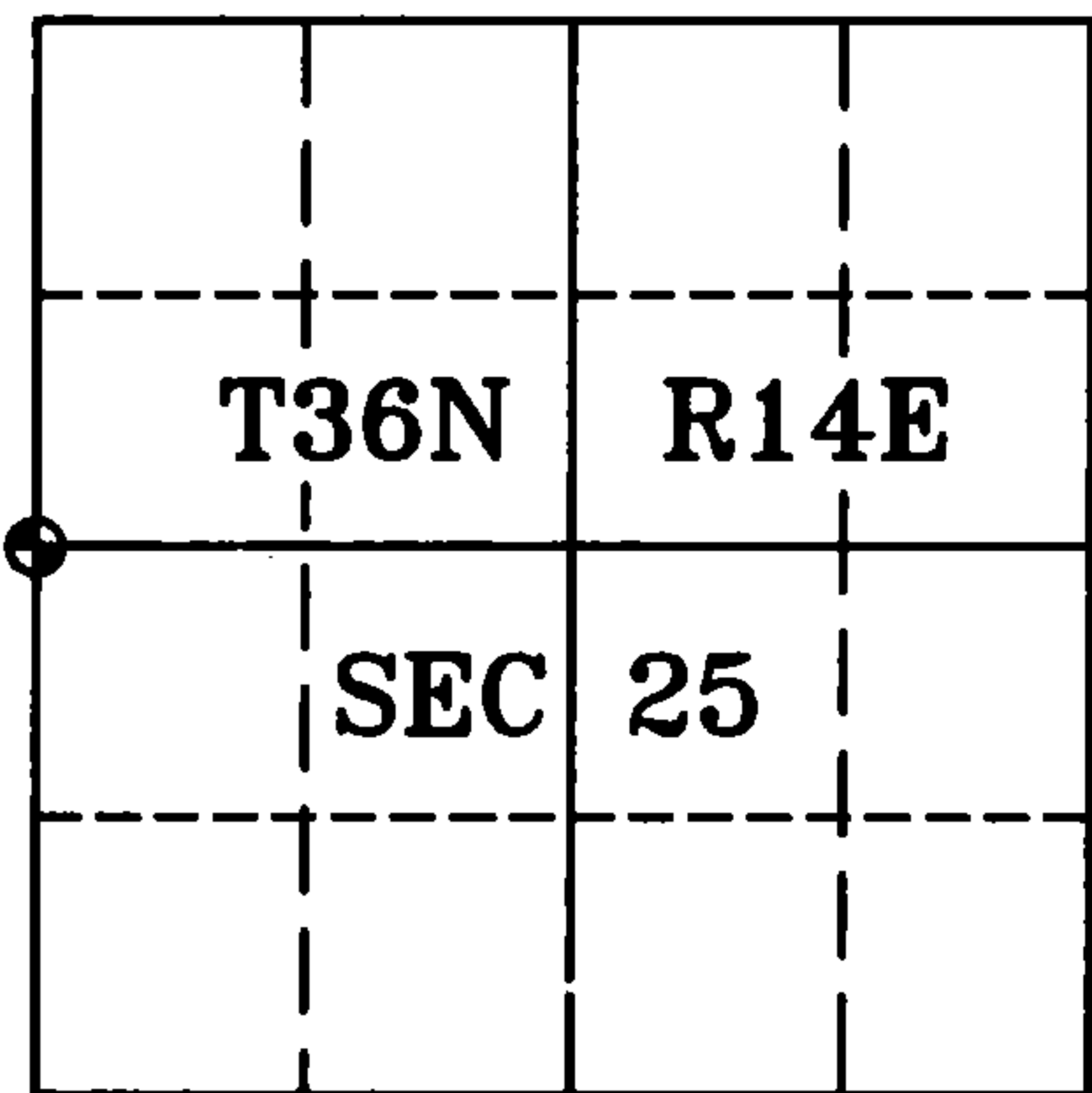
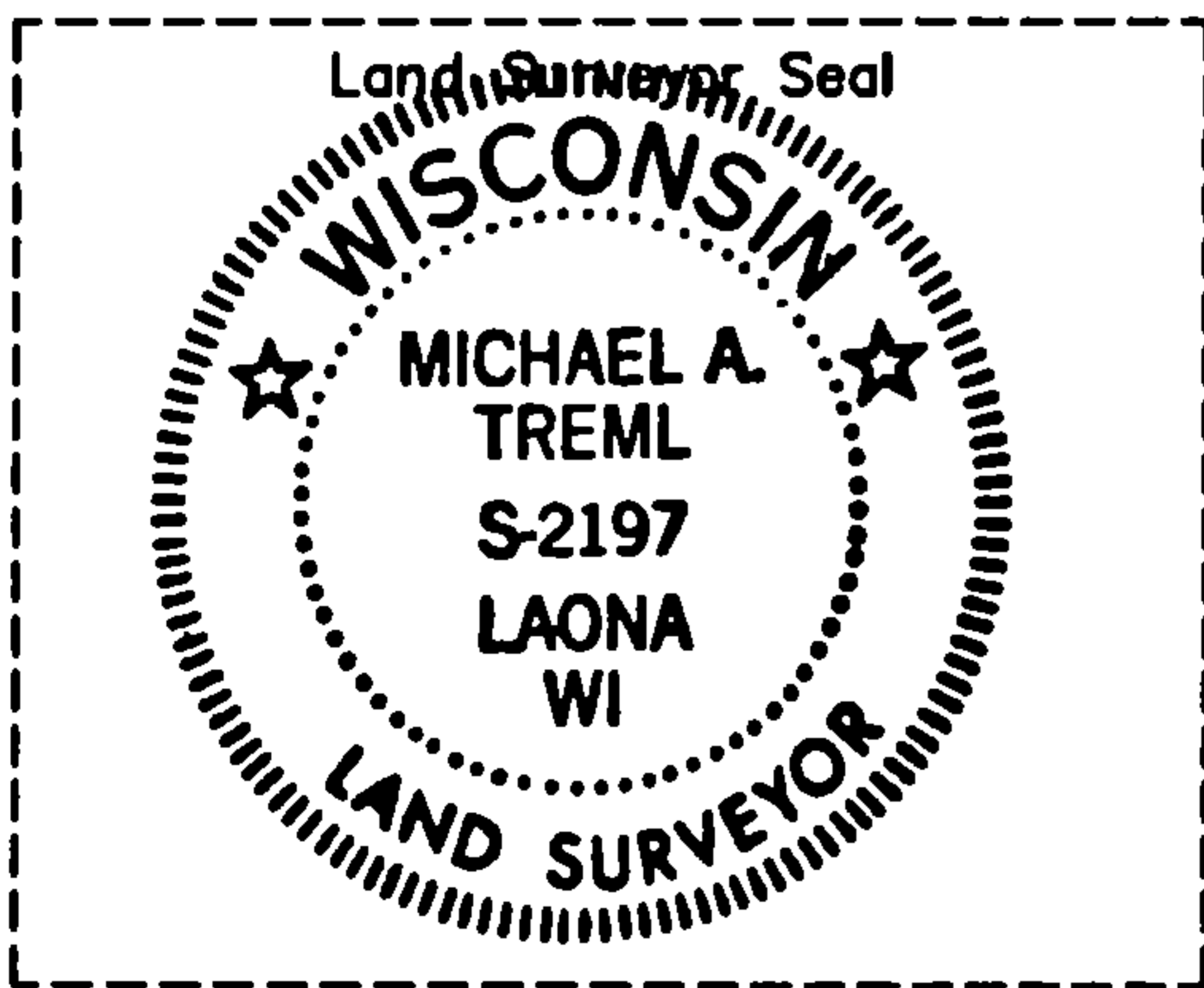
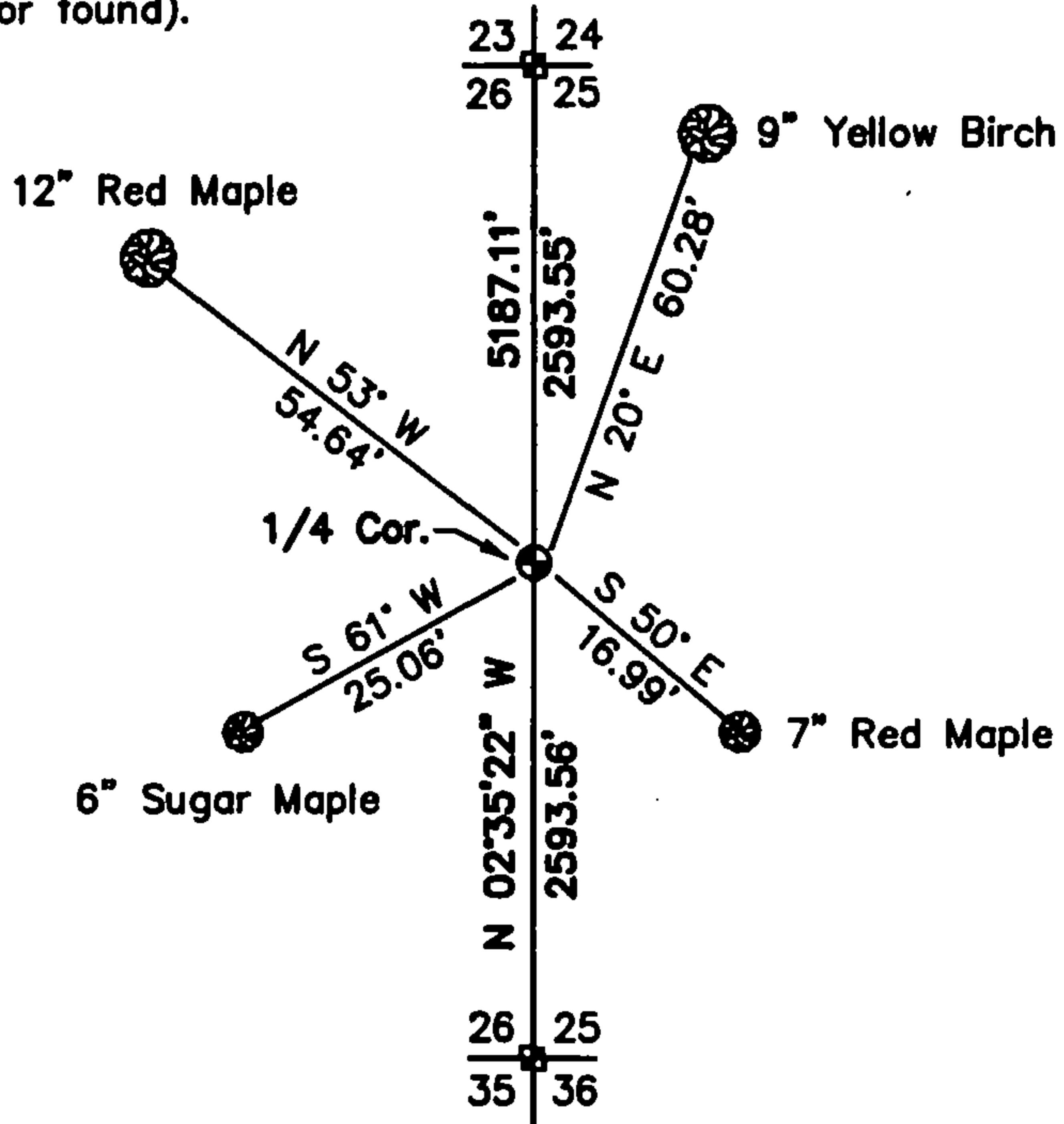
Describe the monument and accessories used to perpetuate the location of this corner (include a plan view drawing and indicate what was set and/or found).

LEGEND:

- ⊕ Set Forest County Aluminum Monument
- ⊞ Existing Recorded Monument

Note: All distances are taken to nail in side of tree.

Bearings shown for B.T.'s are assumed.
 Bearing shown for Section Line is Grid.



I, Michael A. Trembl, RLS
 (type or print name) certify that the corner location shown on this record was determined by me or under my direction and control and that this U.S. Public Land Survey Monument Record is correct and complete to the best of my knowledge and belief.

The West One-quarter corner of
 Section 25 T. 36 N., R. 14 E.
 Forest County, WI

Michael A. Trembl 1/9/02
 Signature Date

Index No. T-21

43614262000

T-21