

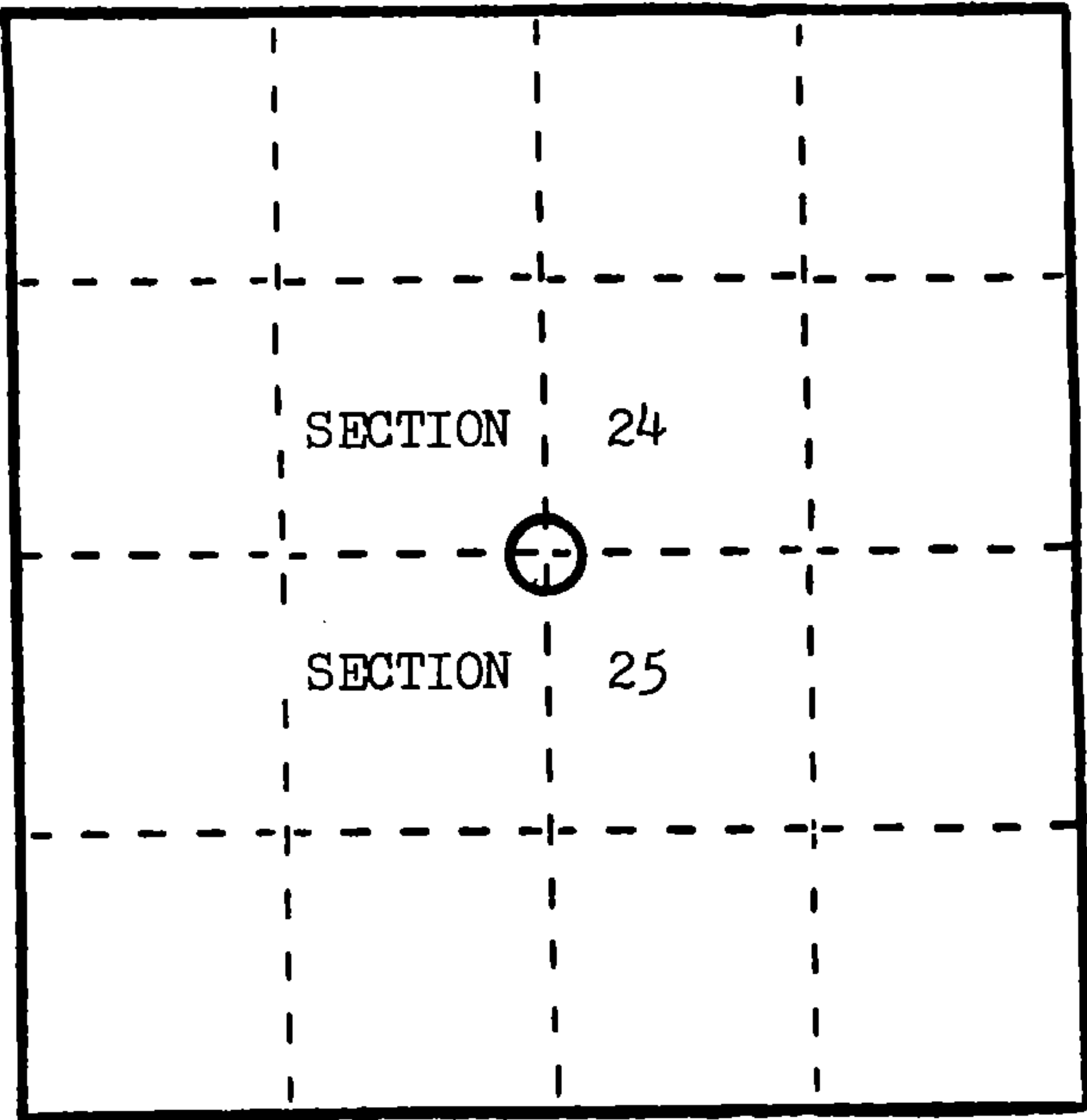
U. S. PUBLIC LAND SURVEY MONUMENT RECORD

INSTRUCTIONS: This record shall show the location of the corner and shall include all of the following nine elements (a through i).

- (a) Identify the corner by reference to the U.S. public land survey system.  
○ = Corner monument restored.

1/4 Corner to Sections 24 and 25, T.36 N., R.14 E. of the 4th Principal Meridian, Wisconsin.

REGISTER'S OFFICE  
Forest County, Wis.  
Received for record this 22nd day  
of Sept. A.D., 1986 at  
10:20 o'clock A.M. and recorded  
in Vol. CORNER RESTORATIONS  
page R-23  
Paul Aschenbrenner  
Register of Deeds



- (b) Describe any record evidence, monument evidence, occupational evidence, testimonial evidence or any other material evidence you considered, and whether the monument was found or placed.

In 1859 James Mc Bride set a wood post and marked B.T.s as follow;  
Tamarack 12" N. 40 E. 5 lks., Tamarack 10" S.86 W. 12 lks.

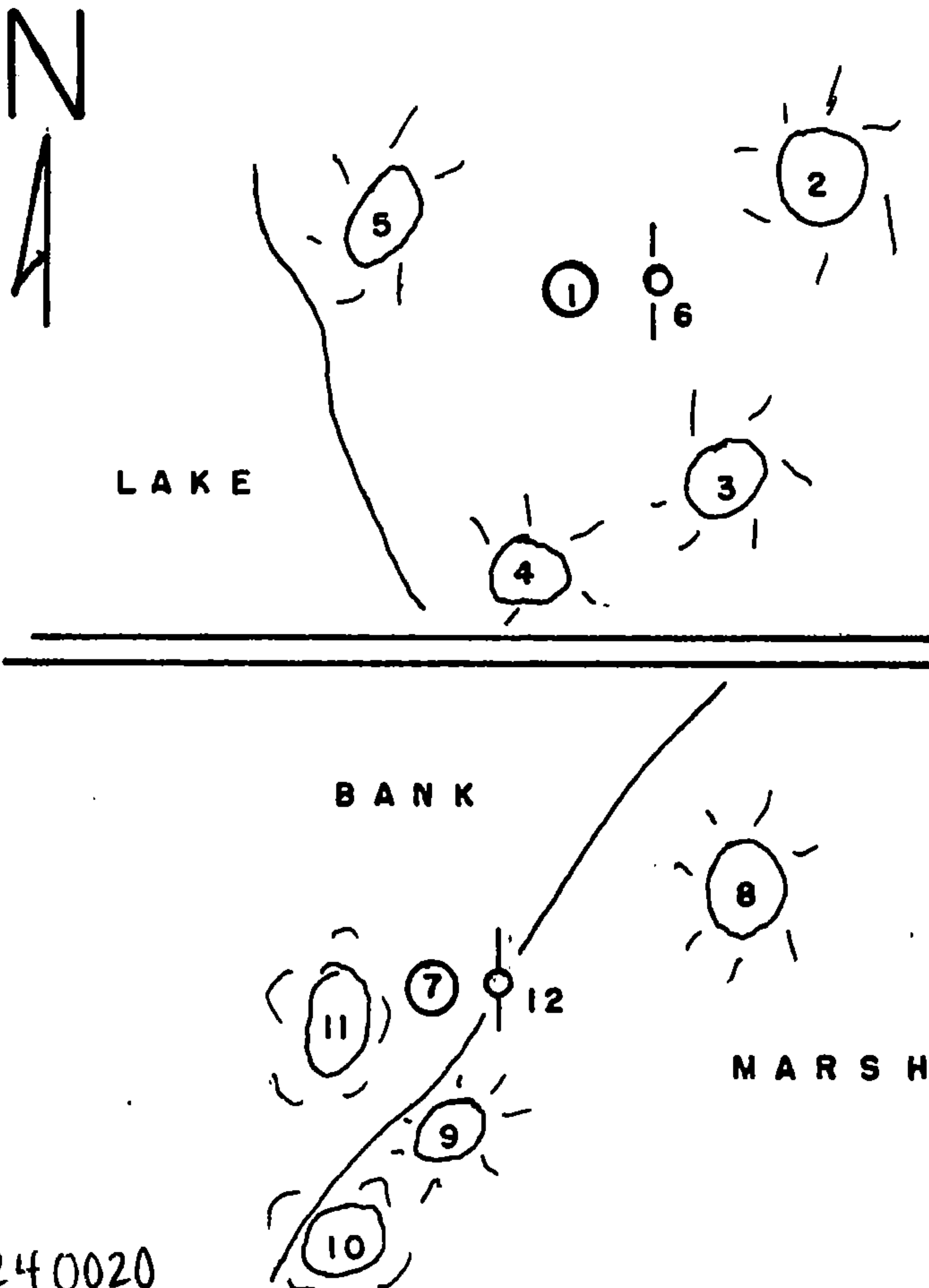
In 1986 I found the corner position marked by 1 1/4" iron pipe; found stumps of both original B.T.s which measure well from this monument; as this area is now flooded by lake, with water aprox. 4' deep, I set Witness Corners on section line as follow; a 2"x 36" Aluminum Pipe with cap bearing S.89-03.3 E. 327.7' and a 2"x 36" Aluminum Pipe with cap bearing S.87-07.9 W. 961.4'; I referenced the two W.C.s as shown below.

- (c) In the plan view drawing below, provide reference ties to at least 4 witness monuments, or, if the location is within a municipality, to at least 2 witness monuments. (Witness monuments shall be made of concrete, natural stone, iron or other equally durable material.)  
Describe witness monuments.

- (d) Show a plan view drawing depicting the relevant monuments and reference ties which is sufficient in detail to enable accurate relocation of the corner monument if the corner monument is disturbed. Indicate north.

1. W.C.EAST OF LAKE  
2. B.T. Hemlock 10" N.74 E. 18.1'  
3. B.T. Cedar 5" S.38 E. 14.5'  
4. B.T. Cedar 5" S.08 W. 19.25'  
5. B.T. Cedar 7" N.73 W. 10.55'  
6. Steel Sign Post EAST 1.3'

7. W.C.WEST OF LAKE  
8. B.T. Balsum 6" N.74 E. 11.65'  
9. B.T. Hemlock 20" SOUTH 12.7'  
10. B.T. Maple 10" S.30 W. 18.1'  
11. B.T. Maple 8" S.73 W. 4.4'  
12. Steel Sign Post EAST 1.3'



(e) Describe any material discrepancy between the location of the corner as restored or reestablished and the location of that corner as previously restored or reestablished by distance and direction. Show the discrepancy on the plan view drawing under (d), above. Show the distances between the corner as previously restored or reestablished and (1) the corner as restored or reestablished, and (2) to at least 2 of the witness monuments shown on the drawing in (d), above.

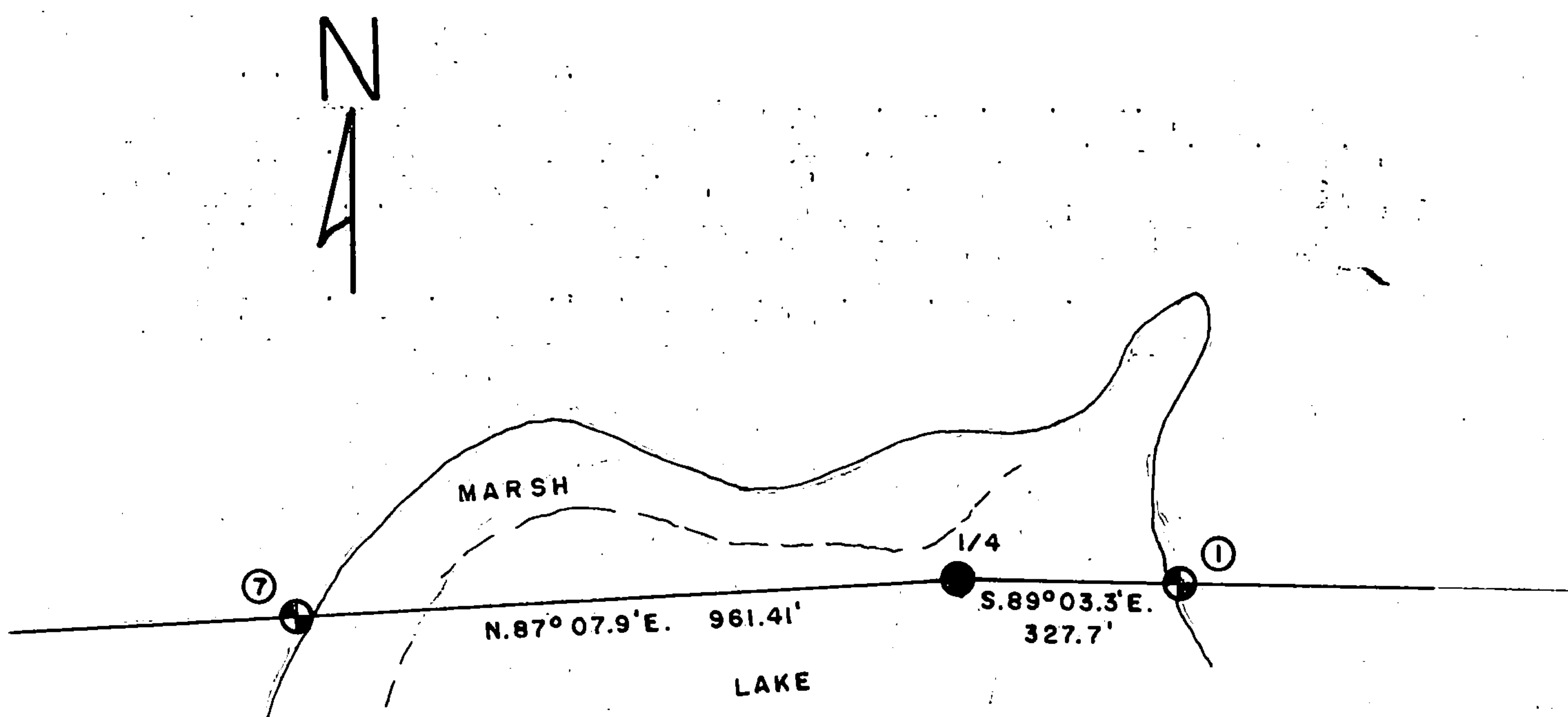
none

(f) Was the corner restored through acceptance of (1) an obliterated evidence location, or, (2) a found perpetuated location?

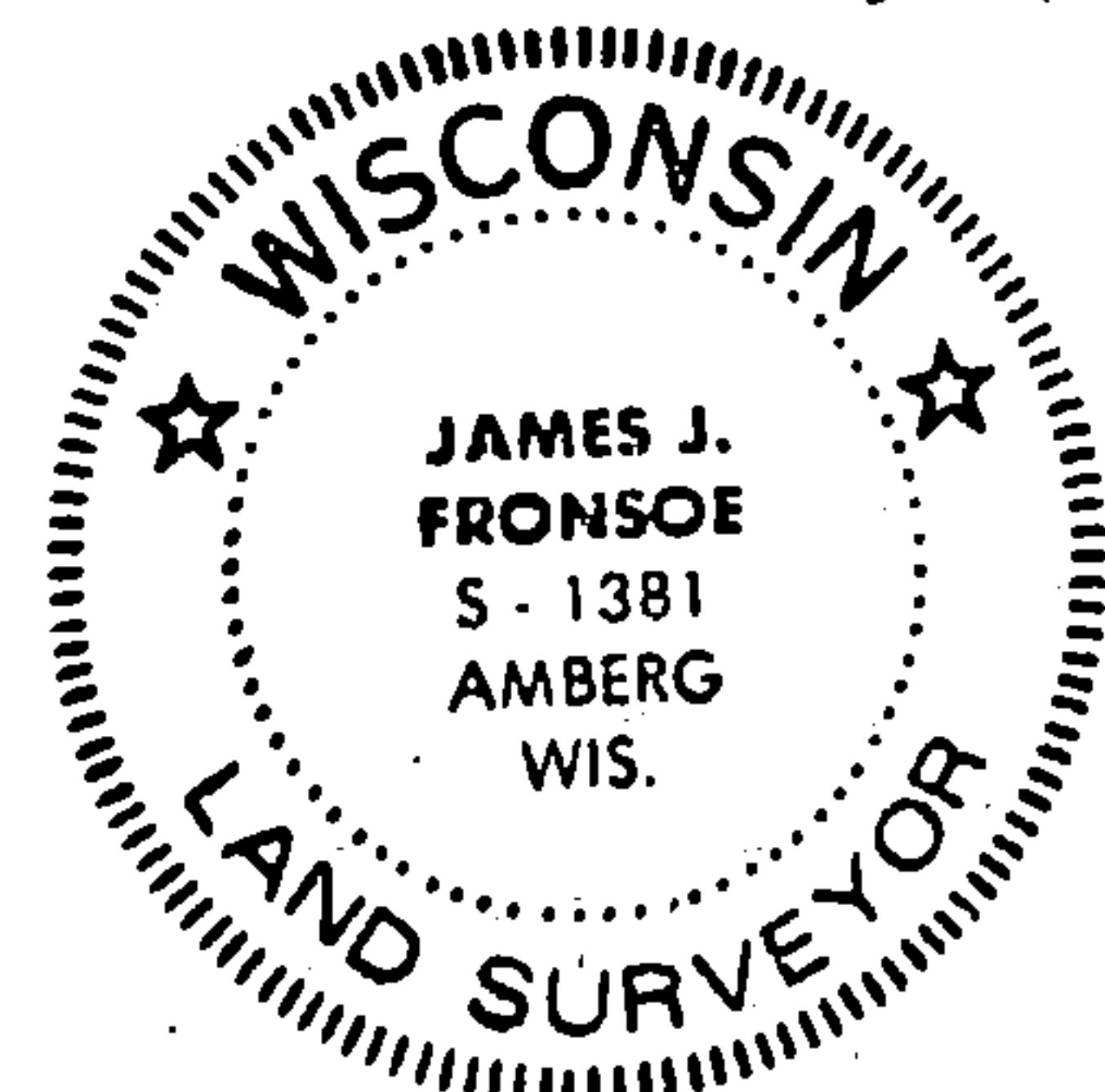
found

(g&h) Was the corner reestablished through lost corner proportionate methods? If so, show the method, including the directions and distances to other public land survey corners used as evidence or used for proportioning in determining the corner location?

no



Affix Land Surveyor Seal



(1) I, James J. Fronsoe, R.L.S.  
(type or print name) certify that the corner location shown on this record was determined by me or under my direction and control and that this U.S. Public Land Survey Monument Record is correct and complete to the best of my knowledge and belief.

Signature James J. Fronsoe Date Sept. 1986