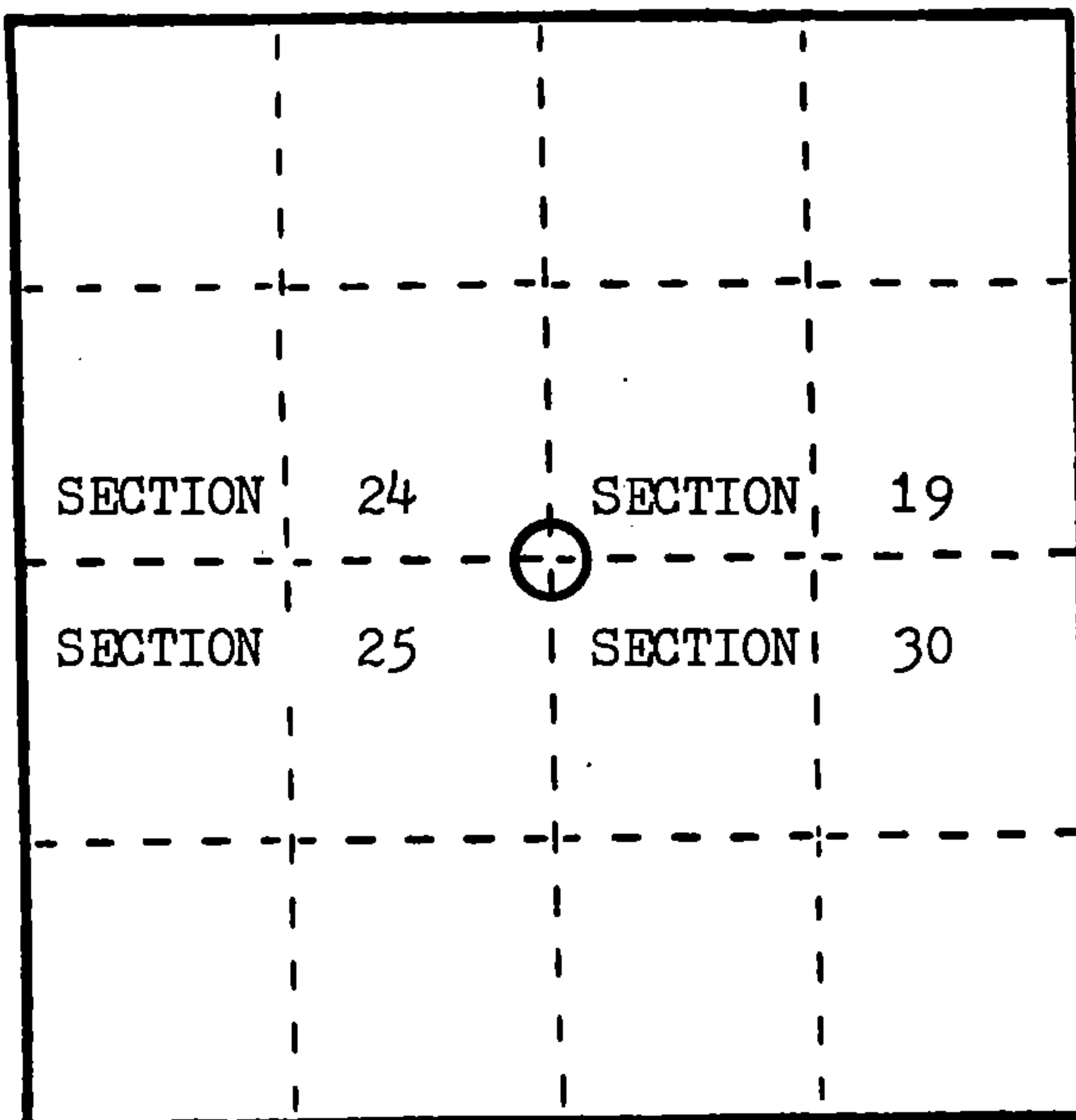


**U. S. PUBLIC LAND SURVEY MONUMENT RECORD**

**INSTRUCTIONS:** This record shall show the location of the corner and shall include all of the following nine elements (a through i).

- (a) Identify the corner by reference to the U.S. public land survey system.
- = Corner monument restored.

Corner to Sections 24 and 25, T.36 N., R.14 E. and Sections 19 and 30, T.36 N., R.15 E. of the 4th Principal Meridian, Wisconsin.



REGISTER'S OFFICE }  
 Forest County, Wis. }  
 Received for record this 22nd day  
 of Sept. A.D., 1986 at  
10:20 o'clock A.M. and recorded  
 in Vol. CORNER RESTORATIONS  
 page R-25  
*Paul Scheubauer*  
 Register of Deeds

- (b) Describe any record evidence, monument evidence, occupational evidence, testimonial evidence or any other material evidence you considered, and whether the monument was found or placed.

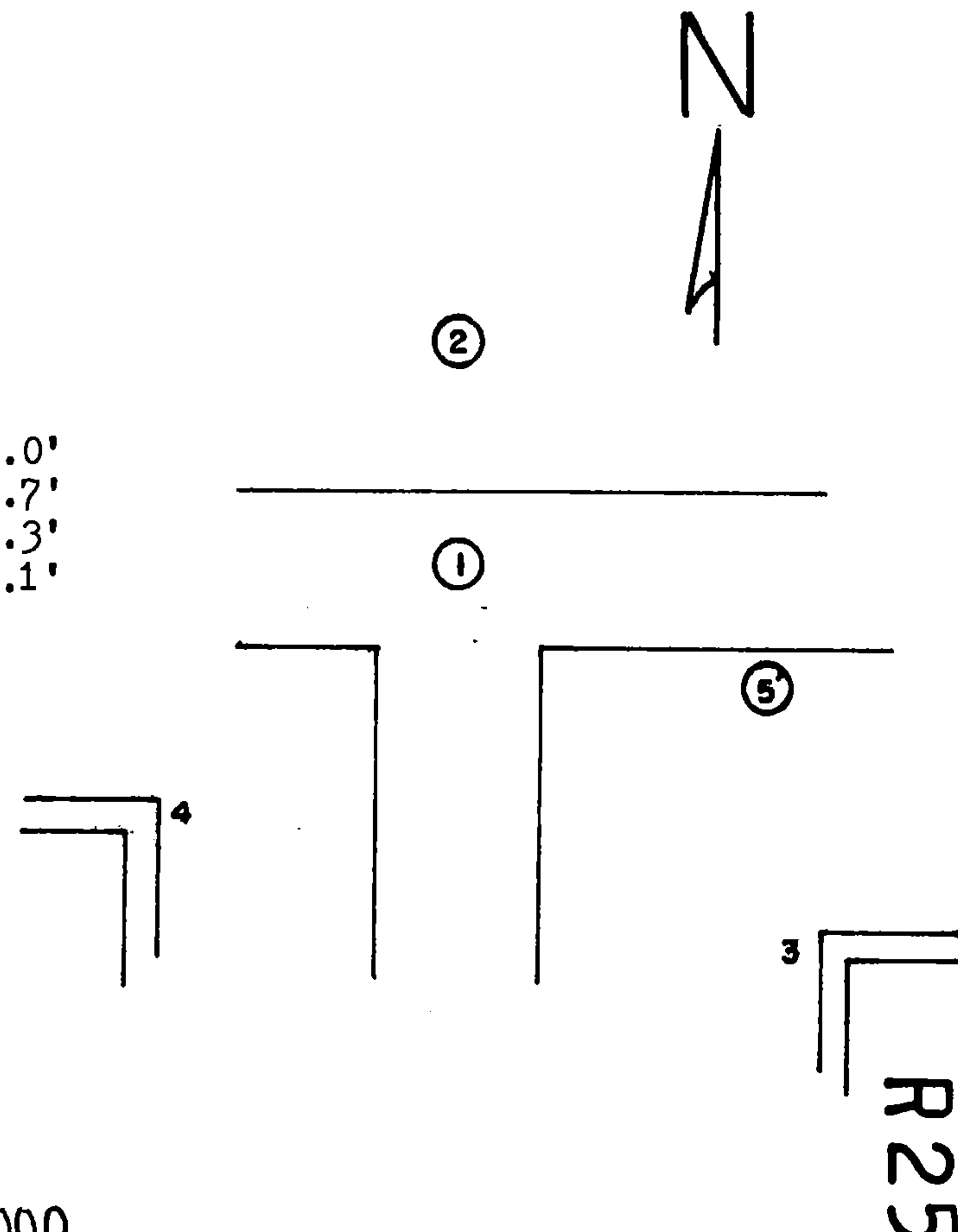
In 1859 James Mc Bride set a wood post and marked B.T.s as follow;  
 Hemlock 14" S.41 W. 28 lks., Hemlock 22" N.66 W. 28 lks., Y.Birch 18" N.47 E. 55 lks.,  
 Hemlock 16" S.58 E. 48 lks.

In 1985 I found a P.K. nail in aproximate center of road intersection; I was told by Bob Mentz and an adjoining land owner, both long time residents of the immediate area, that the corner used to be farther west by several feet; I dug up a 10' x 15' area of road intersection with a backhoe searching for evidence, found that old N.- S. highway had been graded down below natural surface, destroying original corner location; set corner in center of old E.- W. road and 606' east from center of existing rail road as given in old R.R. Plat; I accept this position as the best evidence of the corner location referenced as shown below. I set a 3/4" x 18" threaded iron pin for corner in road.

- (c) In the plan view drawing below, provide reference ties to at least 4 witness monuments, or, if the location is within a municipality, to at least 2 witness monuments. (Witness monuments shall be made of concrete, natural stone, iron or other equally durable material.) Describe witness monuments.

- (d) Show a plan view drawing depicting the relevant monuments and reference ties which is sufficient in detail to enable accurate relocation of the corner monument if the corner monument is disturbed. Indicate north.

1. Section Corner
2. W.C. 2"x 36" Aluminum Pipe N.00-08.9 W. 33.0'
3. N.W. Corner of House Foundation S.48 E.123.7'
4. N.E. Corner of House Foundation S.63 W. 98.3'
5. 1 1/4" Iron Pipe S.73 E. 74.1'



- (e) Describe any material discrepancy between the location of the corner as restored or reestablished and the location of that corner as previously restored or reestablished by distance and direction. Show the discrepancy on the plan view drawing under (d), above. Show the distances between the corner as previously restored or reestablished and (1) the corner as restored or reestablished, and (2) to at least 2 of the witness monuments shown on the drawing in (d), above.

none

- (f) Was the corner restored through acceptance of (1) an obliterated evidence location, or, (2) a found perpetuated location?

corner restored using center of old E.- W. road and the distance east from the old rail road as given on R.R. Plat.

- (g&h) Was the corner reestablished through lost corner proportionate methods? If so, show the method, including the directions and distances to other public land survey corners used as evidence or used for proportioning in determining the corner location?

no

Affix Land Surveyor Seal



- (1) I, James J. Fronsoe, R.L.S.  
(type or print name) certify that the corner location shown on this record was determined by me or under my direction and control and that this U.S. Public Land Survey Monument Record is correct and complete to the best of my knowledge and belief.

Signature

James J. Fronsoe, Sept, 1986

Date