

U.S. PUBLIC LAND SURVEY MONUMENT RECORD

Index No. L-25

State of Wisconsin }  
 County of Forest } ss.

I, Gary L. Pisoni, do hereby certify that on the 17th day of August, 1993, I found evidence of the East quarter corner of Section 13 Township 36, North, Range 14 East, Fourth Principal Meridian, as described hereon; and that from this evidence I established a new monument and accessories as described hereon to perpetuate the original location of this corner.

Resident witnesses:

.....

.....

.....

History of original corner establishment:

Original Government Survey in 1857 by Artemas Curtis. North between Sections 13 and 18, at 40.00 chains, set Quarter Section Post to Sections 13 and 18, from which the following bear:

Cedar	6"	S 47°W	24 lks.
Spruce	8"	N 33°E	29 lks.

Description of corner evidence found:

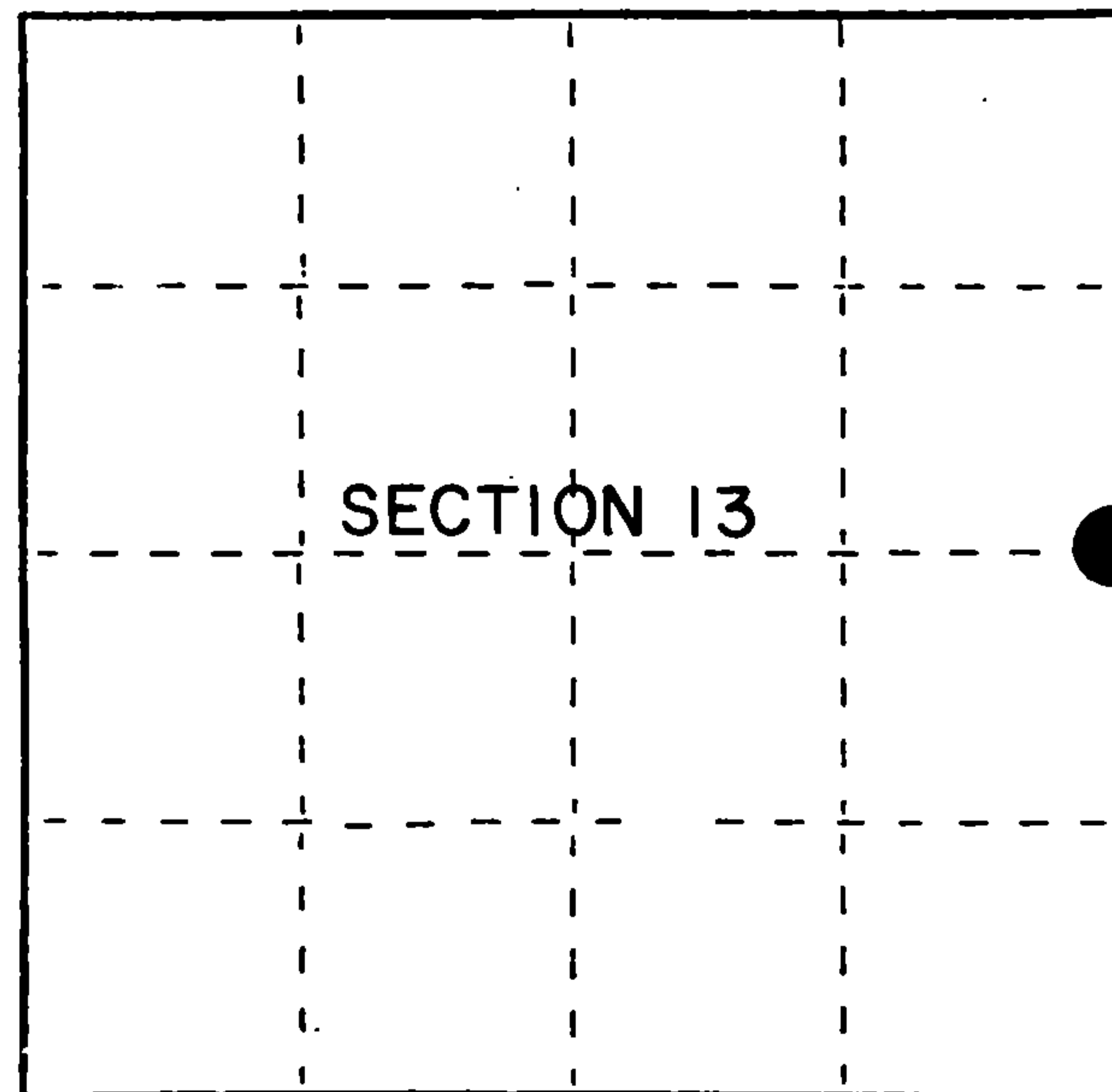
No original corner evidence was recovered.

I re-established the corner position at proportionate distance and on line between the Northeast and Southeast Section corners of Section 13.

Description of monument and accessories I established to perpetuate the original location of this corner.

At the corner position, set a 2½ inch diameter aluminum pipe monument, 3 feet long, 3 inches above the ground surface, with an aluminum cap stamped: T36N, R14E, R15E, 1/4, S-13, S-18, 1993, S-1634; from which the following new blazed and scribed bearing trees bear: (all measurements taken to a nail in side of tree)

Cedar	12"	S 45°W	85.84 feet
Cedar	10"	S 87°W	54.28 feet
Cedar	13"	N 67°W	51.83 feet
Steel sign post		South	0.97 feet



● = Corner monument restored.

Dated at Iron River, MI, this 23rd day of December, 1993.

Signature Gary L. Pisoni Title Land Surveyor Registration No. S-1634  
 (County Surveyor, Registered Land Surveyor, or other duly authorized official)

Office of Register of Deeds, County of Forest, I hereby certify that the within instrument was filed in this office for record on the 20th day of March, 1997 at 1:30 o'clock P. M.

(Register of Deeds)

By Paul Tomlinson Deputy

FORM NO. 905-A

Stock No. 26273

158103

43614132000

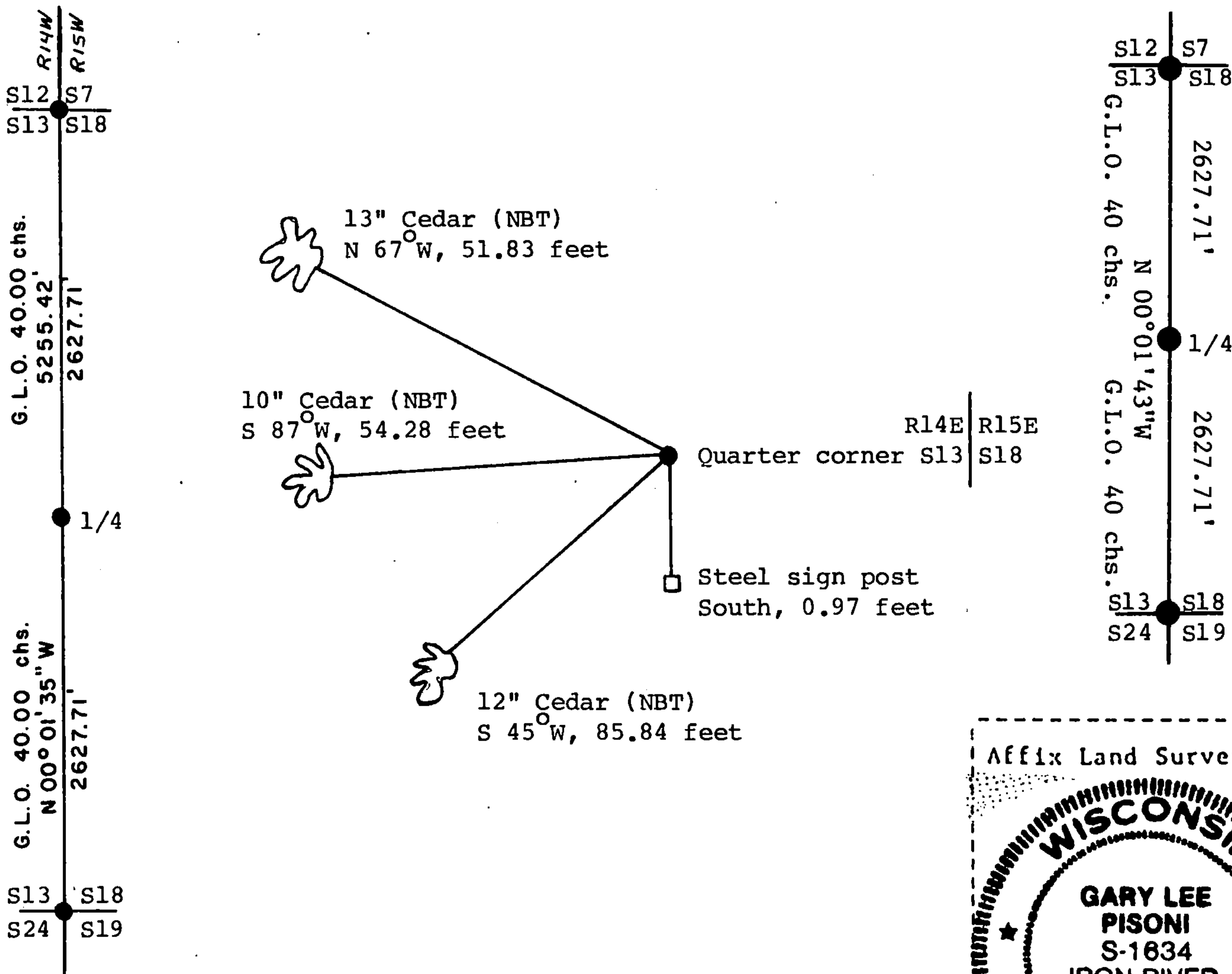
e) Describe any material discrepancy between the location of the corner as restored or reestablished and the location of that corner as previously restored or reestablished by distance and direction. Show the discrepancy on the plan view drawing under (d), above. Show the distances between the corner as previously restored or reestablished and (1) the corner as restored or reestablished, and (2) to at least 2 of the witness monuments shown on the drawing in (d), above.

See drawing below

(f) Was the corner restored through acceptance of (1) an obliterated evidence location, or, (2) a found perpetuated location?

Restored through lost corner proportionate methods.

(g&h) Was the corner reestablished through lost corner proportionate methods? If so, show the method, including the directions and distances to other public land survey corners used as evidence or used for proportioning in determining the corner location?



Gary L. Pisoni

(i) I, Gary L. Pisoni (type or print name) certify that the corner location shown on this record was determined by me or under my direction and control and that this U.S. Public Land Survey Monument Record is correct and complete to the best of my knowledge and belief.

*Gary L. Pisoni*

12-23-93

Signature

Date

