

CERTIFIED LAND CORNER RESTORATION

Index No. **N25**

State of Wisconsin }
County of Forest } ss.

I Philip T. Hansen, do hereby certify that on the 31st day of December, 1975, I found evidence of the Section corner of Sec. 13-18-19-24 Township 36N, North, Range 14 & 15 East, Fourth Principal Meridian, as described hereon; and that from this evidence I established a new monument and accessories as described hereon to perpetuate the original location of this corner.

History of original corner establishment: Original corner established by A. Curtiss, Deputy Surveyor, in 1857 from which sugar 15" bears S54°W, 14 links, sugar 14" bears N11°W, 20 links, elm 8" bears N42°E, 29 links, and lynn 12" bears S65°E, 44 links.

Corner recovered by Wisconsin State Highway Commission in 1967. Set 3" brass cap in 2" iron pipe that sets in 6" square concrete base. Corner sets 77 links east of center line of highway 8. No record of reference marks.

Description of corner evidence found: Recovered 2" iron pipe with 3" brass cap set in a 6 x 6" concrete base. Cap is stamped -

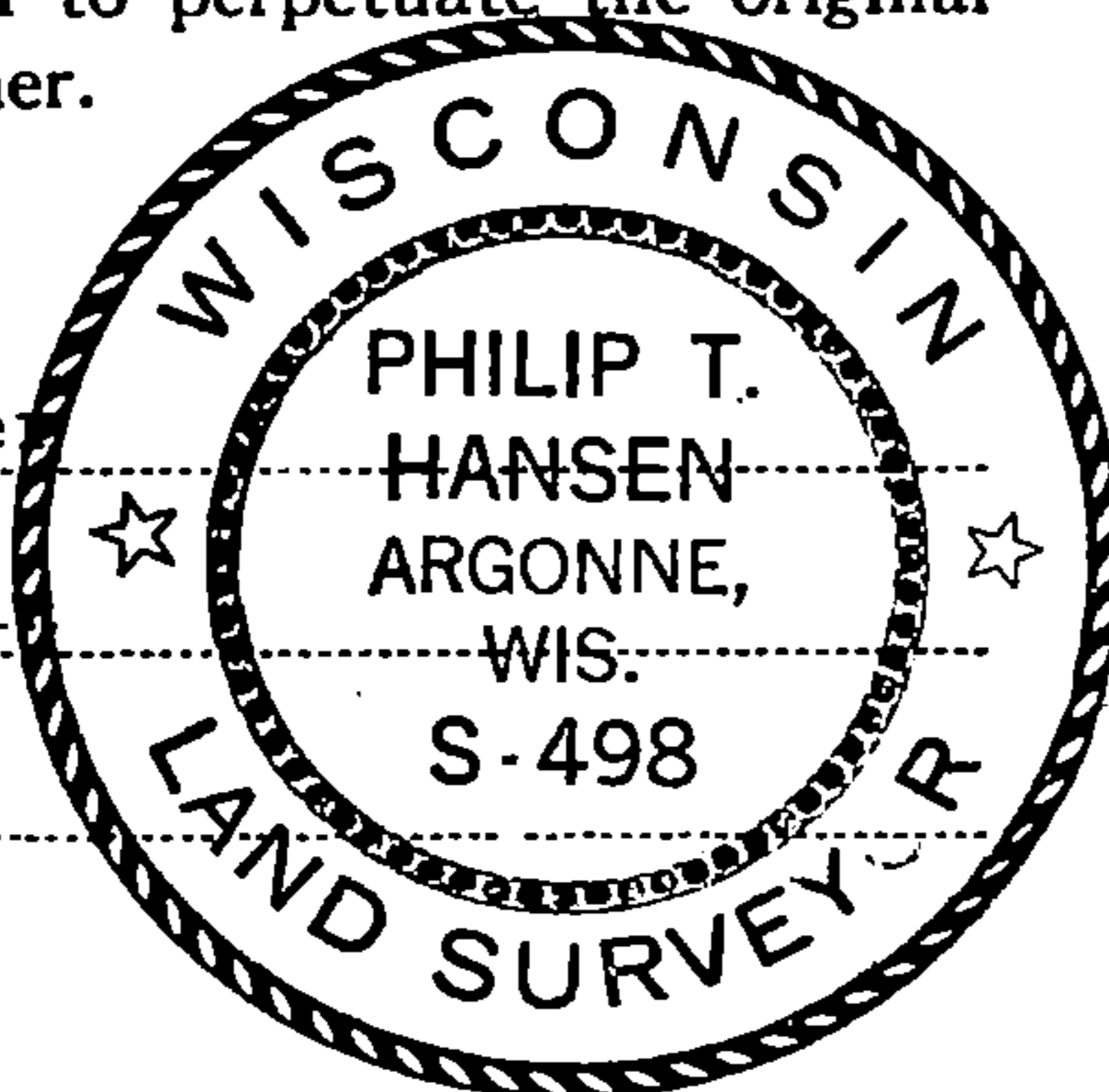
Monument recovered in good condition.

State Highway Commission of Wis.

Resident witnesses:

Glen Barke

Jim Clafli



T36N
13 | 18
24 | 19
1967

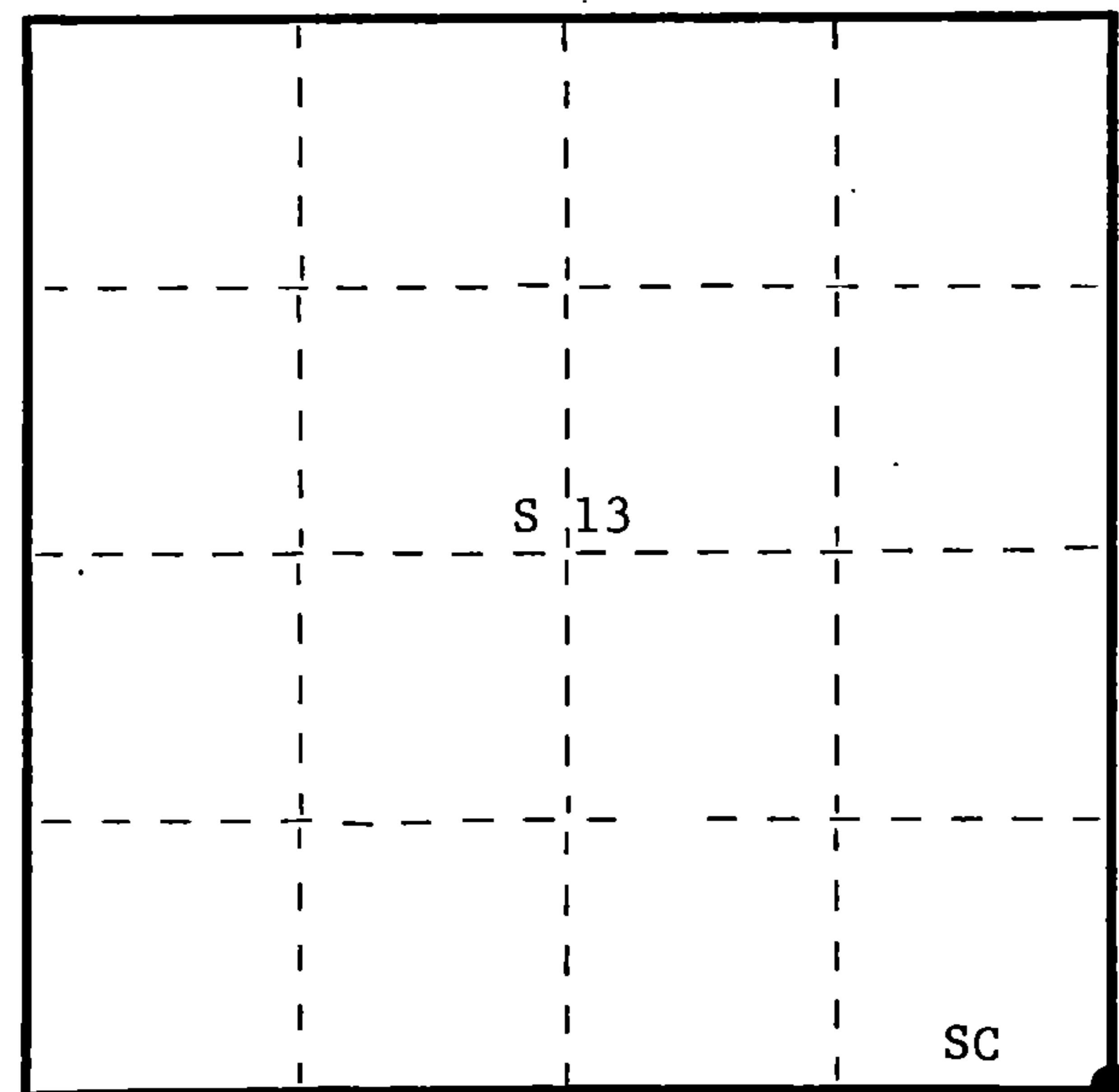
Description of monument and accessories I established to perpetuate the original location of this corner. As monument was recovered in good condition it was left as found.

NBT's - Sugar 10" S79°W 3,136 chains scribed SCBT
Sugar 6" N79°W 3.12 chains scribed SCBT

NBT's painted blue.

FORM 985 H. C. MILLER CO., MILWAUKEE

T36N R14E



○ = Corner monument restored.

Dated at Argonne, Wis., this 8th day of January, 1976.

Signature Philip T. Hansen Title Registered Land Surveyor Registration No. S-498
(County Surveyor, Registered Land Surveyor, or other duly authorized official)

Office of Register of Deeds, County of Forest, I hereby certify that the within instrument was filed in this office for record on the 4th day of February, 1976 at 4:00 o'clock P. M.

Eugene Stasznyf
(Register of Deeds)
By Deputy

DOCUMENT NUMBER 108722

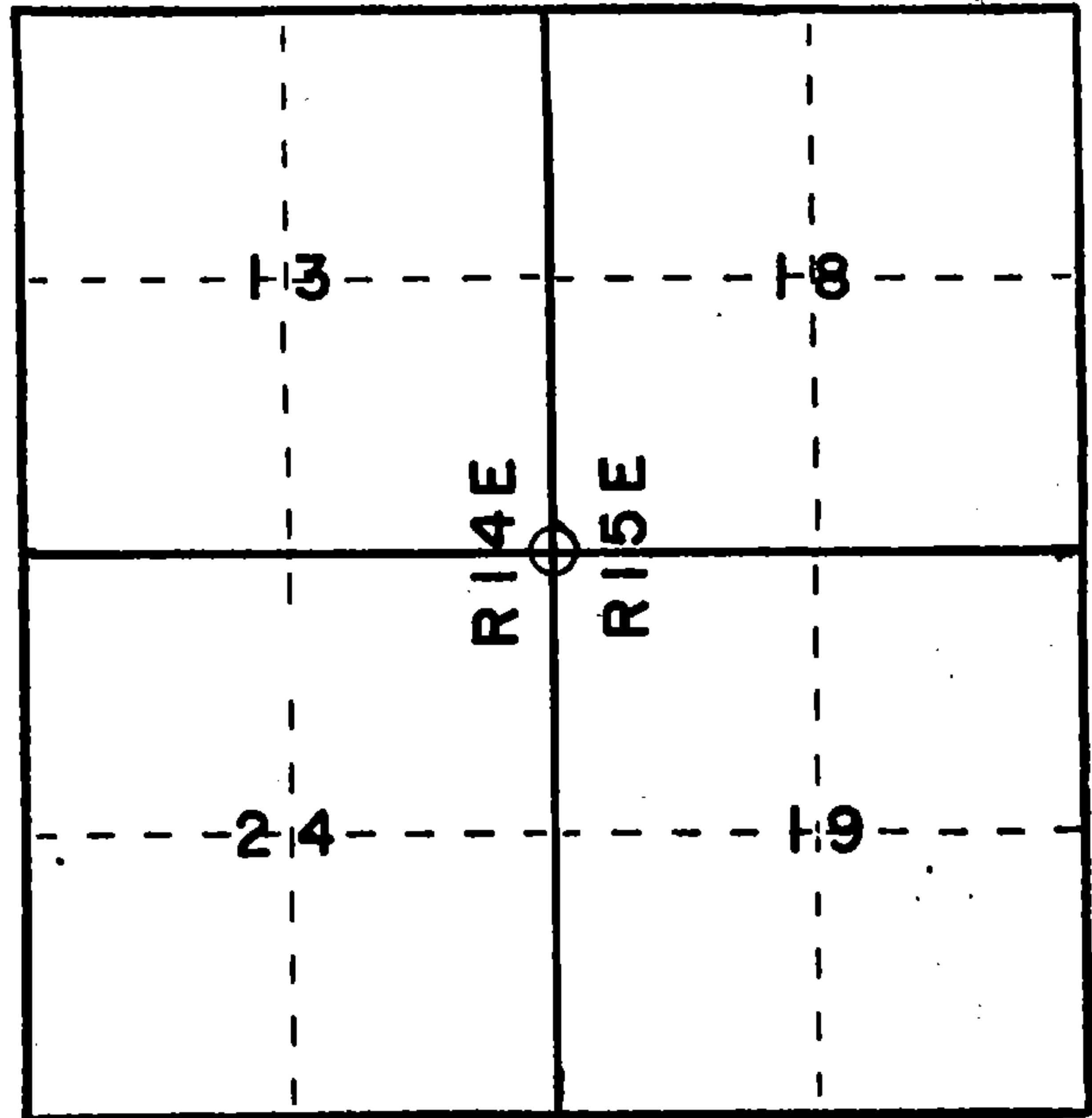
43619130000

U. S. PUBLIC LAND SURVEY MONUMENT RECORD

INSTRUCTIONS: This record shall show the location of the corner and shall include all of the following nine elements (a through i).

- (a) Identify the corner by reference to the U.S. public land survey system.
- = Corner monument restored.

Section Corner 13, 18, 19 & 24
T36N, R14 & 15 E



REGISTER'S OFFICE
Forest County, Wis.
Received for record this 5th day
of January A.D., 1987 at
2:00 o'clock P.M. and recorded
in Vol. CORNER RESTORATIONS
page N-25
Paul Aschenbrenner
Register of Deeds

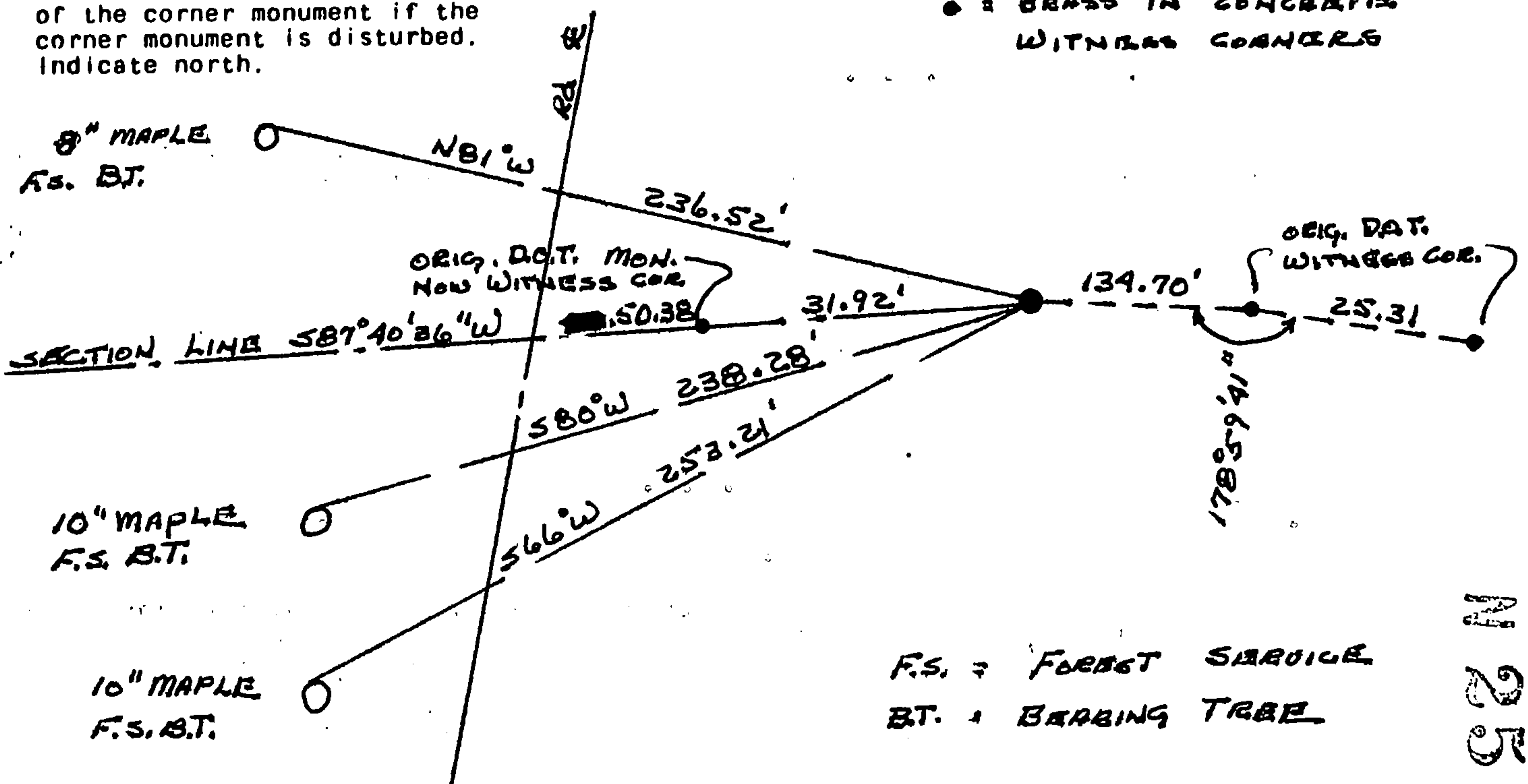
- (b) Describe any record evidence, monument evidence, occupational evidence, testimonial evidence or any other material evidence you considered, and whether the monument was found or placed.

The previous monument that was set by D.O.T. was found to be in the wrong place. Location of that monument recorded Doc. No. 94282.

- (c) In the plan view drawing below, provide reference ties to at least 4 witness monuments, or, if the location is within a municipality, to at least 2 witness monuments. (Witness monuments shall be made of concrete, natural stone, iron or other equally durable material.) Describe witness monuments.

- (d) Show a plan view drawing depicting the relevant monuments and reference ties which is sufficient in detail to enable accurate relocation of the corner monument if the corner monument is disturbed. Indicate north.

- = D.O.T. ALU. MON.
- = BRASS IN CONCRETE WITNESS CORNERS



F.S. = FOREST SERVICE
BT. = BARBING TREE

N
25

- (e) Describe any material discrepancy between the location of the corner as restored or reestablished and the location of that corner as previously restored or reestablished by distance and direction. Show the discrepancy on the plan view drawing under (d), above. Show the distances between the corner as previously restored or reestablished and (1) the corner as restored or reestablished, and (2) to at least 2 of the witness monuments shown on the drawing in (d), above.

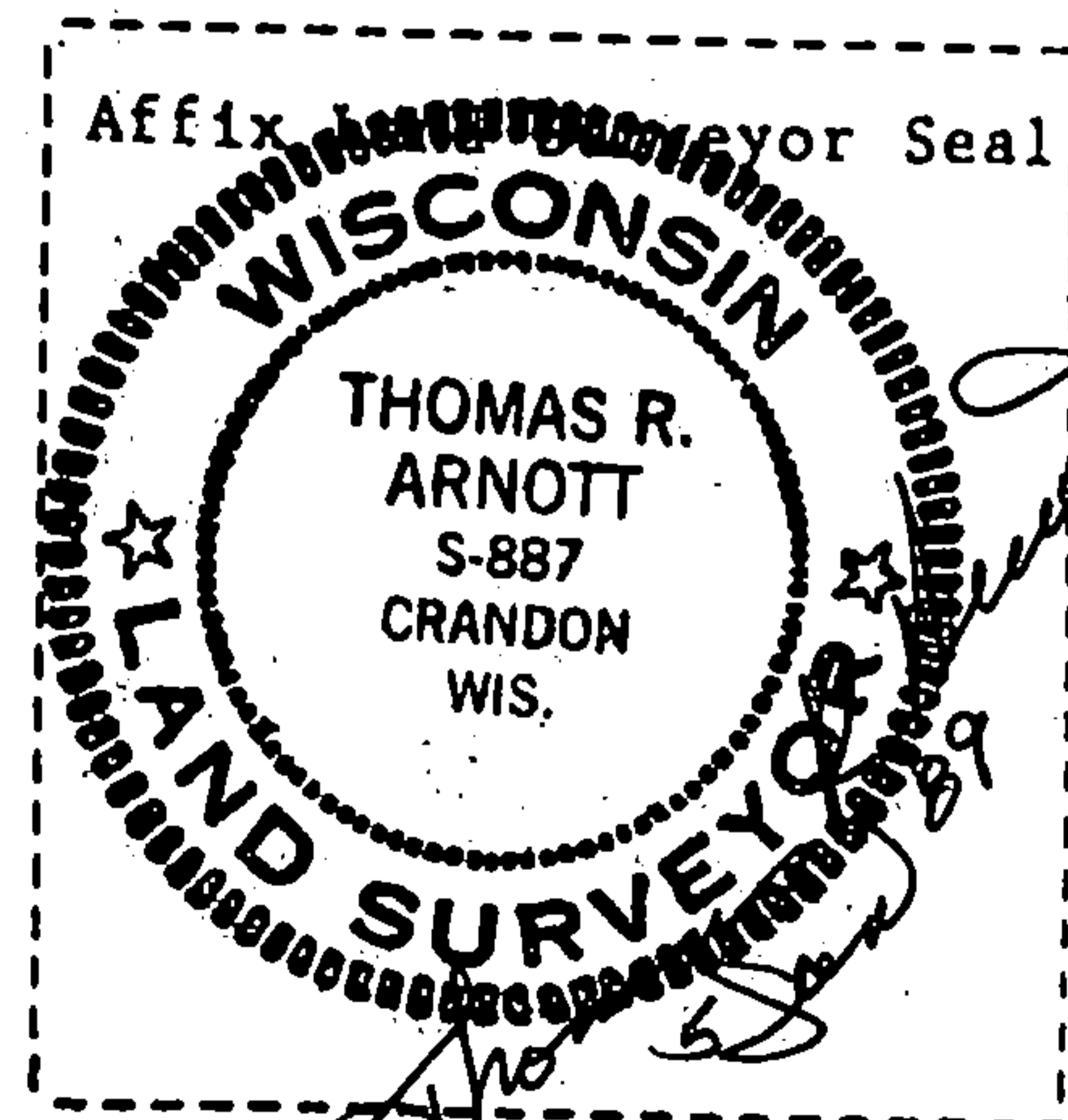
The old monument was found to be 50.38 feet from the road centerline instead of 82.30 feet as required in descriptions and drawings. Measurements taken from old R.O.W. plats also verified that the corner that was set was in the wrong place.

- (f) Was the corner restored through acceptance of (1) an obliterated evidence location, or, (2) a found perpetuated location?

Error in the location of the original D.O.T. monument.

- (g&h) Was the corner reestablished through lost corner proportionate methods? If so, show the method, including the directions and distances to other public land survey corners used as evidence or used for proportioning in determining the corner location?

Located from Old and new D.O.T. R.O.W. plats.



- (i) I, Thomas R. Arnett
(type or print name) certify that the corner location shown on this record was determined by me or under my direction and control and that this U.S. Public Land Survey Monument Record is correct and complete to the best of my knowledge and belief.

Thomas R. Arnett
Signature

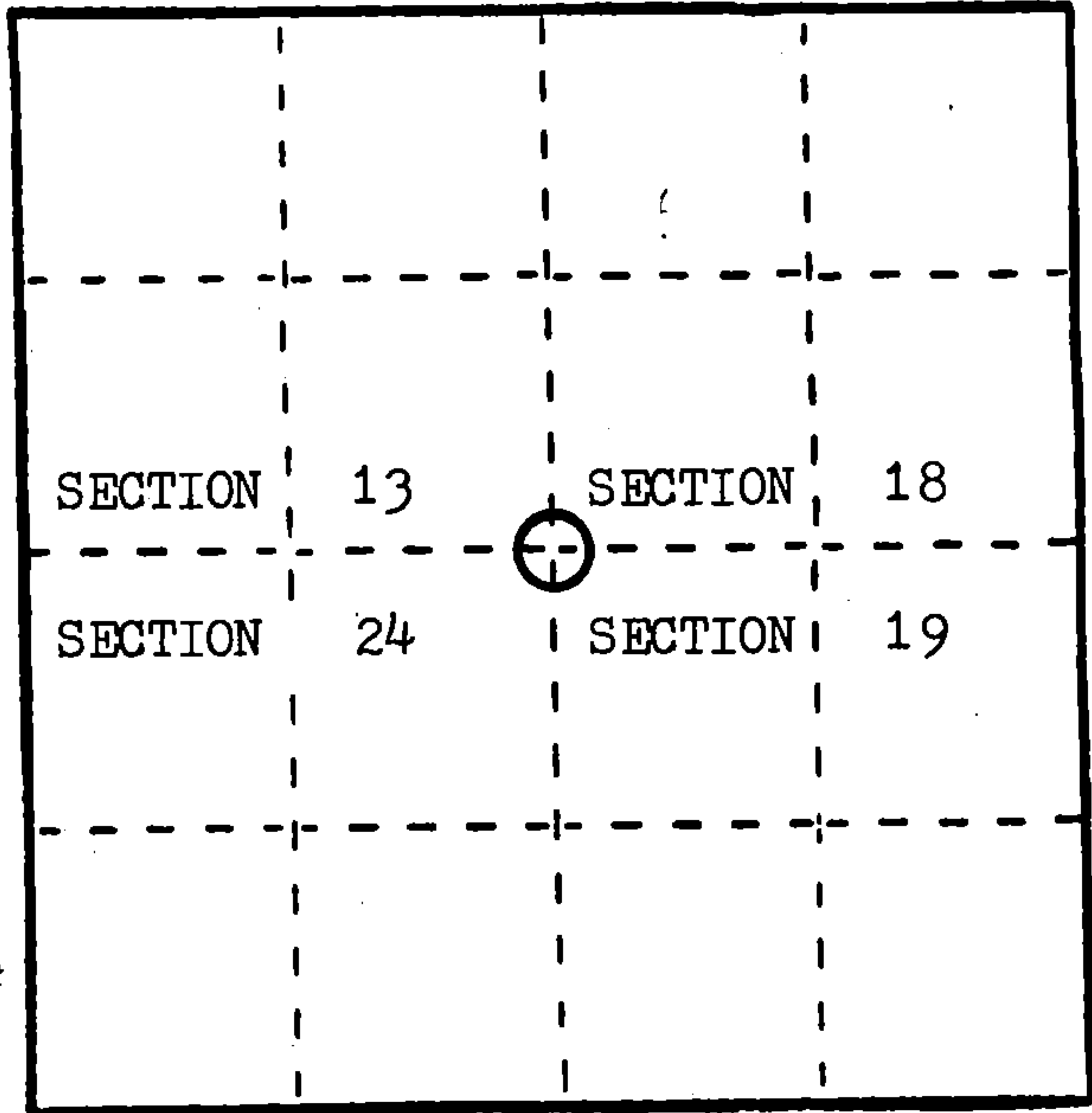
5/29/89
Date

U. S. PUBLIC LAND SURVEY MONUMENT RECORD

INSTRUCTIONS : This record shall show the location of the corner and shall include all of the following nine elements (a through i).

- (a) Identify the corner by reference to the U.S. public land survey system.
 ○ = Corner monument restored.

Corner to Sections 13 and 24, T.36 N., R.14 E. and Sections 18 and 19, T.36 N., R.15 E. of the 4th Principal Meridian, Wisconsin.



REGISTER'S OFFICE
 Forest County, Wis.
 Received for record this 22nd day
 of Sept. A.D., 1986 at
10:20 o'clock A.M. and recorded
 in Vol. CORNER RESTORATIONS
 page N-36
Paul Aschenbrenner
 Register of Deeds

- (b) Describe any record evidence, monument evidence, occupational evidence, testimonial evidence or any other material evidence you considered, and whether the monument was found or placed.

In 1859 James Mc Bride set a wood post and marked B.T.s as follow;
 Sugar 15" S. 54 W. 14 lks., Sugar 14" N. 11 W. 20 lks., Elm 8" N. 42 E. 29 lks.,
 Lynn 12" S. 65 E. 44 lks.

During the 1970s the Wisc. Dept. of Transportation found an iron pipe at this corner, as they were about to rebuild Highway they referenced the corner and, after construction, re-set the corner and monumented it with a concrete monument.

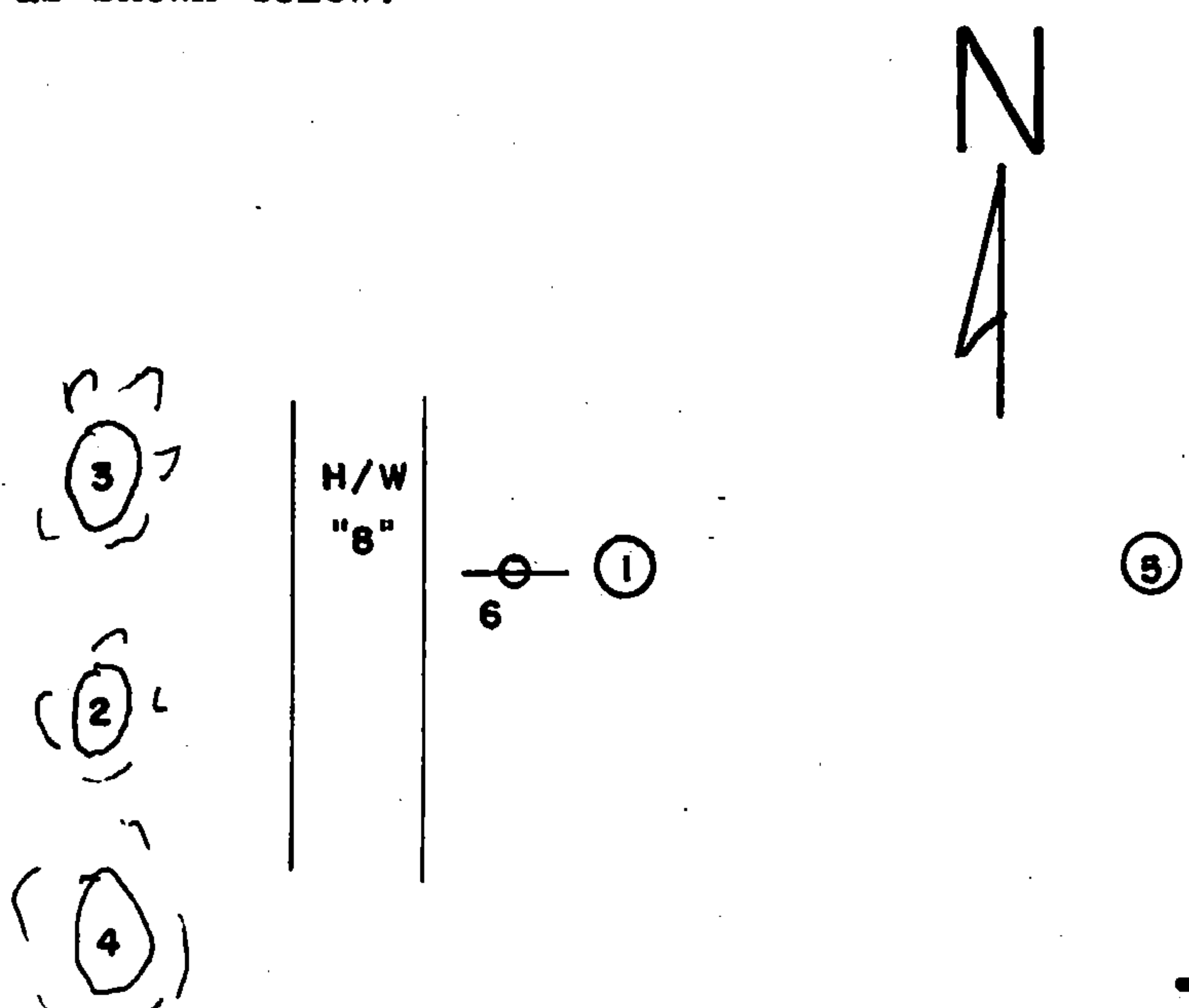
In 1986 I found the corner position marked by an 8" dia. round concrete monument with a 4" dia. brass cap set by the Wisc. D.O.T.; found Concrete Witness Mon. with brass cap East 192.6'; This corner is located in a cut caused by road construction eliminating any earlier evidence.

- (c) In the plan view drawing below, provide reference ties to at least 4 witness monuments, or, if the location is within a municipality, to at least 2 witness monuments. (Witness monuments shall be made of concrete, natural stone, iron or other equally durable material.) Describe witness monuments.

- (d) Show a plan view drawing depicting the relevant monuments and reference ties which is sufficient in detail to enable accurate relocation of the corner monument if the corner monument is disturbed. Indicate north.

I accept this position as the best available evidence and referenced as shown below.

1. D.O.T. Monument
2. B.T. Maple 10" S. 79 W. 208.9'
3. B.T. Maple 8" N. 80 W. 207.3'
4. B.T. Maple 10" S. 63 W. 225.7'
5. Conc. Witness Monument East 192.6'
6. Steel Sign Post West 0.8'



(e) Describe any material discrepancy between the location of the corner as restored or reestablished and the location of that corner as previously restored or reestablished by distance and direction. Show the discrepancy on the plan view drawing under (d), above. Show the distances between the corner as previously restored or reestablished and (1) the corner as restored or reestablished, and (2) to at least 2 of the witness monuments shown on the drawing in (d), above.

none

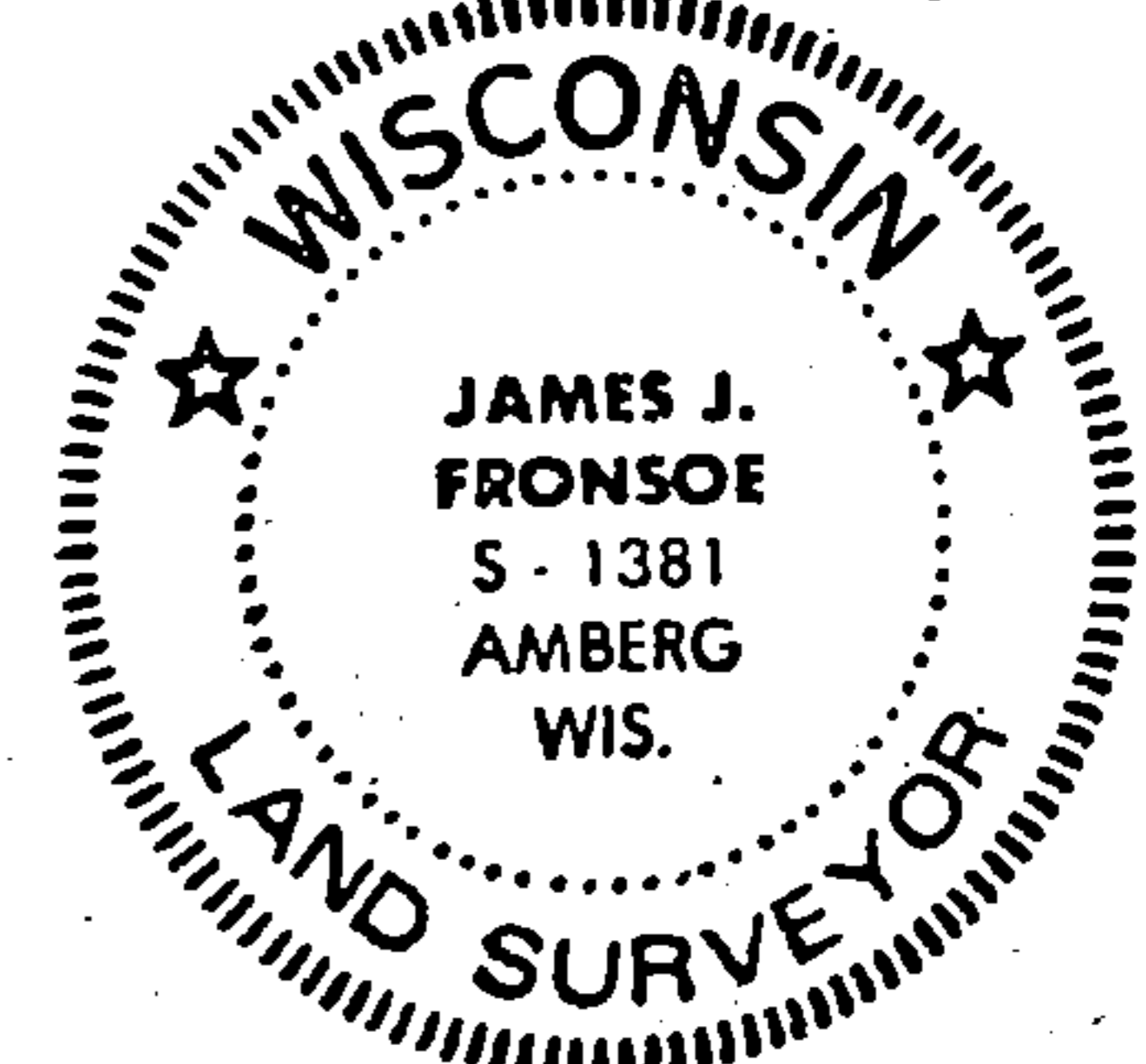
(f) Was the corner restored through acceptance of (1) an obliterated evidence location, or, (2) a found, perpetuated location?

found

(g&h) Was the corner reestablished through lost corner proportionate methods? If so, show the method, including the directions and distances to other public land survey corners used as evidence or used for proportioning in determining the corner location?

no

Affix Land Surveyor Seal



James J. Fronsoe, R.L.S.

(1) I, James J. Fronsoe, R.L.S.
(type or print name) certify that the corner location shown on this record was determined by me or under my direction and control and that this U.S. Public Land Survey Monument Record is correct and complete to the best of my knowledge and belief.

Signature

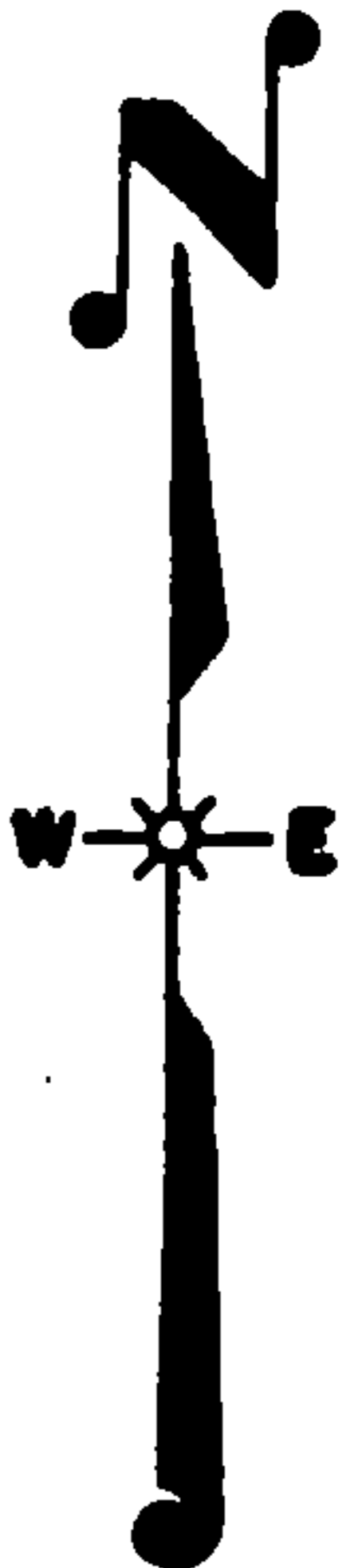
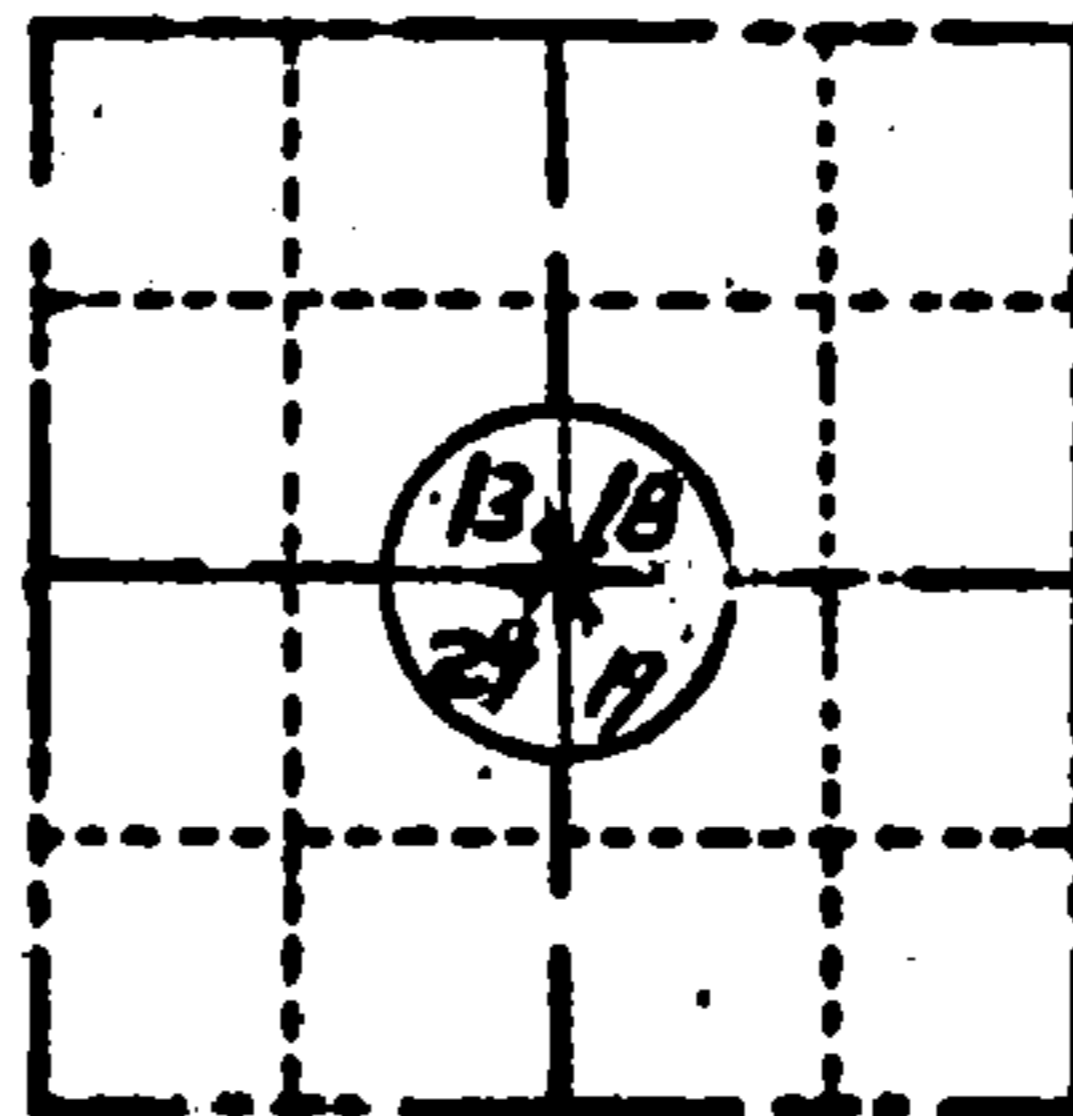
James J. Fronsoe, Sept 1986

Date

FIELD SURVEY NOTES
PRESERVATION OF LANDMARKS
(Pursuant to Section 59.635(7) Wisconsin Statutes)

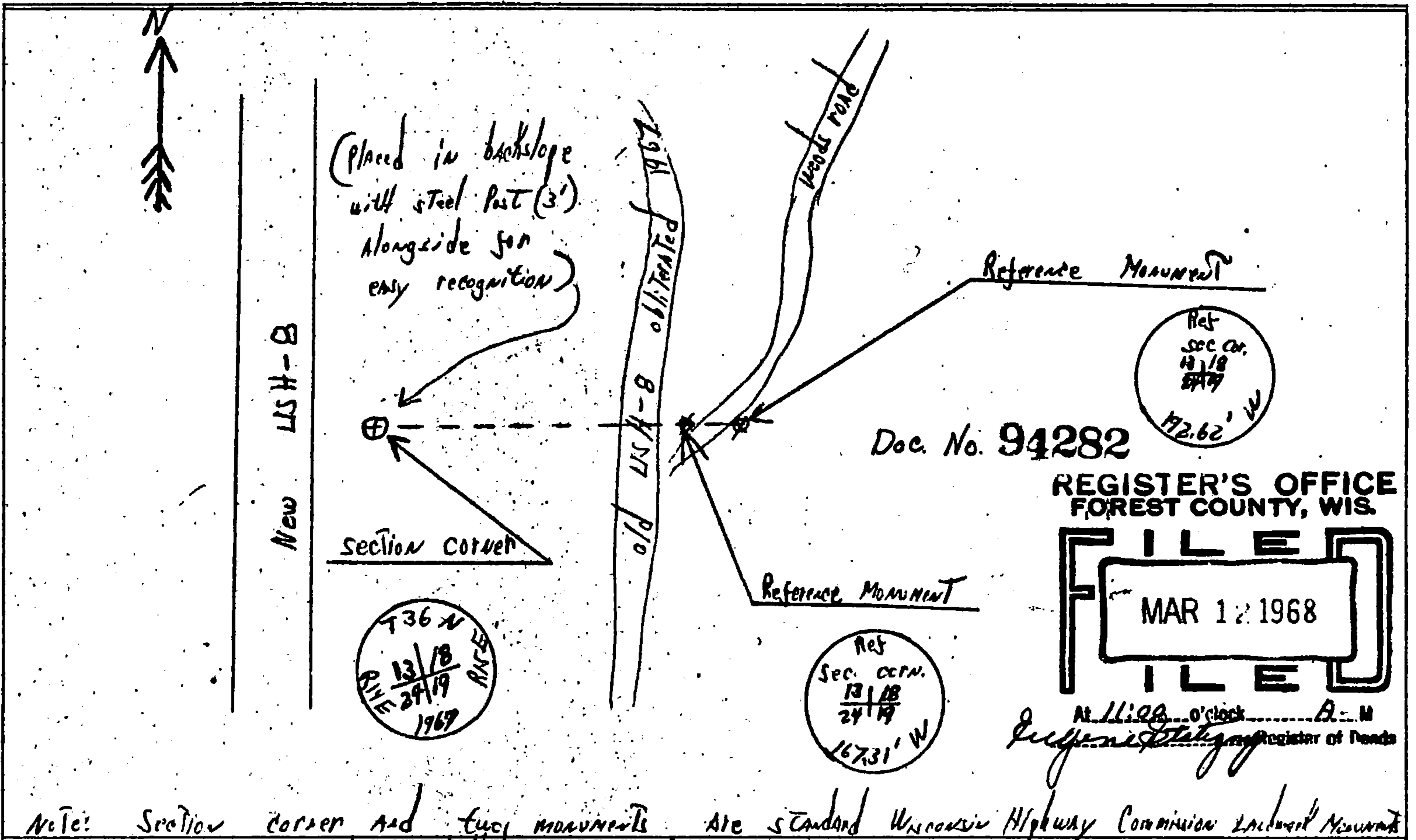
State Highway Commission of Wisconsin
Form E-D-707-65

COUNTY <i>Forest</i>		
TOWN <i>Ladona</i>		
HIGHWAY <i>USH-8</i>		
SECTION <i>13-18-21-19</i>	TOWNSHIP <i>36 North</i>	RANGE <i>11-15 East</i>
TYPE OF LANDMARK <i>Section Corner and 2 Reference</i>		



LOCATION SKETCH
(Location of landmark indicated by "x")

This space for copy of field notes or ties to the above described landmarks



Note: Section corner and two monuments are standard Wisconsin Highway Commission Landmark Monuments (Brass markers imbedded in concrete)

FILED UNDER PROJECT NUMBER <i>Forst-3(19)</i>			COUNTY CLERK'S OFFICE COUNTY OF <i>FOREST</i> WISCONSIN } 55	
SBC DISTRICT OFFICE NUMBER <i>7</i>	CITY <i>Rhinelander</i>	COUNTY <i>Oconto</i>	DATE RECEIVED FOR RECORD <i>3/11/68</i>	DATE COPY SENT TO COUNTY SURVEYOR
LOCATED OR ESTABLISHED BY NAME <i>David MAW</i> TITLE <i>Project Engineer</i> DATE <i>9-25-67</i>			SIGNATURE OF COUNTY CLERK <i>Kenneth Conway</i>	