

CERTIFIED LAND CORNER RESTORATION

Index No. J-19

State of Wisconsin

County of Forest } ss.

I Gary L. Pisoni, do hereby certify that on the 26th day of July, 1994, I found evidence of the South Quarter corner of Section 11 Township 36, North, Range 14 East, Fourth Principal Meridian, as described hereon; and that from this evidence I established a new monument and accessories as described hereon to perpetuate the original location of this corner.

Resident witnesses:

.....
.....
.....

History of original corner establishment:

Original Government Survey in 1959 by James McBride, deputy surveyor. West corrected between Sections 11 and 14 at 40.05 chains, set Quarter Section post from which the following bear: Hemlock, 7", S 46° E, 17 lks, Sugar, 14", N 53° W, 19 lks.

Description of corner evidence found:

No original corner evidence found.

I re-established the corner position at proportionate distances and on line between the Southeast and Southwest Section Corners of Section 11.

Description of monument and accessories I established to perpetuate the original location of this corner.

At the corner position, marked by a large rock, chiseled an 'X' on side of large rock and set a 2 1/2" x 36" witness corner aluminum pipe monument with an aluminum cap stamped; T36N, R14E, Witness Corner, 1/4, S.11, S.14, S 89°52.8'W, 1.70', 1994, S-1634; from which the new blazed and scribed bearing trees bear: (all measurements taken to a nail in side of tree and all measurements are to the chiseled 'X' in large rock as the 1/4 corner)

Sugar Maple	12"	N 35°E	13.66 feet
Sugar Maple	12"	S 48°E	18.70 feet
Sugar Maple	5"	S 24°W	41.97 feet
Basswood	13"	S 65°W	16.57 feet
Steel sign post		East	3.63 feet

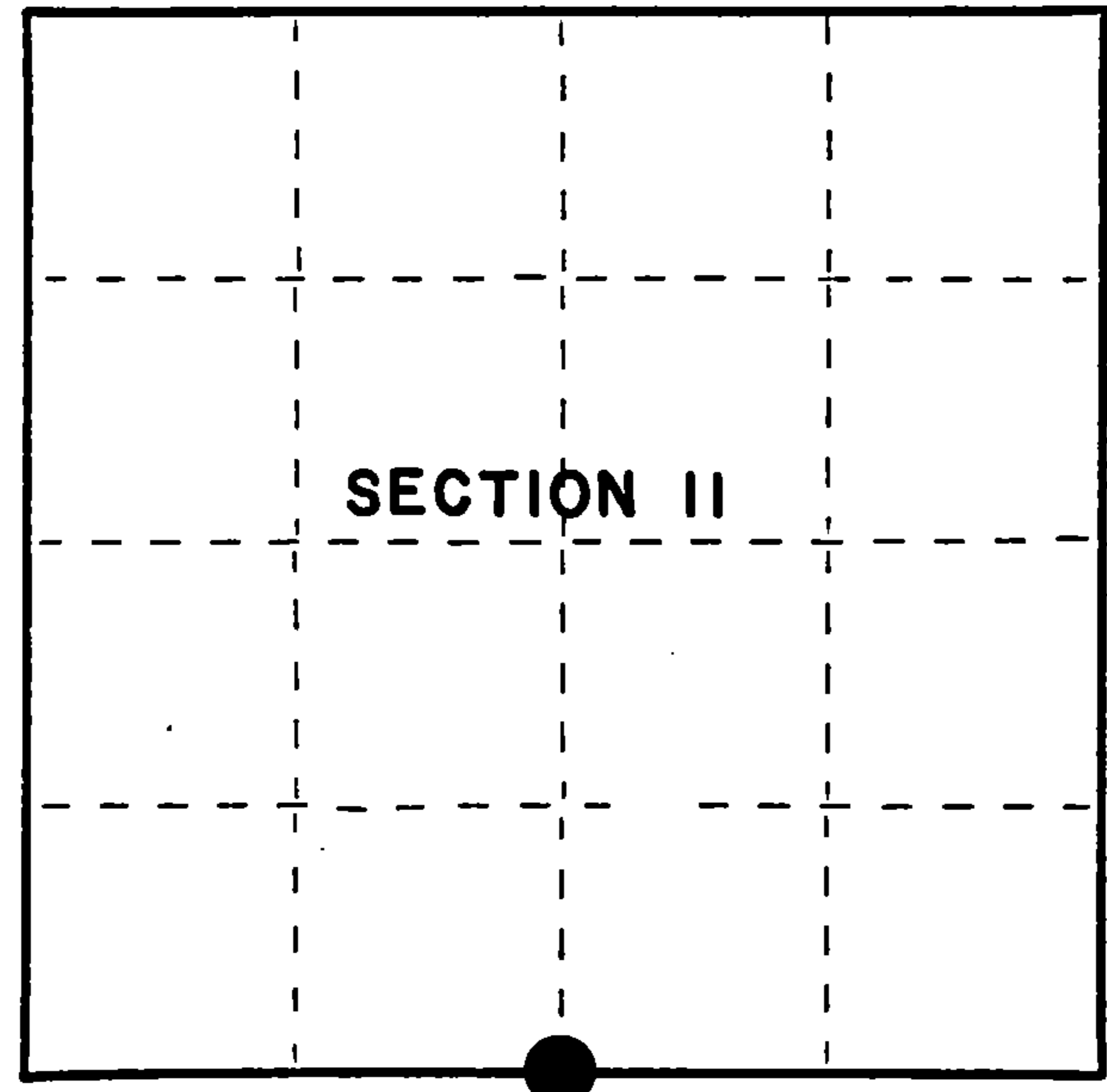
Dated at Iron River, MI, this 12th day of June, 1995

Signature Gary L. Pisoni Title Land Surveyor Registration No. S-1634
(County Surveyor, Registered Land Surveyor, or other duly authorized official)

Office of Register of Deeds, County of Forest, I hereby certify that the within instrument was filed in this office for record on the 25th day of March, 1997 at 1:30 o'clock P M.

(Register of Deeds)

By Paul Jankiewicz Deputy



● = Corner monument restored.

FORM NO. 985-A
H.C. Miller

Stock No. 26273

158099

43014110020

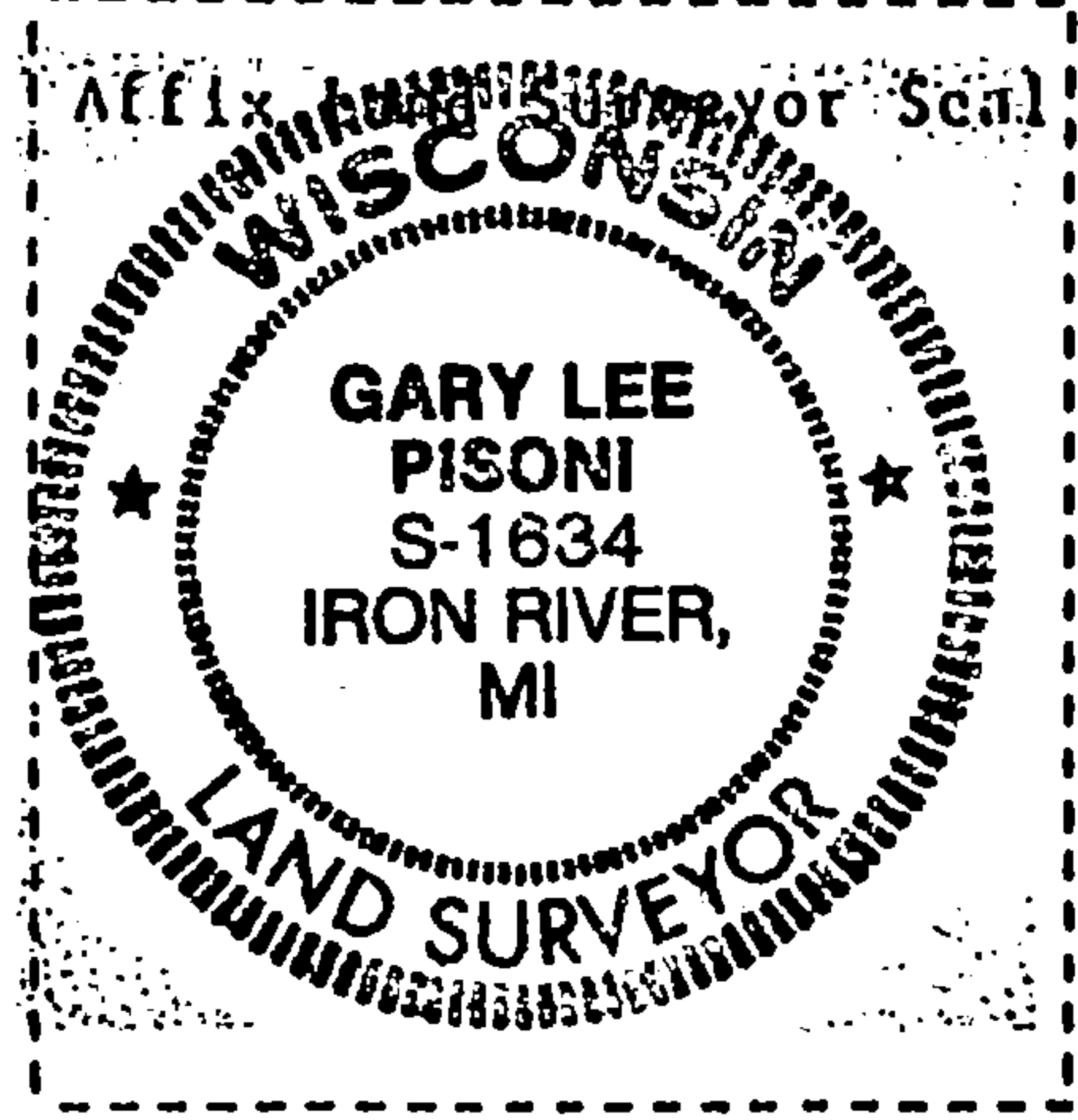
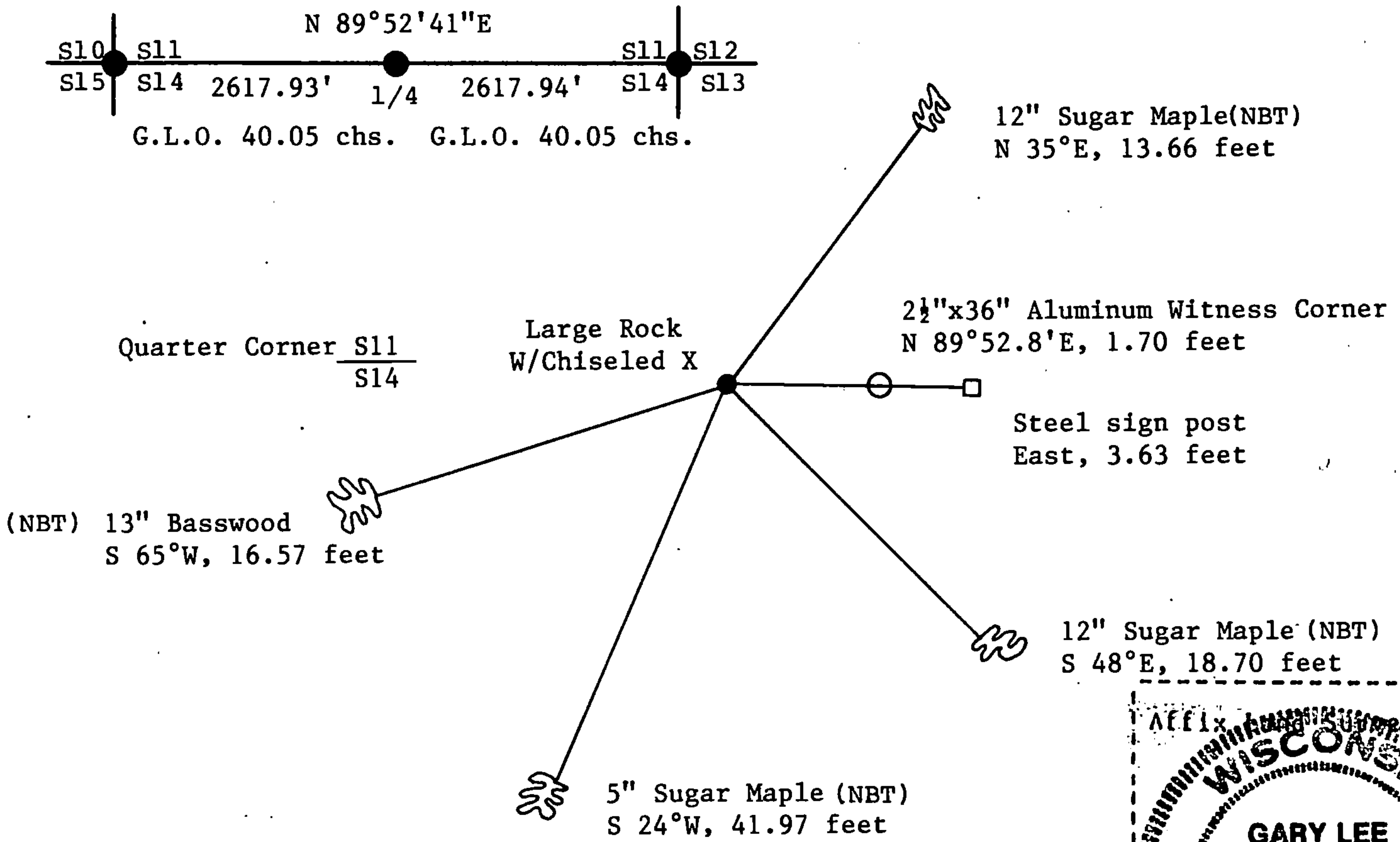
(j) Describe any material discrepancy between the location of the corner as restored or reestablished and the location of that corner as previously restored or reestablished by distance and direction. Show the discrepancy on the plan view drawing under (d), above. Show the distances between the corner as previously restored or reestablished and (1) the corner as restored or reestablished, and (2) to at least 2 of the witness monuments shown on the drawing in (d), above.

None

(r) Was the corner restored through acceptance of (1) an obliterated evidence location, or, (2) a found perpetuated location?

(gkh) Was the corner reestablished through lost corner proportionate methods? If so, show the method, including the directions and distances to other public land survey corners used as evidence or used for proportioning in determining the corner location?

Re-established through lost corner proportionate methods.



(i) I, Gary L. Pisoni
 (type or print name) certify that the corner location shown on this record was determined by me or under my direction and control and that this U.S. Public Land Survey Monument Record is correct and complete to the best of my knowledge and belief.

Gary L. Pisoni Signature 6-24-95 Date

Survey requested by: _____
 District Ranger Date