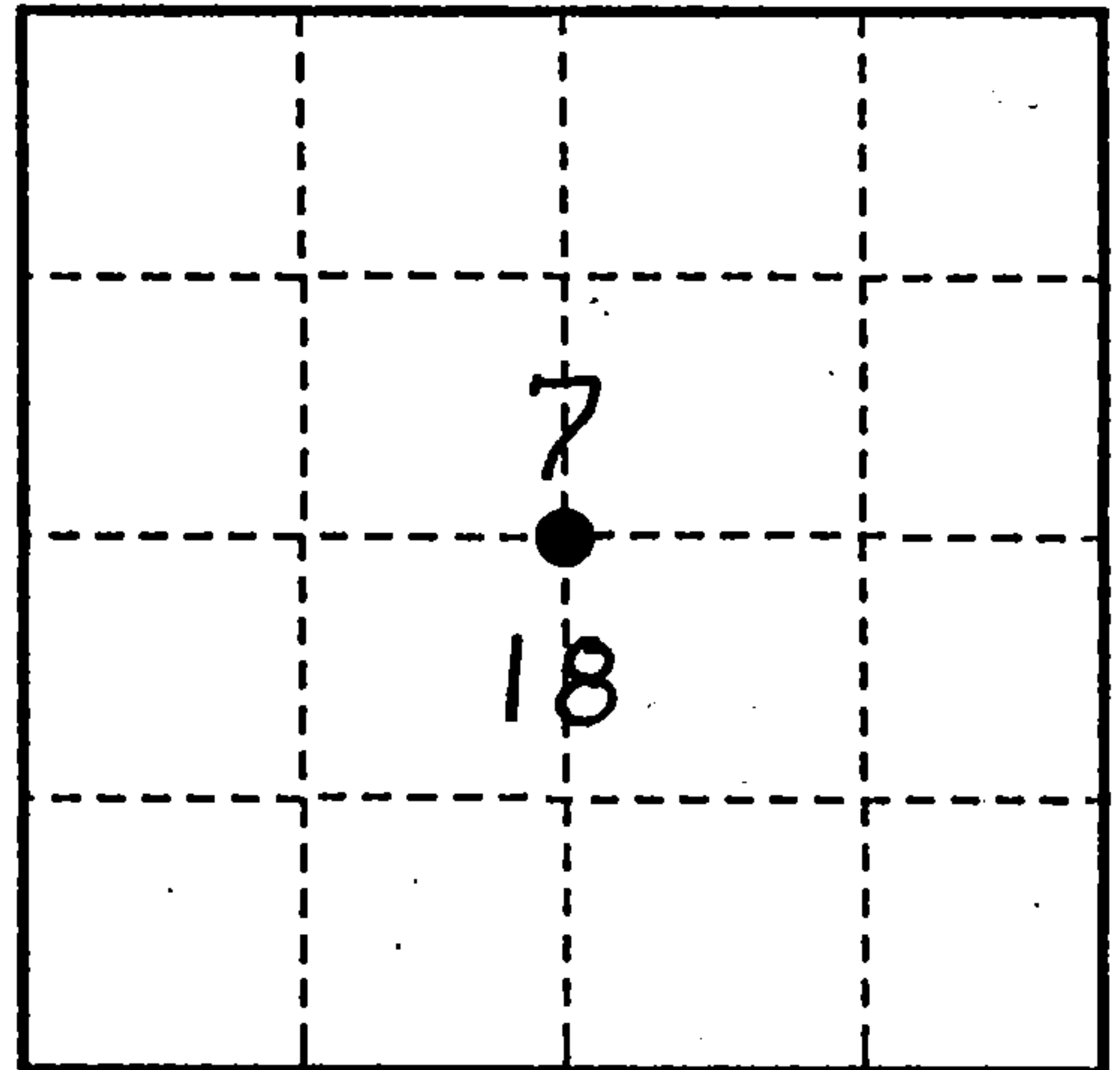


U. S. PUBLIC LAND SURVEY MONUMENT RECORD

INSTRUCTIONS: This record shall show the location of the corner and shall include all of the following nine elements (a through i).

- (a) Identify the corner by reference to the U.S. public land survey system.
O = Corner monument restored.

Quarter corner to Sections 7 & 18, T36N, R14E



- (b) Describe any record evidence, monument evidence, occupational evidence, testimonial evidence or any other material evidence you considered, and whether the monument was found or placed.

In 1859, James McBride set post with the following BT's:

- Sugar, 12", N50°E, 38 links
Hemlock, 24", S10°E, 25 links

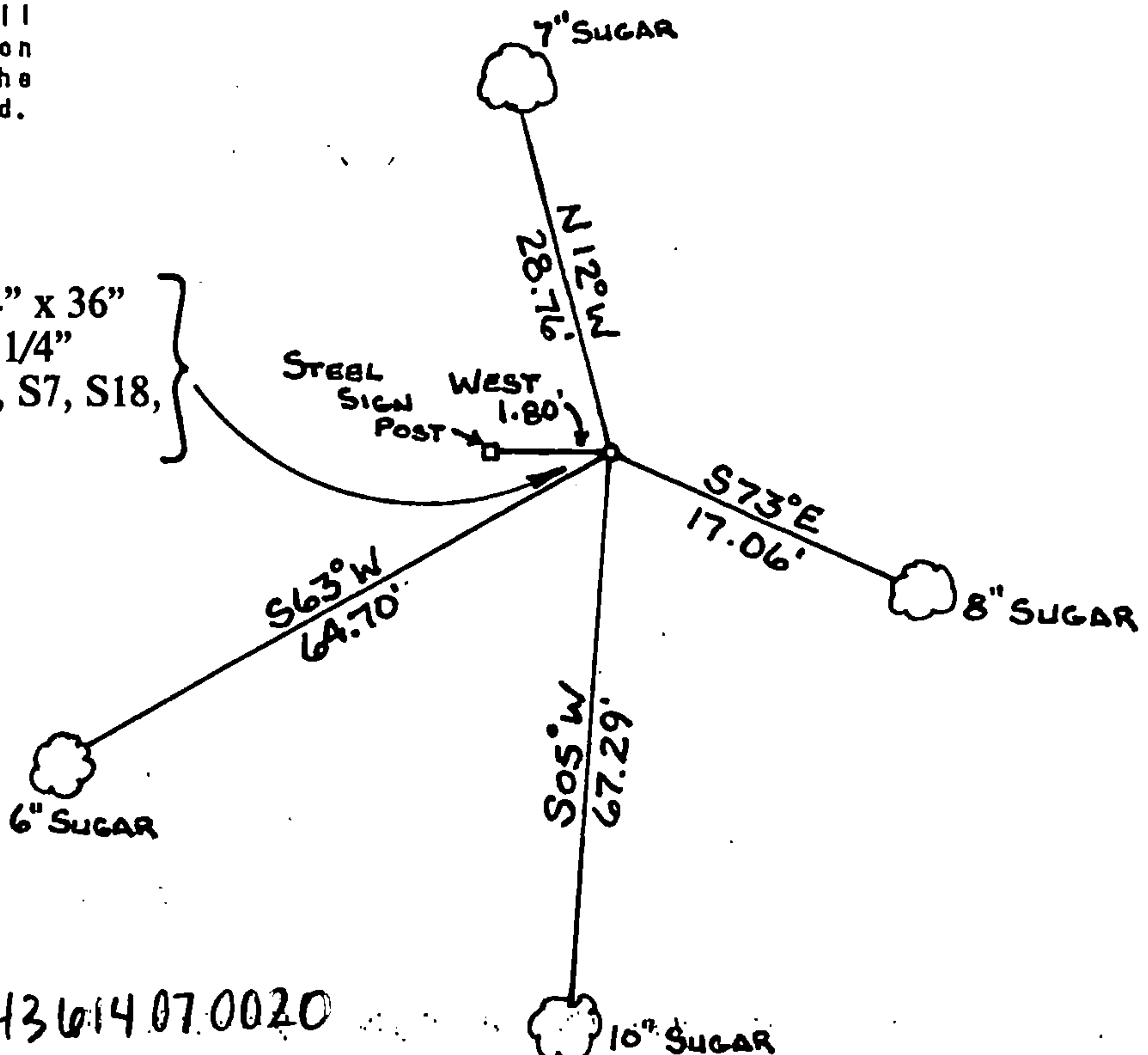
November 18, 1992, set proportionate position. Searched area, found no evidence of corner location.

I could find no evidence of the remains of the original bearing trees and, therefore, monumented the proportioned position.

- (c) In the plan view drawing below, provide reference ties to at least 4 witness monuments, or, if the location is within a municipality, to at least 2 witness monuments. (witness monuments shall be made of concrete, natural stone, iron or other equally durable material.)

- (d) Show a plan view drawing depicting the relevant monuments and reference ties which is sufficient in detail to enable accurate relocation of the corner monument if the corner monument is disturbed. Indicate north.

On January 6, 1993, set a 2 1/4" x 36" aluminum monument with a 3 1/4" aluminum tablet stamped: 1/4, S7, S18, T36N, R14E, 1993, S1685



REGISTER'S OFFICE
Forest County, Wis.
Received for record this 2nd day of June A.D. 1993 at 2 o'clock P.M. and recorded in Vol. 300 Restorations page 3.
[Signature] Deputy Register of Deeds

