

CERTIFIED LAND CORNER RESTORATION  
U.S. Public Land Survey Monument Record

State of Wisconsin }  
County of Forest } ss.

History of original corner establishment:  
Original corner established by James McBride, government deputy surveyor in 1859 from which Hemlock 8" bears N17E 14 links and Birch 8" S15W 15 links.

I Glen Barker, do hereby certify that on the 5th day of January, 19 89, I ~~found~~ ~~relocated~~ ~~re-established~~ ~~the~~ ~~1/4~~ corner of Section 5 & 8 Township 36, North, Range 14 East, Fourth Principal Meridian, as described hereon; and that from this evidence I established a new monument and accessories as described hereon to perpetuate the original location of this corner.

Description of corner evidence found:  
Set 1/4 corner on proportionate method.  
Total distance from SW Section Corner to SE Section Corner of Section 5 is 5560.70'. Set 1/4 corner at 2780.35' intermediate.

Resident witnesses:

Norm Spiess

Don Broadbridge

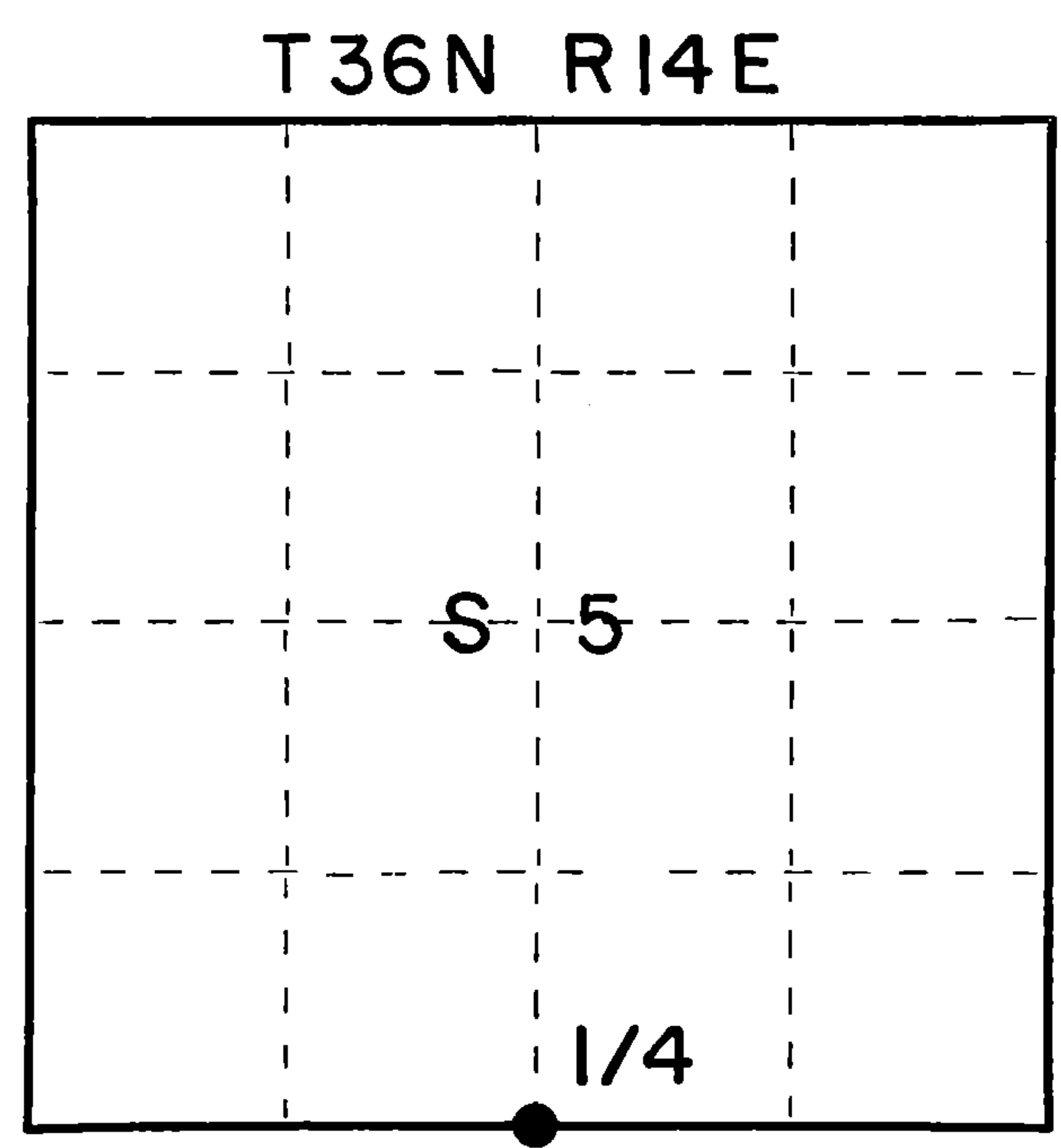
Description of monument and accessories I established to perpetuate the original location of this corner.  
Set a 2 1/4" Forest County aluminum monument with a 3 1/4" alloy cap stamped: Monument projects 6" above ground.

Marked NBT:  
Maple 10" N6 W 19.75'  
Sugar 4" N61E 26.17'  
Maple 4" S71E 27.63'  
Maple 6" S27W 59.44'

T36N R14E  
1/4  $\frac{S}{S}$   $\frac{5}{8}$   
1989  
S-1682  
Forest County

DOCUMENT NUMBER  
**137127**

FORM 985 K. C. MILLER CO., MILWAUKEE



○ = Corner monument restored.

Dated at Rhineland, Wis., this 14th day of March, 19 89.

Signature Glen Barker Title Registered Land Surveyor Registration No. 1682  
(County Surveyor, Registered Land Surveyor, or other duly authorized official)

Office of Register of Deeds, County of Forest, I hereby certify that the within instrument was filed in this office for record on the 31st day of March, 1989 at 10:25 o'clock A. M.

Paul Aschenbrenner  
(Register of Deeds)

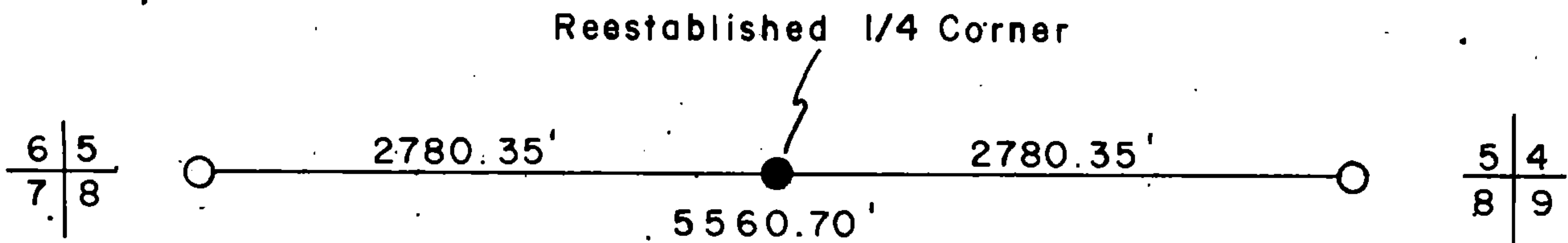
By \_\_\_\_\_ Deputy

43614050020

(j) Describe any material discrepancy between the location of the corner as restored or reestablished and the location of that corner as previously restored or reestablished by distance and direction. Show the discrepancy on the plan view drawing under (d), above. Show the distances between the corner as previously restored or reestablished and (1) the corner as restored or reestablished, and (2) to at least 2 of the witness monuments shown on the drawing in (d), above.

(f) Was the corner restored through acceptance of (1) an obliterated evidence location, or, (2) a found perpetuated location?

(g&h) Was the corner reestablished through lost corner proportionate methods? If so, show the method, including the directions and distances to other public land survey corners used as evidence or used for proportioning in determining the corner location?



(i) I, Glen Barker  
 (type or print name) certify that the corner location shown on this record was determined by me or under my direction and control and that this U.S. Public Land Survey Monument Record is correct and complete to the best of my knowledge and belief.

Glen Barker  
 Signature

3/14/89  
 Date