

CERTIFIED LAND CORNER RESTORATION
U.S. PUBLIC LAND SURVEY

Index No. C-21

History of original corner establishment:

Original corner established by James McBride, Gov't Deputy Surveyor in 1859, from which 8" Cedar bears N20E, 18 lks. and 10" Spruce bears N60W, 17 lks.

State of Wisconsin }
County of FOREST } ss.

I, Glen Barker, do hereby certify that on the 23rd day of July, 1991, I found evidence of the Quarter corner of Sections 1 & 2 Township 36, North, Range 14 East, Fourth Principal Meridian, as described hereon; and that from this evidence I established a new monument and accessories as described hereon to perpetuate the original location of this corner.

Resident witnesses:

N. Spiess

J. Spiess

Description of corner evidence found:

Re-established Quarter Section Corner on a proportionate measurement to the G.L.O. Survey of 1859.

Total distance from the Southwest Section Corner to the Northwest Section Corner of Section 1 is 5396.11'.

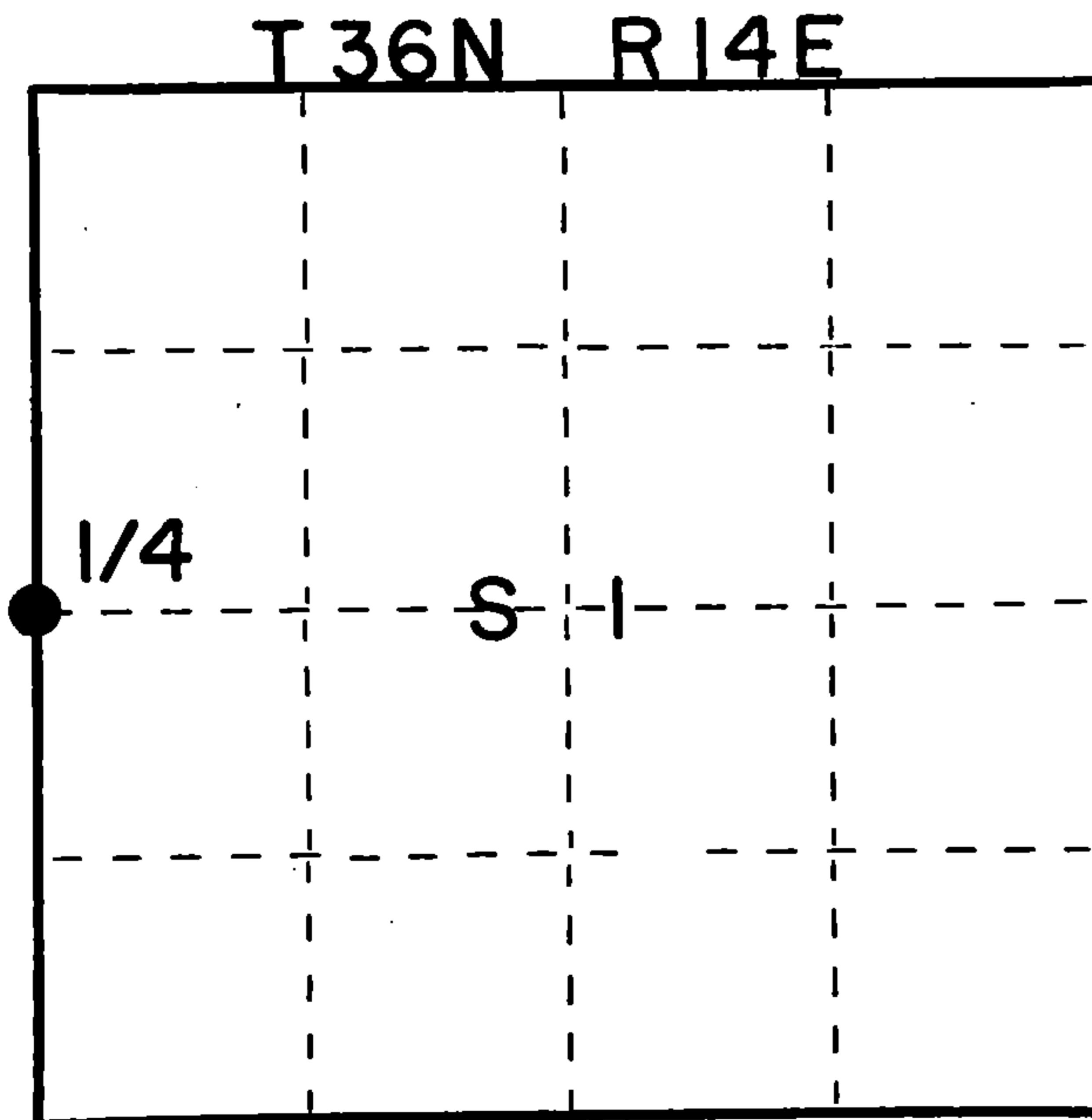
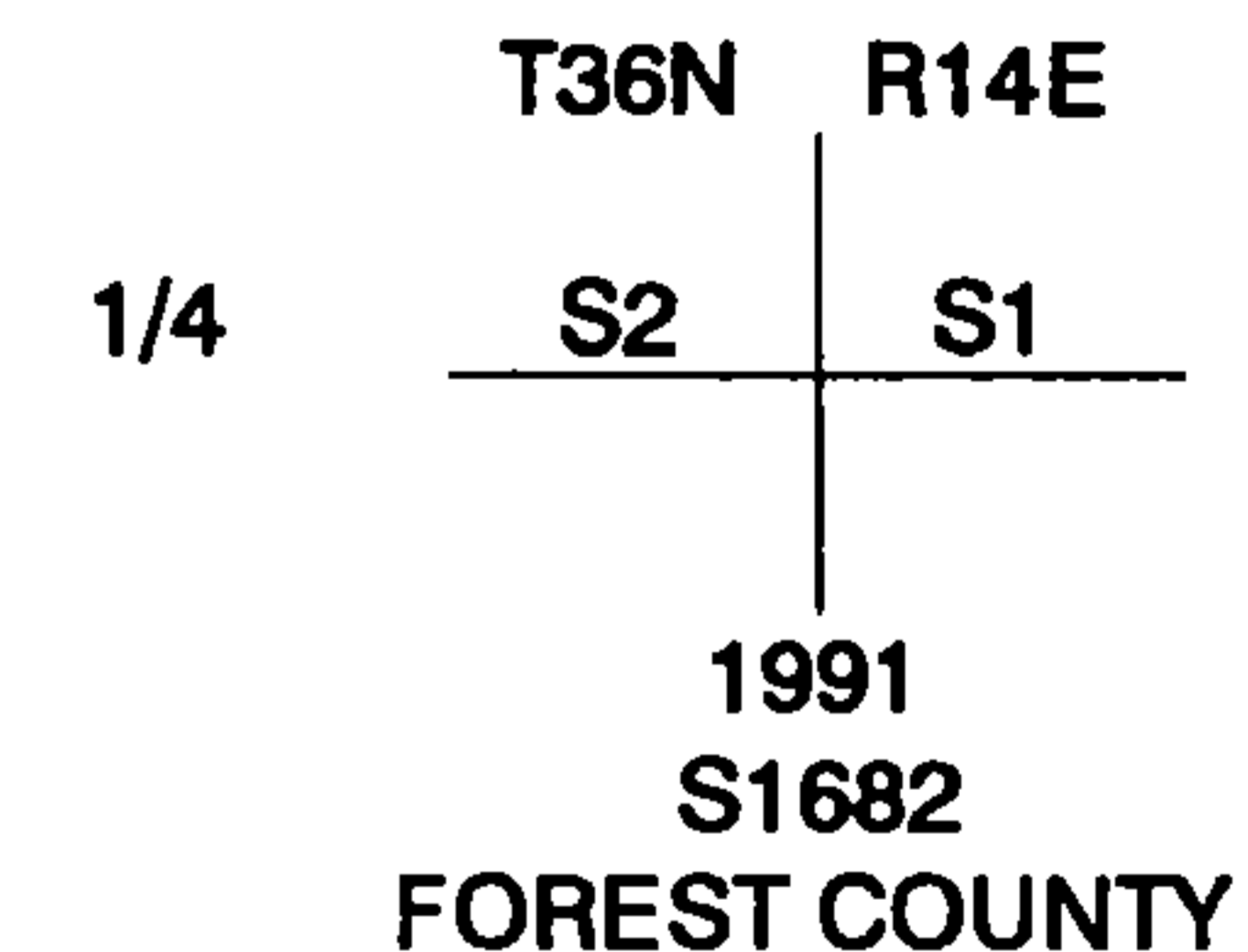
Set Quarter Section Corner 2704.14' of Southwest Section Corner and 2691.97' of Northwest Section Corner on a straight line between the two.

Description of monument and accessories I established to perpetuate the original location of this corner.

Set a 2-1/4" Forest County Aluminum pipe with 3-1/4" alloy cap.

Marked N.B.T.'s:

Cedar 5"	S40E	16.58'
Cedar 8"	S28W	29.30'
Cedar 10"	N89W	32.03'
Cedar 8"	N2E	26.61'



○ = Corner monument restored.

Dated at Rhineland, Wis., this 12th day of December, 1991

Signature Glen Barker Title Registered Land Surveyor Registration No. S-1682
(County Surveyor, Registered Land Surveyor, or other duly authorized official)

Office of Register of Deeds, County of Forest, I hereby certify that the within instrument was filed in this office for record on the 13th day of August, 1992 at 9:30 o'clock A. M.

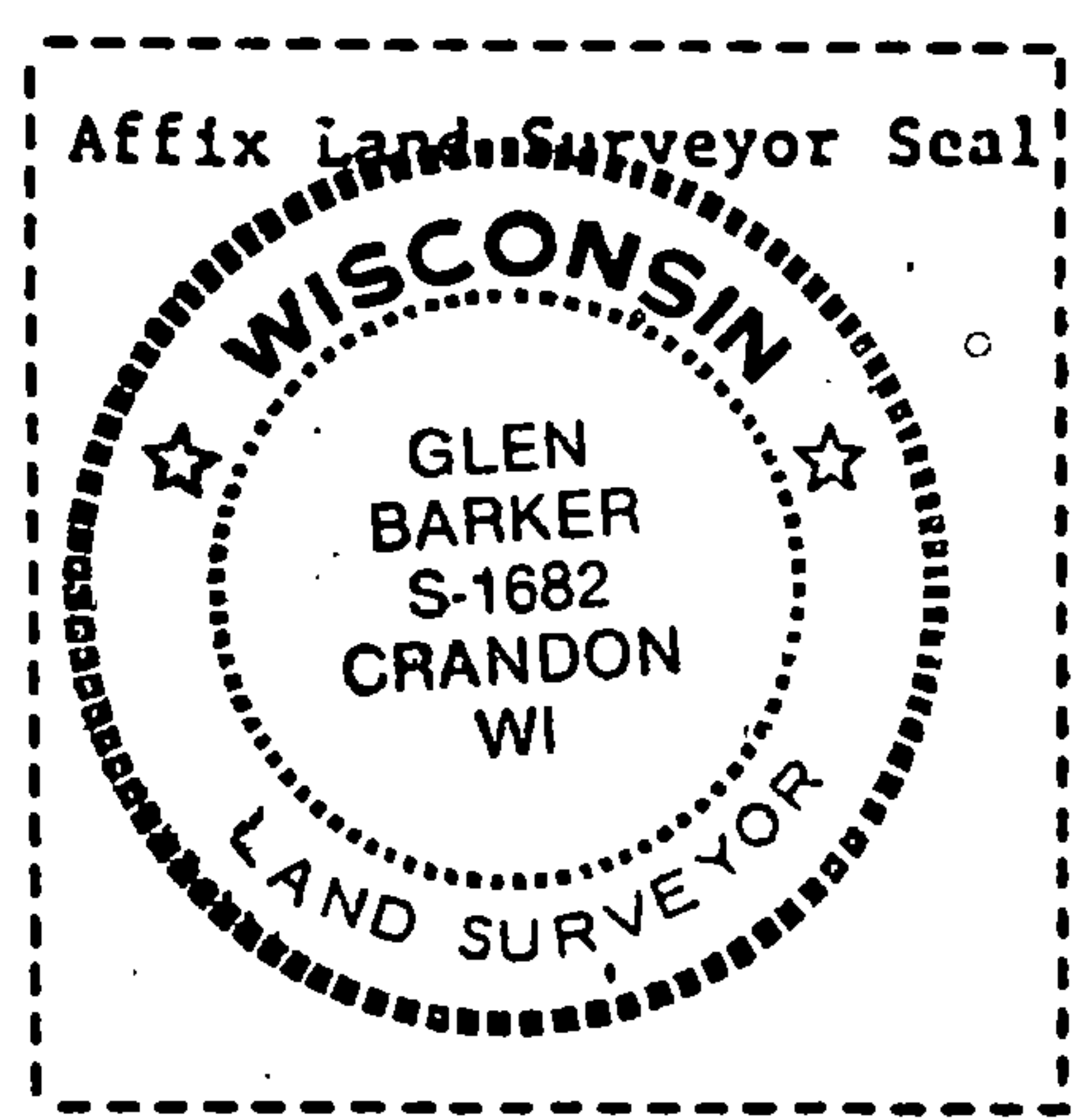
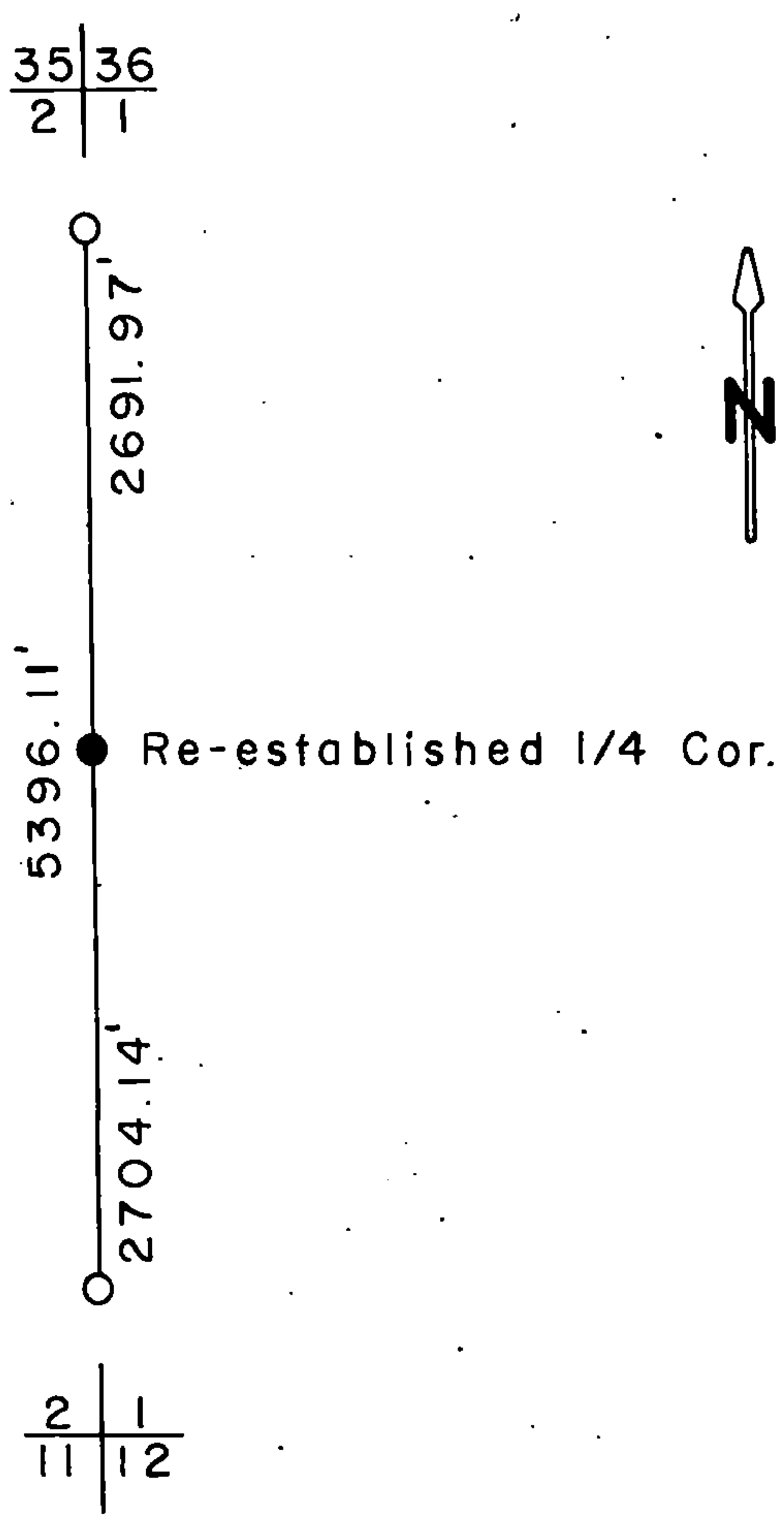
Paul Achenbrenner
(Register of Deeds)

By _____ Deputy

e) Describe any material discrepancy between the location of the corner as restored or reestablished and the location of that corner as previously restored or reestablished by distance and direction. Show the discrepancy on the plan view drawing under (d), above. Show the distances between the corner as previously restored or reestablished and (1) the corner as restored or reestablished, and (2) to at least 2 of the witness monuments shown on the drawing in (d), above.

(f) Was the corner restored through acceptance of (1) an obliterated evidence location, or, (2) a found perpetuated location?

(g&h) Was the corner reestablished through lost corner proportionate methods? If so, show the method, including the directions and distances to other public land survey corners used as evidence or used for proportioning in determining the corner location?



(i) I, GLEN BARKER
 (type or print name) certify that the corner location shown on this record was determined by me or under my direction and control and that this U.S. Public Land Survey Monument Record is correct and complete to the best of my knowledge and belief.

Glen Barker
 Signature

12/12/92
 Date