

REGISTER'S OFFICE  
Forest County, Wis.  
Received for record this 18<sup>th</sup> day  
of November A.D., 2005 at  
3:55 o'clock P. M. and recorded  
in Vol. Corner Restoration  
page Z-19  
Kay Swanson, Deputy  
Register of Deeds

Document Number  
  
189324

U.S. PUBLIC LAND SURVEY MONUMENT RECORD

(AS REQUIRED BY S. A-E 5.02, WI ADM. CODE)

HISTORY OF ORIGINAL CORNER ESTABLISHMENT AND SUBSEQUENT RESTORATIONS AND DESCRIPTION OF ANY RECORD, MONUMENT, OCCUPATIONAL, TESTIMONIAL, OR OTHER EVIDENCE CONSIDERED:

1858 - ALFRED MILLARD, SURVEYOR, SET POST

SET THE FOLLOWING WITNESSES:  
YELLOW BIRCH 12" N58°W 31 LINKS  
HEMLOCK 24" S20°W 5 LINKS

1938 - C.E. WALKER, SET 2" IRON PIPE 5' LONG WITH BRASS CAP.

1976 - THOMAS R. ARNOTT, SURVEYOR, S-887, FOUND MONUMENT SET BY C.E. WALKER.

SET THE FOLLOWING WITNESSES:  
MAPLE 8" N56°W 12.66 FEET  
MAPLE 8" N79°E 30.56 FEET

CORNER WAS: (CHECK ALL THAT APPLY)

- ☐ RESTORED THROUGH ACCEPTANCE OF AN OBLITERATED LOCATION  
☒ RESTORED THROUGH ACCEPTANCE OF A FOUND PERPETUATED LOCATION  
☐ CONSIDERED A LOST CORNER AND REESTABLISHED THROUGH LOST CORNER PROPORTIONATE METHODS (INCLUDING A PLAN VIEW DRAWING SHOWING DISTANCES AND DIRECTIONS TO OTHER PUBLIC LAND SURVEY CORNERS USED FOR PROPORTIONING AND DETERMINING THE CORNER LOCATION)  
☐ RESTORED OF REESTABLISHED IN A LOCATION THAT DIFFERS FROM A PREVIOUS RESTORATION OF REESTABLISHMENT (INCLUDE A PLAN VIEW DRAWING AND INDICATE WHAT WAS SET AND/OR FOUND)

DESCRIBE THE MONUMENT AND ACCESSORIES USED TO PERPETUATE THE LOCATION OF THIS CORNER. (INCLUDE A PLAN VIEW DRAWING AND INDICATE WHAT WAS SET AND/OR FOUND)

FOUND 2" IRON PIPE w/BRASS CAP.

FOUND THE FOLLOWING WITNESSES:

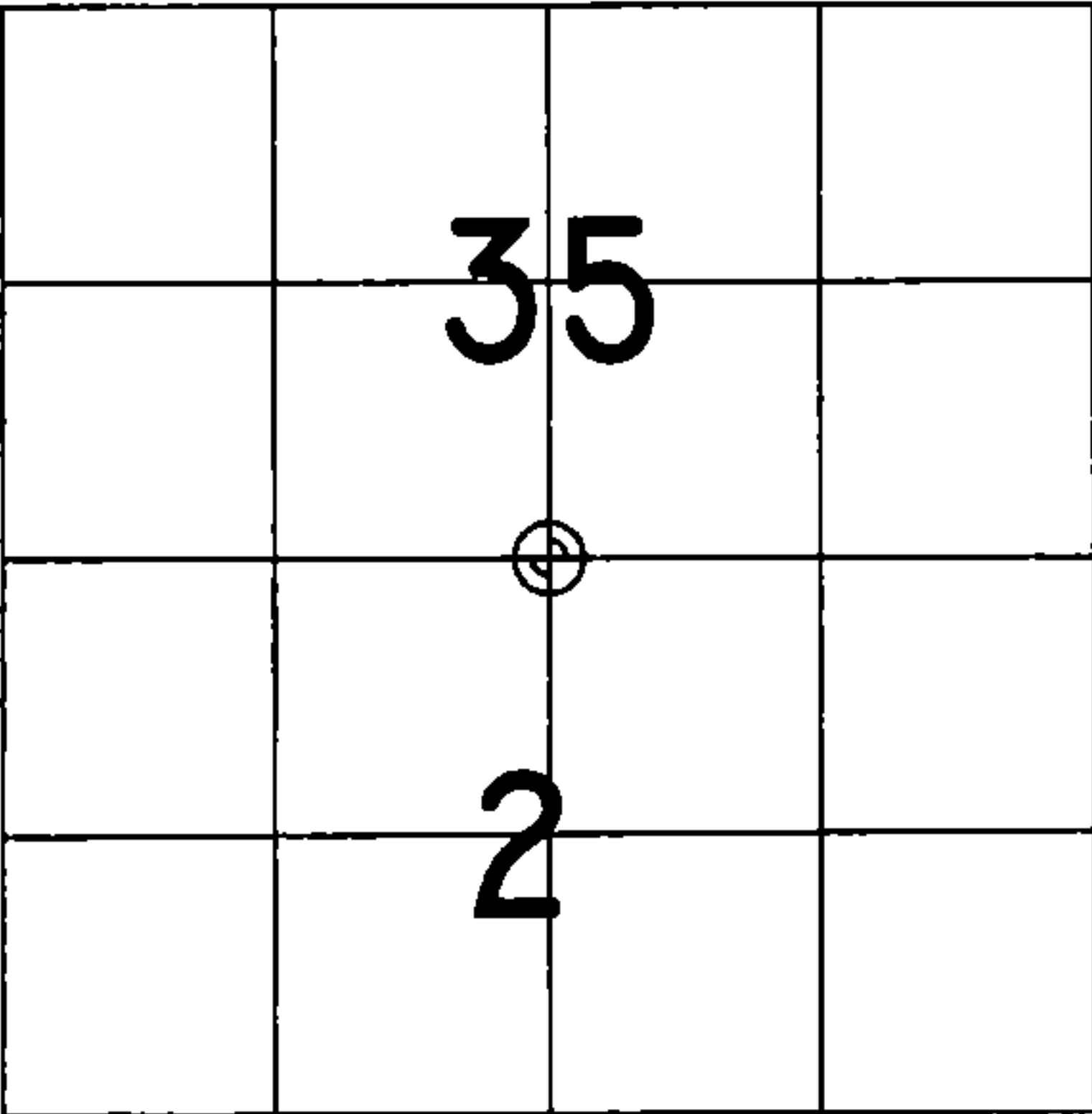
SUGAR MAPLE 12" NORTH 28.77 FEET - SET D.H. NAIL IN TREE.  
SUGAR MAPLE 11" N82°E 30.62 FEET - SET D.H. NAIL IN TREE.

SET THE FOLLOWING WITNESSES:

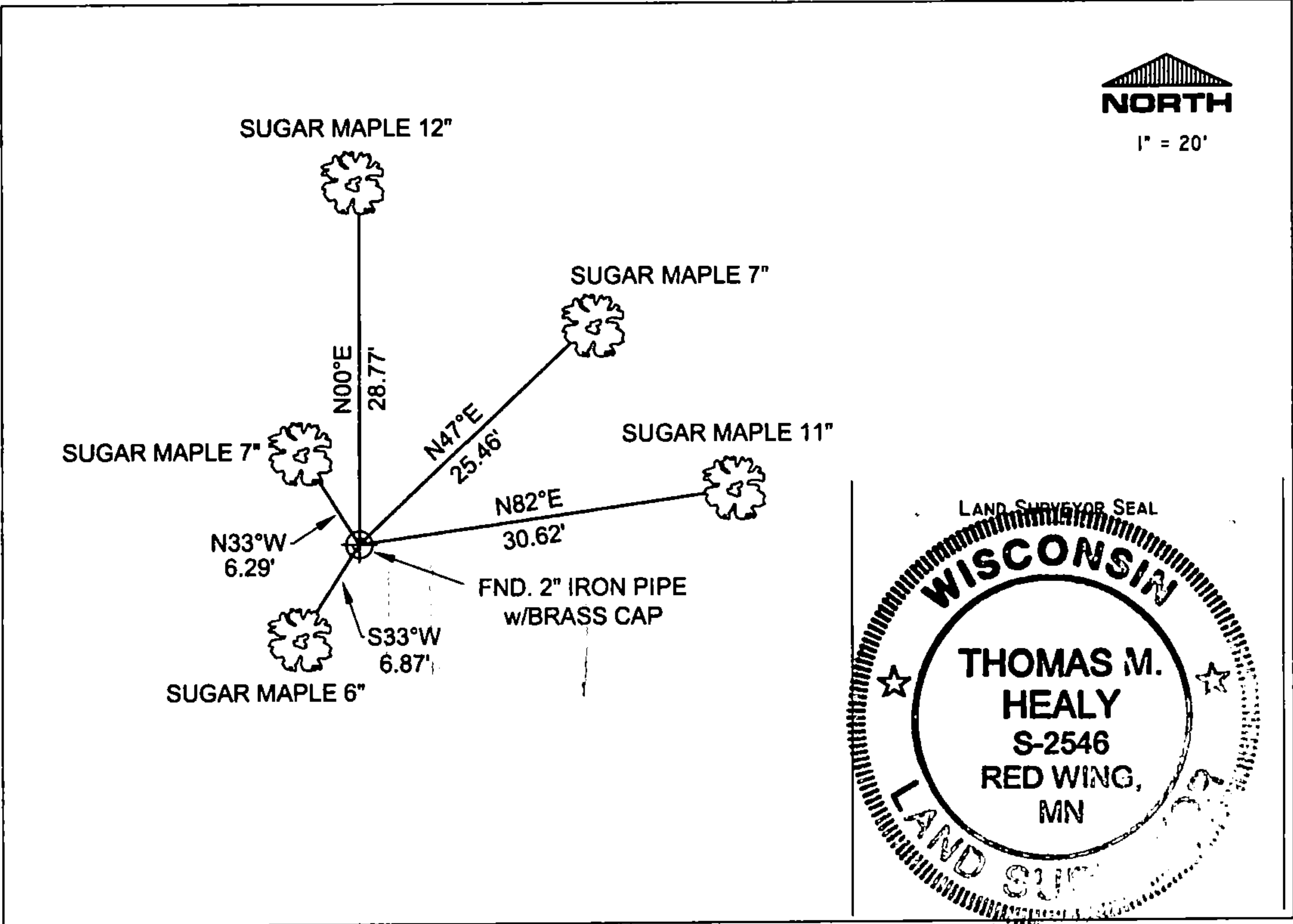
SUGAR MAPLE 7" N47°E 25.46 FEET - SET D.H. NAIL IN TREE.  
SUGAR MAPLE 6" S33°W 6.87 FEET - SET D.H. NAIL IN TREE.  
SUGAR MAPLE 7" N33°W 6.29 FEET - SET D.H. NAIL IN TREE.

ALL TREES HAVE CHEST & STUMP BLAZES.

THE SOUTH 1/4  
CORNER OF SECTION 35,  
T. 36 N., R. 13 E.,  
FOREST COUNTY, WISCONSIN



⊕ = LOCATION OF CORNER



I, THOMAS M. HEALY R.L.S. 2546

(TYPE OR PRINT NAME) CERTIFY THAT THE CORNER LOCATION SHOWN ON THIS ABOVE RECORD WAS DETERMINED BY ME OR UNDER MY DIRECTION AND CONTROL AND THAT THIS U.S. PUBLIC LAND SURVEY MONUMENT RECORD IS CORRECT AND COMPLETE TO THE BEST OF MY KNOWLEDGE AND BELIEF.

INDEX No. Z-19

Th. M. Healy 11-17-05  
SIGNATURE DATE

4361335 0020

Z-19

State of Wisconsin }  
County of Forest } ss.

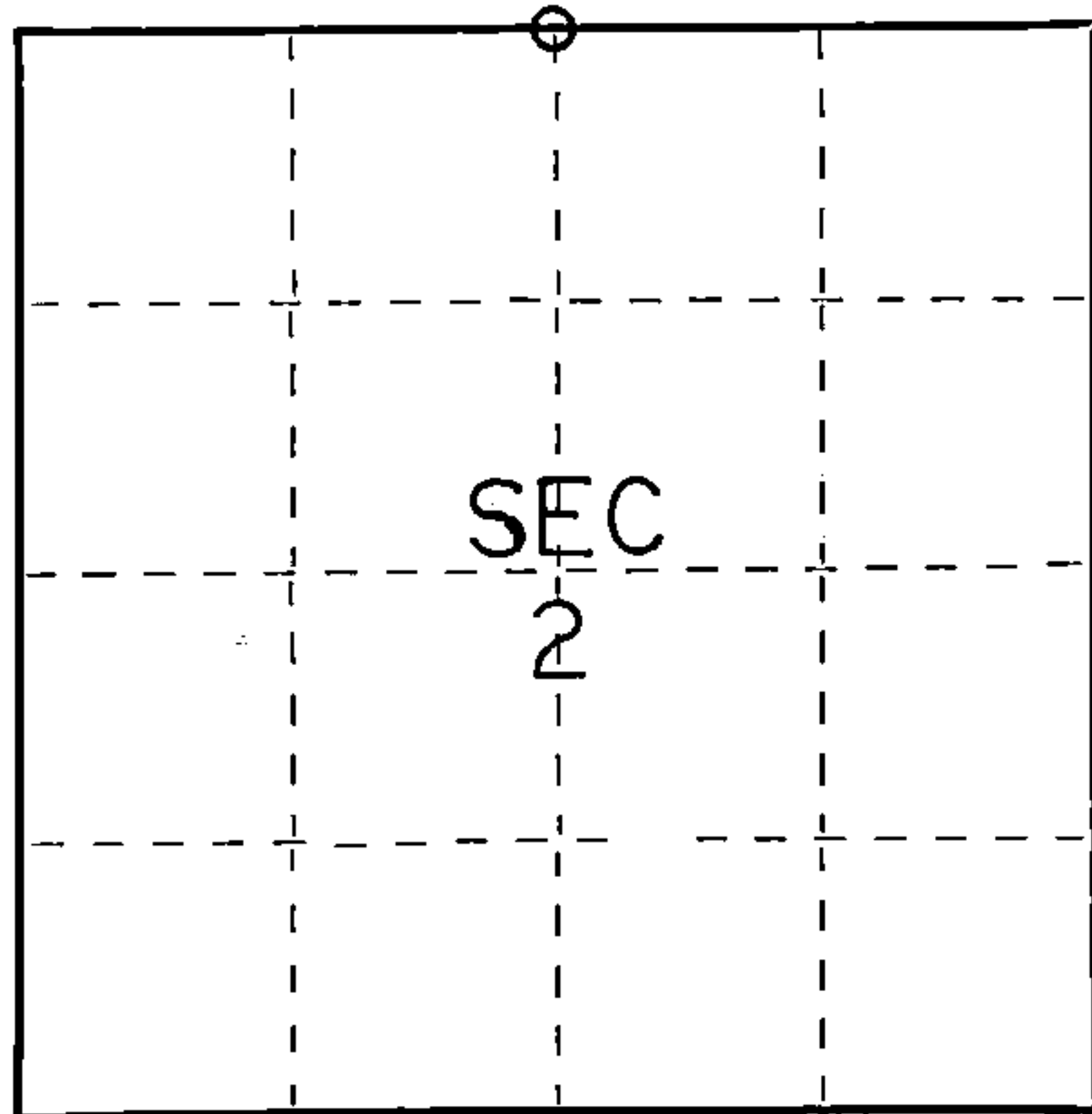
I Thomas R. Arnott, do hereby  
certify that on the 27th day  
of December, 19 75, I found  
evidence of the 1/4  
corner of sections 2 & 35  
Township 35 & 36, North, Range  
13 E, Fourth Principal Meridian,  
as described hereon; and that from this evidence  
I established a new monument and accessories  
as described hereon to perpetuate the original  
location of this corner.

Resident witnesses:

\_\_\_\_\_

\_\_\_\_\_

\_\_\_\_\_



○ = Corner monument restored.

# CERTIFIED LAND CORNER RESTORATION

Index No. A-19

History of original corner establishment:

Y. Birch	12	N58W	31 Lks.
Hemlock	24	S20W	5 Lks.

Description of corner evidence found:

2" iron pipe 5' long with brass cap set by C.E. Walker in 1938

Description of monument and accessories I established to perpetuate the original location of this corner.

Left monument set by Walker

Ties:

Maple	8	N56W	12.66 feet
Maple	8	N79E	30.56 feet



Dated at Crandon, Wis., this 8th day of January, 19 76.

Signature Thomas R. Arnott Title Surveyor Registration No. S-887  
(County Surveyor, Registered Land Surveyor, or other duly authorized official)

Office of Register of Deeds, County of Forest, I hereby certify that the within  
instrument was filed in this office for record on the 8th day of January, 19 76  
at 11 o'clock A. M.

Eugene Staszny Document Number 108520  
(Register of Deeds)

By \_\_\_\_\_ Deputy

43613350020