

Document Number

189312

REGISTER'S OFFICE
Forest County, Wis.
Received for record this 18th day
of November A.D., 2005 at
3:55 o'clock P.M. and recorded
in Vol. Corner Restoration
page X-17

Kay Swanson, Deputy
Register of Deeds

U.S. PUBLIC LAND SURVEY MONUMENT RECORD

(AS REQUIRED BY S. A-E 5.02, WI ADM. CODE)

HISTORY OF ORIGINAL CORNER ESTABLISHMENT AND SUBSEQUENT RESTORATIONS AND DESCRIPTION OF ANY RECORD, MONUMENT, OCCUPATIONAL, TESTIMONIAL, OR OTHER EVIDENCE CONSIDERED:

1865 - JAMES L. NOWLIN, SURVEYOR, SET POST

SET THE FOLLOWING WITNESSES:
HEMLOCK 15" N40°E 4 LINKS
BIRCH 8" N38°W 35 LINKS

1938 - C.E. WALKER, SET 2" IRON PIPE 5' LONG WITH BRASS CAP.

1976 - THOMAS R. ARNOTT, SURVEYOR, S-887, FOUND MONUMENT SET BY C.E. WALKER.

SET THE FOLLOWING WITNESSES:
BALSAM 10" N13°E 12.09 FEET
MAPLE 6" S88°E 13.63 FEET
BALSAM 10" S64°W 18.02 FEET

CORNER WAS: (CHECK ALL THAT APPLY)

- RESTORED THROUGH ACCEPTANCE OF AN OBLITERATED LOCATION
- RESTORED THROUGH ACCEPTANCE OF A FOUND PERPETUATED LOCATION
- CONSIDERED A LOST CORNER AND REESTABLISHED THROUGH LOST CORNER PROPORTIONATE METHODS (INCLUDING A PLAN VIEW DRAWING SHOWING DISTANCES AND DIRECTIONS TO OTHER PUBLIC LAND SURVEY CORNERS USED FOR PROPORTIONING AND DETERMINING THE CORNER LOCATION)
- RESTORED OR REESTABLISHED IN A LOCATION THAT DIFFERS FROM A PREVIOUS RESTORATION OF REESTABLISHMENT (INCLUDE A PLAN VIEW DRAWING AND INDICATE WHAT WAS SET AND/OR FOUND)

DESCRIBE THE MONUMENT AND ACCESSORIES USED TO PERPETUATE THE LOCATION OF THIS CORNER. (INCLUDE A PLAN VIEW DRAWING AND INDICATE WHAT WAS SET AND/OR FOUND)

FOUND 2" IRON PIPE w/BRASS CAP.

FOUND THE FOLLOWING WITNESSES:

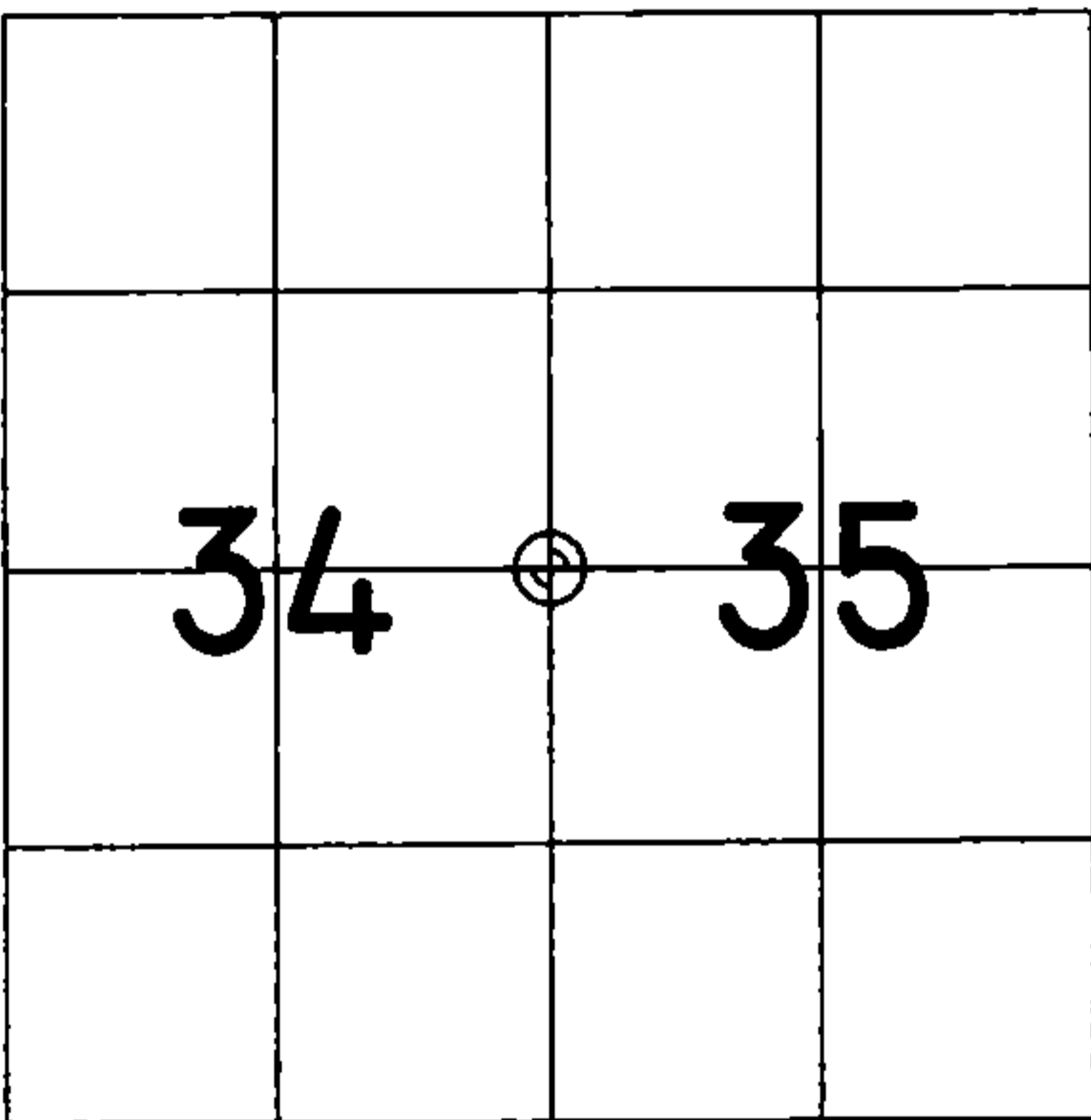
MAPLE 12" N22°E 37.49 FEET - SET D.H. NAIL IN TREE.
TWIN MAPLE 10" N89°E 13.86 FEET - SET D.H. NAIL IN TREE.

SET THE FOLLOWING WITNESSES:

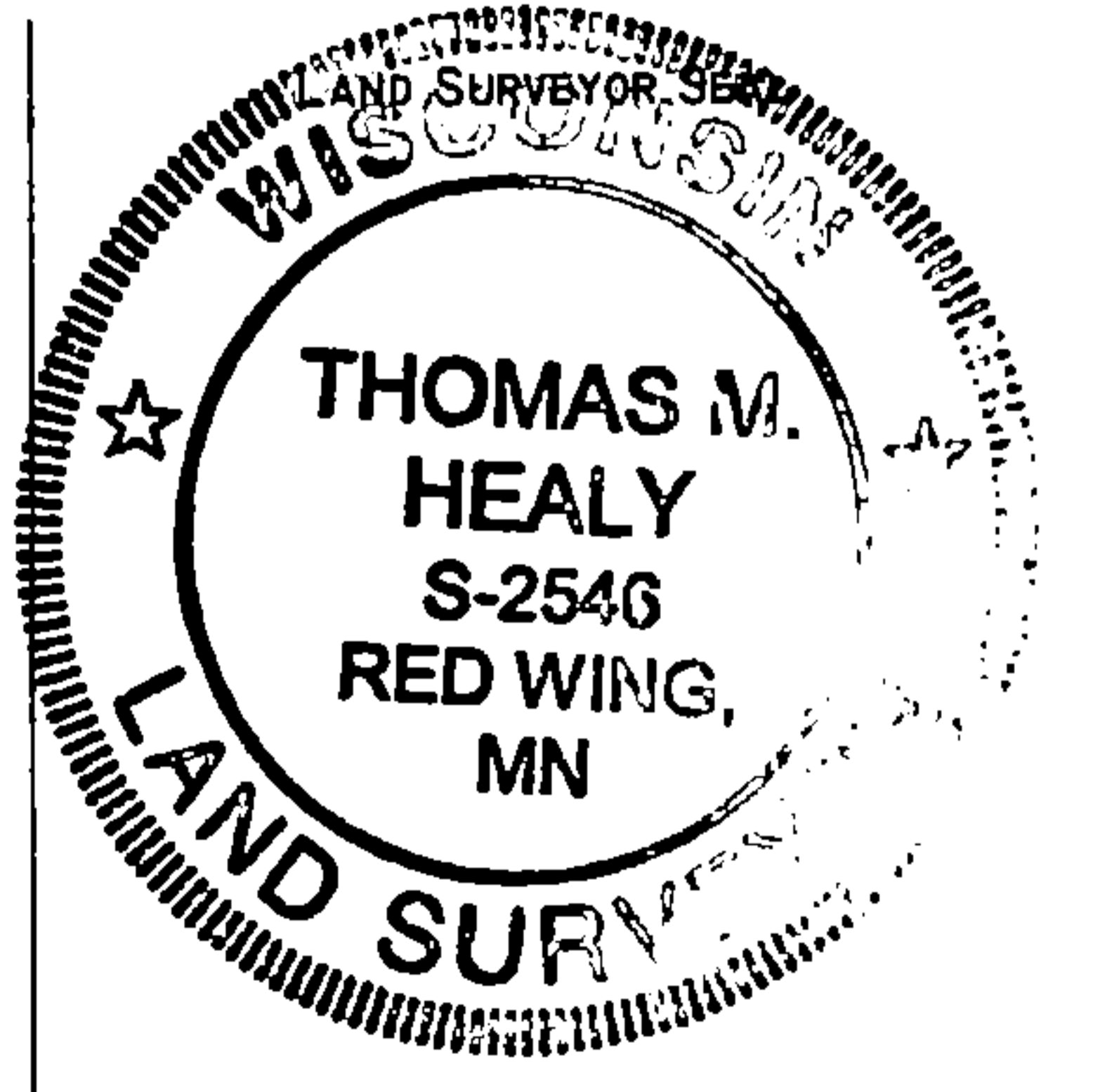
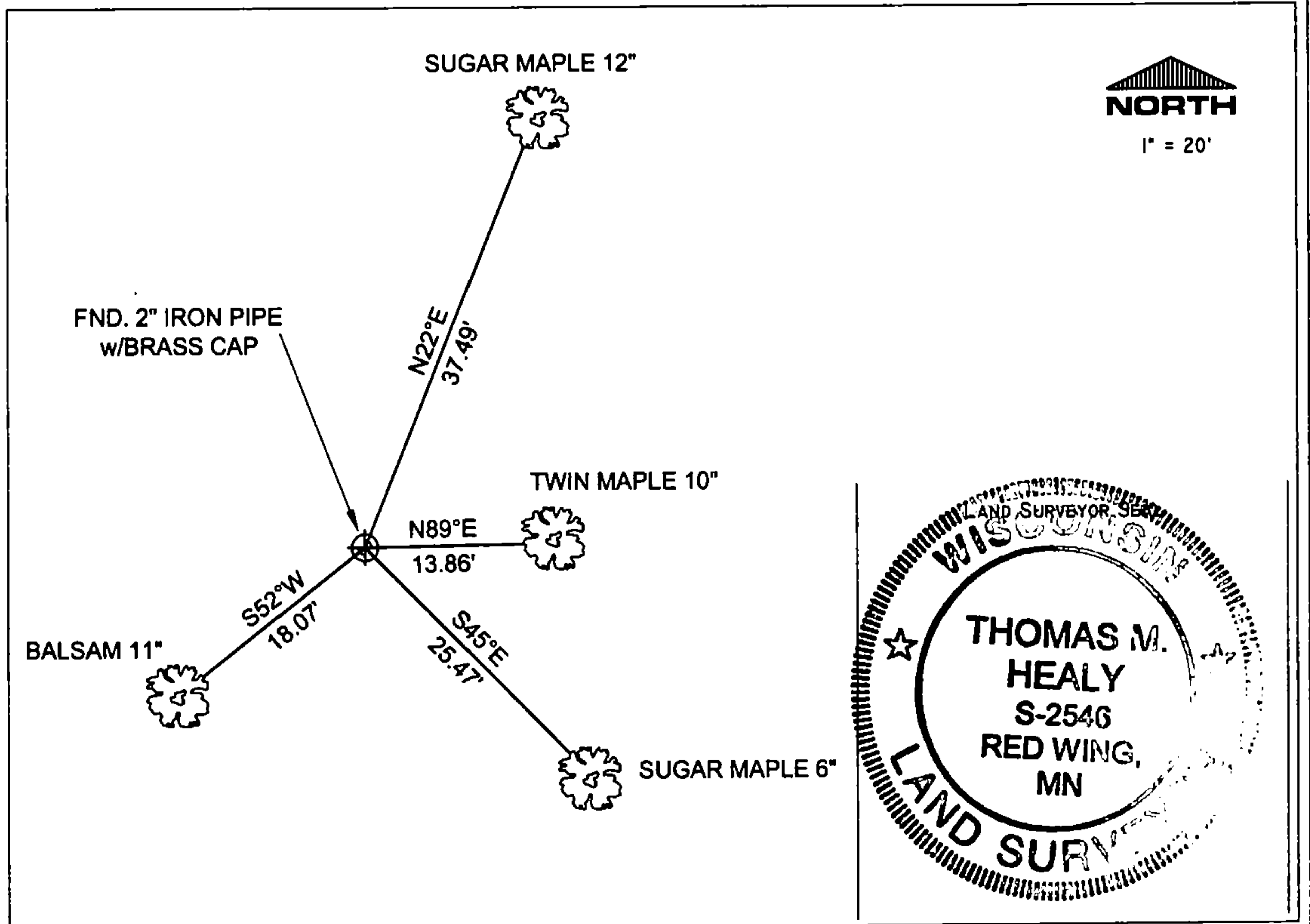
SUGAR MAPLE 6" S45°E 25.47 FEET - SET D.H. NAIL IN TREE.
BALSAM 11" S52°W 18.07 FEET - SET D.H. NAIL IN TREE.

ALL TREES HAVE CHEST & STUMP BLAZES.

THE WEST 1/4
CORNER OF SECTION 35
T. 36 N., R. 13 E.,
FOREST COUNTY, WISCONSIN



⊕ = LOCATION OF CORNER



I, THOMAS M. HEALY R.L.S. 2546

(TYPE OR PRINT NAME) CERTIFY THAT THE CORNER LOCATION SHOWN ON THIS ABOVE RECORD WAS DETERMINED BY ME OR UNDER MY DIRECTION AND CONTROL AND THAT THIS U.S. PUBLIC LAND SURVEY MONUMENT RECORD IS CORRECT AND COMPLETE TO THE BEST OF MY KNOWLEDGE AND BELIEF.

INDEX No. X-17

Thomas M. Healy
SIGNATURE DATE 11-17-05

43613342000

X-17

CERTIFIED LAND CORNER RESTORATION

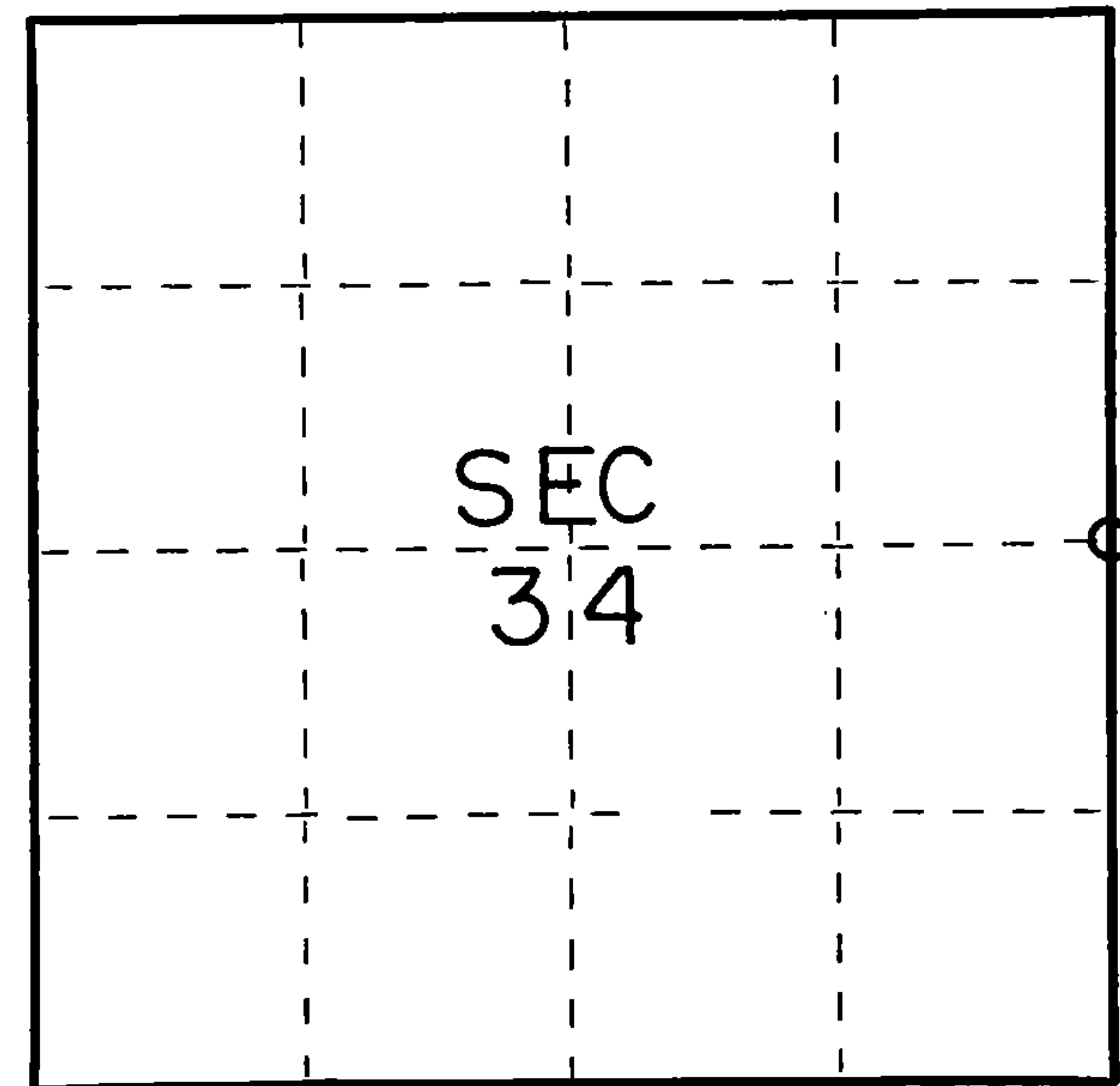
Index No. **X-17**

State of Wisconsin }
County of Forest } ss.

I Thomas R. Arnott, do hereby certify that on the 7th day of January, 19 76, I found evidence of the 1/4 corner of sections 34 & 35 Township 36, North, Range 13 E, Fourth Principal Meridian, as described hereon; and that from this evidence I established a new monument and accessories as described hereon to perpetuate the original location of this corner.

Resident witnesses:

.....
.....
.....



○ = Corner monument restored.

History of original corner establishment:

Original subdivision by James Nowlin June 2 - June 12, 1865

Hemlock 15 N40E 4Lks.
Birch 8 N38W 35 Lks.

Description of corner evidence found:

2" iron pipe 5' long with brass cap set by C.E. Walker in 1938



Description of monument and accessories I established to perpetuate the original location of the corner.

Left monument set by Walker

Ties:

Balsam 10 N13E 12.09 feet
Maple 6 S88E 13.63 feet
Balsam 10 S64W 18.02 feet

Dated at Crandon, Wis., this 9th day of January, 19 76.

Signature Thomas Arnott Title Surveyor Registration No. S-887
(County Surveyor, Registered Land Surveyor, or other duly authorized official)

Office of Register of Deeds, County of Forest, I hereby certify that the within instrument was filed in this office for record on the 9th day of January, 19 76 at 11 o'clock A. M.

Eugene Staszny Document Number **108539**
(Register of Deeds)

By..... Deputy

FORM 985 H. C. MILLER CO., MILWAUKEE

43613342000