

Document Number

171817

REGISTER'S OFFICE  
Forest County, Wis.

Received for record this 6th day  
of June A.D., 2001 at  
9:50 o'clock A.M. and recorded  
in Vol. Corner Restoration  
page A-11

*Kay Swanson, Deputy*  
Register of Deeds

U.S. PUBLIC LAND SURVEY MONUMENT RECORD

(As Required by WI Adm. Code)

History of original corner establishment and subsequent restorations and descriptions of any record, monument, occupational, testimonial or other evidence considered:

1858 - Alfred Millard, set original corner post and made the following B.T.'s:

W. Pine, 15", N 56° E, 3 lks.  
Fir, 9", S 54° W, 27 lks.

1960's - Forest County highway plans S1363(3) of County Trunk Highway "W" indicate an iron pipe for quarter corner located at the center line of Highway "W" and East of Fence Line.

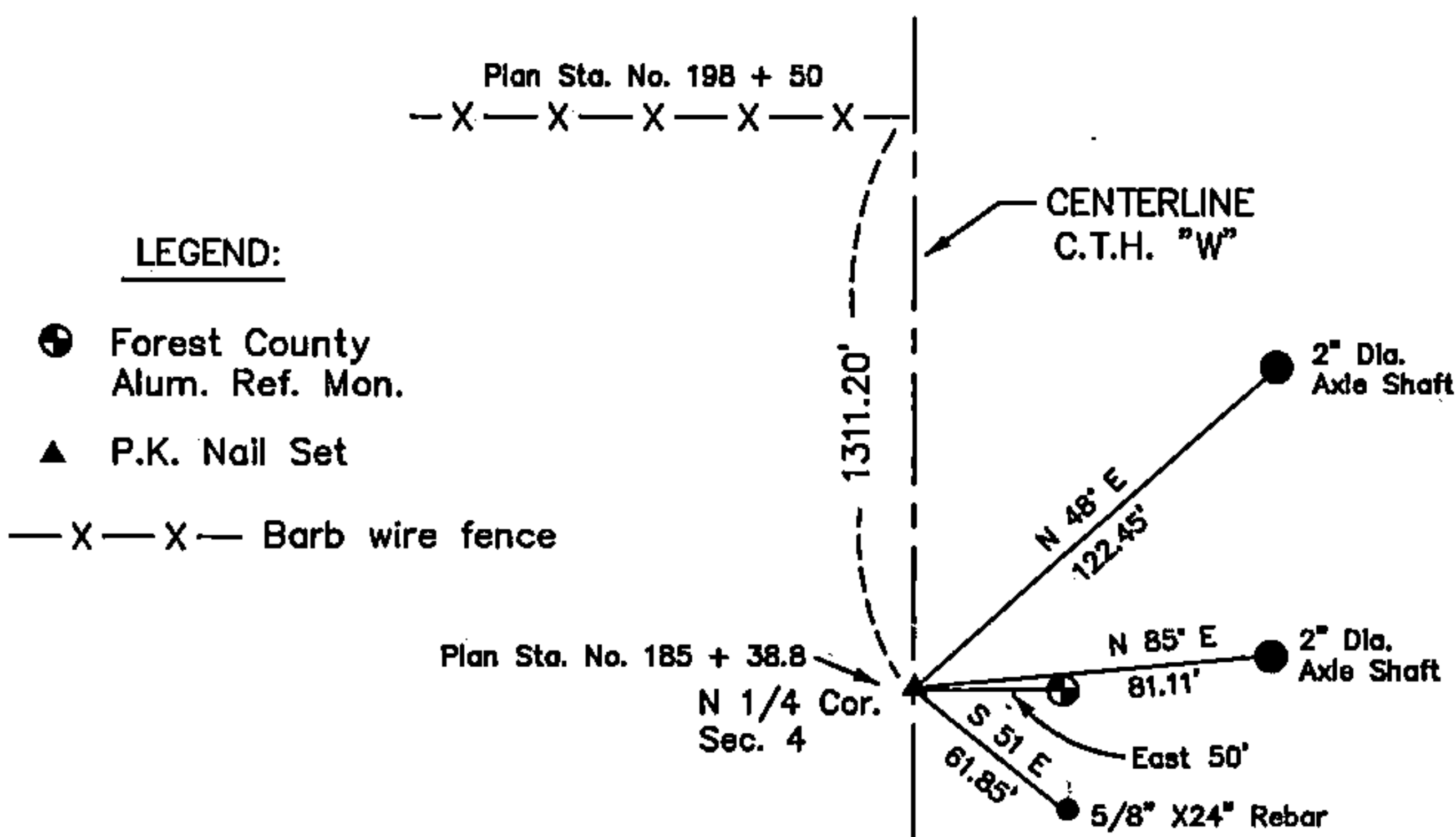
2001 - I did not find the iron pipe indicated on County Highway plans. Restored corner by using highway plan distance to old fence line North and the centerline of Highway "W".

I set a P.K. nail in blacktop for corner with Forest County Aluminum reference monument.

Corner was: (Check All That Apply)

- Restored through acceptance of an obliterated evidence location.
- Restored through acceptance of a found perpetuated location.
- Considered a lost corner and reestablished through lost corner proportionate methods (include a plan view drawing showing distances and directions to other Public Land Survey Corners used for proportioning and determining the corner location).
- Restored or reestablished in a location that differs from a previous restoration or reestablishment (include a plan view drawing and indicate what was set and/or found).

Describe the monument and accessories used to perpetuate the location of this corner (include a plan view drawing and indicate what was set and/or found).

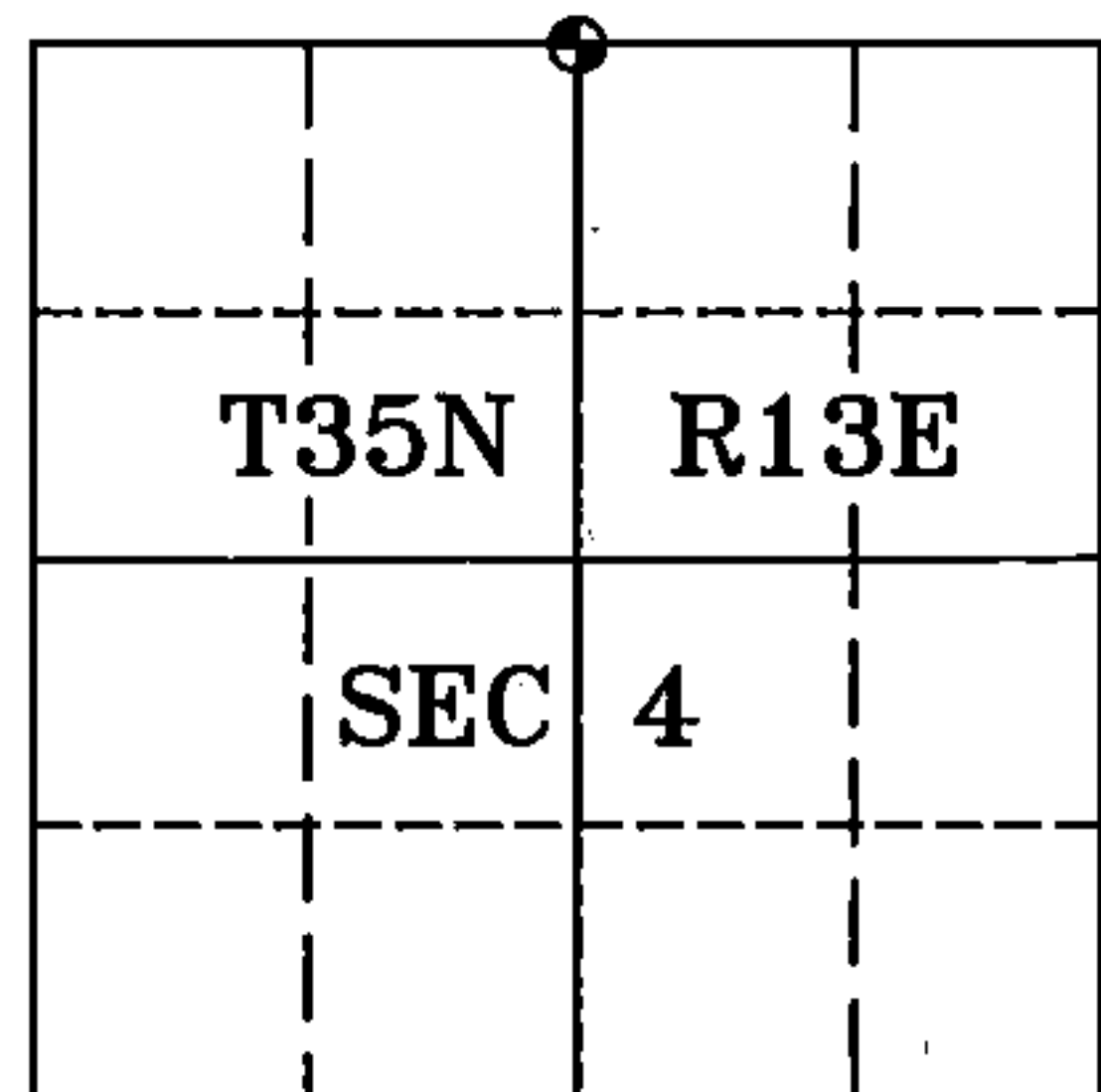
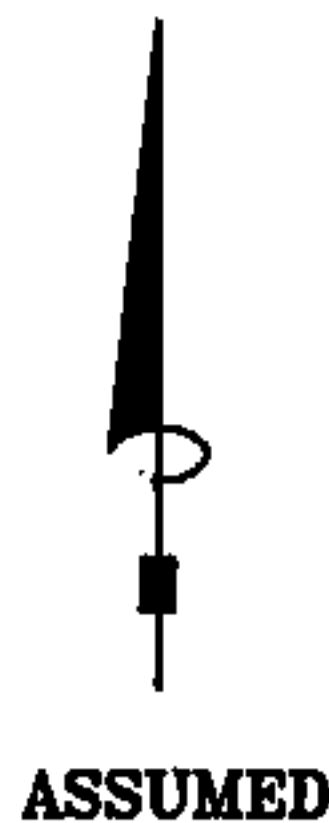


LEGEND:

● Forest County Alum. Ref. Mon.

▲ P.K. Nail Set

—X—X— Barb wire fence



I, Michael A. Trembl, RLS  
(type or print name) certify that the corner location shown on this record was determined by me or under my direction and control and that this U.S. Public Land Survey Monument Record is correct and complete to the best of my knowledge and belief.

*Michael A. Trembl* 5/15/01  
Signature Date

The North One-quarter corner of  
Section 4 T. 35 N., R. 13 E.  
Forest County, WI

Index No. A-11

43613330020