

Document Number

189322

REGISTER'S OFFICE
Forest County, Wis.

Received for record this 18th day
of November A.D., 2005 at
3:55 o'clock P. M. and recorded
in Vol. Corner Restoration
page T-21

Kay Swanson, Deputy
Register of Deeds

U.S. PUBLIC LAND SURVEY MONUMENT RECORD

(AS REQUIRED BY S. A-E 5.02, WI ADM. CODE)

HISTORY OF ORIGINAL CORNER ESTABLISHMENT AND SUBSEQUENT RESTORATIONS AND DESCRIPTION OF ANY RECORD, MONUMENT, OCCUPATIONAL, TESTIMONIAL, OR OTHER EVIDENCE CONSIDERED:

1865 - JAMES L. NOWLIN, SURVEYOR, SET POST

SET THE FOLLOWING WITNESSES:
SUGAR MAPLE 12" N22°E 20 LINKS
HEMLOCK 20" S43°W 26 LINKS

1938 - C.E. WALKER, SET 2" IRON PIPE WITH BRASS CAP.

1976 - THOMAS R. ARNOTT, SURVEYOR, S-887, FOUND MONUMENT SET BY C.E. WALKER.

SET THE FOLLOWING WITNESSES:
POPPLE 8" S32°E 12.70 FEET
POPPLE 6" S30°W 17.80 FEET
TAMARACK 8" N52°W 73.15 FEET

CORNER WAS: (CHECK ALL THAT APPLY)

- RESTORED THROUGH ACCEPTANCE OF AN OBLITERATED LOCATION
- RESTORED THROUGH ACCEPTANCE OF A FOUND PERPETUATED LOCATION
- CONSIDERED A LOST CORNER AND REESTABLISHED THROUGH LOST CORNER PROPORTIONATE METHODS (INCLUDING A PLAN VIEW DRAWING SHOWING DISTANCES AND DIRECTIONS TO OTHER PUBLIC LAND SURVEY CORNERS USED FOR PROPORTIONING AND DETERMINING THE CORNER LOCATION)
- RESTORED OR REESTABLISHED IN A LOCATION THAT DIFFERS FROM A PREVIOUS RESTORATION OF REESTABLISHMENT (INCLUDE A PLAN VIEW DRAWING AND INDICATE WHAT WAS SET AND/OR FOUND)

DESCRIBE THE MONUMENT AND ACCESSORIES USED TO PERPETUATE THE LOCATION OF THIS CORNER. (INCLUDE A PLAN VIEW DRAWING AND INDICATE WHAT WAS SET AND/OR FOUND)

FOUND 2" IRON PIPE w/BRASS CAP.

FOUND THE FOLLOWING WITNESSES:

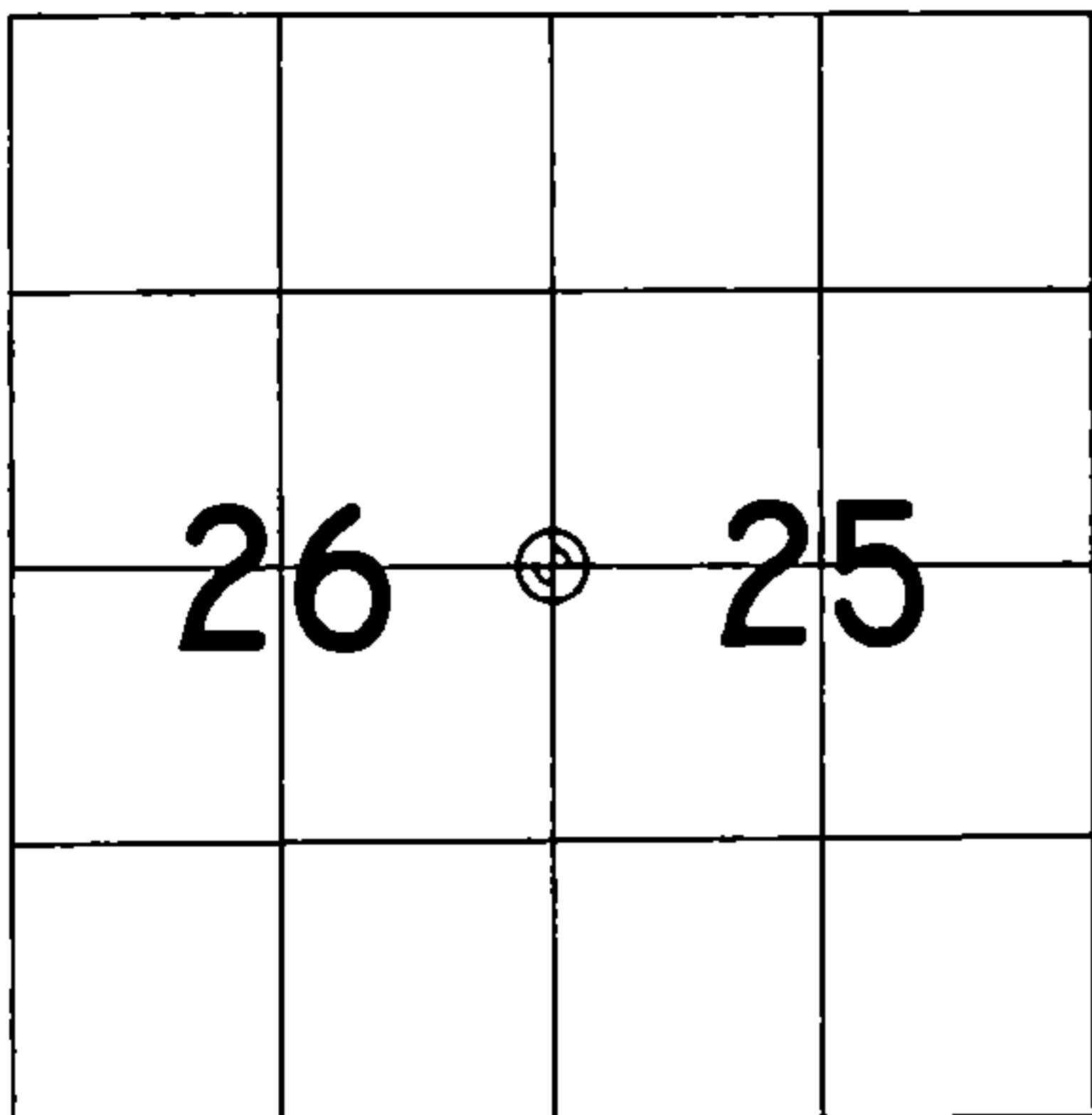
TAMARACK 9" N52°W 73.29 FEET - SET D.H. NAIL IN TREE.

SET THE FOLLOWING WITNESSES:

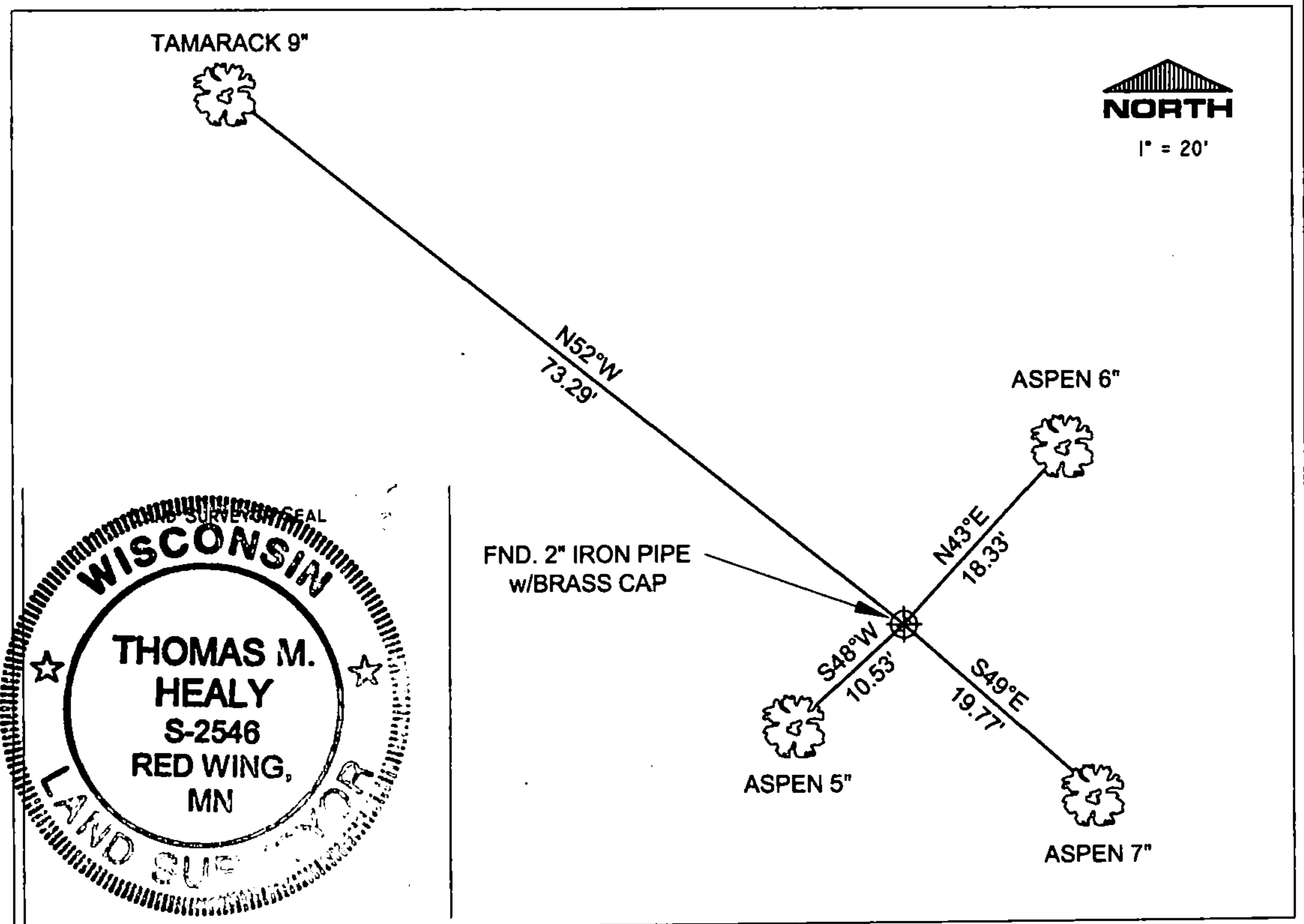
ASPEN 6" N43°E 18.33 FEET - SET D.H. NAIL IN TREE.
ASPEN 7" S49°E 19.77 FEET - SET D.H. NAIL IN TREE.
ASPEN 5" S48°W 10.53 FEET - SET D.H. NAIL IN TREE.

ALL TREES HAVE CHEST & STUMP BLAZES.

THE WEST 1/4
CORNER OF SECTION 25,
T. 36 N., R. 13 E.,
FOREST COUNTY, WISCONSIN



⊕ = LOCATION OF CORNER



I, THOMAS M. HEALY R.L.S. 2546

(TYPE OR PRINT NAME) CERTIFY THAT THE CORNER LOCATION SHOWN ON THIS ABOVE RECORD WAS DETERMINED BY ME OR UNDER MY DIRECTION AND CONTROL AND THAT THIS U.S. PUBLIC LAND SURVEY MONUMENT RECORD IS CORRECT AND COMPLETE TO THE BEST OF MY KNOWLEDGE AND BELIEF.

INDEX No. T-21

Thomas M. Healy 11-17-05
SIGNATURE DATE

43613262000

T-21

CERTIFIED LAND CORNER RESTORATION

Index No. **T21**

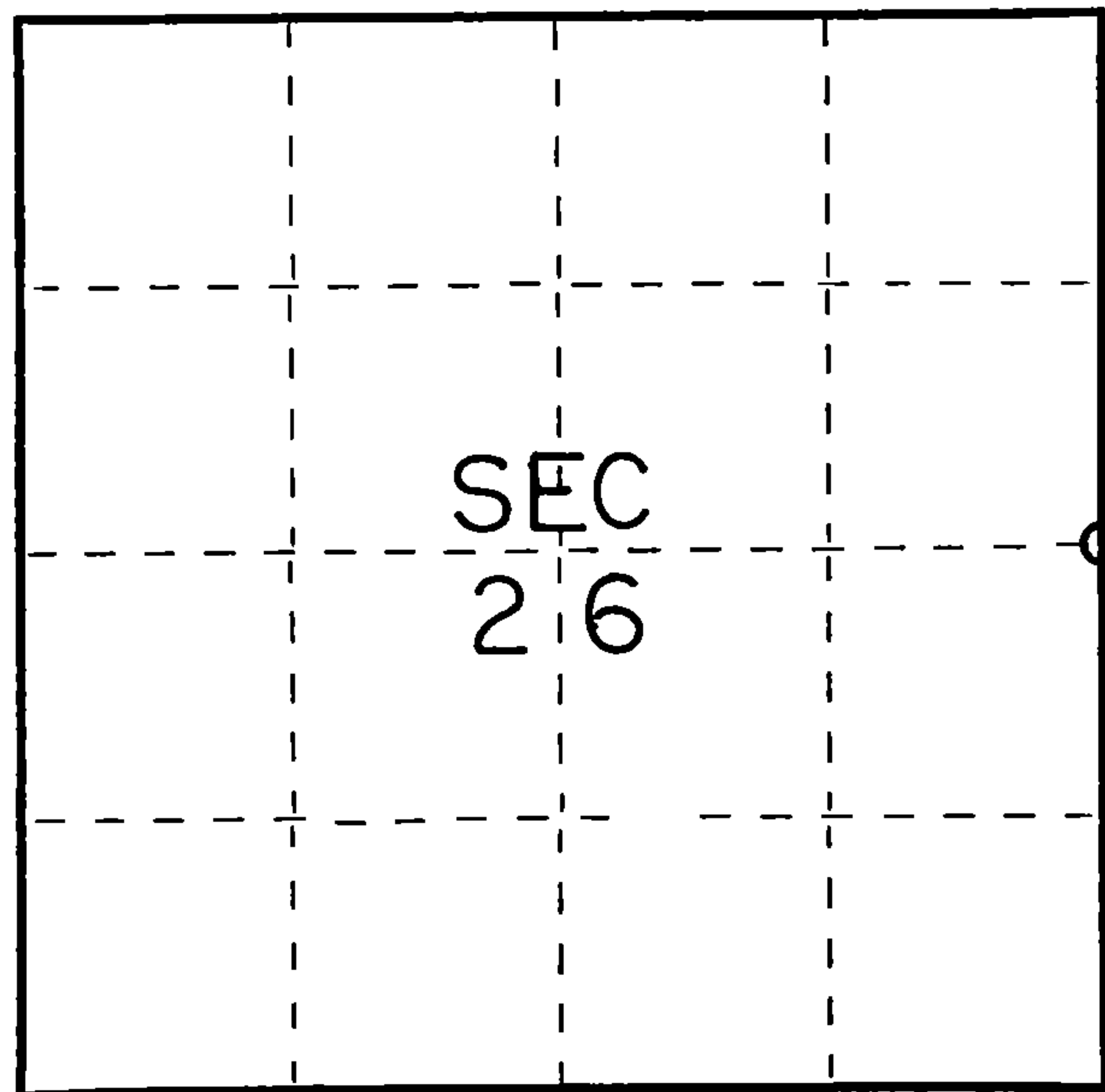
State of Wisconsin }
County of Forest } ss.

I Thomas R. Arnett, do hereby certify that on the 8th day of January, 19 76, I found evidence of the 1/4 corner of sections 25 & 26 Township 36, North, Range 13 E, Fourth Principal Meridian, as described hereon; and that from this evidence I established a new monument and accessories as described hereon to perpetuate the original location of this corner.

Resident witnesses:

.....
.....
.....

FORM 985 H. C. MILLER CO., MILWAUKEE



○ = Corner monument restored.

History of original corner establishment:

Original Subdivision by James Nowlin June 2 - June 12, 1865

Sugar 12 N22E 20 Lks.
Hemlock 20 S43W 26 Lks.

Description of corner evidence found:

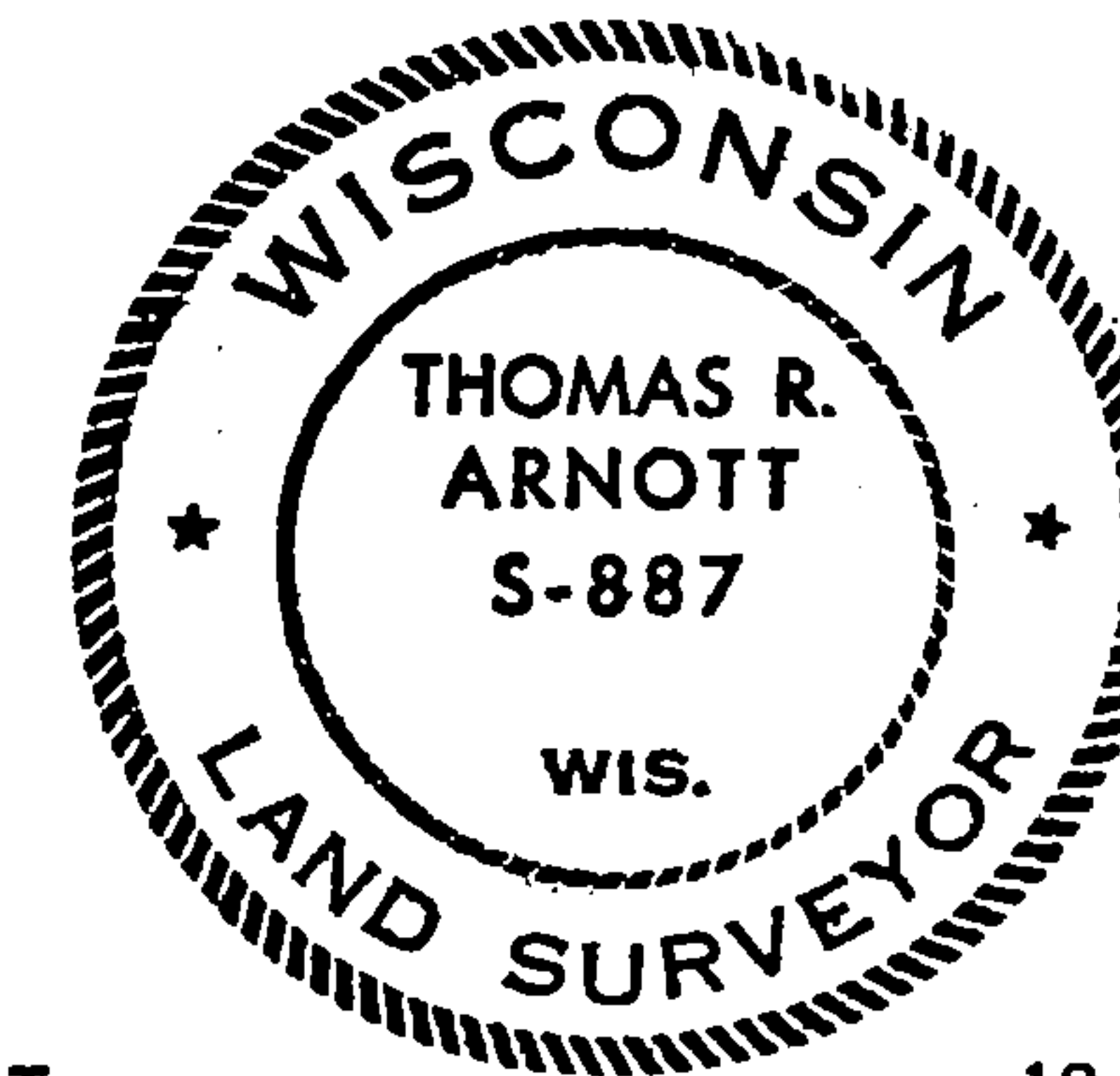
2" iron pipe with brass cap set by C.E. Walker in 1938

Description of monument and accessories I established to perpetuate the original location of this corner.

Left monument set by Walker

Ties:

Popple 8 S32E 12.70 feet
Popple 6 S30W 17.80 feet
Tamarac 8 N52W 73.15 feet



Dated at Crandon, Wis., this 15th day of January, 19 76.

Signature Thomas Arnett Title Surveyor Registration No. S-887
(County Surveyor, Registered Land Surveyor, or other duly authorized official)

Office of Register of Deeds, County of Forest, I hereby certify that the within instrument was filed in this office for record on the 15th day of January, 19 76 at 3 o'clock P. M.

Eugene Stagny Document Number 108576
(Register of Deeds)

By Deputy

436 13262000