

CERTIFIED LAND CORNER

History of original corner establishment:

- 1865 - JAMES NOWLIN, SURVEYOR, SET POST
SET THE FOLLOWING WITNESSES:
SUGAR 10" N23°E 13 LINKS
HEMLOCK 12" S67°W 16 LINKS
- 1938 - C.E. WALKER, SET 2" IRON PIPE 5' LONG WITH BRASS CAP.
- 1975 - THOMAS R. ARNOTT, SURVEYOR, S-887, FOUND MONUMENT SET BY C.E. WALKER.
SET THE FOLLOWING WITNESSES:
MAPLE 10" N89°W 34.80 FEET
MAPLE 6" N18°E 29.08 FEET
ASH 8" S60°W 25.47 FEET
- 2005 - THOMAS M. HEALY R.L.S. 2546, FOUND 2" IRON PIPE w/BRASS CAP.

SET THE FOLLOWING WITNESSES:
WHITE ASH 9" N86°E 8.12 FEET-SET D.H. NAIL IN TREE.
SUGAR MAPLE 6" S01 °E 11.81 FEET - SET D.H. NAIL IN TREE.
WHITE ASH 10" N36°W 13.08 FEET-SET D.H. NAIL IN TREE.
SUGAR MAPLE 5" S70°W 5.32 FEET - SET D.H. NAIL IN TREE.
ALL TREES HAVE CHEST & STUMP BLAZES.

Description of corner evidence found:

Prior to road construction on Potawatomi Trail Subdivision, the section corner and surviving witnesses were located. After road construction, Berntsen SDD 16A07 Aluminum Monument was set inside a Cast Iron Monument Cover along with 4 new Berntsen SSDR130 witness monuments.

Road was not named at the time the corner was set.

Witnesses to corner location:

Abimael Martinez
Justin Van Lanen
Aaron D. Ballast

SURVEY DATUM INFORMATION

HORIZONTAL DATUM:

WISCRS FOREST COUNTY NAD
83 (2011), IN US SURVEY FEET

CORNER:

SE COR. SEC. 26, T36N-R13E
43613260000

NORTHING (Y):

568737.487

EASTING (X):

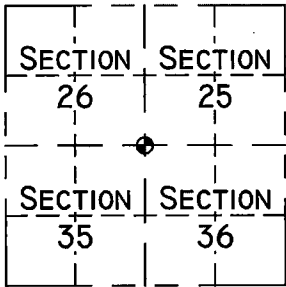
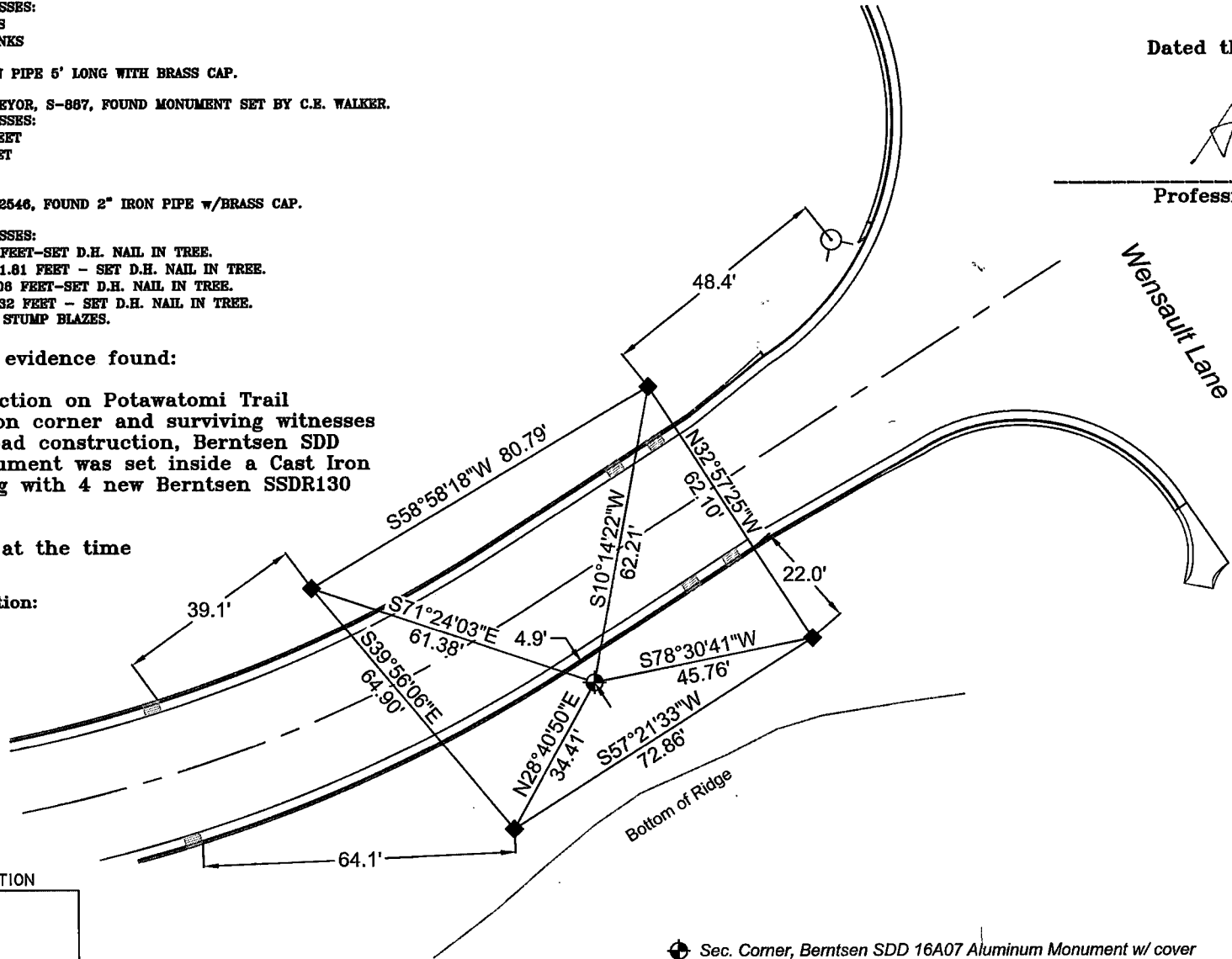
857118.422

I, Aaron D. Ballast, do hereby certify that on the 10th day of October of 2023, I found evidence of the Southeast Corner of Section 26, T36N-R13E, Fourth Principal Meridian, and I re-established said corner to the Wisconsin Statutes as shown and described hereon.

Dated this 12th day of October, 2023

Aaron D. Ballast

Professional Land Surveyor 2880-008



T36N-R13E
WISCONSIN

Town: Crandon
County of: Forest
Drafted by: Abimael Martinez

43613260000

V-21

Document Number

189723

REGISTER'S OFFICE
Forest County, Wis.
Received for record this 18th day
of November A.D., 2005 at
3:55 o'clock P.M. and recorded
in Vol. Corner Restoration
page V-21
Kay Swanson, Deputy
Register of Deeds

U.S. PUBLIC LAND SURVEY MONUMENT RECORD

(AS REQUIRED BY S. A-E 5.02, WI ADM. CODE)

HISTORY OF ORIGINAL CORNER ESTABLISHMENT AND SUBSEQUENT RESTORATIONS AND DESCRIPTION OF ANY RECORD, MONUMENT, OCCUPATIONAL, TESTIMONIAL, OR OTHER EVIDENCE CONSIDERED:

1865 - JAMES NOWLIN, SURVEYOR, SET POST

SET THE FOLLOWING WITNESSES:
SUGAR 10" N23°E 13 LINKS
HEMLOCK 12" S67°W 16 LINKS

1938 - C.E. WALKER, SET 2" IRON PIPE 5' LONG WITH BRASS CAP.

1975 - THOMAS R. ARNOTT, SURVEYOR, S-887, FOUND MONUMENT SET BY C.E. WALKER.

SET THE FOLLOWING WITNESSES:
MAPLE 10" N89°W 34.60 FEET
MAPLE 6" N16°E 29.08 FEET
ASH 8" S60°W 25.47 FEET

CORNER WAS: (CHECK ALL THAT APPLY)

- ☐ RESTORED THROUGH ACCEPTANCE OF AN OBLITERATED LOCATION
☒ RESTORED THROUGH ACCEPTANCE OF A FOUND PERPETUATED LOCATION
☐ CONSIDERED A LOST CORNER AND REESTABLISHED THROUGH LOST CORNER PROPORTIONATE METHODS (INCLUDING A PLAN VIEW DRAWING SHOWING DISTANCES AND DIRECTIONS TO OTHER PUBLIC LAND SURVEY CORNERS USED FOR PROPORTIONING AND DETERMINING THE CORNER LOCATION)
☐ RESTORED OF REESTABLISHED IN A LOCATION THAT DIFFERS FROM A PREVIOUS RESTORATION OF REESTABLISHMENT (INCLUDE A PLAN VIEW DRAWING AND INDICATE WHAT WAS SET AND/OR FOUND)

DESCRIBE THE MONUMENT AND ACCESSORIES USED TO PERPETUATE THE LOCATION OF THIS CORNER. (INCLUDE A PLAN VIEW DRAWING AND INDICATE WHAT WAS SET AND/OR FOUND)

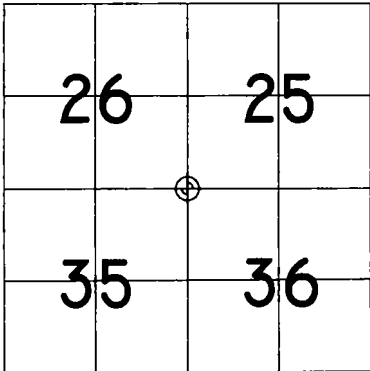
FOUND 2" IRON PIPE w/BRASS CAP.

SET THE FOLLOWING WITNESSES:

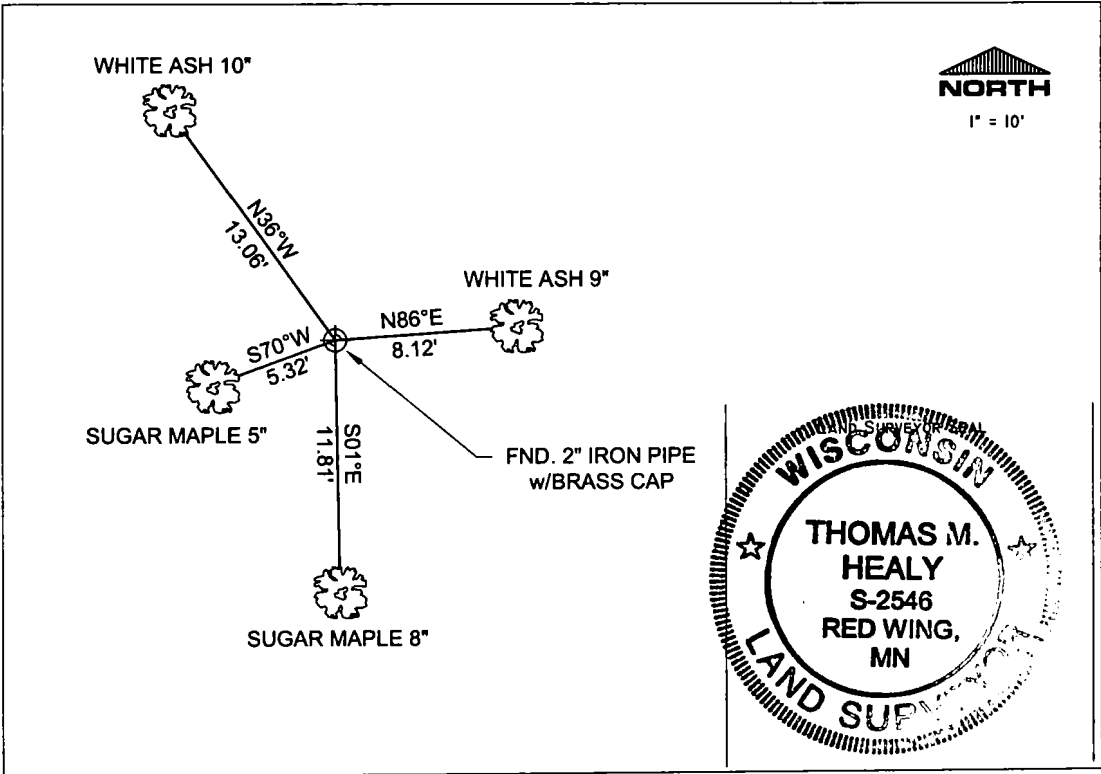
WHITE ASH 9" N86°E 8.12 FEET - SET D.H. NAIL IN TREE.
SUGAR MAPLE 8" S01°E 11.81 FEET - SET D.H. NAIL IN TREE.
WHITE ASH 10" N36°W 13.06 FEET - SET D.H. NAIL IN TREE.
SUGAR MAPLE 5" S70°W 5.32 FEET - SET D.H. NAIL IN TREE.

ALL TREES HAVE CHEST & STUMP BLAZES.

THE NORTHEAST
CORNER OF SECTION 35
T. 36 N., R. 13 E.,
FOREST COUNTY, WISCONSIN



⊕ = LOCATION OF CORNER



I, THOMAS M. HEALY R.L.S. 2546

(TYPE OR PRINT NAME) CERTIFY THAT THE CORNER LOCATION SHOWN ON THIS ABOVE RECORD WAS DETERMINED BY ME OR UNDER MY DIRECTION AND CONTROL AND THAT THIS U.S. PUBLIC LAND SURVEY MONUMENT RECORD IS CORRECT AND COMPLETE TO THE BEST OF MY KNOWLEDGE AND BELIEF.

INDEX No. V-21

Thomas M. Healy 11-17-05
SIGNATURE DATE

43613260000

V-21

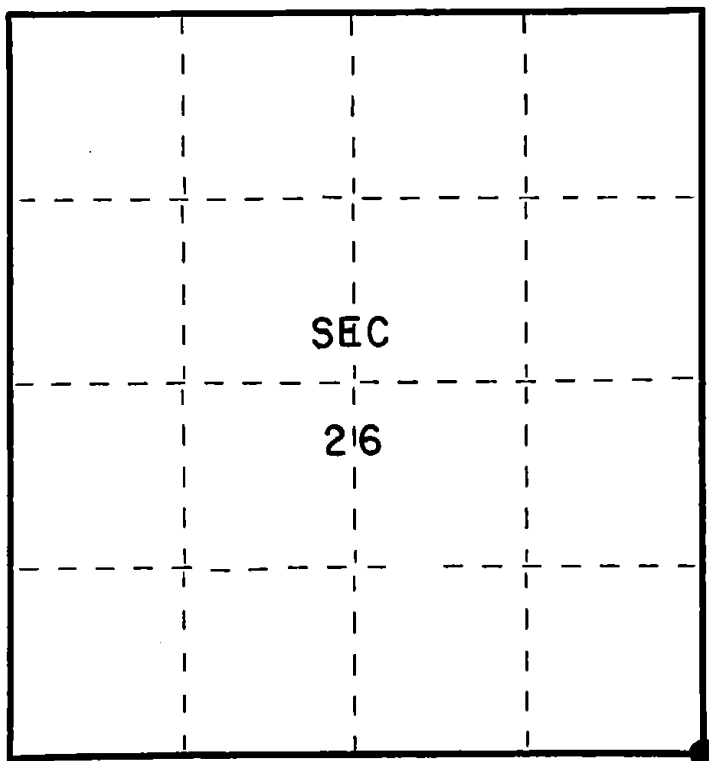
CERTIFIED LAND CORNER RESTORATION

Index No. **V21**

State of Wisconsin }
County of Forest } ss.

I Thomas R. Arnett, do hereby
certify that on the 5th day
of December, 19 75, I found
evidence of the Section
corner of sections 25, 26, 35, & 36
Township 36, North, Range
13 E, Fourth Principal Meridian,
as described hereon; and that from this evidence
I established a new monument and accessories
as described hereon to perpetuate the original
location of this corner.

Resident witnesses:



○ = Corner monument restored.

History of original corner establishment:

Original subdivision by James L. Nowlin June 2 - June 12, 1865

Sugar	10	N23E	13 Lks.
Hemlock	12	S67W	16 Lks.

Description of corner evidence found:

2" iron pipe 5' long with brass cap set by C.E.Walker in 1938

Description of monument and accessories I established to perpetuate the original location of this corner.

Left monument set by Walker

Ties:

Maple	10	N89W	34.60 feet
Maple	6	N16E	29.08 feet
Ash	8	S60W	25.47 feet



Dated at Crandon, Wis., this 15th day of December, 19 75

Signature Thomas Arnett Title Land Surveyor Registration No. S-887
(County Surveyor, Registered Land Surveyor, or other duly authorized official)

Office of Register of Deeds, County of Forest, I hereby certify that the within
instrument was filed in this office for record on the 15th day of December, 19 75
at 11 o'clock A. M.

Eugene Stutzman Document Number 108377
(Register of Deeds)

By _____ Deputy

FORM 985 H. C. MILLER CO., MILWAUKEE

430013200000