

127705

U. S. PUBLIC LAND SURVEY MONUMENT RECORD

INSTRUCTIONS:

This record shall show the location of the corner and shall include all of the following nine elements (a through i).

- (a) Identify the corner by reference to the U.S. public land survey system.

○ = Corner monument restored.

Section corner to Sections 25, 30, 31, and 36, T.36N., R.13-14E., Forest County, Wisconsin.

REGISTER'S OFFICE

Forest County, Wis.

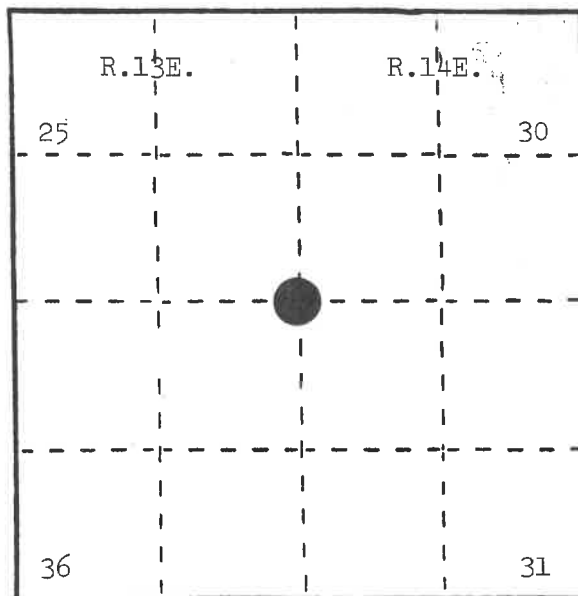
Received for record this... 1st... day

of... April... A.D., 19... at

2:05... o'clock... P... M. and

recorded in Vol. CORNER RESTORATIONS

on page... V-1... Paul Aschenbrenner
REGISTER



- (b) Describe any record evidence, monument evidence, occupational evidence, testimonial evidence or any other material evidence you considered, and whether the monument was found or placed.

In 1858, Alfred Millard set post at 80.00 chains with the following BTs: Ironwood, 8", N.64°E., 22 links; Sugar, 18", S.68°E., 14 links; Sugar, 12", S.33°W., 53 links; Sugar, 12", N.8°W., 25 links.

In 1938, C. E. Walker set a 2" x 60" iron pipe with brass cap.

In 1975, Thomas Arnott witnessed Walker's monument and filed a County Corner Certificate, Document Number 108379, and made BTs.

In 1982, Milo Stefan found County monument by C. E. Walker and made new BTs.

- (c) In the plan view drawing below, provide reference ties to at least 4 witness monuments, or, if the location is within a municipality, to at least 2 witness monuments. (Witness monuments shall be made of concrete, natural stone, iron or other equally durable material.) Describe witness monuments.

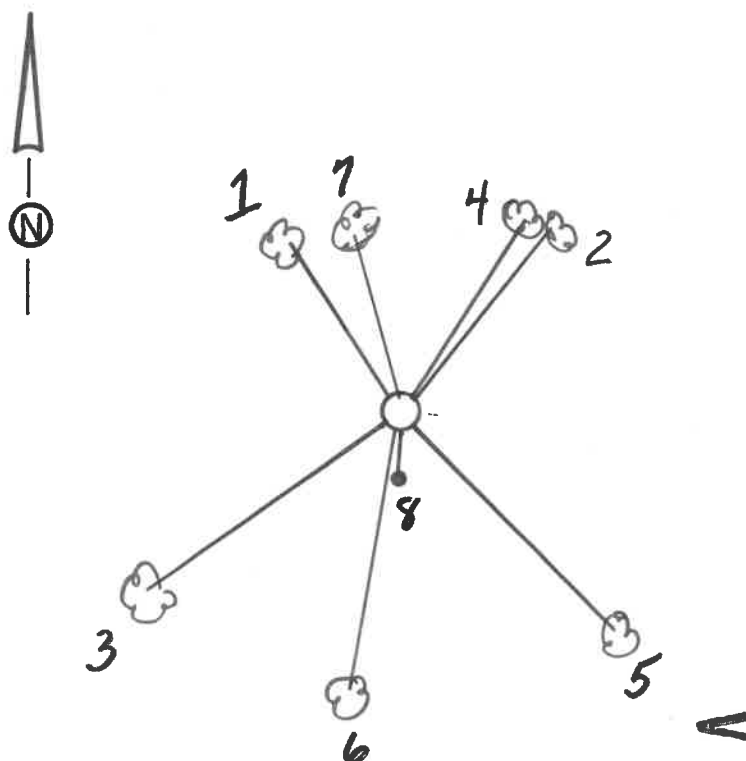
- (d) Show a plan view drawing depicting the relevant monuments and reference ties which is sufficient in detail to enable accurate relocation of the corner monument if the corner monument is disturbed. Indicate north.

1975--Arnott's BTs:

1. Maple, 10", N.29°W., 13.27 feet
2. Ash, 8", N.34°E., 22.48 feet
3. Maple, 12", S.55°W., 41.67 feet

1982--Stefan's BTs:

4. Sugar Maple, 5", N.33°E., 33.60 feet
5. Sugar Maple, 6", S.43°E., 48.22 feet
6. Sugar Maple, 6", S.8°W., 18.33 feet
7. Sugar Maple, 8", N.16°W., 45.83 feet
8. Steel Sign Post, South, 2.20 feet



- (e) Describe any material discrepancy between the location of the corner as restored or reestablished and the location of that corner as previously restored or reestablished by distance and direction. Show the discrepancy on the plan view drawing under (d), above. Show the distances between the corner as previously restored or reestablished and (1) the corner as restored or reestablished, and (2) to at least 2 of the witness monuments shown on the drawing in (d), above.

None.

- (f) Was the corner restored through acceptance of (1) an obliterated evidence location, or, (2) a found perpetuated location?

(2) a found perpetuated location.

- (g&h) Was the corner reestablished through lost corner proportionate methods? If so, show the method, including the directions and distances to other public land survey corners used as evidence or used for proportioning in determining the corner location?

No.

- (i) I, Milo E. Stefan
(Type or print name) certify that the corner location shown on this record was determined by me or under my direction and control and that this U.S. Public Land Survey Monument Record is correct and complete to the best of my knowledge and belief.

Milo E. Stefan
Signature

3/20/85
Date



State of Wisconsin }
County of Forest } ss.

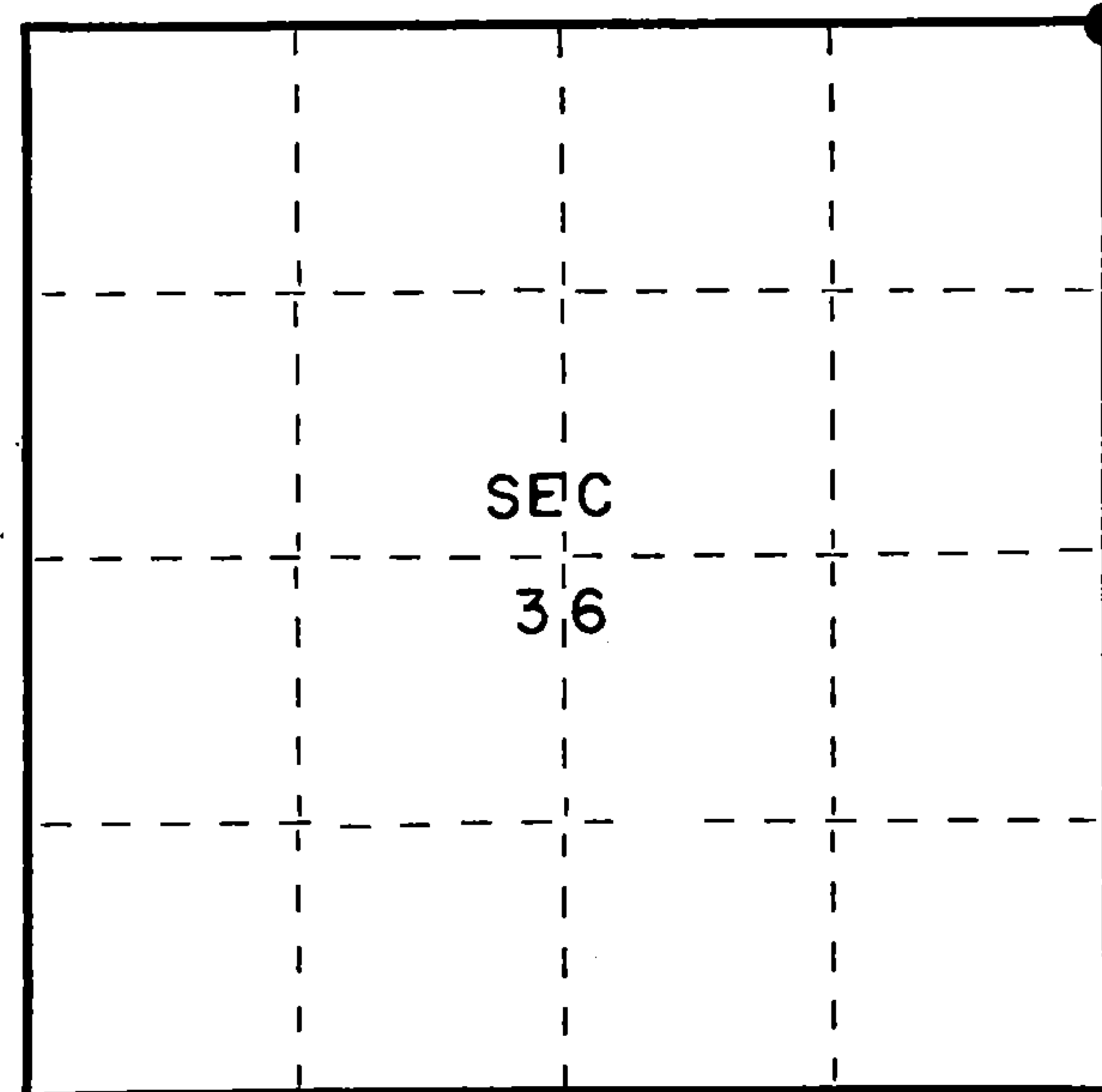
I Thomas R. Arnett, do hereby
certify that on the 5th day
of December, 1975, I found
evidence of the Section
corner of sections 25, 36, 30 & 31
Township 36, North, Range
13 - 14 E, Fourth Principal Meridian,
as described hereon; and that from this evidence
I established a new monument and accessories
as described hereon to perpetuate the original
location of this corner.

Resident witnesses:

.....

.....

.....



○ = Corner monument restored.

CERTIFIED LAND CORNER RESTORATION

Index No. V25

History of original corner establishment:

Ironwood	8	N64E	22 Lks.
Sugar	12	N8W	25 Lks.
Sugar	12	S33W	53 Lks.
Sugar	18	S68E	14 Lks.

Description of corner evidence found:

2" iron pipe 5' long with brass cap set by C.E.Walker in 1938

Description of monument and accessories I established to perpetuate the original location of this corner.

Left moument set by Walker:

Ties:			
Maple	10	N29W	13.27 feet
Ash	8	N34E	22.48 feet
Maple	12	S55W	41.67 feet



Dated at Crandon, Wis., this 15th day of December, 1975.

Signature Thomas Arnett Title Land Surveyor Registration No. S-887
(County Surveyor, Registered Land Surveyor, or other duly authorized official)

Office of Register of Deeds, County of Forest, I hereby certify that the within
instrument was filed in this office for record on the 15th day of December, 1975.
at 11 o'clock A M.

Eugene Staszny Document Number 108379
(Register of Deeds)

By _____ Deputy

4361325 0000
SEE ALSO V-1 T36NR 14E

Document Number

189309

REGISTER'S OFFICE
Forest County, Wis.
Received for record this 18th day
of November A.D., 2005 at
3:55 o'clock P.M. and recorded
in Vol. Corner Restoration
page V-25
Kay Swanson, Deputy
Register of Deeds

U.S. PUBLIC LAND SURVEY MONUMENT RECORD

(AS REQUIRED BY S. A-E 5.02, WI ADM. CODE)

HISTORY OF ORIGINAL CORNER ESTABLISHMENT AND SUBSEQUENT RESTORATIONS AND DESCRIPTION OF ANY RECORD, MONUMENT, OCCUPATIONAL, TESTIMONIAL, OR OTHER EVIDENCE CONSIDERED:

1858 - ALFRED MILLARD, SURVEYOR, SET POST

SET THE FOLLOWING WITNESSES:
IRONWOOD 8" N64°E 22 LINKS
SUGAR 12" N08°W 25 LINKS
SUGAR 12" S33°W 53 LINKS
SUGAR 18" S68°E 14 LINKS

1938 - C.E. WALKER, SET 2" IRON PIPE 5' LONG WITH BRASS CAP.

1975 - THOMAS R. ARNOTT, SURVEYOR, S-887, FOUND MONUMENT SET BY C.E. WALKER.

SET THE FOLLOWING WITNESSES:
MAPLE 10" N29°W 13.27 FEET
ASH 8" N34°E 22.48 FEET
MAPLE 12" S55°W 41.67 FEET

CORNER WAS: (CHECK ALL THAT APPLY)

- ☐ RESTORED THROUGH ACCEPTANCE OF AN OBLITERATED LOCATION
☒ RESTORED THROUGH ACCEPTANCE OF A FOUND PERPETUATED LOCATION
☐ CONSIDERED A LOST CORNER AND REESTABLISHED THROUGH LOST CORNER PROPORTIONATE METHODS (INCLUDING A PLAN VIEW DRAWING SHOWING DISTANCES AND DIRECTIONS TO OTHER PUBLIC LAND SURVEY CORNERS USED FOR PROPORTIONING AND DETERMINING THE CORNER LOCATION)
☐ RESTORED OF REESTABLISHED IN A LOCATION THAT DIFFERS FROM A PREVIOUS RESTORATION OF REESTABLISHMENT (INCLUDE A PLAN VIEW DRAWING AND INDICATE WHAT WAS SET AND/OR FOUND)

DESCRIBE THE MONUMENT AND ACCESSORIES USED TO PERPETUATE THE LOCATION OF THIS CORNER. (INCLUDE A PLAN VIEW DRAWING AND INDICATE WHAT WAS SET AND/OR FOUND)

FOUND 2" IRON PIPE w/BRASS CAP.

FOUND THE FOLLOWING WITNESSES:

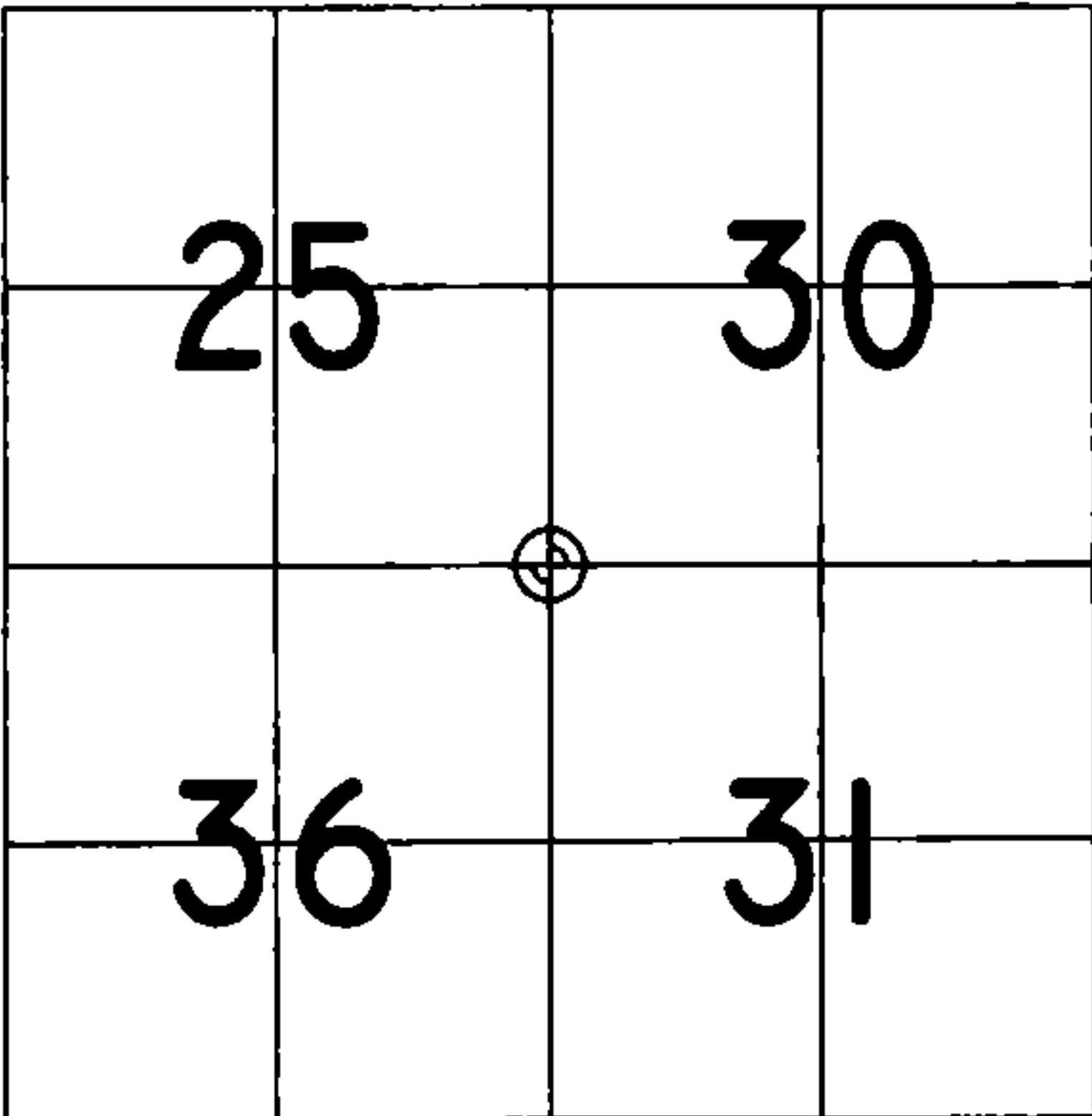
WHITE ASH 13" N40°E 22.62 FEET - SET D.H. NAIL IN TREE.
SUGAR MAPLE 12" (DEAD) N26°W 13.13 FEET
SUGAR MAPLE 12" S55°W 41.26 FEET - SET D.H. NAIL IN TREE.

SET THE FOLLOWING WITNESSES:

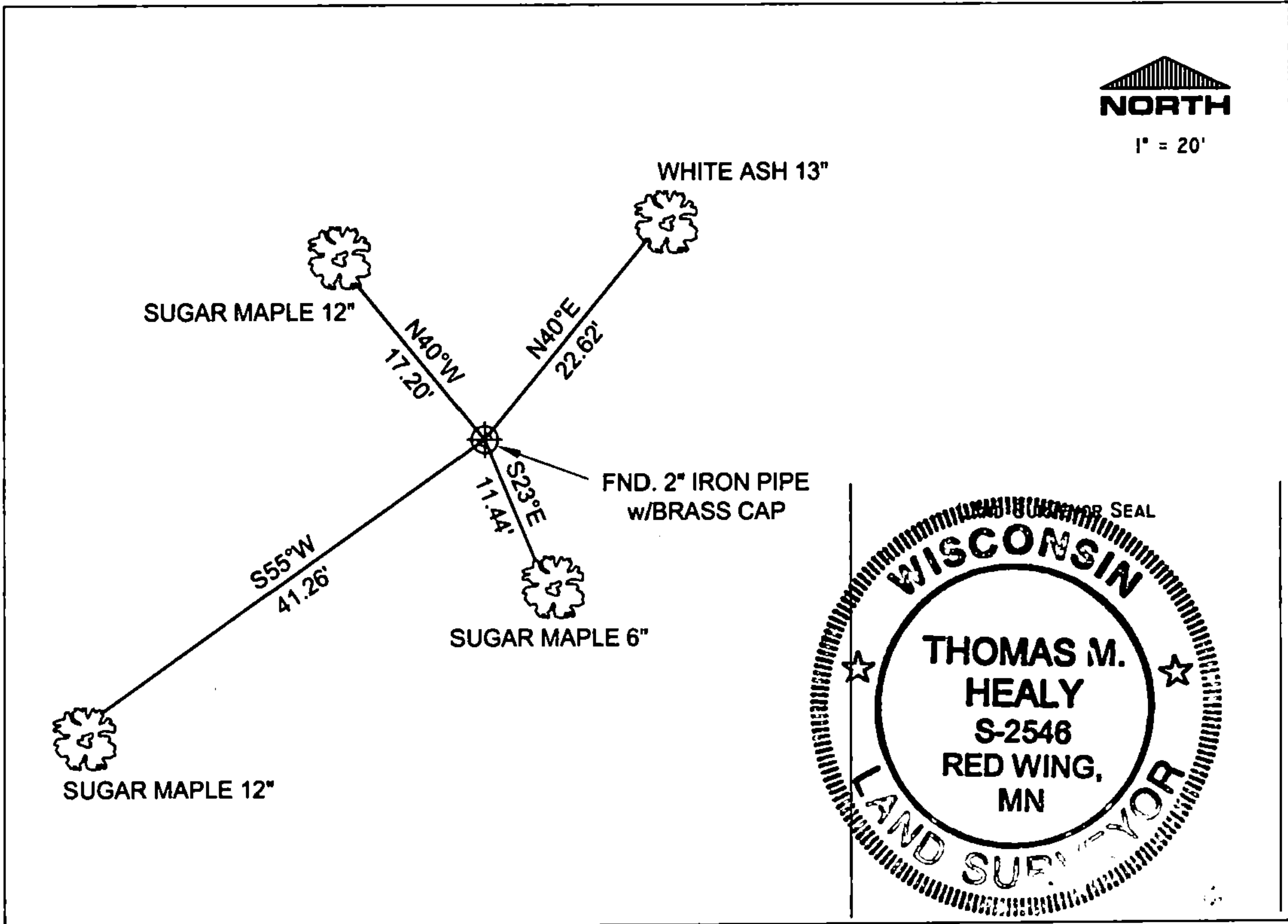
SUGAR MAPLE 6" S23°E 11.44 FEET - SET D.H. NAIL IN TREE.
SUGAR MAPLE 12" N40°W 17.20 FEET - SET D.H. NAIL N TREE.
STEEL SIGN POST S02°W 2.26 FEET

ALL TREES HAVE CHEST & STUMP BLAZES.

THE SOUTHEAST
CORNER OF SECTION 25,
T. 36 N., R. 13 E.,
FOREST COUNTY, WISCONSIN



⊕ = LOCATION OF CORNER



I, THOMAS M. HEALY R.L.S. 2546

(TYPE OR PRINT NAME) CERTIFY THAT THE CORNER LOCATION SHOWN ON THIS ABOVE RECORD WAS DETERMINED BY ME OR UNDER MY DIRECTION AND CONTROL AND THAT THIS U.S. PUBLIC LAND SURVEY MONUMENT RECORD IS CORRECT AND COMPLETE TO THE BEST OF MY KNOWLEDGE AND BELIEF.

INDEX No. V-25

TH M. Healy 11-17-05
SIGNATURE DATE

4361325 0000

V-25